

# Technical Memorandum

**ROCKHAMPTON REGIONAL COUNCIL**  
**AMENDED PLANS APPROVED**  
 4 July 2024  
 DATE  
 These plans are approved subject to the current  
 conditions of approval associated with  
**Development Permit No.: D/278-2013**  
**Dated: 5 February 2014**

To:	From
Aidan Murray Planning Officer Rockhampton Regional Council	Chris Hewitt Principal Civil Engineer McMurtrie Consulting Engineers

RE: Response to Further Advice D/278/2013 - Lot 100 Nine Mile Road, Fairy Bower

Reference is made to the project at the above address, and Council’s Further Advice notice received on 1 November 2023. McMurtrie Consulting Engineers (MCE) have been engaged to prepare a response to Item 2 raised in the advice in relation to Traffic and Pavement Impact Assessment.

Responses to the Items raised are presented below, with additional information provided as Attachments as referenced.

## Traffic and Pavement Impact Assessment

### 2.1 Issue:

Council does not agree with the proposed road maintenance levy of \$0.22 per tonne for the additional 250,000 tonnes per annum. In comparison to the adjoining development as mentioned in the report, the \$0.22 per tonne was based on a haulage of 100,000 tonnes per annum.

### Action:

A Pavement impact assessment (PIA) is required for the additional 250,000 tonnes and an appropriate rate must be calculated for the expansion.

## RESPONSE:

A data request for the section of Nine Mile Road between the Nine Mile Road / Fogarty Road intersection and Rockhampton Ridgeland Road / Nine Mile Road intersection was submitted in February of 2023 (see Attachment A), where it was indicated that Pavement Roughness Data was not available.

In the absence of pavement roughness data, it was considered appropriate that a comparable levy from a similar use and activity would be reasonable for the assessment. The adopted rate of \$0.22 per tonne was considered to best suit the subject application given:

- The subject PIA is over an adjoining property of that previously approved and therefore does not compare as a site with a vastly different local conditions.
- The section on Nine Mile Road applicable to the application is the same as that of the approved application referenced.
- The rate prescribed in the approved application is adjustable for inflation and is dependent on the haulage volume rather than distance allowing for the adjustment in activity.

Notwithstanding the above, the pavement impact on Nine Mile Road has been recalculated based on new information (pavement roughness data) provided as part of the Further Advice notice resulting in a levy of **46.97 cents per tonne**, equating to an amount of \$117,490.9 for haulage of up to 250,000 tonnes of material per annum. This assessment was based on a 10-year project duration based on the Fitzroy Model of analysis.

Detailed calculations for the above contribution levy are provided as Attachments B – D.

**2.2 Issue:**

A 'Road safety audit' must be undertaken by a suitably qualified person for the Council Road network which is to be used as a haulage route by the proposed development.

**RESPONSE:**

A Road Safety Audit (RSA) is not a requirement for a Transport and Pavement Impact Assessment under the Guide to Traffic Impact Assessment. The assessment will take considerable time and is a costly exercise, which with consideration that Council is already in possession of a 3<sup>rd</sup> party safety assessment commissioned by themselves, will not provide insight or value in the scope of the project. On this basis, it is considered that an RSA is not warranted for the assessment of the subject application.

**2.3 Issue:**

Please confirm whether there is any haulage associated with the operation that uses an alternate route to that outlined in the application material. If yes, the Traffic and Pavement Impact Assessment (TPIA) must be updated accordingly.

**RESPONSE:**

Only the route identified in the TPIA is and will be used for the haulage operation associated with the Quarry under the current and proposed operations.

**2.4 Issue:**

Please confirm if there is any incoming material to the site as part of the current or proposed operations. If yes, the Traffic and Pavement Impact Assessment (TPIA) must be updated accordingly.

**RESPONSE:**

There is no inbound material accepted to the site as part of the current or proposed operations.

Please contact the undersigned in relation to the above information.

Yours sincerely



**Chris Hewitt**

Principal Civil Engineer RPEQ NO. 5141

ATTACHMENTS

ATTACHMENT A – DATA REQUEST (CORRESPONDENCE)

ATTACHMENT B – PAVEMENT CONTRIBUTION (CALCULATIONS)

ATTACHMENT C – PAVEMENT ROUGHNESS DATA (RAW)

ATTACHMENT D – PAVEMENT ROUGHNESS DATA (IRI CONVERSION)

ATTACHMENT A – DATA REQUEST (CORRESPONDENCE)

**From:** Adithya Anilkumar <[Adithya.Anilkumar@rrc.qld.gov.au](mailto:Adithya.Anilkumar@rrc.qld.gov.au)>  
**Date:** Tuesday, 21 February 2023 at 3:18 pm  
**To:** 'maja@zekacorp.com' <[maja@zekacorp.com](mailto:maja@zekacorp.com)>  
**Subject:** RE: Nine Mile Road

Good Afternoon Maja

I can provide you with the AADT. However, we do not have pavement roughness data. Could you please advise on which section of Nine Mile Road you are interested?

Regards  
Adi

Regards,

**Adithya Anilkumar**  
Technical Officer (Traffic and Transport) | Strategic Infrastructure  
Rockhampton Regional Council  
Ph: 4936 8937 | Fax: 1300 22 55 79 | E-mail: [adithya.anilkumar@rrc.qld.gov.au](mailto:adithya.anilkumar@rrc.qld.gov.au)  
Address: PO Box 1860, Rockhampton Q 4700 | Web: [www.rockhamptonregion.qld.gov.au](http://www.rockhamptonregion.qld.gov.au)  
Like us [www.facebook.com/RockhamptonRegionalCouncil](https://www.facebook.com/RockhamptonRegionalCouncil) Follow us [www.twitter.com/RRCouncil](https://www.twitter.com/RRCouncil)



**ATTACHMENT B- PAVEMENT CONTRIBUTION (CALCULATIONS)**

**Existing Pavement Condition**

The existing condition of the road pavement on Nine Mile Road has been assessed based on pavement roughness data provided by Rockhampton Regional Council (RRC). This data was extrapolated at an average of 9 metres along the road link, measured as values of International Roughness Index (or IRI), as shown in Attachment C.

For the purpose of this assessment, the measure of roughness was converted from IRI to NAASRA roughness to enable the TMR pavement impact assessment methodology to be utilised to assess the impacts of the proposed road haulage operations. This conversion was completed using the following equation from TMR’s Material Testing Manual Part 11: Pavements, with the resultant pavement roughness calculations are provided in Appendix D.

$$N \text{ (counts/km)} = (26.49 \text{ IRI}) - 1.27$$

Using the converted pavement data, the road links were then divided into sections of homogenous pavement conditions based on similar roughness, with the indicative pavement sections applicable to the analysis (Ch 0.0 - Ch 4.5) along Nine Mile Road shown in Figures B1 and B2.

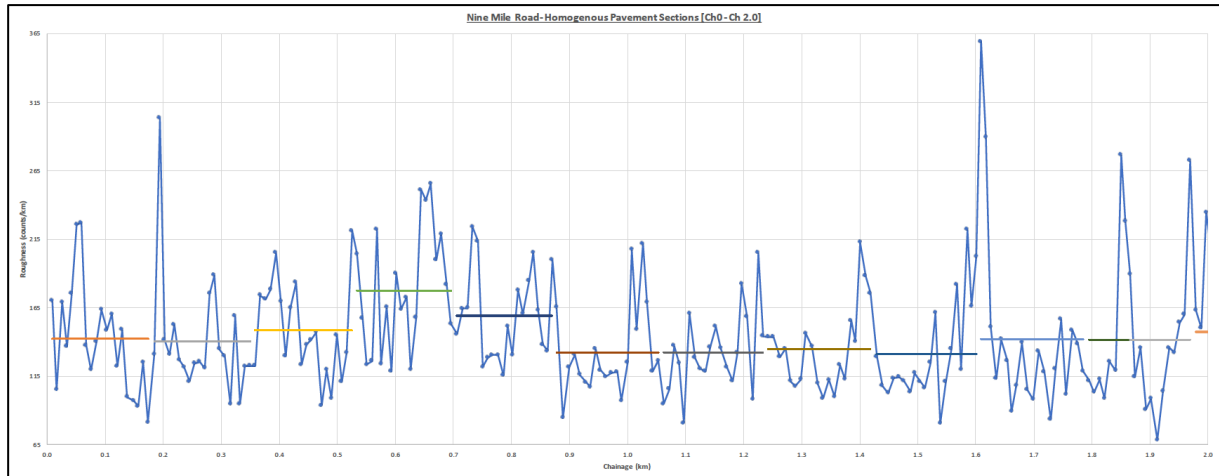


Figure B1: Homogenous pavement sections on Nine Mile Road (Ch 0.0 - Ch 2.0)

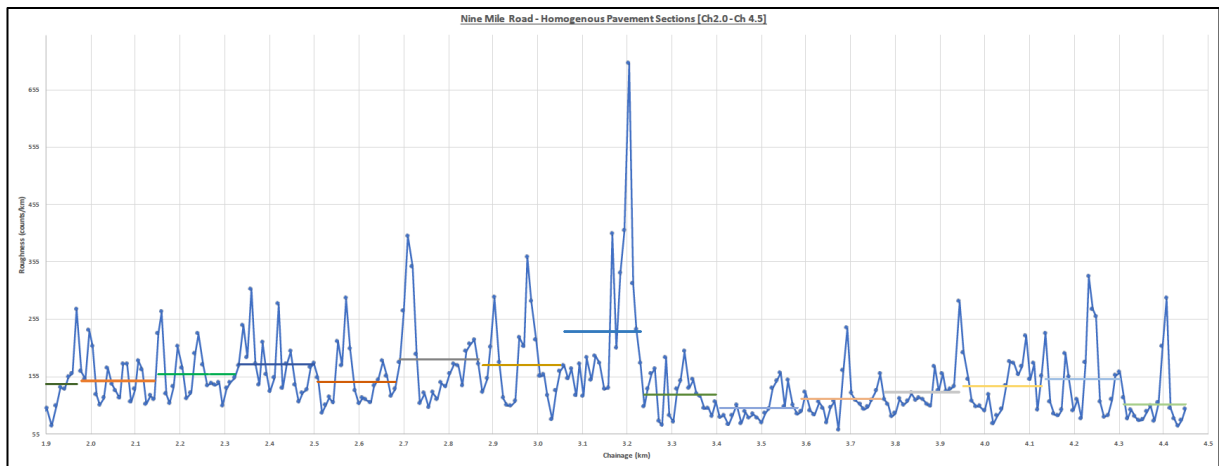


Figure B2: Homogenous pavement sections on Nine Mile Road (Ch 2.0 - Ch 4.5)

Based on the information provided in Figures B1 and B2, the existing condition of the identified homogenous pavement sections of Nine Mile Road are summarised below in Table B1.

Table B1: Existing pavement condition (NAASRA Roughness)

Segment ID	Homogenous Pavement Section		Data Year	Average NAASRA Roughness (Counts / km)
	Start (km)	End (km)		
<b>Nine Mile Road</b>				
01	0.00	0.17	2021	142
02	0.17	0.35		140
03	0.35	0.53		148
04	0.53	0.70		177
05	0.70	0.87		159
06	0.87	1.05		132
07	1.05	1.23		132
08	1.23	1.42		135
09	1.42	1.60		131
10	1.60	1.79		142
11	1.79	1.97		142
12	1.97	2.14		147
13	2.14	2.32		159
14	2.32	2.50		176
15	2.50	2.68		146
16	2.68	2.87		185
17	2.87	3.05		175
18	3.05	3.23		233
19	3.23	3.40		123
20	3.40	3.58		100
21	3.58	3.77		116
22	3.77	3.94		128
23	3.94	4.13		138
24	4.13	4.30		150
25	4.28	4.45		106

In addition to the assessment of the current pavement conditions, estimates were also generated for the forecasted background pavement loadings for each of the identified road segments. Traffic loads on the pavement are defined in terms of ESA for granular pavements and Standard Axle Repetitions (SAR) for other pavement types. For this assessment, it was assumed that all relevant road segments will be granular pavements.

The traffic loadings (ESAs) for the background traffic heavy vehicle component were calculated based on the heavy vehicle percentages identified in the provided traffic data for the relevant sections of the road network, utilising the following assumptions:

- AADT received by RRC was collected in 2022; an average of 465 vehicles per day (vpd) including 38.6% heavy vehicles have been recorded. An even split between gazettal and against gazettal was assumed.
- The existing percentage of heavy vehicles identified in the provided traffic count data will be maintained in future years.
- ESAs per Heavy Vehicle (ESAs/HV) rates of 3.2 ESAs/HV were adopted for the purpose of the assessment based on advice previously received from TMR for all roads not forming part of the Bruce Highway.

A summary of the current (2023) background ESAs calculated for the relevant road segment is provided in Table B2.

Table B2: Existing (2023) background traffic loadings (ESAs)

Segment ID	AADT Segment		Base Data Year	Base Year HV % & Volume		10 Yr GR %	2023 HV Volumes		ESAs / HV	No. Days	Background ESAs (2023)	
	Start (km)	End (km)		Gaz	A-Gaz		Gaz	A-Gaz			Gaz	A-Gaz
				38.6 %	38.6%		38.6%	38.6%				
<b>Nine Mile Road</b>												
-	0.00	4.449	2022	90	90	2%	92	92	3.2	365	107,465	107,465



### **Design Traffic Volumes**

Based on the haulage operation of the subject application, an estimate of the expected daily and peak hour transport vehicle movements are established as shown in Table B3 below.

Table B3: Transport vehicle generation road haulage scenarios (250,000 tonnes annually)


<b>Haulage Scenario</b>		<b>Annual Haulage Scenario</b>
		250,000
<b>Days per year</b>		300
<b>Tonnage per day</b>		833.3
<b>Trucks</b>	<b>Capacity (t)</b>	
<b>No. Truck + Dogs per day</b>	36	24 (23.15)
<b>Up to Bruce Hwy / Capricorn Hwy (100%)</b>	36	24 (23.15)
<b>Bruce Hwy / Capricorn Hwy South (62.5%)</b>	36	15 (14.47)
<b>Bruce Hwy / Capricorn Hwy West (37.5%)</b>	36	9 (8.68)
<b>Hours per day</b>		12
<b>Tonnage per hour</b>		69.44
<b>No. Truck + Dogs per hour</b>		2 (1.93)

The assessment of potential pavement impacts of the project involves a comparison between the existing pavement loading ESAs and the estimated increase in ESAs generated by additional heavy vehicles associated with the proposed haulage operations.

Table B4 shows the assumed configuration of the design haulage vehicle, as well as the average loaded and unloaded ESAs/HV values as well as SAR4 and SAR5 values for the vehicle configurations (noting the assumption that the vehicles will travel from the quarry fully loaded and return unloaded).

For the purposes of determining impacts along Nine Mile Road, the following SAR4 and SAR5 values have been applied for the development generated heavy vehicles, in accordance with the Pavement Impact Assessment Practice Note. It is noted that the values adopted for the loaded vehicles are conservative (high) as they assume that each vehicle is carrying the maximum legal payload.

Table B4: Assumed vehicle configurations and SAR4/SAR5 Values

Vehicle Class	Vehicle Configuration	SAR4 (Class 10)		SAR5 (Class 10)	
		Unloaded	Loaded	Unloaded	Loaded
Truck + Dog (19) (3-axle truck / 4-axle dog)*		0.53	6.3	0.42	7.09

\*As per NVHR Vehicle Configuration Table

The comparison of the background and development pavement loadings along the identified transport route has been undertaken based on the above vehicle combination. A summary of resultant contribution along Nine Mile Road in the context of the full analysis including the State controlled network is provided in Tables B5 and B6, with calculations associated with the Nine Mile Road section of analysis shown in Figures B3 and B4.

Table B5: Recommended Project pavement contributions (route analysis)

Route Section	Vehicle Configuration	Haulage Volume (tonnes)	Jurisdiction	Contribution Calculation Method	Cents / tonne
Nine Mile Road - Ch0.0 - Ch4.5	Truck + Dog	250,000	RRC	Fitzroy Method	46.97
Ridgelands Road - 511 Ch0.0 - Ch4.7	Truck + Dog	250,000	DTMR	Marginal Cost	7.53
Bruce Highway - 10F Ch0.0 - Ch0.9	Truck + Dog	250,000	DTMR	Marginal Cost	0
Bruce Highway - 10E Ch106.0 - 121.1	Truck + Dog	250,000	DTMR	Marginal Cost	0
Capricorn Highway - 16A Ch0.0 - Ch10.0	Truck + Dog	250,000	DTMR	Marginal Cost	0

Table B6: Estimated route contributions for haulage of 250,000 tonnes of material annually

Route Section	Length	Cents / tonne	Cents / tonne / km	Contribution
Nine Mile Road	4.5	46.97	10.44	\$117,430.90
<b>TOTAL RRC JURISDICTION</b>	<b>4.5</b>	<b>46.97</b>	<b>10.44</b>	<b>\$117,430.90</b>
Ridgelands Road - 511 Ch0.0 - Ch4.7	4.7	7.53	1.60	\$18,833.94
<b>TOTAL DTMR JURISDICTION</b>	<b>4.7</b>	<b>7.53</b>	<b>1.60</b>	<b>\$18,833.94</b>
<b>TOTAL</b>	<b>9.6</b>	<b>54.5</b>	<b>5.58</b>	<b>\$136,264.84</b>

**Vehicle Combination / ESA Calculation**

	Truck + 4 Dog		O	OO	OO	OO	Totals
	Axes	Single Tyres	Single	Tandem Dual	Tandem Dual	Tandem Dual	
Legal Loading (t)			6	16.5	16.50	16.50	55.50 tonne
Base Load / ESA			5.4	13.8	13.8	13.8	
Unloaded Axle Group Load (t)			4.5	5	5	5	19.5 tonne
ESA's			0.482	0.017	0.017	0.017	0.53 ESA
Loaded Axle Group Load (t)			6.00	16.50	16.50	16.50	55.50 tonne
ESA's [1]			1.524	2.044	2.044	2.044	7.66 ESA
Payload =			36.0	tonne			ESA/t Payload = 0.0148 unloaded
Max Legal Payload			36.0	tonne [2]			ESA/t Payload = 0.2126 loaded

Figure B3: Adopted Heavy Vehicle Combination Characteristics

**100 NINE MILE ROAD PIA (Truck + Dog, 250,000 tonnes / yr)**

**Developer Contribution Summary**

Sect No.	Road No.	Road Name	Road Sections	Lgth (km)	Dev. Contribution (@ the PV Base Yr.)						
					Reduced Pvt Life		Rehab (\$)		Mtce (\$)	Total (\$)	
					To	From	To	From	To		
1	A	Nine Mile Road	Section 1	0.174	1.5%	23.0%	\$11,115	\$9,698	\$20,813		
2	A	Nine Mile Road	Section 2	0.176	1.5%	22.9%	\$10,783	\$9,809	\$20,592		
3	A	Nine Mile Road	Section 3	0.175	1.5%	23.5%	\$12,909	\$9,754	\$22,663		
4	A	Nine Mile Road	Section 4	0.171	1.7%	25.9%	\$24,796	\$9,531	\$34,327		
5	A	Nine Mile Road	Section 5	0.174	1.6%	24.4%	\$16,475	\$9,698	\$26,173		
6	A	Nine Mile Road	Section 6	0.183	1.4%	22.2%	\$9,276	\$10,200	\$19,475		
7	A	Nine Mile Road	Section 7	0.18	1.4%	22.2%	\$9,124	\$10,032	\$19,156		
8	A	Nine Mile Road	Section 8	0.185	1.4%	22.4%	\$9,913	\$10,311	\$20,224		
9	A	Nine Mile Road	Section 9	0.183	1.4%	22.1%	\$9,004	\$10,200	\$19,204		
10	A	Nine Mile Road	Section 10	0.184	1.5%	23.0%	\$11,672	\$10,255	\$21,928		
11	A	Nine Mile Road	Section 11	0.184	1.5%	22.9%	\$11,561	\$10,255	\$21,816		
12	A	Nine Mile Road	Section 12	0.173	1.5%	23.4%	\$12,418	\$9,642	\$22,060		
13	A	Nine Mile Road	Section 13	0.18	1.6%	24.3%	\$17,000	\$10,032	\$27,033		
14	A	Nine Mile Road	Section 14	0.178	1.7%	25.8%	\$25,253	\$9,921	\$35,174		
15	A	Nine Mile Road	Section 15	0.181	1.5%	23.3%	\$12,574	\$10,088	\$22,662		
16	A	Nine Mile Road	Section 16	0.187	1.7%	26.6%	\$32,278	\$10,423	\$42,701		
17	A	Nine Mile Road	Section 17	0.182	1.7%	25.7%	\$24,852	\$10,144	\$34,996		
18	A	Nine Mile Road	Section 18	0.18	2.0%	31.4%	\$96,815	\$10,032	\$106,847		
19	A	Nine Mile Road	Section 19	0.168	1.4%	21.5%	\$6,865	\$9,364	\$16,228		
20	A	Nine Mile Road	Section 20	0.183	1.6%	24.4%	\$17,745	\$10,200	\$27,944		
21	A	Nine Mile Road	Section 21	0.186	1.4%	21.0%	\$6,390	\$10,367	\$16,757		
22	A	Nine Mile Road	Section 22	0.176	1.4%	21.9%	\$8,015	\$9,809	\$17,825		
23	A	Nine Mile Road	Section 23	0.184	1.5%	22.7%	\$10,731	\$10,255	\$20,986		
24	A	Nine Mile Road	Section 24	0.175	1.5%	23.6%	\$13,464	\$9,754	\$23,218		
25	A	Nine Mile Road	Section 25	0.165	1.6%	25.0%	\$18,470	\$9,196	\$27,667		
26											
27											
28											
29											
30											
31				4.467				\$0	\$248,970		
32				0							
Totals [1] =				11.8			\$0	\$765,601	\$0	\$657,679	\$1,174,309

Start of Development Traffic =

ESA Increase Trigger =

Development Duration  years

Total Tonnage =  tonnes

Developer Contribution expressed as a Cost per Tonne (@ the PV Base Yr.)

cents / tonne =

cents / tonne / km =

Protection Passord for all worksheets = mrd

[1] Includes only road sections that are subject to Development Generated Traffic > 5%

Figure B4: Pavement Impact Contribution Calculation  
(Fitzroy Model)

**ATTACHMENT C – PAVEMENT ROUGHNESS DATA (RAW)**

Record_ID	Road_ID	Road_Name	Time_Stamp	Longitude	Latitude	Sealed	Chainage	IRI_Value	Altitude	Material	RoughoPeak	RoughoRMS	Heading	Speed	Pitch	Roll
1	10545	Nine Mile Road~006400~5B~Pink Lily	2021-Oct-11 08:19:56 475	150.466065	-23.354522	TRUE	0	6.468379	15	Asphalt	0.6283	0.0768	264	21	-4.8	-3.3
2	10545	Nine Mile Road~006400~5B~Pink Lily	2021-Oct-11 08:19:57 976	150.466011	-23.35458	TRUE	9	4.006039	15	Asphalt	0.1771	0.047	238	20	4.3	-0.9
3	10545	Nine Mile Road~006400~5B~Pink Lily	2021-Oct-11 08:19:59 072	150.465955	-23.354638	TRUE	17	6.43108	15	Asphalt	0.2202	0.0781	228	24	8.5	0.7
4	10545	Nine Mile Road~006400~5B~Pink Lily	2021-Oct-11 08:19:59 945	150.465895	-23.354692	TRUE	26	5.204923	15	Asphalt	0.1863	0.0656	227	29	4.5	-0.2
5	10545	Nine Mile Road~006400~5B~Pink Lily	2021-Oct-11 08:20:00 820	150.465833	-23.354742	TRUE	34	6.671174	15	Asphalt	0.2235	0.0863	228	32	4.9	1.2
6	10545	Nine Mile Road~006400~5B~Pink Lily	2021-Oct-11 08:20:01 476	150.465773	-23.354787	TRUE	42	8.561786	15	Asphalt	0.2917	0.1137	229	35	2.5	-1.1
7	10545	Nine Mile Road~006400~5B~Pink Lily	2021-Oct-11 08:20:02 133	150.465707	-23.354833	TRUE	51	8.618657	15	Asphalt	0.3809	0.1184	232	39	3.2	-2.8
8	10545	Nine Mile Road~006400~5B~Pink Lily	2021-Oct-11 08:20:02 789	150.465647	-23.354873	TRUE	59	5.233804	14	Asphalt	0.1901	0.0729	234	41	3.9	1.4
9	10545	Nine Mile Road~006400~5B~Pink Lily	2021-Oct-11 08:20:03 339	150.465582	-23.35491	TRUE	67	4.562759	14	Asphalt	0.1923	0.0646	236	43	1.4	-5.9
10	10545	Nine Mile Road~006400~5B~Pink Lily	2021-Oct-11 08:20:04 107	150.465497	-23.354947	TRUE	76	5.340467	14	Asphalt	0.2039	0.0771	240	45	2.2	1.4
11	10545	Nine Mile Road~006400~5B~Pink Lily	2021-Oct-11 08:20:04 648	150.465418	-23.354973	TRUE	85	6.217687	14	Asphalt	0.2773	0.0907	244	46	0.2	-6.1
12	10545	Nine Mile Road~006400~5B~Pink Lily	2021-Oct-11 08:20:05 306	150.465338	-23.355	TRUE	94	5.650499	13	Asphalt	0.1854	0.0839	246	48	-4	-3.6
13	10545	Nine Mile Road~006400~5B~Pink Lily	2021-Oct-11 08:20:05 851	150.465257	-23.355025	TRUE	103	6.094455	13	Asphalt	0.2328	0.0914	248	49	-3.1	-1.2
14	10545	Nine Mile Road~006400~5B~Pink Lily	2021-Oct-11 08:20:06 511	150.465173	-23.355048	TRUE	112	4.661131	13	Asphalt	0.1836	0.0704	250	50	-2.8	0
15	10545	Nine Mile Road~006400~5B~Pink Lily	2021-Oct-11 08:20:07 058	150.465093	-23.355068	TRUE	121	5.67047	12	Asphalt	0.2431	0.0858	251	50	-3.2	-3.1
16	10545	Nine Mile Road~006400~5B~Pink Lily	2021-Oct-11 08:20:07 714	150.465008	-23.35509	TRUE	129	3.812276	12	Asphalt	0.116	0.058	253	51	-2	-1.1
17	10545	Nine Mile Road~006400~5B~Pink Lily	2021-Oct-11 08:20:08 261	150.464927	-23.35511	TRUE	138	3.708407	12	Asphalt	0.1453	0.0564	253	51	-2.2	-2.1
18	10545	Nine Mile Road~006400~5B~Pink Lily	2021-Oct-11 08:20:09 023	150.464818	-23.355137	TRUE	149	3.559094	12	Asphalt	0.1465	0.0541	254	51	-2.8	-5.9
19	10545	Nine Mile Road~006400~5B~Pink Lily	2021-Oct-11 08:20:09 679	150.464735	-23.355157	TRUE	157	4.773069	12	Asphalt	0.2043	0.0728	254	51	-2.5	2.7
20	10545	Nine Mile Road~006400~5B~Pink Lily	2021-Oct-11 08:20:10 231	150.464652	-23.355177	TRUE	166	3.111157	12	Asphalt	0.142	0.0472	255	51	-1.8	-4.1
21	10545	Nine Mile Road~006400~5B~Pink Lily	2021-Oct-11 08:20:10 887	150.464568	-23.355193	TRUE	174	4.987299	12	Asphalt	0.2503	0.0761	256	51	-3.1	-2.8
22	10545	Nine Mile Road~006400~5B~Pink Lily	2021-Oct-11 08:20:11 542	150.464447	-23.355215	TRUE	185	11.498003	11	Asphalt	0.4139	0.1781	256	52	-4	-4.8
23	10545	Nine Mile Road~006400~5B~Pink Lily	2021-Oct-11 08:20:12 198	150.464388	-23.355235	TRUE	194	5.377089	11	Asphalt	0.2008	0.0829	256	52	-2.9	1.7
24	10545	Nine Mile Road~006400~5B~Pink Lily	2021-Oct-11 08:20:12 742	150.464307	-23.355255	TRUE	202	4.984888	11	Asphalt	0.1801	0.0768	255	52	-3	3.1
25	10545	Nine Mile Road~006400~5B~Pink Lily	2021-Oct-11 08:20:13 399	150.464227	-23.355275	TRUE	211	5.805271	12	Asphalt	0.2001	0.0887	255	51	-2.1	-1.8
26	10545	Nine Mile Road~006400~5B~Pink Lily	2021-Oct-11 08:20:13 840	150.464157	-23.355292	TRUE	219	4.837009	12	Asphalt	0.1564	0.0745	255	52	-2.5	-0.2
27	10545	Nine Mile Road~006400~5B~Pink Lily	2021-Oct-11 08:20:14 492	150.464072	-23.355312	TRUE	228	4.637693	13	Asphalt	0.1732	0.0714	255	52	-2.6	-2.5
28	10545	Nine Mile Road~006400~5B~Pink Lily	2021-Oct-11 08:20:15 041	150.46399	-23.355333	TRUE	236	4.239062	13	Asphalt	0.1624	0.0652	254	52	-2.3	-0.6
29	10545	Nine Mile Road~006400~5B~Pink Lily	2021-Oct-11 08:20:15 697	150.463908	-23.355355	TRUE	245	4.740565	13	Asphalt	0.1916	0.073	254	52	-2.8	-1.2
30	10545	Nine Mile Road~006400~5B~Pink Lily	2021-Oct-11 08:20:16 242	150.463827	-23.355377	TRUE	254	4.779143	13	Asphalt	0.1497	0.0736	253	52	-2.5	-2.9
31	10545	Nine Mile Road~006400~5B~Pink Lily	2021-Oct-11 08:20:17 012	150.463737	-23.355408	TRUE	263	4.605545	13	Asphalt	0.2351	0.0709	252	52	-2.8	-2.9
32	10545	Nine Mile Road~006400~5B~Pink Lily	2021-Oct-11 08:20:17 558	150.463658	-23.35544	TRUE	272	6.656565	13	Asphalt	0.2256	0.1028	250	52	-1.9	-6.5
33	10545	Nine Mile Road~006400~5B~Pink Lily	2021-Oct-11 08:20:18 214	150.463582	-23.355472	TRUE	280	7.170928	14	Asphalt	0.2088	0.1108	248	52	-2.9	-1.9
34	10545	Nine Mile Road~006400~5B~Pink Lily	2021-Oct-11 08:20:18 757	150.463508	-23.355508	TRUE	288	5.139196	14	Asphalt	0.1855	0.0792	246	52	-3.2	6.3
35	10545	Nine Mile Road~006400~5B~Pink Lily	2021-Oct-11 08:20:19 523	150.463425	-23.355557	TRUE	297	4.939881	14	Asphalt	0.2225	0.0761	243	52	-2.6	-1.5
36	10545	Nine Mile Road~006400~5B~Pink Lily	2021-Oct-11 08:20:20 074	150.463353	-23.35556	TRUE	306	3.608968	14	Asphalt	0.1456	0.0554	240	52	-2	-4.9
37	10545	Nine Mile Road~006400~5B~Pink Lily	2021-Oct-11 08:20:20 732	150.463275	-23.355657	TRUE	316	6.039331	14	Asphalt	0.1817	0.0932	237	52	-3.2	-3.7
38	10545	Nine Mile Road~006400~5B~Pink Lily	2021-Oct-11 08:20:21 387	150.463213	-23.355708	TRUE	324	3.621827	14	Asphalt	0.1301	0.0556	234	52	-2.8	-7.1
39	10545	Nine Mile Road~006400~5B~Pink Lily	2021-Oct-11 08:20:21 932	150.463155	-23.355763	TRUE	332	4.656982	13	Asphalt	0.1768	0.0717	231	52	-2.3	-3
40	10545	Nine Mile Road~006400~5B~Pink Lily	2021-Oct-11 08:20:22 588	150.463097	-23.355822	TRUE	341	4.67627	13	Asphalt	0.1649	0.072	228	52	-2.4	5.6
41	10545	Nine Mile Road~006400~5B~Pink Lily	2021-Oct-11 08:20:23 136	150.463043	-23.35588	TRUE	350	4.669841	14	Asphalt	0.1834	0.0719	226	52	-3	-0.6
42	10545	Nine Mile Road~006400~5B~Pink Lily	2021-Oct-11 08:20:23 792	150.462993	-23.355942	TRUE	358	6.611612	14	Asphalt	0.2439	0.1031	223	53	-1.9	-4
43	10545	Nine Mile Road~006400~5B~Pink Lily	2021-Oct-11 08:20:24 339	150.462947	-23.356008	TRUE	367	6.508687	14	Asphalt	0.222	0.1005	220	52	-3.8	1.3
44	10545	Nine Mile Road~006400~5B~Pink Lily	2021-Oct-11 08:20:24 995	150.462905	-23.356077	TRUE	376	6.772297	14	Asphalt	0.2043	0.1046	217	52	-2.8	-5.5
45	10545	Nine Mile Road~006400~5B~Pink Lily	2021-Oct-11 08:20:25 541	150.462863	-23.356145	TRUE	385	7.788163	14	Asphalt	0.2403	0.1204	214	52	-2.5	-5.4
46	10545	Nine Mile Road~006400~5B~Pink Lily	2021-Oct-11 08:20:26 197	150.462823	-23.356215	TRUE	394	6.444391	14	Asphalt	0.2078	0.0995	211	52	-3.2	5.4
47	10545	Nine Mile Road~006400~5B~Pink Lily	2021-Oct-11 08:20:26 746	150.462788	-23.356288	TRUE	403	4.933451	14	Asphalt	0.1587	0.076	209	52	-2.1	-0.3
48	10545	Nine Mile Road~006400~5B~Pink Lily	2021-Oct-11 08:20:27 403	150.462758	-23.356362	TRUE	411	6.270794	14	Asphalt	0.2357	0.0968	206	52	-2.8	-1.2
49	10545	Nine Mile Road~006400~5B~Pink Lily	2021-Oct-11 08:20:27 946	150.462732	-23.356437	TRUE	420	6.971613	14	Asphalt	0.2345	0.1077	204	52	-2.3	1.7
50	10545	Nine Mile Road~006400~5B~Pink Lily	2021-Oct-11 08:20:28 607	150.462712	-23.356513	TRUE	429	4.701989	14	Asphalt	0.2001	0.0724	201	52	-3.1	0.4
51	10545	Nine Mile Road~006400~5B~Pink Lily	2021-Oct-11 08:20:29 154	150.462692	-23.35659	TRUE	438	5.254928	14	Asphalt	0.1823	0.081	198	52	-3.6	4.7
52	10545	Nine Mile Road~006400~5B~Pink Lily	2021-Oct-11 08:20:29 806	150.462673	-23.356668	TRUE	447	5.389948	14	Asphalt	0.2188	0.0831	196	52	-2.7	3

Record_ID	Road_ID	Road_Name	Time_Stamp	Longitude	Latitude	Sealed	Chainage	IRI_Value	Altitude	Material	RoughoPeak	RoughoRMS	Heading	Speed	Pitch	Roll
53	10545	Nine Mile Road~006400~5B~Pink Lily	2021-Oct-11 08:20:30 352	150.462662	-23.356745	TRUE	455	5.595693		15 Asphalt	0.1754	0.0863	194	52	-2.7	1
54	10545	Nine Mile Road~006400~5B~Pink Lily	2021-Oct-11 08:20:31 011	150.462652	-23.356825	TRUE	464	3.583225		14 Asphalt	0.1815	0.0555	192	52	-2.6	-3.9
55	10545	Nine Mile Road~006400~5B~Pink Lily	2021-Oct-11 08:20:31 558	150.462643	-23.356902	TRUE	473	4.560539		14 Asphalt	0.1546	0.0702	191	52	-2.5	-5.7
56	10545	Nine Mile Road~006400~5B~Pink Lily	2021-Oct-11 08:20:32 214	150.462635	-23.35698	TRUE	482	3.776136		15 Asphalt	0.1165	0.058	190	52	-3.2	2.4
57	10545	Nine Mile Road~006400~5B~Pink Lily	2021-Oct-11 08:20:32 762	150.462625	-23.357057	TRUE	490	5.524968		15 Asphalt	0.2048	0.0852	189	52	-3	-2.7
58	10545	Nine Mile Road~006400~5B~Pink Lily	2021-Oct-11 08:20:33 415	150.462615	-23.357135	TRUE	499	4.232633		15 Asphalt	0.1672	0.0651	188	52	-2.5	-0.2
59	10545	Nine Mile Road~006400~5B~Pink Lily	2021-Oct-11 08:20:33 965	150.462603	-23.35721	TRUE	507	5.029894		15 Asphalt	0.1933	0.0775	188	52	-2.7	-1.1
60	10545	Nine Mile Road~006400~5B~Pink Lily	2021-Oct-11 08:20:34 619	150.462593	-23.357288	TRUE	516	8.398968		14 Asphalt	0.3177	0.1299	188	52	-6.6	-0.3
61	10545	Nine Mile Road~006400~5B~Pink Lily	2021-Oct-11 08:20:35 166	150.462582	-23.357363	TRUE	525	7.752824		14 Asphalt	0.2676	0.1187	188	51	-9.9	3.3
62	10545	Nine Mile Road~006400~5B~Pink Lily	2021-Oct-11 08:20:35 823	150.46257	-23.357445	TRUE	534	5.988591		14 Asphalt	0.2454	0.0898	188	49	-13.3	-1.2
63	10545	Nine Mile Road~006400~5B~Pink Lily	2021-Oct-11 08:20:36 590	150.46256	-23.357522	TRUE	543	4.705097		14 Asphalt	0.2315	0.0691	187	47	-14.8	2
64	10545	Nine Mile Road~006400~5B~Pink Lily	2021-Oct-11 08:20:37 357	150.462553	-23.357598	TRUE	551	4.80742		14 Asphalt	0.157	0.0681	186	43	-14.5	-0.6
65	10545	Nine Mile Road~006400~5B~Pink Lily	2021-Oct-11 08:20:38 339	150.462543	-23.357677	TRUE	560	8.43482		13 Asphalt	0.2605	0.1139	186	37	-15.7	-0.8
66	10545	Nine Mile Road~006400~5B~Pink Lily	2021-Oct-11 08:20:39 653	150.462538	-23.357752	TRUE	568	4.717437		13 Asphalt	0.1564	0.0594	184	29	-12.3	-1.1
67	10545	Nine Mile Road~006400~5B~Pink Lily	2021-Oct-11 08:20:41 510	150.46253	-23.357825	TRUE	576	6.292543		13 Asphalt	0.2427	0.0736	186	19	-8.6	-0.8
68	10545	Nine Mile Road~006400~5B~Pink Lily	2021-Oct-11 08:20:43 366	150.462517	-23.357897	TRUE	585	4.515806		12 Asphalt	0.1444	0.0519	190	17	3.5	-0.1
69	10545	Nine Mile Road~006400~5B~Pink Lily	2021-Oct-11 08:20:44 789	150.462502	-23.357972	TRUE	593	7.220883		12 Asphalt	0.2711	0.0858	191	21	5.3	-1.3
70	10545	Nine Mile Road~006400~5B~Pink Lily	2021-Oct-11 08:20:45 779	150.462483	-23.358042	TRUE	601	6.228289		12 Asphalt	0.192	0.0762	191	25	5.5	1
71	10545	Nine Mile Road~006400~5B~Pink Lily	2021-Oct-11 08:20:46 763	150.462467	-23.358118	TRUE	610	6.557303		12 Asphalt	0.2094	0.0828	190	29	5	-2.5
72	10545	Nine Mile Road~006400~5B~Pink Lily	2021-Oct-11 08:20:47 633	150.462452	-23.3582	TRUE	619	4.577		12 Asphalt	0.1603	0.0595	190	33	6.6	4.4
73	10545	Nine Mile Road~006400~5B~Pink Lily	2021-Oct-11 08:20:48 404	150.46244	-23.358273	TRUE	627	6.004637		12 Asphalt	0.2067	0.0809	189	37	6.5	-5.8
74	10545	Nine Mile Road~006400~5B~Pink Lily	2021-Oct-11 08:20:49 058	150.462428	-23.358352	TRUE	636	9.524118		12 Asphalt	0.2647	0.1332	188	41	2.2	2.1
75	10545	Nine Mile Road~006400~5B~Pink Lily	2021-Oct-11 08:20:49 714	150.462418	-23.358423	TRUE	644	9.239287		12 Asphalt	0.4505	0.1315	188	43	2.2	0.1
76	10545	Nine Mile Road~006400~5B~Pink Lily	2021-Oct-11 08:20:50 258	150.462407	-23.358497	TRUE	653	9.687418		12 Asphalt	0.3615	0.1417	188	46	0.8	-0.4
77	10545	Nine Mile Road~006400~5B~Pink Lily	2021-Oct-11 08:20:50 914	150.462395	-23.358572	TRUE	661	7.587343		13 Asphalt	0.3556	0.1129	188	48	2.1	-1.6
78	10545	Nine Mile Road~006400~5B~Pink Lily	2021-Oct-11 08:20:51 463	150.462385	-23.358652	TRUE	670	8.31097		13 Asphalt	0.2652	0.1249	188	49	0.5	2.6
79	10545	Nine Mile Road~006400~5B~Pink Lily	2021-Oct-11 08:20:52 120	150.462373	-23.358733	TRUE	679	6.907318		13 Asphalt	0.2701	0.1067	188	52	1.7	-2.2
80	10545	Nine Mile Road~006400~5B~Pink Lily	2021-Oct-11 08:20:52 669	150.462358	-23.358817	TRUE	688	5.82861		14 Asphalt	0.2784	0.0917	188	54	0.7	-1.5
81	10545	Nine Mile Road~006400~5B~Pink Lily	2021-Oct-11 08:20:53 214	150.462345	-23.358888	TRUE	696	5.540495		13 Asphalt	0.2338	0.088	189	55	-1	-1
82	10545	Nine Mile Road~006400~5B~Pink Lily	2021-Oct-11 08:20:53 757	150.46233	-23.358973	TRUE	706	6.252018		14 Asphalt	0.2294	0.1004	189	56	-2.9	-5.3
83	10545	Nine Mile Road~006400~5B~Pink Lily	2021-Oct-11 08:20:54 415	150.462315	-23.359058	TRUE	716	6.264378		13 Asphalt	0.2398	0.1006	189	56	-4.4	0.4
84	10545	Nine Mile Road~006400~5B~Pink Lily	2021-Oct-11 08:20:54 963	150.462303	-23.359145	TRUE	725	8.502053		13 Asphalt	0.2959	0.1382	188	57	-4.1	-5.5
85	10545	Nine Mile Road~006400~5B~Pink Lily	2021-Oct-11 08:20:55 512	150.462293	-23.359215	TRUE	733	8.110502		13 Asphalt	0.2609	0.1318	188	57	-3.9	-7.1
86	10545	Nine Mile Road~006400~5B~Pink Lily	2021-Oct-11 08:20:55 948	150.462285	-23.359288	TRUE	742	4.635492		13 Asphalt	0.2361	0.075	188	57	-1.8	-0.8
87	10545	Nine Mile Road~006400~5B~Pink Lily	2021-Oct-11 08:20:56 607	150.462272	-23.359373	TRUE	751	4.892446		13 Asphalt	0.1943	0.0792	188	57	-2.3	-1.3
88	10545	Nine Mile Road~006400~5B~Pink Lily	2021-Oct-11 08:20:57 039	150.462262	-23.359445	TRUE	759	4.965862		13 Asphalt	0.1931	0.0804	188	57	-2.3	5.5
89	10545	Nine Mile Road~006400~5B~Pink Lily	2021-Oct-11 08:20:57 588	150.462252	-23.359517	TRUE	767	4.965862		13 Asphalt	0.2086	0.0804	188	57	-2.3	-1
90	10545	Nine Mile Road~006400~5B~Pink Lily	2021-Oct-11 08:20:58 137	150.462235	-23.359602	TRUE	777	4.409126		14 Asphalt	0.1573	0.0713	188	57	-2.5	0
91	10545	Nine Mile Road~006400~5B~Pink Lily	2021-Oct-11 08:20:58 789	150.462223	-23.359687	TRUE	786	5.761199		14 Asphalt	0.2302	0.0934	188	57	-3.2	-1.5
92	10545	Nine Mile Road~006400~5B~Pink Lily	2021-Oct-11 08:20:59 232	150.462215	-23.359758	TRUE	794	4.970265		14 Asphalt	0.2039	0.0813	188	58	-3.6	1.3
93	10545	Nine Mile Road~006400~5B~Pink Lily	2021-Oct-11 08:20:59 773	150.462207	-23.359832	TRUE	802	6.756687		14 Asphalt	0.2452	0.1108	187	58	-2.2	-3.4
94	10545	Nine Mile Road~006400~5B~Pink Lily	2021-Oct-11 08:21:00 429	150.462192	-23.359915	TRUE	812	6.108731		13 Asphalt	0.2211	0.1001	188	58	-2.3	-4.9
95	10545	Nine Mile Road~006400~5B~Pink Lily	2021-Oct-11 08:21:00 869	150.462182	-23.359987	TRUE	820	7.029192		13 Asphalt	0.2215	0.1153	187	58	-3.3	-0.3
96	10545	Nine Mile Road~006400~5B~Pink Lily	2021-Oct-11 08:21:01 523	150.462168	-23.360072	TRUE	830	7.798486		13 Asphalt	0.2462	0.1267	188	57	-2.4	-1.3
97	10545	Nine Mile Road~006400~5B~Pink Lily	2021-Oct-11 08:21:01 966	150.462157	-23.360143	TRUE	838	6.207812		13 Asphalt	0.255	0.1007	188	57	-2.7	-6
98	10545	Nine Mile Road~006400~5B~Pink Lily	2021-Oct-11 08:21:02 507	150.462145	-23.360215	TRUE	846	5.260937		13 Asphalt	0.1941	0.0861	188	58	-3	1.9
99	10545	Nine Mile Road~006400~5B~Pink Lily	2021-Oct-11 08:21:02 948	150.462137	-23.360288	TRUE	854	5.079267		13 Asphalt	0.2128	0.0831	187	58	-2.3	-0.7
100	10545	Nine Mile Road~006400~5B~Pink Lily	2021-Oct-11 08:21:03 493	150.462125	-23.36036	TRUE	862	7.592369		13 Asphalt	0.2875	0.1246	187	58	-1.8	-3
101	10545	Nine Mile Road~006400~5B~Pink Lily	2021-Oct-11 08:21:03 929	150.462113	-23.36043	TRUE	870	6.299581		13 Asphalt	0.2561	0.1022	187	57	-4	3
102	10545	Nine Mile Road~006400~5B~Pink Lily	2021-Oct-11 08:21:04 482	150.462103	-23.360502	TRUE	878	3.240592		13 Asphalt	0.1329	0.0522	188	57	-3.2	-1.6
103	10545	Nine Mile Road~006400~5B~Pink Lily	2021-Oct-11 08:21:05 136	150.462088	-23.360602	TRUE	889	4.637204		13 Asphalt	0.1695	0.0758	187	58	-2.2	2.2
104	10545	Nine Mile Road~006400~5B~Pink Lily	2021-Oct-11 08:21:05 790	150.462077	-23.360685	TRUE	899	4.978098		13 Asphalt	0.1843	0.0806	188	57	-3	-2.2

Record_ID	Road_ID	Road_Name	Time_Stamp	Longitude	Latitude	Sealed	Chainage	IRI_Value	Altitude	Material	RoughoPeak	RoughoRMS	Heading	Speed	Pitch	Roll
105	10545	Nine Mile Road~006400~5B~Pink Lily	2021-Oct-11 08:21:06 339	150.462065	-23.360773	TRUE	909	4.431311	13	Asphalt	0.2079	0.0724	188	58	-2.5	-2.6
106	10545	Nine Mile Road~006400~5B~Pink Lily	2021-Oct-11 08:21:06 995	150.462052	-23.360858	TRUE	918	4.219362	13	Asphalt	0.145	0.0689	188	58	-2.8	-1.3
107	10545	Nine Mile Road~006400~5B~Pink Lily	2021-Oct-11 08:21:07 541	150.462038	-23.360942	TRUE	928	4.090991	13	Asphalt	0.1665	0.0661	188	57	-2.5	-0.3
108	10545	Nine Mile Road~006400~5B~Pink Lily	2021-Oct-11 08:21:08 085	150.462028	-23.361013	TRUE	936	5.137166	13	Asphalt	0.2248	0.0832	187	57	-2.3	0.8
109	10545	Nine Mile Road~006400~5B~Pink Lily	2021-Oct-11 08:21:08 637	150.462013	-23.361098	TRUE	945	4.546369	14	Asphalt	0.1834	0.0743	188	58	-2.5	-1.2
110	10545	Nine Mile Road~006400~5B~Pink Lily	2021-Oct-11 08:21:09 184	150.461998	-23.361168	TRUE	953	4.370754	14	Asphalt	0.1581	0.0714	188	58	-2.5	-5.1
111	10545	Nine Mile Road~006400~5B~Pink Lily	2021-Oct-11 08:21:09 734	150.461985	-23.361253	TRUE	963	4.476424	14	Asphalt	0.1718	0.0724	188	57	-2.5	-0.1
112	10545	Nine Mile Road~006400~5B~Pink Lily	2021-Oct-11 08:21:10 385	150.46197	-23.361337	TRUE	972	4.507014	14	Asphalt	0.18	0.0729	188	57	-3.2	-2.4
113	10545	Nine Mile Road~006400~5B~Pink Lily	2021-Oct-11 08:21:10 933	150.461958	-23.361422	TRUE	982	3.711677	14	Asphalt	0.2015	0.0599	188	57	-2.6	0.1
114	10545	Nine Mile Road~006400~5B~Pink Lily	2021-Oct-11 08:21:11 476	150.461947	-23.361493	TRUE	990	4.776205	14	Asphalt	0.1708	0.0773	188	57	-2.6	2.4
115	10545	Nine Mile Road~006400~5B~Pink Lily	2021-Oct-11 08:21:12 030	150.461935	-23.36158	TRUE	1000	7.876986	14	Asphalt	0.3083	0.1293	188	58	-4.1	-4.1
116	10545	Nine Mile Road~006400~5B~Pink Lily	2021-Oct-11 08:21:12 571	150.461925	-23.361653	TRUE	1008	5.678779	14	Asphalt	0.2106	0.093	188	58	-2.8	-2.2
117	10545	Nine Mile Road~006400~5B~Pink Lily	2021-Oct-11 08:21:13 121	150.461913	-23.361725	TRUE	1016	8.040489	14	Asphalt	0.3383	0.132	188	58	-3.5	-0.9
118	10545	Nine Mile Road~006400~5B~Pink Lily	2021-Oct-11 08:21:13 668	150.461898	-23.361808	TRUE	1026	6.41757	14	Asphalt	0.2547	0.1052	188	58	-3	-2.4
119	10545	Nine Mile Road~006400~5B~Pink Lily	2021-Oct-11 08:21:14 211	150.461888	-23.36188	TRUE	1034	4.51925	14	Asphalt	0.1801	0.0731	188	57	-2.8	-1.4
120	10545	Nine Mile Road~006400~5B~Pink Lily	2021-Oct-11 08:21:14 761	150.461875	-23.361965	TRUE	1043	4.819031	14	Asphalt	0.2069	0.078	188	57	-2.5	0.7
121	10545	Nine Mile Road~006400~5B~Pink Lily	2021-Oct-11 08:21:15 419	150.461863	-23.362052	TRUE	1053	3.619907	14	Asphalt	0.1238	0.0584	188	57	-2.4	1.4
122	10545	Nine Mile Road~006400~5B~Pink Lily	2021-Oct-11 08:21:15 962	150.461852	-23.362137	TRUE	1062	4.03593	14	Asphalt	0.1485	0.0652	188	57	-2.5	-0.8
123	10545	Nine Mile Road~006400~5B~Pink Lily	2021-Oct-11 08:21:16 617	150.461842	-23.362222	TRUE	1072	5.228935	14	Asphalt	0.2279	0.0847	188	57	-2.9	1.3
124	10545	Nine Mile Road~006400~5B~Pink Lily	2021-Oct-11 08:21:17 054	150.46183	-23.362293	TRUE	1080	4.751733	14	Asphalt	0.1743	0.0769	188	57	-2.8	-4.2
125	10545	Nine Mile Road~006400~5B~Pink Lily	2021-Oct-11 08:21:17 712	150.46182	-23.362377	TRUE	1089	3.087643	14	Asphalt	0.1146	0.0497	188	57	-2.4	-3
126	10545	Nine Mile Road~006400~5B~Pink Lily	2021-Oct-11 08:21:18 148	150.46181	-23.362448	TRUE	1097	6.12216	14	Asphalt	0.2159	0.0993	188	57	-3	2.7
127	10545	Nine Mile Road~006400~5B~Pink Lily	2021-Oct-11 08:21:18 808	150.461797	-23.362533	TRUE	1107	4.892446	14	Asphalt	0.229	0.0792	188	57	-2.7	-2.4
128	10545	Nine Mile Road~006400~5B~Pink Lily	2021-Oct-11 08:21:19 351	150.461782	-23.362618	TRUE	1116	4.594814	14	Asphalt	0.1721	0.0751	188	58	-3.3	-2.4
129	10545	Nine Mile Road~006400~5B~Pink Lily	2021-Oct-11 08:21:19 905	150.461772	-23.36269	TRUE	1125	4.522146	14	Asphalt	0.1576	0.0739	188	58	-1.6	0.2
130	10545	Nine Mile Road~006400~5B~Pink Lily	2021-Oct-11 08:21:20 446	150.46176	-23.362775	TRUE	1134	5.186109	14	Asphalt	0.222	0.084	188	57	-3.2	3.1
131	10545	Nine Mile Road~006400~5B~Pink Lily	2021-Oct-11 08:21:20 993	150.461748	-23.362847	TRUE	1142	5.755081	14	Asphalt	0.2153	0.0933	188	57	-3.7	-1.9
132	10545	Nine Mile Road~006400~5B~Pink Lily	2021-Oct-11 08:21:21 540	150.461733	-23.362932	TRUE	1152	5.155519	14	Asphalt	0.2276	0.0835	188	57	-2.7	-3.3
133	10545	Nine Mile Road~006400~5B~Pink Lily	2021-Oct-11 08:21:22 196	150.461722	-23.363018	TRUE	1161	4.629373	14	Asphalt	0.2106	0.0749	188	57	-2.1	-2.2
134	10545	Nine Mile Road~006400~5B~Pink Lily	2021-Oct-11 08:21:22 742	150.46171	-23.363103	TRUE	1171	4.250059	14	Asphalt	0.1499	0.0687	188	57	-2.2	-2.7
135	10545	Nine Mile Road~006400~5B~Pink Lily	2021-Oct-11 08:21:23 403	150.461695	-23.363188	TRUE	1181	5.039278	14	Asphalt	0.2289	0.0816	188	57	-2.7	2.1
136	10545	Nine Mile Road~006400~5B~Pink Lily	2021-Oct-11 08:21:23 838	150.461683	-23.363258	TRUE	1189	6.935851	14	Asphalt	0.2409	0.1126	188	57	-3.4	-1.8
137	10545	Nine Mile Road~006400~5B~Pink Lily	2021-Oct-11 08:21:24 386	150.461672	-23.363332	TRUE	1197	6.023952	14	Asphalt	0.2182	0.0987	188	58	-2.6	4
138	10545	Nine Mile Road~006400~5B~Pink Lily	2021-Oct-11 08:21:24 929	150.461658	-23.363417	TRUE	1206	3.740965	14	Asphalt	0.1339	0.061	188	58	-2.3	-3.6
139	10545	Nine Mile Road~006400~5B~Pink Lily	2021-Oct-11 08:21:25 588	150.461643	-23.363502	TRUE	1216	7.792207	14	Asphalt	0.3691	0.1279	188	58	-3.5	0.2
140	10545	Nine Mile Road~006400~5B~Pink Lily	2021-Oct-11 08:21:26 135	150.461632	-23.363585	TRUE	1225	5.491053	14	Asphalt	0.2403	0.0899	188	58	-3.2	-3.5
141	10545	Nine Mile Road~006400~5B~Pink Lily	2021-Oct-11 08:21:26 680	150.46162	-23.363658	TRUE	1233	5.46683	14	Asphalt	0.239	0.0895	188	58	-2.7	-1.2
142	10545	Nine Mile Road~006400~5B~Pink Lily	2021-Oct-11 08:21:27 227	150.46161	-23.363732	TRUE	1242	5.472886	14	Asphalt	0.2209	0.0896	188	58	-2.5	-4.2
143	10545	Nine Mile Road~006400~5B~Pink Lily	2021-Oct-11 08:21:27 779	150.461597	-23.363817	TRUE	1251	4.915764	14	Asphalt	0.2097	0.0804	188	58	-2.5	-6.8
144	10545	Nine Mile Road~006400~5B~Pink Lily	2021-Oct-11 08:21:28 434	150.461582	-23.363917	TRUE	1262	5.151935	14	Asphalt	0.2464	0.0843	188	58	-2.7	1
145	10545	Nine Mile Road~006400~5B~Pink Lily	2021-Oct-11 08:21:29 086	150.46157	-23.364002	TRUE	1272	4.255697	14	Asphalt	0.1966	0.0695	188	58	-2.4	-0.3
146	10545	Nine Mile Road~006400~5B~Pink Lily	2021-Oct-11 08:21:29 636	150.461558	-23.364085	TRUE	1281	4.104305	14	Asphalt	0.1917	0.067	188	58	-2.9	-3.5
147	10545	Nine Mile Road~006400~5B~Pink Lily	2021-Oct-11 08:21:30 183	150.461548	-23.364157	TRUE	1289	4.292031	14	Asphalt	0.1837	0.0701	188	58	-2.5	-1.8
148	10545	Nine Mile Road~006400~5B~Pink Lily	2021-Oct-11 08:21:30 732	150.461535	-23.364243	TRUE	1299	5.563721	14	Asphalt	0.1837	0.0911	188	58	-3	3.7
149	10545	Nine Mile Road~006400~5B~Pink Lily	2021-Oct-11 08:21:31 274	150.461523	-23.364315	TRUE	1307	5.200381	14	Asphalt	0.1955	0.0851	188	58	-2.9	0.4
150	10545	Nine Mile Road~006400~5B~Pink Lily	2021-Oct-11 08:21:31 935	150.461508	-23.364413	TRUE	1318	4.188879	14	Asphalt	0.1832	0.0677	188	57	-2.6	-0.2
151	10545	Nine Mile Road~006400~5B~Pink Lily	2021-Oct-11 08:21:32 589	150.461495	-23.3645	TRUE	1328	3.778974	15	Asphalt	0.142	0.061	188	57	-2.5	-2.5
152	10545	Nine Mile Road~006400~5B~Pink Lily	2021-Oct-11 08:21:33 136	150.46148	-23.364583	TRUE	1337	4.286767	15	Asphalt	0.1829	0.0693	188	57	-2.6	-1
153	10545	Nine Mile Road~006400~5B~Pink Lily	2021-Oct-11 08:21:33 788	150.461467	-23.364668	TRUE	1347	3.8218	15	Asphalt	0.1752	0.0617	188	57	-2.3	-3.1
154	10545	Nine Mile Road~006400~5B~Pink Lily	2021-Oct-11 08:21:34 339	150.461455	-23.364753	TRUE	1357	4.696671	16	Asphalt	0.1834	0.076	188	57	-2.8	-4.5
155	10545	Nine Mile Road~006400~5B~Pink Lily	2021-Oct-11 08:21:34 996	150.461445	-23.364838	TRUE	1366	4.305121	16	Asphalt	0.1636	0.0696	188	57	-2.5	-1.9
156	10545	Nine Mile Road~006400~5B~Pink Lily	2021-Oct-11 08:21:35 539	150.461433	-23.364922	TRUE	1375	5.920267	16	Asphalt	0.1972	0.096	188	57	-2.5	-0.9



Record_ID	Road_ID	Road_Name	Time_Stamp	Longitude	Latitude	Sealed	Chainage	IRI_Value	Altitude	Material	RoughoPeak	RoughoRMS	Heading	Speed	Pitch	Roll
157	10545	Nine Mile Road~006400~5B~Pink Lily	2021-Oct-11 08:21:36 196	150.461422	-23.365007	TRUE	1385	5.345177	16	Asphalt	0.2247	0.0866	188	57	-3.2	-3.8
158	10545	Nine Mile Road~006400~5B~Pink Lily	2021-Oct-11 08:21:36 632	150.46141	-23.365078	TRUE	1393	8.073795	16	Asphalt	0.3477	0.1312	188	57	-2.7	5.3
159	10545	Nine Mile Road~006400~5B~Pink Lily	2021-Oct-11 08:21:37 180	150.4614	-23.36515	TRUE	1401	7.14998	16	Asphalt	0.291	0.1161	188	57	-3.4	-2.7
160	10545	Nine Mile Road~006400~5B~Pink Lily	2021-Oct-11 08:21:37 727	150.461388	-23.365233	TRUE	1410	6.66666	17	Asphalt	0.2394	0.1082	188	57	-4	-2.9
161	10545	Nine Mile Road~006400~5B~Pink Lily	2021-Oct-11 08:21:38 273	150.461377	-23.365303	TRUE	1418	4.923036	17	Asphalt	0.1937	0.0797	188	57	-2.8	0.6
162	10545	Nine Mile Road~006400~5B~Pink Lily	2021-Oct-11 08:21:38 929	150.461362	-23.3654	TRUE	1429	4.119818	18	Asphalt	0.1732	0.0659	188	56	-2.7	-2.7
163	10545	Nine Mile Road~006400~5B~Pink Lily	2021-Oct-11 08:21:39 589	150.46135	-23.365483	TRUE	1439	3.915869	18	Asphalt	0.1834	0.0626	188	56	-2.6	-4.6
164	10545	Nine Mile Road~006400~5B~Pink Lily	2021-Oct-11 08:21:40 135	150.461338	-23.365572	TRUE	1449	4.329592	18	Asphalt	0.1748	0.07	188	57	-2	-4.3
165	10545	Nine Mile Road~006400~5B~Pink Lily	2021-Oct-11 08:21:40 789	150.461325	-23.365657	TRUE	1458	4.360182	17	Asphalt	0.1754	0.0705	187	57	-2.9	-1.7
166	10545	Nine Mile Road~006400~5B~Pink Lily	2021-Oct-11 08:21:41 339	150.461312	-23.365742	TRUE	1468	4.256177	17	Asphalt	0.1805	0.0688	188	57	-1.9	-3
167	10545	Nine Mile Road~006400~5B~Pink Lily	2021-Oct-11 08:21:41 885	150.461302	-23.365813	TRUE	1476	3.956396	17	Asphalt	0.1463	0.0639	188	57	-2.9	-4.7
168	10545	Nine Mile Road~006400~5B~Pink Lily	2021-Oct-11 08:21:42 541	150.461288	-23.365913	TRUE	1487	4.476424	17	Asphalt	0.1902	0.0724	187	57	-2.5	-1.1
169	10545	Nine Mile Road~006400~5B~Pink Lily	2021-Oct-11 08:21:43 085	150.461278	-23.365985	TRUE	1495	4.237823	17	Asphalt	0.187	0.0685	187	57	-2.7	-4.3
170	10545	Nine Mile Road~006400~5B~Pink Lily	2021-Oct-11 08:21:43 637	150.461265	-23.36607	TRUE	1504	4.060401	17	Asphalt	0.1566	0.0656	188	57	-2.3	3.1
171	10545	Nine Mile Road~006400~5B~Pink Lily	2021-Oct-11 08:21:44 183	150.461253	-23.366142	TRUE	1512	4.757851	17	Asphalt	0.1939	0.077	188	57	-2.5	-3.7
172	10545	Nine Mile Road~006400~5B~Pink Lily	2021-Oct-11 08:21:44 727	150.461238	-23.36623	TRUE	1522	6.132954	16	Asphalt	0.2287	0.1005	188	58	-3.2	3
173	10545	Nine Mile Road~006400~5B~Pink Lily	2021-Oct-11 08:21:45 278	150.461225	-23.366302	TRUE	1531	3.080897	15	Asphalt	0.1215	0.0501	188	58	-3	0
174	10545	Nine Mile Road~006400~5B~Pink Lily	2021-Oct-11 08:21:45 821	150.461212	-23.366373	TRUE	1539	4.225587	15	Asphalt	0.1627	0.0683	188	57	-2.1	-2.3
175	10545	Nine Mile Road~006400~5B~Pink Lily	2021-Oct-11 08:21:46 371	150.4612	-23.366457	TRUE	1548	5.137166	15	Asphalt	0.2147	0.0832	188	57	-3.4	2.7
176	10545	Nine Mile Road~006400~5B~Pink Lily	2021-Oct-11 08:21:47 029	150.461183	-23.366542	TRUE	1558	6.917497	15	Asphalt	0.2653	0.1123	189	57	-2.4	-1.4
177	10545	Nine Mile Road~006400~5B~Pink Lily	2021-Oct-11 08:21:47 571	150.46117	-23.366627	TRUE	1567	4.574312	15	Asphalt	0.1815	0.074	189	57	-3.5	2.2
178	10545	Nine Mile Road~006400~5B~Pink Lily	2021-Oct-11 08:21:48 121	150.461158	-23.366698	TRUE	1575	8.428052	15	Asphalt	0.2537	0.1384	188	58	-2.1	-5.8
179	10545	Nine Mile Road~006400~5B~Pink Lily	2021-Oct-11 08:21:48 667	150.461145	-23.366783	TRUE	1585	6.317935	14	Asphalt	0.256	0.1025	188	57	-3.9	-6.9
180	10545	Nine Mile Road~006400~5B~Pink Lily	2021-Oct-11 08:21:49 210	150.461133	-23.366855	TRUE	1593	7.682244	14	Asphalt	0.2885	0.1248	188	57	-2.5	-4.5
181	10545	Nine Mile Road~006400~5B~Pink Lily	2021-Oct-11 08:21:49 654	150.461123	-23.366927	TRUE	1601	13.611703	14	Asphalt	0.4354	0.224	188	58	0.2	-3.3
182	10545	Nine Mile Road~006400~5B~Pink Lily	2021-Oct-11 08:21:50 195	150.461112	-23.366998	TRUE	1609	10.967598	14	Asphalt	0.4222	0.1785	188	57	-4.6	-0.2
183	10545	Nine Mile Road~006400~5B~Pink Lily	2021-Oct-11 08:21:50 746	150.461098	-23.367083	TRUE	1618	5.742845	14	Asphalt	0.297	0.0931	188	57	-2.4	1.3
184	10545	Nine Mile Road~006400~5B~Pink Lily	2021-Oct-11 08:21:51 294	150.461085	-23.367153	TRUE	1626	4.323474	14	Asphalt	0.171	0.0699	188	57	-2.2	1.3
185	10545	Nine Mile Road~006400~5B~Pink Lily	2021-Oct-11 08:21:51 731	150.461072	-23.367225	TRUE	1635	5.406357	13	Asphalt	0.2007	0.0876	189	57	-3	3.7
186	10545	Nine Mile Road~006400~5B~Pink Lily	2021-Oct-11 08:21:52 387	150.461057	-23.367308	TRUE	1644	4.800677	13	Asphalt	0.2084	0.0777	189	57	-2.8	-2.1
187	10545	Nine Mile Road~006400~5B~Pink Lily	2021-Oct-11 08:21:52 930	150.46104	-23.367395	TRUE	1654	3.418014	13	Asphalt	0.159	0.0551	189	57	-1.8	-0.3
188	10545	Nine Mile Road~006400~5B~Pink Lily	2021-Oct-11 08:21:53 478	150.461028	-23.367467	TRUE	1662	4.128528	13	Asphalt	0.144	0.0674	189	58	-3.2	-2.6
189	10545	Nine Mile Road~006400~5B~Pink Lily	2021-Oct-11 08:21:54 030	150.461013	-23.367538	TRUE	1670	5.315438	13	Asphalt	0.2004	0.087	190	58	-2.5	-3.9
190	10545	Nine Mile Road~006400~5B~Pink Lily	2021-Oct-11 08:21:54 571	150.460997	-23.367623	TRUE	1680	4.01347	13	Asphalt	0.1492	0.0655	190	58	-3.2	2.8
191	10545	Nine Mile Road~006400~5B~Pink Lily	2021-Oct-11 08:21:55 227	150.460982	-23.367708	TRUE	1689	3.740965	13	Asphalt	0.1589	0.061	189	58	-2.5	0.5
192	10545	Nine Mile Road~006400~5B~Pink Lily	2021-Oct-11 08:21:55 778	150.460963	-23.367792	TRUE	1699	5.082104	14	Asphalt	0.1996	0.0823	190	57	-2.7	0.3
193	10545	Nine Mile Road~006400~5B~Pink Lily	2021-Oct-11 08:21:56 430	150.460945	-23.367873	TRUE	1708	4.507014	14	Asphalt	0.2091	0.0729	191	57	-2.9	-0.8
194	10545	Nine Mile Road~006400~5B~Pink Lily	2021-Oct-11 08:21:56 982	150.460927	-23.367958	TRUE	1718	3.191648	14	Asphalt	0.1209	0.0514	191	57	-2.4	-1.7
195	10545	Nine Mile Road~006400~5B~Pink Lily	2021-Oct-11 08:21:57 636	150.460902	-23.368057	TRUE	1729	4.586547	14	Asphalt	0.1904	0.0742	191	57	-3.2	-7.6
196	10545	Nine Mile Road~006400~5B~Pink Lily	2021-Oct-11 08:21:58 182	150.460885	-23.368127	TRUE	1737	5.956975	14	Asphalt	0.215	0.0966	192	57	-2.7	-6.6
197	10545	Nine Mile Road~006400~5B~Pink Lily	2021-Oct-11 08:21:58 727	150.460862	-23.368212	TRUE	1747	3.88298	14	Asphalt	0.1383	0.0627	192	57	-2.6	4.1
198	10545	Nine Mile Road~006400~5B~Pink Lily	2021-Oct-11 08:21:59 384	150.46084	-23.368295	TRUE	1756	5.657194	13	Asphalt	0.2045	0.0917	193	57	-3	-4.1
199	10545	Nine Mile Road~006400~5B~Pink Lily	2021-Oct-11 08:21:59 934	150.460815	-23.368377	TRUE	1766	5.265643	13	Asphalt	0.2249	0.0853	193	57	-2.9	-0.5
200	10545	Nine Mile Road~006400~5B~Pink Lily	2021-Oct-11 08:22:00 587	150.460792	-23.368458	TRUE	1776	4.531486	13	Asphalt	0.192	0.0733	194	57	-3	2
201	10545	Nine Mile Road~006400~5B~Pink Lily	2021-Oct-11 08:22:01 137	150.460768	-23.368542	TRUE	1785	4.268413	13	Asphalt	0.187	0.069	194	57	-2.1	-1.9
202	10545	Nine Mile Road~006400~5B~Pink Lily	2021-Oct-11 08:22:01 793	150.460742	-23.368623	TRUE	1795	3.94416	13	Asphalt	0.1787	0.0637	195	57	-2.8	2.5
203	10545	Nine Mile Road~006400~5B~Pink Lily	2021-Oct-11 08:22:02 336	150.460713	-23.368707	TRUE	1804	4.299003	13	Asphalt	0.161	0.0695	196	57	-2.9	-2.6
204	10545	Nine Mile Road~006400~5B~Pink Lily	2021-Oct-11 08:22:02 993	150.460685	-23.368788	TRUE	1814	3.772856	14	Asphalt	0.1406	0.0609	196	57	-2.6	-3.4
205	10545	Nine Mile Road~006400~5B~Pink Lily	2021-Oct-11 08:22:03 433	150.46066	-23.368858	TRUE	1822	4.794651	14	Asphalt	0.2506	0.0784	197	58	-2.6	-4.8
206	10545	Nine Mile Road~006400~5B~Pink Lily	2021-Oct-11 08:22:03 976	150.460637	-23.368927	TRUE	1830	4.540313	14	Asphalt	0.1548	0.0742	197	58	-2.1	0.2
207	10545	Nine Mile Road~006400~5B~Pink Lily	2021-Oct-11 08:22:04 636	150.460603	-23.369023	TRUE	1841	10.480922	13	Asphalt	0.4409	0.1723	197	58	-2.6	-2.9
208	10545	Nine Mile Road~006400~5B~Pink Lily	2021-Oct-11 08:22:05 293	150.460573	-23.369103	TRUE	1850	8.658166	13	Asphalt	0.281	0.1422	198	58	-4.3	-0.1

Record_ID	Road_ID	Road_Name	Time_Stamp	Longitude	Latitude	Sealed	Chainage	IRI_Value	Altitude	Material	RoughoPeak	RoughoRMS	Heading	Speed	Pitch	Roll
209	10545	Nine Mile Road~006400~5B~Pink Lily	2021-Oct-11 08:22:05 727	150.46055	-23.369172	TRUE	1858	7.198924	13	Asphalt	0.2385	0.1169	198	57	-2.8	2.1
210	10545	Nine Mile Road~006400~5B~Pink Lily	2021-Oct-11 08:22:06 279	150.460525	-23.369238	TRUE	1866	4.366301	13	Asphalt	0.2366	0.0706	198	57	-2.8	-0.3
211	10545	Nine Mile Road~006400~5B~Pink Lily	2021-Oct-11 08:22:06 822	150.4605	-23.369307	TRUE	1874	5.167755	13	Asphalt	0.2088	0.0837	198	57	-3.1	-3.6
212	10545	Nine Mile Road~006400~5B~Pink Lily	2021-Oct-11 08:22:07 371	150.46047	-23.369387	TRUE	1884	3.473076	13	Asphalt	0.1608	0.056	199	57	-2.6	-1.5
213	10545	Nine Mile Road~006400~5B~Pink Lily	2021-Oct-11 08:22:08 028	150.460438	-23.369465	TRUE	1893	3.766739	13	Asphalt	0.1699	0.0608	199	57	-2.3	-1.9
214	10545	Nine Mile Road~006400~5B~Pink Lily	2021-Oct-11 08:22:08 574	150.460407	-23.369545	TRUE	1902	2.628795	13	Asphalt	0.1062	0.0422	199	57	-2.1	-3
215	10545	Nine Mile Road~006400~5B~Pink Lily	2021-Oct-11 08:22:09 232	150.460372	-23.36964	TRUE	1913	3.968632	13	Asphalt	0.2033	0.0641	200	57	-2.7	0.2
216	10545	Nine Mile Road~006400~5B~Pink Lily	2021-Oct-11 08:22:09 882	150.460338	-23.36972	TRUE	1923	5.167755	13	Asphalt	0.1903	0.0837	200	57	-3.1	3.1
217	10545	Nine Mile Road~006400~5B~Pink Lily	2021-Oct-11 08:22:10 432	150.460303	-23.369802	TRUE	1933	5.036878	13	Asphalt	0.2036	0.0824	201	58	-2.4	-1.5
218	10545	Nine Mile Road~006400~5B~Pink Lily	2021-Oct-11 08:22:11 088	150.46027	-23.369882	TRUE	1942	5.866504	13	Asphalt	0.227	0.0961	202	58	-2.7	-1.6
219	10545	Nine Mile Road~006400~5B~Pink Lily	2021-Oct-11 08:22:11 632	150.460237	-23.369963	TRUE	1951	6.090564	13	Asphalt	0.24	0.0998	201	58	-4	-3.1
220	10545	Nine Mile Road~006400~5B~Pink Lily	2021-Oct-11 08:22:12 180	150.460207	-23.37003	TRUE	1959	10.329531	13	Asphalt	0.3328	0.1698	201	58	-1.2	-4.1
221	10545	Nine Mile Road~006400~5B~Pink Lily	2021-Oct-11 08:22:12 731	150.460173	-23.37011	TRUE	1969	6.205622	13	Asphalt	0.2118	0.1017	201	58	-3.8	-3.2
222	10545	Nine Mile Road~006400~5B~Pink Lily	2021-Oct-11 08:22:13 383	150.46014	-23.37019	TRUE	1979	5.709057	13	Asphalt	0.2363	0.0935	201	58	-2.7	-5.4
223	10545	Nine Mile Road~006400~5B~Pink Lily	2021-Oct-11 08:22:13 929	150.460107	-23.37027	TRUE	1988	8.906449	14	Asphalt	0.418	0.1463	201	58	-1.4	-5.7
224	10545	Nine Mile Road~006400~5B~Pink Lily	2021-Oct-11 08:22:14 483	150.460077	-23.370337	TRUE	1997	7.876986	14	Asphalt	0.2853	0.1293	201	58	-4.6	-4
225	10545	Nine Mile Road~006400~5B~Pink Lily	2021-Oct-11 08:22:15 029	150.46005	-23.370403	TRUE	2005	4.685649	14	Asphalt	0.2173	0.0766	201	58	-1.7	-0.5
226	10545	Nine Mile Road~006400~5B~Pink Lily	2021-Oct-11 08:22:15 463	150.460022	-23.37047	TRUE	2013	4.001359	14	Asphalt	0.2075	0.0653	201	58	-2.3	-1.9
227	10545	Nine Mile Road~006400~5B~Pink Lily	2021-Oct-11 08:22:16 008	150.459993	-23.37054	TRUE	2021	4.467645	14	Asphalt	0.2107	0.073	201	58	-2.2	1.4
228	10545	Nine Mile Road~006400~5B~Pink Lily	2021-Oct-11 08:22:16 558	150.45996	-23.370618	TRUE	2030	6.447848	14	Asphalt	0.3083	0.1057	201	58	-2.9	3.4
229	10545	Nine Mile Road~006400~5B~Pink Lily	2021-Oct-11 08:22:17 107	150.45993	-23.370685	TRUE	2038	5.388107	14	Asphalt	0.2621	0.0882	201	58	-2.5	0.7
230	10545	Nine Mile Road~006400~5B~Pink Lily	2021-Oct-11 08:22:17 649	150.459893	-23.370767	TRUE	2048	4.946043	14	Asphalt	0.1878	0.0809	201	58	-3.5	-5.6
231	10545	Nine Mile Road~006400~5B~Pink Lily	2021-Oct-11 08:22:18 198	150.459863	-23.370833	TRUE	2056	4.476424	14	Asphalt	0.1944	0.0724	202	57	-2.4	2.5
232	10545	Nine Mile Road~006400~5B~Pink Lily	2021-Oct-11 08:22:18 633	150.459835	-23.370902	TRUE	2065	6.720353	13	Asphalt	0.2255	0.1102	202	58	-3.4	-0.3
233	10545	Nine Mile Road~006400~5B~Pink Lily	2021-Oct-11 08:22:19 183	150.459808	-23.370968	TRUE	2073	6.703368	13	Asphalt	0.2495	0.1088	201	57	-2.2	-1.2
234	10545	Nine Mile Road~006400~5B~Pink Lily	2021-Oct-11 08:22:19 727	150.459775	-23.371047	TRUE	2082	4.201115	14	Asphalt	0.2374	0.0679	201	57	-2.7	-5.4
235	10545	Nine Mile Road~006400~5B~Pink Lily	2021-Oct-11 08:22:20 278	150.459745	-23.371112	TRUE	2090	5.045396	14	Asphalt	0.233	0.0817	202	57	-2.5	0.9
236	10545	Nine Mile Road~006400~5B~Pink Lily	2021-Oct-11 08:22:20 824	150.459718	-23.37118	TRUE	2099	6.938357	14	Asphalt	0.2758	0.1138	201	58	-2.2	-5
237	10545	Nine Mile Road~006400~5B~Pink Lily	2021-Oct-11 08:22:21 261	150.459688	-23.371247	TRUE	2107	6.344902	14	Asphalt	0.2701	0.104	202	58	-3.2	-0.1
238	10545	Nine Mile Road~006400~5B~Pink Lily	2021-Oct-11 08:22:21 809	150.45966	-23.371315	TRUE	2115	4.080082	14	Asphalt	0.1639	0.0666	201	58	-2.3	-6.7
239	10545	Nine Mile Road~006400~5B~Pink Lily	2021-Oct-11 08:22:22 352	150.459625	-23.371393	TRUE	2124	4.612981	14	Asphalt	0.2263	0.0754	202	58	-3.3	2.6
240	10545	Nine Mile Road~006400~5B~Pink Lily	2021-Oct-11 08:22:23 007	150.459592	-23.371473	TRUE	2134	4.37681	14	Asphalt	0.2116	0.0715	202	58	-2.3	0
241	10545	Nine Mile Road~006400~5B~Pink Lily	2021-Oct-11 08:22:23 446	150.459563	-23.37154	TRUE	2142	8.73689	14	Asphalt	0.3038	0.1435	202	58	-4.3	-1.4
242	10545	Nine Mile Road~006400~5B~Pink Lily	2021-Oct-11 08:22:24 101	150.45953	-23.371618	TRUE	2151	10.141672	14	Asphalt	0.3334	0.165	202	57	-2.5	-3.1
243	10545	Nine Mile Road~006400~5B~Pink Lily	2021-Oct-11 08:22:24 538	150.4595	-23.371685	TRUE	2159	4.727261	14	Asphalt	0.1612	0.0765	202	57	-3	-4.4
244	10545	Nine Mile Road~006400~5B~Pink Lily	2021-Oct-11 08:22:25 196	150.459468	-23.371763	TRUE	2169	4.121581	14	Asphalt	0.169	0.0666	202	57	-3	-2
245	10545	Nine Mile Road~006400~5B~Pink Lily	2021-Oct-11 08:22:25 635	150.45944	-23.37183	TRUE	2177	5.210581	14	Asphalt	0.2592	0.0844	202	57	-1.4	-4.7
246	10545	Nine Mile Road~006400~5B~Pink Lily	2021-Oct-11 08:22:26 184	150.45941	-23.371898	TRUE	2185	7.846708	13	Asphalt	0.2668	0.1288	202	58	-3.7	-7.5
247	10545	Nine Mile Road~006400~5B~Pink Lily	2021-Oct-11 08:22:26 728	150.459378	-23.371982	TRUE	2195	6.441793	13	Asphalt	0.2557	0.1056	201	58	-3.5	0.4
248	10545	Nine Mile Road~006400~5B~Pink Lily	2021-Oct-11 08:22:27 383	150.459345	-23.372062	TRUE	2205	4.425256	13	Asphalt	0.1543	0.0723	201	58	-2.4	0.9
249	10545	Nine Mile Road~006400~5B~Pink Lily	2021-Oct-11 08:22:27 929	150.45931	-23.372143	TRUE	2215	4.806762	13	Asphalt	0.2151	0.0786	201	58	-2.7	-0.9
250	10545	Nine Mile Road~006400~5B~Pink Lily	2021-Oct-11 08:22:28 588	150.459277	-23.372222	TRUE	2224	7.398588	13	Asphalt	0.2516	0.1214	202	58	-3.2	-0.9
251	10545	Nine Mile Road~006400~5B~Pink Lily	2021-Oct-11 08:22:29 133	150.459242	-23.3723	TRUE	2233	8.69171	13	Asphalt	0.2801	0.1413	202	57	-3.7	-7.6
252	10545	Nine Mile Road~006400~5B~Pink Lily	2021-Oct-11 08:22:29 679	150.45921	-23.372367	TRUE	2241	6.629518	13	Asphalt	0.2273	0.1087	202	58	-2.7	-1.7
253	10545	Nine Mile Road~006400~5B~Pink Lily	2021-Oct-11 08:22:30 232	150.459175	-23.372445	TRUE	2251	5.277879	13	Asphalt	0.2312	0.0855	202	57	-2.4	-1.8
254	10545	Nine Mile Road~006400~5B~Pink Lily	2021-Oct-11 08:22:30 883	150.459138	-23.372525	TRUE	2261	5.4553	13	Asphalt	0.2211	0.0884	202	57	-3.3	0.3
255	10545	Nine Mile Road~006400~5B~Pink Lily	2021-Oct-11 08:22:31 434	150.459103	-23.372605	TRUE	2270	5.314587	13	Asphalt	0.206	0.0861	202	57	-2.9	4.3
256	10545	Nine Mile Road~006400~5B~Pink Lily	2021-Oct-11 08:22:31 981	150.459073	-23.372672	TRUE	2278	5.461418	13	Asphalt	0.2201	0.0885	202	57	-2.5	0.8
257	10545	Nine Mile Road~006400~5B~Pink Lily	2021-Oct-11 08:22:32 524	150.459047	-23.372738	TRUE	2287	3.956396	13	Asphalt	0.1739	0.0639	202	57	-2.6	0.2
258	10545	Nine Mile Road~006400~5B~Pink Lily	2021-Oct-11 08:22:32 964	150.459017	-23.372805	TRUE	2295	5.100458	13	Asphalt	0.1939	0.0826	202	57	-2.6	-4.5
259	10545	Nine Mile Road~006400~5B~Pink Lily	2021-Oct-11 08:22:33 617	150.458982	-23.372883	TRUE	2304	5.498126	13	Asphalt	0.1989	0.0891	202	57	-3.2	4.1
260	10545	Nine Mile Road~006400~5B~Pink Lily	2021-Oct-11 08:22:34 058	150.458953	-23.37295	TRUE	2312	5.779553	13	Asphalt	0.2059	0.0937	202	57	-1.9	-6.1

Record_ID	Road_ID	Road_Name	Time_Stamp	Longitude	Latitude	Sealed	Chainage	IRI_Value	Altitude	Material	RoughoPeak	RoughoRMS	Heading	Speed	Pitch	Roll
261	10545	Nine Mile Road~006400~5B~Pink Lily	2021-Oct-11 08:22:34 710	150.458918	-23.37303	TRUE	2322	6.593244	12	Asphalt	0.2644	0.107	202	57	-1.8	0.9
262	10545	Nine Mile Road~006400~5B~Pink Lily	2021-Oct-11 08:22:35 261	150.458885	-23.37311	TRUE	2331	9.260683	12	Asphalt	0.3665	0.1506	201	57	-3.1	-1.4
263	10545	Nine Mile Road~006400~5B~Pink Lily	2021-Oct-11 08:22:35 917	150.458852	-23.373188	TRUE	2341	7.143862	12	Asphalt	0.2912	0.116	201	57	-1.1	3
264	10545	Nine Mile Road~006400~5B~Pink Lily	2021-Oct-11 08:22:36 462	150.458818	-23.373268	TRUE	2350	11.640576	13	Asphalt	0.3498	0.1895	202	57	-2.4	0.2
265	10545	Nine Mile Road~006400~5B~Pink Lily	2021-Oct-11 08:22:37 117	150.458785	-23.373348	TRUE	2359	6.72784	13	Asphalt	0.2876	0.1092	201	57	-2.4	-0.1
266	10545	Nine Mile Road~006400~5B~Pink Lily	2021-Oct-11 08:22:37 668	150.458752	-23.373427	TRUE	2369	5.351295	13	Asphalt	0.2212	0.0867	201	57	-0.4	0.8
267	10545	Nine Mile Road~006400~5B~Pink Lily	2021-Oct-11 08:22:38 211	150.458723	-23.373493	TRUE	2377	8.128857	14	Asphalt	0.3221	0.1321	201	57	-1.6	5.2
268	10545	Nine Mile Road~006400~5B~Pink Lily	2021-Oct-11 08:22:38 654	150.458693	-23.37356	TRUE	2385	6.03039	14	Asphalt	0.2755	0.0978	202	57	-1.8	2
269	10545	Nine Mile Road~006400~5B~Pink Lily	2021-Oct-11 08:22:39 195	150.458665	-23.373627	TRUE	2393	4.880211	14	Asphalt	0.1845	0.079	202	57	-0.6	-0.3
270	10545	Nine Mile Road~006400~5B~Pink Lily	2021-Oct-11 08:22:39 635	150.458638	-23.373695	TRUE	2401	5.822379	14	Asphalt	0.3066	0.0944	201	57	-1.4	0.4
271	10545	Nine Mile Road~006400~5B~Pink Lily	2021-Oct-11 08:22:40 291	150.458602	-23.373775	TRUE	2411	10.667818	15	Asphalt	0.3674	0.1736	202	57	-2.9	4.2
272	10545	Nine Mile Road~006400~5B~Pink Lily	2021-Oct-11 08:22:40 839	150.458567	-23.373855	TRUE	2420	5.088222	15	Asphalt	0.2374	0.0824	202	57	-2.3	-3.3
273	10545	Nine Mile Road~006400~5B~Pink Lily	2021-Oct-11 08:22:41 386	150.458538	-23.373923	TRUE	2429	6.684019	15	Asphalt	0.3101	0.1096	202	58	-3	-2.4
274	10545	Nine Mile Road~006400~5B~Pink Lily	2021-Oct-11 08:22:41 930	150.458503	-23.374003	TRUE	2438	7.531813	15	Asphalt	0.2598	0.1236	202	58	-3.1	-2.4
275	10545	Nine Mile Road~006400~5B~Pink Lily	2021-Oct-11 08:22:42 588	150.458465	-23.374085	TRUE	2448	5.321494	15	Asphalt	0.1811	0.0871	202	58	-2.5	-2.5
276	10545	Nine Mile Road~006400~5B~Pink Lily	2021-Oct-11 08:22:43 136	150.45843	-23.374165	TRUE	2458	4.207233	14	Asphalt	0.1709	0.068	202	57	-2.6	-1.5
277	10545	Nine Mile Road~006400~5B~Pink Lily	2021-Oct-11 08:22:43 680	150.458402	-23.374232	TRUE	2466	4.818874	14	Asphalt	0.2077	0.0788	202	58	-2.5	1.5
278	10545	Nine Mile Road~006400~5B~Pink Lily	2021-Oct-11 08:22:44 226	150.458373	-23.3743	TRUE	2474	5.024766	14	Asphalt	0.2072	0.0822	202	58	-3.2	-5.5
279	10545	Nine Mile Road~006400~5B~Pink Lily	2021-Oct-11 08:22:44 774	150.458338	-23.374378	TRUE	2484	6.507593	14	Asphalt	0.239	0.1056	202	57	-3.3	-1.9
280	10545	Nine Mile Road~006400~5B~Pink Lily	2021-Oct-11 08:22:45 320	150.45831	-23.374445	TRUE	2492	6.750631	14	Asphalt	0.2511	0.1107	202	58	-3	-2.1
281	10545	Nine Mile Road~006400~5B~Pink Lily	2021-Oct-11 08:22:45 763	150.458282	-23.374515	TRUE	2500	5.824114	14	Asphalt	0.2415	0.0954	202	58	-3.6	-5.2
282	10545	Nine Mile Road~006400~5B~Pink Lily	2021-Oct-11 08:22:46 308	150.458255	-23.374583	TRUE	2508	3.486627	14	Asphalt	0.1388	0.0568	201	58	-3.5	3
283	10545	Nine Mile Road~006400~5B~Pink Lily	2021-Oct-11 08:22:46 852	150.458222	-23.374663	TRUE	2518	4.025581	14	Asphalt	0.1328	0.0657	201	58	-2.5	-2.2
284	10545	Nine Mile Road~006400~5B~Pink Lily	2021-Oct-11 08:22:47 403	150.458193	-23.374732	TRUE	2526	4.528202	14	Asphalt	0.1718	0.074	201	58	-3.6	0.2
285	10545	Nine Mile Road~006400~5B~Pink Lily	2021-Oct-11 08:22:47 835	150.458167	-23.3748	TRUE	2534	4.146695	14	Asphalt	0.1645	0.0677	201	58	-3.4	2.5
286	10545	Nine Mile Road~006400~5B~Pink Lily	2021-Oct-11 08:22:48 492	150.458133	-23.374882	TRUE	2543	8.203992	14	Asphalt	0.2709	0.1347	201	58	-3.6	-4.4
287	10545	Nine Mile Road~006400~5B~Pink Lily	2021-Oct-11 08:22:49 042	150.458102	-23.374963	TRUE	2553	6.623462	14	Asphalt	0.3309	0.1086	200	58	-5.6	-1.2
288	10545	Nine Mile Road~006400~5B~Pink Lily	2021-Oct-11 08:22:49 697	150.458072	-23.375045	TRUE	2562	11.038044	13	Asphalt	0.3399	0.1815	200	58	-3.1	-6.2
289	10545	Nine Mile Road~006400~5B~Pink Lily	2021-Oct-11 08:22:50 243	150.458045	-23.375127	TRUE	2572	7.719538	13	Asphalt	0.3096	0.1267	198	58	-5.3	2.1
290	10545	Nine Mile Road~006400~5B~Pink Lily	2021-Oct-11 08:22:50 904	150.458023	-23.37521	TRUE	2581	4.976321	13	Asphalt	0.1902	0.0814	197	58	-3.3	-2.1
291	10545	Nine Mile Road~006400~5B~Pink Lily	2021-Oct-11 08:22:51 449	150.458007	-23.375295	TRUE	2591	4.098249	12	Asphalt	0.1472	0.0669	195	58	-2.7	-5.6
292	10545	Nine Mile Road~006400~5B~Pink Lily	2021-Oct-11 08:22:52 108	150.457993	-23.375378	TRUE	2600	4.491868	12	Asphalt	0.184	0.0734	192	58	-3.1	3.8
293	10545	Nine Mile Road~006400~5B~Pink Lily	2021-Oct-11 08:22:52 539	150.457987	-23.37545	TRUE	2608	4.346532	12	Asphalt	0.1582	0.071	190	58	-3.4	0.1
294	10545	Nine Mile Road~006400~5B~Pink Lily	2021-Oct-11 08:22:53 086	150.457983	-23.375522	TRUE	2616	4.170917	12	Asphalt	0.1955	0.0681	188	58	-2.6	-0.6
295	10545	Nine Mile Road~006400~5B~Pink Lily	2021-Oct-11 08:22:53 636	150.457983	-23.375608	TRUE	2626	5.290115	11	Asphalt	0.1708	0.0857	185	57	-2.8	-1.3
296	10545	Nine Mile Road~006400~5B~Pink Lily	2021-Oct-11 08:22:54 184	150.457988	-23.37568	TRUE	2634	5.663311	11	Asphalt	0.2019	0.0918	182	57	-4.1	2.9
297	10545	Nine Mile Road~006400~5B~Pink Lily	2021-Oct-11 08:22:54 728	150.457995	-23.375763	TRUE	2643	6.893025	11	Asphalt	0.2467	0.1119	180	57	-3.2	-1.2
298	10545	Nine Mile Road~006400~5B~Pink Lily	2021-Oct-11 08:22:55 383	150.45801	-23.375848	TRUE	2653	5.924462	11	Asphalt	0.2055	0.0951	177	56	-2.4	-1.2
299	10545	Nine Mile Road~006400~5B~Pink Lily	2021-Oct-11 08:22:55 933	150.458032	-23.375933	TRUE	2662	4.58952	11	Asphalt	0.166	0.0735	173	56	-3.2	2.5
300	10545	Nine Mile Road~006400~5B~Pink Lily	2021-Oct-11 08:22:56 589	150.458057	-23.376015	TRUE	2672	5.034501	11	Asphalt	0.2269	0.0807	170	56	-1.8	-3.2
301	10545	Nine Mile Road~006400~5B~Pink Lily	2021-Oct-11 08:22:57 138	150.458083	-23.376095	TRUE	2681	6.795883	11	Asphalt	0.299	0.1092	167	56	-2.1	-6.5
302	10545	Nine Mile Road~006400~5B~Pink Lily	2021-Oct-11 08:22:57 790	150.458118	-23.376173	TRUE	2691	10.201222	11	Asphalt	0.4944	0.1643	164	56	-5	-0.6
303	10545	Nine Mile Road~006400~5B~Pink Lily	2021-Oct-11 08:22:58 338	150.458158	-23.376252	TRUE	2700	15.152296	11	Asphalt	0.6298	0.2469	161	57	-6.6	-1.4
304	10545	Nine Mile Road~006400~5B~Pink Lily	2021-Oct-11 08:22:58 996	150.458202	-23.376328	TRUE	2710	13.121126	12	Asphalt	0.4367	0.2137	158	57	-2.5	-4.6
305	10545	Nine Mile Road~006400~5B~Pink Lily	2021-Oct-11 08:22:59 539	150.458245	-23.376407	TRUE	2720	7.351874	12	Asphalt	0.3662	0.1194	156	57	-3.4	-1.3
306	10545	Nine Mile Road~006400~5B~Pink Lily	2021-Oct-11 08:23:00 195	150.458288	-23.376483	TRUE	2729	4.115463	11	Asphalt	0.1691	0.0665	155	57	-2.5	-0.3
307	10545	Nine Mile Road~006400~5B~Pink Lily	2021-Oct-11 08:23:00 635	150.458325	-23.376547	TRUE	2737	4.782323	12	Asphalt	0.1924	0.0774	154	57	-2.3	-2.2
308	10545	Nine Mile Road~006400~5B~Pink Lily	2021-Oct-11 08:23:01 293	150.45837	-23.376623	TRUE	2747	3.868134	12	Asphalt	0.1626	0.0631	154	58	-2.6	0.7
309	10545	Nine Mile Road~006400~5B~Pink Lily	2021-Oct-11 08:23:01 835	150.458415	-23.376698	TRUE	2756	4.843503	12	Asphalt	0.2147	0.0784	153	57	-2.7	-3.5
310	10545	Nine Mile Road~006400~5B~Pink Lily	2021-Oct-11 08:23:02 496	150.458458	-23.376773	TRUE	2765	4.37681	12	Asphalt	0.2284	0.0715	153	58	-2.5	0.2
311	10545	Nine Mile Road~006400~5B~Pink Lily	2021-Oct-11 08:23:03 040	150.458505	-23.37685	TRUE	2775	5.478941	12	Asphalt	0.2116	0.0897	153	58	-2.8	7.5
312	10545	Nine Mile Road~006400~5B~Pink Lily	2021-Oct-11 08:23:03 695	150.458552	-23.376927	TRUE	2784	5.212492	13	Asphalt	0.2167	0.0853	152	58	-2.7	-1.4

Record_ID	Road_ID	Road_Name	Time_Stamp	Longitude	Latitude	Sealed	Chainage	IRI_Value	Altitude	Material	RoughoPeak	RoughoRMS	Heading	Speed	Pitch	Roll
313	10545	Nine Mile Road~006400~5B~Pink Lily	2021-Oct-11 08:23:04 245	150.458598	-23.377003	TRUE	2794	6.05423	13	Asphalt	0.272	0.0992	152	58	-3.1	4.8
314	10545	Nine Mile Road~006400~5B~Pink Lily	2021-Oct-11 08:23:04 899	150.458643	-23.377078	TRUE	2803	6.714298	13	Asphalt	0.3303	0.1101	152	58	-3.6	4.9
315	10545	Nine Mile Road~006400~5B~Pink Lily	2021-Oct-11 08:23:05 447	150.45869	-23.377155	TRUE	2813	6.605296	13	Asphalt	0.2645	0.1083	152	58	-2.2	2.1
316	10545	Nine Mile Road~006400~5B~Pink Lily	2021-Oct-11 08:23:06 102	150.458733	-23.377232	TRUE	2822	5.273049	13	Asphalt	0.2693	0.0863	152	58	-3.7	-0.8
317	10545	Nine Mile Road~006400~5B~Pink Lily	2021-Oct-11 08:23:06 654	150.458778	-23.37731	TRUE	2832	7.568147	12	Asphalt	0.2767	0.1242	153	58	-2.6	-2.8
318	10545	Nine Mile Road~006400~5B~Pink Lily	2021-Oct-11 08:23:07 195	150.458813	-23.377373	TRUE	2840	8.004155	12	Asphalt	0.2931	0.1314	153	58	-3.7	1.3
319	10545	Nine Mile Road~006400~5B~Pink Lily	2021-Oct-11 08:23:07 744	150.458858	-23.377448	TRUE	2849	8.294826	12	Asphalt	0.4252	0.1362	152	58	-3.7	2.7
320	10545	Nine Mile Road~006400~5B~Pink Lily	2021-Oct-11 08:23:08 403	150.458903	-23.377523	TRUE	2859	6.702186	12	Asphalt	0.2443	0.1099	152	58	-4	-1.8
321	10545	Nine Mile Road~006400~5B~Pink Lily	2021-Oct-11 08:23:08 947	150.458948	-23.3776	TRUE	2868	4.837385	11	Asphalt	0.1781	0.0783	152	57	-2.2	0.2
322	10545	Nine Mile Road~006400~5B~Pink Lily	2021-Oct-11 08:23:09 602	150.458993	-23.377673	TRUE	2877	5.730609	11	Asphalt	0.1879	0.0929	152	57	-2.6	-1.8
323	10545	Nine Mile Road~006400~5B~Pink Lily	2021-Oct-11 08:23:10 154	150.459037	-23.37775	TRUE	2887	7.822958	11	Asphalt	0.252	0.1271	152	57	-3.8	-3
324	10545	Nine Mile Road~006400~5B~Pink Lily	2021-Oct-11 08:23:10 700	150.459073	-23.377813	TRUE	2895	11.089958	10	Asphalt	0.3617	0.1805	152	57	-2.8	0.7
325	10545	Nine Mile Road~006400~5B~Pink Lily	2021-Oct-11 08:23:11 243	150.459117	-23.37789	TRUE	2904	6.825727	10	Asphalt	0.2922	0.1108	152	57	-3	1.8
326	10545	Nine Mile Road~006400~5B~Pink Lily	2021-Oct-11 08:23:11 903	150.45916	-23.377965	TRUE	2914	4.451952	10	Asphalt	0.1822	0.072	152	57	-3.1	-2.5
327	10545	Nine Mile Road~006400~5B~Pink Lily	2021-Oct-11 08:23:12 445	150.459205	-23.378042	TRUE	2923	3.999222	10	Asphalt	0.1988	0.0646	152	57	-3.1	-0.1
328	10545	Nine Mile Road~006400~5B~Pink Lily	2021-Oct-11 08:23:12 996	150.459242	-23.378105	TRUE	2931	3.956396	10	Asphalt	0.177	0.0639	152	57	-3.4	-4
329	10545	Nine Mile Road~006400~5B~Pink Lily	2021-Oct-11 08:23:13 542	150.459287	-23.378178	TRUE	2940	4.262294	10	Asphalt	0.2033	0.0689	152	57	-2.7	1.2
330	10545	Nine Mile Road~006400~5B~Pink Lily	2021-Oct-11 08:23:14 197	150.459328	-23.378255	TRUE	2950	8.477581	10	Asphalt	0.299	0.1378	152	57	-4.6	-0.8
331	10545	Nine Mile Road~006400~5B~Pink Lily	2021-Oct-11 08:23:14 741	150.459372	-23.378332	TRUE	2959	7.853548	10	Asphalt	0.3184	0.1276	152	57	-2.9	-3.4
332	10545	Nine Mile Road~006400~5B~Pink Lily	2021-Oct-11 08:23:15 404	150.459413	-23.378407	TRUE	2969	13.751279	10	Asphalt	0.5864	0.224	153	57	-3.9	1.5
333	10545	Nine Mile Road~006400~5B~Pink Lily	2021-Oct-11 08:23:15 838	150.45945	-23.37847	TRUE	2977	10.814649	10	Asphalt	0.4194	0.176	152	57	-3.8	-4.6
334	10545	Nine Mile Road~006400~5B~Pink Lily	2021-Oct-11 08:23:16 497	150.459497	-23.378547	TRUE	2986	8.306278	10	Asphalt	0.3679	0.135	152	57	-4.6	3.3
335	10545	Nine Mile Road~006400~5B~Pink Lily	2021-Oct-11 08:23:17 038	150.459542	-23.378623	TRUE	2996	5.883559	10	Asphalt	0.199	0.0954	152	57	-3	-2.4
336	10545	Nine Mile Road~006400~5B~Pink Lily	2021-Oct-11 08:23:17 697	150.459587	-23.378698	TRUE	3005	5.9998	10	Asphalt	0.2197	0.0973	152	57	-3.4	-0.8
337	10545	Nine Mile Road~006400~5B~Pink Lily	2021-Oct-11 08:23:18 242	150.45963	-23.37877	TRUE	3014	4.626602	10	Asphalt	0.1524	0.0741	152	56	-2.2	-3.1
338	10545	Nine Mile Road~006400~5B~Pink Lily	2021-Oct-11 08:23:18 791	150.459665	-23.378833	TRUE	3022	3.069169	9	Asphalt	0.1374	0.0489	152	56	-3	-2.7
339	10545	Nine Mile Road~006400~5B~Pink Lily	2021-Oct-11 08:23:19 337	150.459712	-23.378908	TRUE	3032	4.954157	9	Asphalt	0.2323	0.0794	152	56	-2.8	2.1
340	10545	Nine Mile Road~006400~5B~Pink Lily	2021-Oct-11 08:23:19 996	150.459755	-23.378985	TRUE	3041	6.233477	9	Asphalt	0.2892	0.1001	152	56	-2.6	-0.5
341	10545	Nine Mile Road~006400~5B~Pink Lily	2021-Oct-11 08:23:20 542	150.459795	-23.379062	TRUE	3050	6.611598	10	Asphalt	0.2671	0.1073	152	57	-2.7	3.5
342	10545	Nine Mile Road~006400~5B~Pink Lily	2021-Oct-11 08:23:21 087	150.45983	-23.379127	TRUE	3059	5.742845	10	Asphalt	0.23	0.0931	153	57	-2.4	-0.4
343	10545	Nine Mile Road~006400~5B~Pink Lily	2021-Oct-11 08:23:21 637	150.459868	-23.379203	TRUE	3068	6.391351	10	Asphalt	0.2815	0.1037	153	57	-2	-5.4
344	10545	Nine Mile Road~006400~5B~Pink Lily	2021-Oct-11 08:23:22 182	150.4599	-23.37927	TRUE	3076	4.629373	10	Asphalt	0.1919	0.0749	154	57	-2.8	-1.9
345	10545	Nine Mile Road~006400~5B~Pink Lily	2021-Oct-11 08:23:22 729	150.459935	-23.379348	TRUE	3086	6.715604	10	Asphalt	0.2446	0.109	156	57	-2.7	4
346	10545	Nine Mile Road~006400~5B~Pink Lily	2021-Oct-11 08:23:23 278	150.459962	-23.379417	TRUE	3094	4.598783	10	Asphalt	0.1538	0.0744	157	57	-2.4	3.2
347	10545	Nine Mile Road~006400~5B~Pink Lily	2021-Oct-11 08:23:23 819	150.459988	-23.379487	TRUE	3102	7.120027	11	Asphalt	0.2623	0.1168	158	58	-4	-4.9
348	10545	Nine Mile Road~006400~5B~Pink Lily	2021-Oct-11 08:23:24 261	150.46001	-23.379557	TRUE	3110	5.660611	11	Asphalt	0.2398	0.0927	160	58	-2.4	4
349	10545	Nine Mile Road~006400~5B~Pink Lily	2021-Oct-11 08:23:24 918	150.460033	-23.37964	TRUE	3120	7.247196	11	Asphalt	0.2724	0.1189	162	58	-2.6	3.5
350	10545	Nine Mile Road~006400~5B~Pink Lily	2021-Oct-11 08:23:25 461	150.460057	-23.379725	TRUE	3129	6.756687	11	Asphalt	0.2407	0.1108	164	58	-4.4	-5.7
351	10545	Nine Mile Road~006400~5B~Pink Lily	2021-Oct-11 08:23:26 121	150.460078	-23.379808	TRUE	3139	5.042934	11	Asphalt	0.2198	0.0825	164	58	-2.4	2.8
352	10545	Nine Mile Road~006400~5B~Pink Lily	2021-Oct-11 08:23:26 667	150.460098	-23.379893	TRUE	3149	5.133768	11	Asphalt	0.2361	0.084	165	58	-2.7	-5.2
353	10545	Nine Mile Road~006400~5B~Pink Lily	2021-Oct-11 08:23:27 323	150.460113	-23.379975	TRUE	3158	15.270955	12	Asphalt	0.5644	0.2514	167	58	-5.5	-4.4
354	10545	Nine Mile Road~006400~5B~Pink Lily	2021-Oct-11 08:23:27 867	150.460128	-23.380057	TRUE	3167	7.75566	12	Asphalt	0.252	0.126	167	57	-3.4	4.6
355	10545	Nine Mile Road~006400~5B~Pink Lily	2021-Oct-11 08:23:28 529	150.460147	-23.38014	TRUE	3176	12.698986	13	Asphalt	0.4922	0.2068	168	57	-2.7	-7.3
356	10545	Nine Mile Road~006400~5B~Pink Lily	2021-Oct-11 08:23:28 960	150.460163	-23.380212	TRUE	3185	15.488959	13	Asphalt	0.486	0.255	168	58	-6.3	6.1
357	10545	Nine Mile Road~006400~5B~Pink Lily	2021-Oct-11 08:23:29 618	150.460182	-23.380295	TRUE	3194	26.525616	14	Asphalt	1.0252	0.4328	168	57	-10.6	0.5
358	10545	Nine Mile Road~006400~5B~Pink Lily	2021-Oct-11 08:23:30 167	150.460198	-23.380377	TRUE	3204	11.9893	14	Asphalt	0.5329	0.1952	168	57	-5.5	1.7
359	10545	Nine Mile Road~006400~5B~Pink Lily	2021-Oct-11 08:23:30 822	150.46021	-23.380462	TRUE	3213	8.960901	14	Asphalt	0.2731	0.1457	169	57	-3.1	0.4
360	10545	Nine Mile Road~006400~5B~Pink Lily	2021-Oct-11 08:23:31 262	150.460222	-23.380533	TRUE	3221	6.776784	14	Asphalt	0.293	0.11	170	57	-2.6	-0.7
361	10545	Nine Mile Road~006400~5B~Pink Lily	2021-Oct-11 08:23:31 808	150.46023	-23.380605	TRUE	3230	3.91357	14	Asphalt	0.1635	0.0632	170	57	-2.5	3.8
362	10545	Nine Mile Road~006400~5B~Pink Lily	2021-Oct-11 08:23:32 245	150.460238	-23.380678	TRUE	3238	5.082104	14	Asphalt	0.1884	0.0823	172	57	-3	-3.6
363	10545	Nine Mile Road~006400~5B~Pink Lily	2021-Oct-11 08:23:32 789	150.460243	-23.38075	TRUE	3246	6.09157	14	Asphalt	0.2729	0.0988	173	57	-3.5	-5.5
364	10545	Nine Mile Road~006400~5B~Pink Lily	2021-Oct-11 08:23:33 233	150.460248	-23.380823	TRUE	3254	6.411514	14	Asphalt	0.3153	0.1051	174	58	-2.9	-3

Record_ID	Road_ID	Road_Name	Time_Stamp	Longitude	Latitude	Sealed	Chainage	IRI_Value	Altitude	Material	RoughoPeak	RoughoRMS	Heading	Speed	Pitch	Roll
365	10545	Nine Mile Road~006400~5B~Pink Lily	2021-Oct-11 08:23:33 773	150.46025	-23.380897	TRUE	3262	2.959784	13	Asphalt	0.1646	0.0481	175	58	-2.5	1.1
366	10545	Nine Mile Road~006400~5B~Pink Lily	2021-Oct-11 08:23:34 326	150.460248	-23.380982	TRUE	3271	2.67162	13	Asphalt	0.1008	0.0429	176	57	-1.9	1.7
367	10545	Nine Mile Road~006400~5B~Pink Lily	2021-Oct-11 08:23:34 871	150.460245	-23.381053	TRUE	3279	7.131626	12	Asphalt	0.2906	0.1158	178	57	-3.1	-6.5
368	10545	Nine Mile Road~006400~5B~Pink Lily	2021-Oct-11 08:23:35 414	150.46024	-23.381127	TRUE	3287	3.332362	12	Asphalt	0.1306	0.0537	180	57	-2.2	0.4
369	10545	Nine Mile Road~006400~5B~Pink Lily	2021-Oct-11 08:23:35 851	150.460233	-23.381198	TRUE	3295	2.910222	12	Asphalt	0.1286	0.0468	181	57	-2.7	-1.1
370	10545	Nine Mile Road~006400~5B~Pink Lily	2021-Oct-11 08:23:36 404	150.460223	-23.38127	TRUE	3304	5.051514	12	Asphalt	0.222	0.0818	182	57	-2.4	-0.3
371	10545	Nine Mile Road~006400~5B~Pink Lily	2021-Oct-11 08:23:36 835	150.460215	-23.381342	TRUE	3312	5.60825	12	Asphalt	0.2603	0.0909	184	57	-3.6	-6.4
372	10545	Nine Mile Road~006400~5B~Pink Lily	2021-Oct-11 08:23:37 386	150.460205	-23.381413	TRUE	3320	7.529295	12	Asphalt	0.3263	0.1223	185	57	-3.9	-5.2
373	10545	Nine Mile Road~006400~5B~Pink Lily	2021-Oct-11 08:23:37 929	150.460193	-23.381498	TRUE	3329	5.131047	12	Asphalt	0.2159	0.0831	186	57	-1.7	2.7
374	10545	Nine Mile Road~006400~5B~Pink Lily	2021-Oct-11 08:23:38 587	150.460178	-23.381583	TRUE	3339	5.687784	12	Asphalt	0.2319	0.0922	187	57	-2.3	0.3
375	10545	Nine Mile Road~006400~5B~Pink Lily	2021-Oct-11 08:23:39 133	150.460165	-23.381667	TRUE	3348	4.739497	12	Asphalt	0.1582	0.0767	187	57	-2.6	-1.5
376	10545	Nine Mile Road~006400~5B~Pink Lily	2021-Oct-11 08:23:39 683	150.460155	-23.381738	TRUE	3356	4.574312	13	Asphalt	0.1771	0.074	188	57	-2.1	-4.9
377	10545	Nine Mile Road~006400~5B~Pink Lily	2021-Oct-11 08:23:40 227	150.460142	-23.38181	TRUE	3364	3.766739	13	Asphalt	0.157	0.0608	188	57	-2.6	4.3
378	10545	Nine Mile Road~006400~5B~Pink Lily	2021-Oct-11 08:23:40 668	150.46013	-23.381883	TRUE	3373	3.79121	13	Asphalt	0.1791	0.0612	188	57	-2.2	-3.8
379	10545	Nine Mile Road~006400~5B~Pink Lily	2021-Oct-11 08:23:41 323	150.460115	-23.381967	TRUE	3382	3.265064	13	Asphalt	0.1248	0.0526	188	57	-2.2	-0.8
380	10545	Nine Mile Road~006400~5B~Pink Lily	2021-Oct-11 08:23:41 760	150.460102	-23.38204	TRUE	3390	4.213307	13	Asphalt	0.1685	0.0688	188	58	-3.1	-3
381	10545	Nine Mile Road~006400~5B~Pink Lily	2021-Oct-11 08:23:42 308	150.460088	-23.382112	TRUE	3398	3.202011	12	Asphalt	0.1174	0.0521	188	58	-3.2	1.9
382	10545	Nine Mile Road~006400~5B~Pink Lily	2021-Oct-11 08:23:42 852	150.460073	-23.382197	TRUE	3408	3.335235	12	Asphalt	0.1689	0.0543	188	58	-2.4	0.4
383	10545	Nine Mile Road~006400~5B~Pink Lily	2021-Oct-11 08:23:43 508	150.460058	-23.382282	TRUE	3417	2.723613	12	Asphalt	0.108	0.0442	189	58	-3	-1.6
384	10545	Nine Mile Road~006400~5B~Pink Lily	2021-Oct-11 08:23:44 054	150.460042	-23.382367	TRUE	3427	3.320126	13	Asphalt	0.1475	0.0535	189	57	-2.7	-0.4
385	10545	Nine Mile Road~006400~5B~Pink Lily	2021-Oct-11 08:23:44 711	150.460023	-23.382448	TRUE	3436	4.011458	13	Asphalt	0.1502	0.0648	190	57	-1.7	-3.7
386	10545	Nine Mile Road~006400~5B~Pink Lily	2021-Oct-11 08:23:45 262	150.460002	-23.382532	TRUE	3445	2.800098	13	Asphalt	0.1566	0.045	191	57	-2.5	-5.8
387	10545	Nine Mile Road~006400~5B~Pink Lily	2021-Oct-11 08:23:45 916	150.459982	-23.382615	TRUE	3455	3.577081	13	Asphalt	0.143	0.0577	192	57	-2.2	-0.4
388	10545	Nine Mile Road~006400~5B~Pink Lily	2021-Oct-11 08:23:46 462	150.459958	-23.382697	TRUE	3464	3.179413	12	Asphalt	0.1298	0.0512	193	57	-1.9	-3.9
389	10545	Nine Mile Road~006400~5B~Pink Lily	2021-Oct-11 08:23:47 007	150.459937	-23.382765	TRUE	3472	3.405778	13	Asphalt	0.1188	0.0549	194	57	-1.7	-4.1
390	10545	Nine Mile Road~006400~5B~Pink Lily	2021-Oct-11 08:23:47 558	150.459905	-23.382847	TRUE	3482	3.154941	13	Asphalt	0.1521	0.0508	195	57	-2.5	-3.6
391	10545	Nine Mile Road~006400~5B~Pink Lily	2021-Oct-11 08:23:48 213	150.459872	-23.382927	TRUE	3491	2.849042	13	Asphalt	0.1448	0.0458	198	57	-1.9	-0.2
392	10545	Nine Mile Road~006400~5B~Pink Lily	2021-Oct-11 08:23:48 758	150.459837	-23.383007	TRUE	3501	3.473076	13	Asphalt	0.1347	0.056	199	57	-3.2	-1.5
393	10545	Nine Mile Road~006400~5B~Pink Lily	2021-Oct-11 08:23:49 310	150.459805	-23.383073	TRUE	3509	3.748385	13	Asphalt	0.1274	0.0605	201	57	-3.2	-0.6
394	10545	Nine Mile Road~006400~5B~Pink Lily	2021-Oct-11 08:23:49 741	150.459772	-23.383138	TRUE	3517	5.137166	13	Asphalt	0.1665	0.0832	203	57	-3.3	-0.6
395	10545	Nine Mile Road~006400~5B~Pink Lily	2021-Oct-11 08:23:50 292	150.459735	-23.383202	TRUE	3525	5.614368	12	Asphalt	0.2267	0.091	204	57	-2.9	3.3
396	10545	Nine Mile Road~006400~5B~Pink Lily	2021-Oct-11 08:23:50 839	150.459688	-23.383277	TRUE	3535	6.12216	12	Asphalt	0.2253	0.0993	206	57	-2.7	-0.5
397	10545	Nine Mile Road~006400~5B~Pink Lily	2021-Oct-11 08:23:51 388	150.459647	-23.383338	TRUE	3543	3.901334	12	Asphalt	0.1886	0.063	207	57	-2.6	0.1
398	10545	Nine Mile Road~006400~5B~Pink Lily	2021-Oct-11 08:23:51 929	150.459593	-23.38341	TRUE	3552	5.620486	12	Asphalt	0.2067	0.0911	210	57	-3.5	-2.7
399	10545	Nine Mile Road~006400~5B~Pink Lily	2021-Oct-11 08:23:52 478	150.459547	-23.383467	TRUE	3560	3.999222	12	Asphalt	0.1616	0.0646	212	57	-2.8	-4.6
400	10545	Nine Mile Road~006400~5B~Pink Lily	2021-Oct-11 08:23:53 132	150.459477	-23.383542	TRUE	3571	3.39966	12	Asphalt	0.1307	0.0548	215	57	-2.6	-4.2
401	10545	Nine Mile Road~006400~5B~Pink Lily	2021-Oct-11 08:23:53 794	150.459412	-23.383607	TRUE	3581	3.601553	12	Asphalt	0.1529	0.0581	217	57	-2.4	-0.7
402	10545	Nine Mile Road~006400~5B~Pink Lily	2021-Oct-11 08:23:54 339	150.459345	-23.383668	TRUE	3590	4.837385	12	Asphalt	0.1721	0.0783	220	57	-2.3	1
403	10545	Nine Mile Road~006400~5B~Pink Lily	2021-Oct-11 08:23:54 882	150.45929	-23.383718	TRUE	3599	3.644379	12	Asphalt	0.1421	0.0588	221	57	-2.4	0.7
404	10545	Nine Mile Road~006400~5B~Pink Lily	2021-Oct-11 08:23:55 540	150.459205	-23.383785	TRUE	3610	3.362952	12	Asphalt	0.1321	0.0542	224	57	-3.2	-0.2
405	10545	Nine Mile Road~006400~5B~Pink Lily	2021-Oct-11 08:23:56 198	150.459127	-23.383837	TRUE	3619	4.194997	12	Asphalt	0.1516	0.0678	227	57	-2.7	-1.6
406	10545	Nine Mile Road~006400~5B~Pink Lily	2021-Oct-11 08:23:56 743	150.459048	-23.383887	TRUE	3629	3.797328	12	Asphalt	0.1651	0.0613	229	57	-2.7	0
407	10545	Nine Mile Road~006400~5B~Pink Lily	2021-Oct-11 08:23:57 399	150.458968	-23.383932	TRUE	3638	2.836806	12	Asphalt	0.135	0.0456	232	57	-2.3	2.9
408	10545	Nine Mile Road~006400~5B~Pink Lily	2021-Oct-11 08:23:57 840	150.458898	-23.38397	TRUE	3646	3.85239	12	Asphalt	0.1278	0.0622	234	57	-2.9	-2.8
409	10545	Nine Mile Road~006400~5B~Pink Lily	2021-Oct-11 08:23:58 497	150.458817	-23.384012	TRUE	3655	4.256177	12	Asphalt	0.1465	0.0688	236	57	-2.6	-3.7
410	10545	Nine Mile Road~006400~5B~Pink Lily	2021-Oct-11 08:23:58 930	150.458745	-23.384042	TRUE	3663	2.371839	12	Asphalt	0.1133	0.038	238	57	-2.7	-2.8
411	10545	Nine Mile Road~006400~5B~Pink Lily	2021-Oct-11 08:23:59 586	150.458657	-23.384075	TRUE	3673	6.27511	12	Asphalt	0.2928	0.1018	241	57	-3	0.6
412	10545	Nine Mile Road~006400~5B~Pink Lily	2021-Oct-11 08:24:00 132	150.458567	-23.384105	TRUE	3683	9.064908	12	Asphalt	0.2614	0.1474	244	57	-1.6	-1.3
413	10545	Nine Mile Road~006400~5B~Pink Lily	2021-Oct-11 08:24:00 685	150.458493	-23.38413	TRUE	3692	4.794559	12	Asphalt	0.2359	0.0776	245	57	-2.4	1.1
414	10545	Nine Mile Road~006400~5B~Pink Lily	2021-Oct-11 08:24:01 232	150.458405	-23.38416	TRUE	3702	4.329592	12	Asphalt	0.1421	0.07	247	57	-1.8	1.7
415	10545	Nine Mile Road~006400~5B~Pink Lily	2021-Oct-11 08:24:01 887	150.458318	-23.384188	TRUE	3711	4.03593	12	Asphalt	0.1732	0.0652	248	57	-2.2	-1.6
416	10545	Nine Mile Road~006400~5B~Pink Lily	2021-Oct-11 08:24:02 541	150.458215	-23.384222	TRUE	3722	3.730031	13	Asphalt	0.1735	0.0602	249	57	-2	-5.6

Record_ID	Road_ID	Road_Name	Time_Stamp	Longitude	Latitude	Sealed	Chainage	IRI_Value	Altitude	Material	RoughoPeak	RoughoRMS	Heading	Speed	Pitch	Roll
417	10545	Nine Mile Road~006400~5B~Pink Lily	2021-Oct-11 08:24:03 086	150.458142	-23.384245	TRUE	3730	3.889098		13 Asphalt	0.1823	0.0628	249	57	-2.7	-2.8
418	10545	Nine Mile Road~006400~5B~Pink Lily	2021-Oct-11 08:24:03 529	150.458068	-23.384267	TRUE	3739	4.322309		13 Asphalt	0.1611	0.0706	250	58	-2.7	3.2
419	10545	Nine Mile Road~006400~5B~Pink Lily	2021-Oct-11 08:24:04 069	150.457993	-23.384287	TRUE	3747	4.96421		13 Asphalt	0.2762	0.0812	250	58	-2.7	-0.5
420	10545	Nine Mile Road~006400~5B~Pink Lily	2021-Oct-11 08:24:04 726	150.45789	-23.384315	TRUE	3758	6.066341		13 Asphalt	0.28	0.0994	251	58	-3.3	2
421	10545	Nine Mile Road~006400~5B~Pink Lily	2021-Oct-11 08:24:05 388	150.4578	-23.384342	TRUE	3767	4.388921		13 Asphalt	0.1955	0.0717	251	58	-2.3	2.9
422	10545	Nine Mile Road~006400~5B~Pink Lily	2021-Oct-11 08:24:05 932	150.45713	-23.384368	TRUE	3776	4.03593		13 Asphalt	0.1994	0.0652	251	57	-2.8	-1.9
423	10545	Nine Mile Road~006400~5B~Pink Lily	2021-Oct-11 08:24:06 477	150.457638	-23.38439	TRUE	3784	3.256512		13 Asphalt	0.1868	0.053	251	58	-2.5	-2.9
424	10545	Nine Mile Road~006400~5B~Pink Lily	2021-Oct-11 08:24:07 023	150.457565	-23.384412	TRUE	3792	3.466958		13 Asphalt	0.1647	0.0559	251	57	-2.7	1
425	10545	Nine Mile Road~006400~5B~Pink Lily	2021-Oct-11 08:24:07 464	150.45749	-23.384433	TRUE	3800	4.409126		13 Asphalt	0.1753	0.0713	251	57	-1.8	-2.5
426	10545	Nine Mile Road~006400~5B~Pink Lily	2021-Oct-11 08:24:08 120	150.4574	-23.384458	TRUE	3810	4.025581		13 Asphalt	0.1525	0.0657	252	58	-3	-1.1
427	10545	Nine Mile Road~006400~5B~Pink Lily	2021-Oct-11 08:24:08 667	150.45731	-23.384483	TRUE	3819	4.243586		13 Asphalt	0.1478	0.0693	252	58	-2.5	0.5
428	10545	Nine Mile Road~006400~5B~Pink Lily	2021-Oct-11 08:24:09 323	150.457222	-23.38451	TRUE	3828	4.770429		13 Asphalt	0.2325	0.078	252	58	-2.6	-1.8
429	10545	Nine Mile Road~006400~5B~Pink Lily	2021-Oct-11 08:24:09 869	150.457132	-23.384537	TRUE	3837	4.322309		13 Asphalt	0.1321	0.0706	252	58	-3.2	-3.5
430	10545	Nine Mile Road~006400~5B~Pink Lily	2021-Oct-11 08:24:10 418	150.457057	-23.384558	TRUE	3846	4.491868		14 Asphalt	0.1781	0.0734	252	58	-3	2.9
431	10545	Nine Mile Road~006400~5B~Pink Lily	2021-Oct-11 08:24:10 857	150.456982	-23.38458	TRUE	3854	4.370754		13 Asphalt	0.1753	0.0714	252	58	-2	0.7
432	10545	Nine Mile Road~006400~5B~Pink Lily	2021-Oct-11 08:24:11 398	150.456908	-23.384602	TRUE	3863	4.074027		13 Asphalt	0.1635	0.0665	252	58	-3.1	1.4
433	10545	Nine Mile Road~006400~5B~Pink Lily	2021-Oct-11 08:24:11 836	150.456833	-23.384625	TRUE	3871	3.928691		13 Asphalt	0.1458	0.0641	252	58	-2.2	-3.4
434	10545	Nine Mile Road~006400~5B~Pink Lily	2021-Oct-11 08:24:12 386	150.456758	-23.384647	TRUE	3879	6.544739		13 Asphalt	0.2254	0.1073	252	58	-3.7	-0.8
435	10545	Nine Mile Road~006400~5B~Pink Lily	2021-Oct-11 08:24:12 933	150.45667	-23.384673	TRUE	3888	4.952098		14 Asphalt	0.1664	0.081	252	58	-3	4.5
436	10545	Nine Mile Road~006400~5B~Pink Lily	2021-Oct-11 08:24:13 589	150.45658	-23.3847	TRUE	3897	6.072397		14 Asphalt	0.2757	0.0995	252	58	-2.6	-0.5
437	10545	Nine Mile Road~006400~5B~Pink Lily	2021-Oct-11 08:24:14 137	150.456492	-23.384725	TRUE	3906	4.903653		14 Asphalt	0.1694	0.0802	252	58	-1.5	0.8
438	10545	Nine Mile Road~006400~5B~Pink Lily	2021-Oct-11 08:24:14 680	150.456418	-23.384747	TRUE	3914	5.073212		14 Asphalt	0.204	0.083	252	58	-3.1	0.6
439	10545	Nine Mile Road~006400~5B~Pink Lily	2021-Oct-11 08:24:15 233	150.456328	-23.384773	TRUE	3924	5.224604		14 Asphalt	0.2591	0.0855	252	58	-3	-0.9
440	10545	Nine Mile Road~006400~5B~Pink Lily	2021-Oct-11 08:24:15 774	150.456255	-23.384797	TRUE	3932	10.826096		14 Asphalt	0.4019	0.178	252	58	-2.1	-1.4
441	10545	Nine Mile Road~006400~5B~Pink Lily	2021-Oct-11 08:24:16 434	150.45615	-23.384827	TRUE	3943	7.4652		14 Asphalt	0.286	0.1225	252	58	-3.5	1.2
442	10545	Nine Mile Road~006400~5B~Pink Lily	2021-Oct-11 08:24:17 088	150.456063	-23.384853	TRUE	3952	5.709057		14 Asphalt	0.2229	0.0935	252	58	-2.4	0.4
443	10545	Nine Mile Road~006400~5B~Pink Lily	2021-Oct-11 08:24:17 636	150.455973	-23.384878	TRUE	3963	4.285975		14 Asphalt	0.1764	0.07	252	58	-3.1	-0.3
444	10545	Nine Mile Road~006400~5B~Pink Lily	2021-Oct-11 08:24:18 179	150.455898	-23.384902	TRUE	3971	3.904468		14 Asphalt	0.191	0.0637	252	58	-2.6	-1.4
445	10545	Nine Mile Road~006400~5B~Pink Lily	2021-Oct-11 08:24:18 726	150.455812	-23.384927	TRUE	3981	3.931924		14 Asphalt	0.1758	0.0635	252	57	-2.5	-1.1
446	10545	Nine Mile Road~006400~5B~Pink Lily	2021-Oct-11 08:24:19 273	150.455737	-23.38495	TRUE	3989	3.613796		14 Asphalt	0.1444	0.0589	252	58	-2.9	-1
447	10545	Nine Mile Road~006400~5B~Pink Lily	2021-Oct-11 08:24:19 934	150.455633	-23.38498	TRUE	4000	4.709872		14 Asphalt	0.1894	0.077	252	58	-2.9	-1.8
448	10545	Nine Mile Road~006400~5B~Pink Lily	2021-Oct-11 08:24:20 585	150.455545	-23.385007	TRUE	4009	2.772058		14 Asphalt	0.1015	0.045	252	58	-2.5	0.6
449	10545	Nine Mile Road~006400~5B~Pink Lily	2021-Oct-11 08:24:21 136	150.455458	-23.385035	TRUE	4019	3.289536		14 Asphalt	0.1223	0.053	251	57	-3.1	1.7
450	10545	Nine Mile Road~006400~5B~Pink Lily	2021-Oct-11 08:24:21 792	150.455372	-23.385065	TRUE	4028	3.742267		14 Asphalt	0.165	0.0604	251	57	-2.5	-0.8
451	10545	Nine Mile Road~006400~5B~Pink Lily	2021-Oct-11 08:24:22 339	150.455282	-23.38509	TRUE	4038	5.271761		14 Asphalt	0.2912	0.0854	251	57	-2.9	-9.3
452	10545	Nine Mile Road~006400~5B~Pink Lily	2021-Oct-11 08:24:22 997	150.455192	-23.385117	TRUE	4047	6.862435		15 Asphalt	0.2654	0.1114	252	57	-3.9	-6.6
453	10545	Nine Mile Road~006400~5B~Pink Lily	2021-Oct-11 08:24:23 540	150.455102	-23.385142	TRUE	4056	6.733958		15 Asphalt	0.2544	0.1093	252	57	-3.2	-3.8
454	10545	Nine Mile Road~006400~5B~Pink Lily	2021-Oct-11 08:24:24 089	150.455027	-23.385165	TRUE	4065	5.999729		15 Asphalt	0.2579	0.0983	252	58	-1.5	1.1
455	10545	Nine Mile Road~006400~5B~Pink Lily	2021-Oct-11 08:24:24 636	150.454938	-23.38519	TRUE	4075	6.55685		16 Asphalt	0.2973	0.1075	252	58	-2.3	-1.4
456	10545	Nine Mile Road~006400~5B~Pink Lily	2021-Oct-11 08:24:25 180	150.454865	-23.385213	TRUE	4083	8.567332		15 Asphalt	0.3052	0.1407	252	58	-4.4	-4.2
457	10545	Nine Mile Road~006400~5B~Pink Lily	2021-Oct-11 08:24:25 727	150.454777	-23.385242	TRUE	4092	5.672723		15 Asphalt	0.2246	0.0929	251	58	-1.7	-6.9
458	10545	Nine Mile Road~006400~5B~Pink Lily	2021-Oct-11 08:24:26 387	150.454688	-23.385268	TRUE	4101	6.732465		15 Asphalt	0.2915	0.1104	252	58	-4.2	0.5
459	10545	Nine Mile Road~006400~5B~Pink Lily	2021-Oct-11 08:24:26 934	150.4546	-23.385293	TRUE	4110	3.674353		15 Asphalt	0.1432	0.0599	252	58	-2.7	-1
460	10545	Nine Mile Road~006400~5B~Pink Lily	2021-Oct-11 08:24:27 478	150.454527	-23.385315	TRUE	4118	5.908031		15 Asphalt	0.2414	0.0958	252	57	-2.2	4.8
461	10545	Nine Mile Road~006400~5B~Pink Lily	2021-Oct-11 08:24:28 023	150.454452	-23.385335	TRUE	4127	8.740655		15 Asphalt	0.2727	0.1421	252	57	-3.4	-6.3
462	10545	Nine Mile Road~006400~5B~Pink Lily	2021-Oct-11 08:24:28 571	150.454363	-23.385362	TRUE	4136	4.19514		15 Asphalt	0.1405	0.0685	252	58	-2.4	-3.7
463	10545	Nine Mile Road~006400~5B~Pink Lily	2021-Oct-11 08:24:29 227	150.454273	-23.385388	TRUE	4146	3.395792		14 Asphalt	0.1458	0.0553	252	58	-2.9	-2.7
464	10545	Nine Mile Road~006400~5B~Pink Lily	2021-Oct-11 08:24:29 773	150.454183	-23.385413	TRUE	4155	3.298901		14 Asphalt	0.13	0.0537	252	58	-1.8	-2.4
465	10545	Nine Mile Road~006400~5B~Pink Lily	2021-Oct-11 08:24:30 435	150.454097	-23.385438	TRUE	4164	3.681087		14 Asphalt	0.1745	0.0594	252	57	-3	-3
466	10545	Nine Mile Road~006400~5B~Pink Lily	2021-Oct-11 08:24:30 867	150.454023	-23.38546	TRUE	4172	7.406935		14 Asphalt	0.2396	0.1203	252	57	-2.5	-2.9
467	10545	Nine Mile Road~006400~5B~Pink Lily	2021-Oct-11 08:24:31 416	150.453948	-23.385482	TRUE	4180	5.836226		14 Asphalt	0.2243	0.0956	252	58	-2.4	-2.8
468	10545	Nine Mile Road~006400~5B~Pink Lily	2021-Oct-11 08:24:31 852	150.453873	-23.385505	TRUE	4188	3.644379		14 Asphalt	0.1335	0.0588	252	57	-2.6	3.5

Record_ID	Road_ID	Road_Name	Time_Stamp	Longitude	Latitude	Sealed	Chainage	IRI_Value	Altitude	Material	RoughoPeak	RoughoRMS	Heading	Speed	Pitch	Roll
469	10545	Nine Mile Road~006400~5B~Pink Lily	2021-Oct-11 08:24:32	507	150.453785	-23.385532	TRUE	4198	4.378536	14 Asphalt	0.1636	0.0708	252	57	-2.7	2.2
470	10545	Nine Mile Road~006400~5B~Pink Lily	2021-Oct-11 08:24:33	058	150.453697	-23.385556	TRUE	4207	3.124351	14 Asphalt	0.1293	0.0503	252	57	-2.2	-3.9
471	10545	Nine Mile Road~006400~5B~Pink Lily	2021-Oct-11 08:24:33	714	150.453607	-23.385588	TRUE	4216	6.786966	14 Asphalt	0.3266	0.1113	252	58	-2.6	-1.4
472	10545	Nine Mile Road~006400~5B~Pink Lily	2021-Oct-11 08:24:34	154	150.453533	-23.38561	TRUE	4225	12.497459	14 Asphalt	0.4532	0.2056	252	58	-5	0.1
473	10545	Nine Mile Road~006400~5B~Pink Lily	2021-Oct-11 08:24:34	696	150.453458	-23.385633	TRUE	4233	10.317419	14 Asphalt	0.3784	0.1696	252	58	-2.9	-1.4
474	10545	Nine Mile Road~006400~5B~Pink Lily	2021-Oct-11 08:24:35	137	150.453385	-23.385655	TRUE	4241	9.839022	13 Asphalt	0.3201	0.1617	252	58	-4.4	1.1
475	10545	Nine Mile Road~006400~5B~Pink Lily	2021-Oct-11 08:24:35	679	150.45331	-23.385678	TRUE	4249	4.225418	13 Asphalt	0.1626	0.069	252	58	-2.5	-1.2
476	10545	Nine Mile Road~006400~5B~Pink Lily	2021-Oct-11 08:24:36	232	150.453222	-23.385703	TRUE	4258	3.214122	13 Asphalt	0.1572	0.0523	252	58	-2.8	1.3
477	10545	Nine Mile Road~006400~5B~Pink Lily	2021-Oct-11 08:24:36	887	150.453133	-23.38573	TRUE	4267	3.335235	13 Asphalt	0.1122	0.0543	252	58	-2.7	0
478	10545	Nine Mile Road~006400~5B~Pink Lily	2021-Oct-11 08:24:37	434	150.45306	-23.385752	TRUE	4276	4.364699	13 Asphalt	0.1477	0.0713	252	58	-3.1	-3.4
479	10545	Nine Mile Road~006400~5B~Pink Lily	2021-Oct-11 08:24:37	867	150.452987	-23.385777	TRUE	4284	5.944739	13 Asphalt	0.1891	0.0964	252	57	-1.5	1.6
480	10545	Nine Mile Road~006400~5B~Pink Lily	2021-Oct-11 08:24:38	414	150.452913	-23.3858	TRUE	4292	6.157176	13 Asphalt	0.2171	0.1009	252	58	-2.6	1
481	10545	Nine Mile Road~006400~5B~Pink Lily	2021-Oct-11 08:24:38	964	150.452825	-23.385828	TRUE	4302	4.470306	14 Asphalt	0.1884	0.0723	252	57	-3.1	-1.6
482	10545	Nine Mile Road~006400~5B~Pink Lily	2021-Oct-11 08:24:39	622	150.452737	-23.385855	TRUE	4311	3.099064	13 Asphalt	0.1518	0.0504	252	58	-1.9	-2.7
483	10545	Nine Mile Road~006400~5B~Pink Lily	2021-Oct-11 08:24:40	057	150.452663	-23.385877	TRUE	4319	3.687205	14 Asphalt	0.1578	0.0595	252	57	-2.5	3.3
484	10545	Nine Mile Road~006400~5B~Pink Lily	2021-Oct-11 08:24:40	603	150.45259	-23.385897	TRUE	4327	3.24671	14 Asphalt	0.1313	0.0523	252	57	-2.5	-1
485	10545	Nine Mile Road~006400~5B~Pink Lily	2021-Oct-11 08:24:41	043	150.452513	-23.38592	TRUE	4336	2.977951	14 Asphalt	0.1088	0.0484	252	58	-1.6	-1.6
486	10545	Nine Mile Road~006400~5B~Pink Lily	2021-Oct-11 08:24:41	585	150.452438	-23.385942	TRUE	4344	3.026396	14 Asphalt	0.1567	0.0492	252	58	-3.4	-1.3
487	10545	Nine Mile Road~006400~5B~Pink Lily	2021-Oct-11 08:24:42	137	150.45235	-23.385968	TRUE	4353	3.583518	14 Asphalt	0.1226	0.0584	252	58	-2.2	0.8
488	10545	Nine Mile Road~006400~5B~Pink Lily	2021-Oct-11 08:24:42	788	150.452262	-23.385993	TRUE	4363	3.962514	14 Asphalt	0.1503	0.064	252	57	-2.2	0
489	10545	Nine Mile Road~006400~5B~Pink Lily	2021-Oct-11 08:24:43	337	150.452175	-23.38602	TRUE	4371	2.94693	13 Asphalt	0.1128	0.0474	252	57	-3.3	-2.2
490	10545	Nine Mile Road~006400~5B~Pink Lily	2021-Oct-11 08:24:43	882	150.452102	-23.386042	TRUE	4379	4.146053	13 Asphalt	0.1624	0.067	252	57	-2.1	-2.7
491	10545	Nine Mile Road~006400~5B~Pink Lily	2021-Oct-11 08:24:44	434	150.452027	-23.386065	TRUE	4388	7.84743	14 Asphalt	0.3859	0.1275	252	57	-1.8	4.3
492	10545	Nine Mile Road~006400~5B~Pink Lily	2021-Oct-11 08:24:44	978	150.451937	-23.386088	TRUE	4397	11.041014	14 Asphalt	0.3259	0.1797	252	57	-4.3	-4.2
493	10545	Nine Mile Road~006400~5B~Pink Lily	2021-Oct-11 08:24:45	529	150.451848	-23.386115	TRUE	4407	3.815682	13 Asphalt	0.1505	0.0616	252	57	-2.3	-2.9
494	10545	Nine Mile Road~006400~5B~Pink Lily	2021-Oct-11 08:24:46	179	150.45176	-23.386138	TRUE	4415	3.074842	14 Asphalt	0.1329	0.05	253	58	-2.8	-5.3
495	10545	Nine Mile Road~006400~5B~Pink Lily	2021-Oct-11 08:24:46	731	150.451687	-23.386155	TRUE	4424	2.598205	14 Asphalt	0.0907	0.0417	254	57	-2.4	-2.4
496	10545	Nine Mile Road~006400~5B~Pink Lily	2021-Oct-11 08:24:47	164	150.451612	-23.386173	TRUE	4432	2.995873	14 Asphalt	0.1123	0.0482	254	57	-2.8	-3.4
497	10545	Nine Mile Road~006400~5B~Pink Lily	2021-Oct-11 08:24:47	710	150.451537	-23.386193	TRUE	4440	3.748385	14 Asphalt	0.1616	0.0605	254	57	-2.2	-1.8
498	10545	Nine Mile Road~006400~5B~Pink Lily	2021-Oct-11 08:24:48	148	150.45146	-23.38621	TRUE	4449	2.830688	13 Asphalt	0.114	0.0455	255	57	-2.3	-1.6

**ATTACHMENT D – PAVEMENT ROUGHNESS DATA (IRI CONVERSION)**



KILOMETRES		IRI	NAASRA
Start Dist	End Sist		
0.00	0.01	6.47	170.08
0.01	0.02	4.01	104.85
0.02	0.03	6.43	169.09
0.03	0.03	5.20	136.61
0.03	0.04	6.67	175.45
0.04	0.05	8.56	225.53
0.05	0.06	8.62	227.04
0.06	0.07	5.23	137.37
0.07	0.08	4.56	119.60
0.08	0.09	5.34	140.20
0.09	0.09	6.22	163.44
0.09	0.10	5.65	148.41
0.10	0.11	6.09	160.17
0.11	0.12	4.66	122.20
0.12	0.13	5.67	148.94
0.13	0.14	3.81	99.72
0.14	0.15	3.71	96.97
0.15	0.16	3.56	93.01
0.16	0.17	4.77	125.17
0.17	0.17	3.11	81.14
0.17	0.19	4.99	130.84
0.19	0.19	11.50	303.31
0.19	0.20	5.38	141.17
0.20	0.21	4.98	130.78
0.21	0.22	5.81	152.51
0.22	0.23	4.84	126.86
0.23	0.24	4.64	121.58
0.24	0.25	4.24	111.02
0.25	0.25	4.74	124.31
0.25	0.26	4.78	125.33
0.26	0.27	4.61	120.73
0.27	0.28	6.66	175.06
0.28	0.29	7.17	188.69
0.29	0.30	5.14	134.87
0.30	0.31	4.94	129.59
0.31	0.32	3.61	94.33
0.32	0.32	6.04	158.71
0.32	0.33	3.62	94.67
0.33	0.34	4.66	122.09
0.34	0.35	4.68	122.60
0.35	0.36	4.67	122.43
0.36	0.37	6.61	173.87
0.37	0.38	6.51	171.15
0.38	0.39	6.77	178.13
0.39	0.39	7.79	205.04
<b>CONTINUE RIGHT ---&gt;</b>			

KILOMETRES		IRI	NAASRA
Start Dist	End Sist		
0.37	0.38	6.51	171.15
0.38	0.39	6.77	178.13
0.39	0.39	7.79	205.04
0.39	0.40	6.44	169.44
0.40	0.41	4.93	129.42
0.41	0.42	6.27	164.84
0.42	0.43	6.97	183.41
0.43	0.44	4.70	123.29
0.44	0.45	5.25	137.93
0.45	0.46	5.39	141.51
0.46	0.46	5.60	146.96
0.46	0.47	3.58	93.65
0.47	0.48	4.56	119.54
0.48	0.49	3.78	98.76
0.49	0.50	5.52	145.09
0.50	0.51	4.23	110.85
0.51	0.52	5.03	131.97
0.52	0.53	8.40	221.22
0.53	0.53	7.75	204.10
0.53	0.54	5.99	157.37
0.54	0.55	4.71	123.37
0.55	0.56	4.81	126.08
0.56	0.57	8.43	222.17
0.57	0.58	4.72	123.69
0.58	0.59	6.29	165.42
0.59	0.59	4.52	118.35
0.59	0.60	7.22	190.01
0.60	0.61	6.23	163.72
0.61	0.62	6.56	172.43
0.62	0.63	4.58	119.97
0.63	0.64	6.00	157.79
0.64	0.64	9.52	251.02
0.64	0.65	9.24	243.48
0.65	0.66	9.69	255.35
0.66	0.67	7.59	199.72
0.67	0.68	8.31	218.89
0.68	0.69	6.91	181.70
0.69	0.70	5.83	153.13
0.70	0.71	5.54	145.50
0.71	0.72	6.25	164.35
0.72	0.73	6.26	164.67
0.73	0.73	8.50	223.95
0.73	0.74	8.11	213.58
0.74	0.75	4.64	121.52
0.75	0.76	4.89	128.33
<b>CONTINUE RIGHT ---&gt;</b>			

KILOMETRES		IRI	NAASRA
Start Dist	End Sist		
0.76	0.77	4.97	130.28
0.77	0.78	4.97	130.28
0.78	0.79	4.41	115.53
0.79	0.79	5.76	151.34
0.79	0.80	4.97	130.39
0.80	0.81	6.76	177.71
0.81	0.82	6.11	160.55
0.82	0.83	7.03	184.93
0.83	0.84	7.80	205.31
0.84	0.85	6.21	163.17
0.85	0.85	5.26	138.09
0.85	0.86	5.08	133.28
0.86	0.87	7.59	199.85
0.87	0.88	6.30	165.61
0.88	0.89	3.24	84.57
0.89	0.90	4.64	121.57
0.90	0.91	4.98	130.60
0.91	0.92	4.43	116.12
0.92	0.93	4.22	110.50
0.93	0.94	4.09	107.10
0.94	0.95	5.14	134.81
0.95	0.95	4.55	119.16
0.95	0.96	4.37	114.51
0.96	0.97	4.48	117.31
0.97	0.98	4.51	118.12
0.98	0.99	3.71	97.05
0.99	1.00	4.78	125.25
1.00	1.01	7.88	207.39
1.01	1.02	5.68	149.16
1.02	1.03	8.04	211.72
1.03	1.03	6.42	168.73
1.03	1.04	4.52	118.44
1.04	1.05	4.82	126.39
1.05	1.06	3.62	94.62
1.06	1.07	4.04	105.64
1.07	1.08	5.23	137.24
1.08	1.09	4.75	124.60
1.09	1.10	3.09	80.52
1.10	1.11	6.12	160.91
1.11	1.12	4.89	128.33
1.12	1.13	4.59	120.45
1.13	1.13	4.52	118.52
1.13	1.14	5.19	136.11
1.14	1.15	5.76	151.18
1.15	1.16	5.16	135.30
<b>CONTINUE RIGHT ---&gt;</b>			

KILOMETRES		IRI	NAASRA
Start Dist	End Sist		
1.16	1.17	4.63	121.36
1.17	1.18	4.25	111.31
1.18	1.19	5.04	132.22
1.19	1.20	6.94	182.46
1.20	1.21	6.02	158.30
1.21	1.22	3.74	97.83
1.22	1.23	7.79	205.15
1.23	1.23	5.49	144.19
1.23	1.24	5.47	143.55
1.24	1.25	5.47	143.71
1.25	1.26	4.92	128.95
1.26	1.27	5.15	135.20
1.27	1.28	4.26	111.46
1.28	1.29	4.10	107.45
1.29	1.30	4.29	112.43
1.30	1.31	5.56	146.11
1.31	1.32	5.20	136.49
1.32	1.33	4.19	109.69
1.33	1.34	3.78	98.84
1.34	1.35	4.29	112.29
1.35	1.36	3.82	99.97
1.36	1.37	4.70	123.14
1.37	1.38	4.31	112.77
1.38	1.39	5.92	155.56
1.39	1.39	5.35	140.32
1.39	1.40	8.07	212.60
1.40	1.41	7.15	188.13
1.41	1.42	6.67	175.33
1.42	1.43	4.92	129.14
1.43	1.44	4.12	107.86
1.44	1.45	3.92	102.46
1.45	1.46	4.33	113.42
1.46	1.47	4.36	114.23
1.47	1.48	4.26	111.48
1.48	1.49	3.96	103.53
1.49	1.50	4.48	117.31
1.50	1.50	4.24	110.99
1.50	1.51	4.06	106.29
1.51	1.52	4.76	124.77
1.52	1.53	6.13	161.19
1.53	1.54	3.08	80.34
1.54	1.55	4.23	110.67
1.55	1.56	5.14	134.81
1.56	1.57	6.92	181.97
1.57	1.58	4.57	119.90
<b>CONTINUE NEXT PAGE</b>			

KILOMETRES		IRI	NAASRA
Start Dist	End Sist		
1.58	1.59	8.43	221.99
1.59	1.59	6.32	166.09
1.59	1.60	7.68	202.23
1.60	1.61	13.61	359.30
1.61	1.62	10.97	289.26
1.62	1.63	5.74	150.86
1.63	1.64	4.32	113.26
1.64	1.64	5.41	141.94
1.64	1.65	4.80	125.90
1.65	1.66	3.42	89.27
1.66	1.67	4.13	108.09
1.67	1.68	5.32	139.54
1.68	1.69	4.01	105.05
1.69	1.70	3.74	97.83
1.70	1.71	5.08	133.35
1.71	1.72	4.51	118.12
1.72	1.73	3.19	83.28
1.73	1.74	4.59	120.23
1.74	1.75	5.96	156.53
1.75	1.76	3.88	101.59
1.76	1.77	5.66	148.59
1.77	1.78	5.27	138.22
1.78	1.79	4.53	118.77
1.79	1.80	4.27	111.80
1.80	1.80	3.94	103.21
1.80	1.81	4.30	112.61
1.81	1.82	3.77	98.67
1.82	1.83	4.79	125.74
1.83	1.84	4.54	119.00
1.84	1.85	10.48	276.37
1.85	1.86	8.66	228.08
1.86	1.87	7.20	189.43
1.87	1.87	4.37	114.39
1.87	1.88	5.17	135.62
1.88	1.89	3.47	90.73
1.89	1.90	3.77	98.51
1.90	1.91	2.63	68.37
1.91	1.92	3.97	103.86
1.92	1.93	5.17	135.62
1.93	1.94	5.04	132.16
1.94	1.95	5.87	154.13
1.95	1.96	6.09	160.07
1.96	1.97	10.33	272.36
1.97	1.98	6.21	163.12
1.98	1.99	5.71	149.96
<b>CONTINUE RIGHT ---&gt;</b>			

KILOMETRES		IRI	NAASRA
Start Dist	End Sist		
1.99	2.00	8.91	234.66
2.00	2.01	7.88	207.39
2.01	2.01	4.69	122.85
2.01	2.02	4.00	104.73
2.02	2.03	4.47	117.08
2.03	2.04	6.45	169.53
2.04	2.05	5.39	141.46
2.05	2.06	4.95	129.75
2.06	2.07	4.48	117.31
2.07	2.07	6.72	176.75
2.07	2.08	6.70	176.30
2.08	2.09	4.20	110.02
2.09	2.10	5.05	132.38
2.10	2.11	6.94	182.53
2.11	2.12	6.34	166.81
2.12	2.12	4.08	106.81
2.12	2.13	4.61	120.93
2.13	2.14	4.38	114.67
2.14	2.15	8.74	230.17
2.15	2.16	10.14	267.38
2.16	2.17	4.73	123.96
2.17	2.18	4.12	107.91
2.18	2.19	5.21	136.76
2.19	2.20	7.85	206.59
2.20	2.21	6.44	169.37
2.21	2.22	4.43	115.96
2.22	2.22	4.81	126.06
2.22	2.23	7.40	194.72
2.23	2.24	8.69	228.97
2.24	2.25	6.63	174.35
2.25	2.26	5.28	138.54
2.26	2.27	5.46	143.24
2.27	2.28	5.31	139.51
2.28	2.29	5.46	143.40
2.29	2.30	3.96	103.53
2.30	2.30	5.10	133.84
2.30	2.31	5.50	144.38
2.31	2.32	5.78	151.83
2.32	2.33	6.59	173.39
2.33	2.34	9.26	244.05
2.34	2.35	7.14	187.97
2.35	2.36	11.64	307.09
2.36	2.37	6.73	176.95
2.37	2.38	5.35	140.49
2.38	2.39	8.13	214.06
<b>CONTINUE RIGHT ---&gt;</b>			

KILOMETRES		IRI	NAASRA
Start Dist	End Sist		
2.39	2.39	6.03	158.48
2.39	2.40	4.88	128.01
2.40	2.41	5.82	152.96
2.41	2.42	10.67	281.32
2.42	2.43	5.09	133.52
2.43	2.44	6.68	175.79
2.44	2.45	7.53	198.25
2.45	2.46	5.32	139.70
2.46	2.47	4.21	110.18
2.47	2.47	4.82	126.38
2.47	2.48	5.02	131.84
2.48	2.49	6.51	171.12
2.49	2.50	6.75	177.55
2.50	2.51	5.82	153.01
2.51	2.52	3.49	91.09
2.52	2.53	4.03	105.37
2.53	2.53	4.53	118.68
2.53	2.54	4.15	108.58
2.54	2.55	8.20	216.05
2.55	2.56	6.62	174.19
2.56	2.57	11.04	291.13
2.57	2.58	7.72	203.22
2.58	2.59	4.98	130.55
2.59	2.60	4.10	107.29
2.60	2.61	4.49	117.72
2.61	2.62	4.35	113.87
2.62	2.63	4.17	109.22
2.63	2.63	5.29	138.87
2.63	2.64	5.66	148.75
2.64	2.65	6.89	181.33
2.65	2.66	5.92	155.67
2.66	2.67	4.59	120.31
2.67	2.68	5.03	132.09
2.68	2.69	6.80	178.75
2.69	2.70	10.20	268.96
2.70	2.71	15.15	400.11
2.71	2.72	13.12	346.31
2.72	2.73	7.35	193.48
2.73	2.74	4.12	107.75
2.74	2.75	4.78	125.41
2.75	2.76	3.87	101.20
2.76	2.77	4.84	127.03
2.77	2.78	4.38	114.67
2.78	2.78	5.48	143.87
2.78	2.79	5.21	136.81
<b>CONTINUE RIGHT ---&gt;</b>			

KILOMETRES		IRI	NAASRA
Start Dist	End Sist		
2.79	2.80	6.05	159.11
2.80	2.81	6.71	176.59
2.81	2.82	6.61	173.70
2.82	2.83	5.27	138.41
2.83	2.84	7.57	199.21
2.84	2.85	8.00	210.76
2.85	2.86	8.29	218.46
2.86	2.87	6.70	176.27
2.87	2.88	4.84	126.87
2.88	2.89	5.73	150.53
2.89	2.90	7.82	205.96
2.90	2.90	11.09	292.50
2.90	2.91	6.83	179.54
2.91	2.92	4.45	116.66
2.92	2.93	4.00	104.67
2.93	2.94	3.96	103.53
2.94	2.95	4.26	111.64
2.95	2.96	8.48	223.30
2.96	2.97	7.85	206.77
2.97	2.98	13.75	363.00
2.98	2.99	10.81	285.21
2.99	3.00	8.31	218.76
3.00	3.01	5.88	154.59
3.01	3.01	6.00	157.66
3.01	3.02	4.63	121.29
3.02	3.03	3.07	80.03
3.03	3.04	4.95	129.97
3.04	3.05	6.23	163.85
3.05	3.06	6.61	173.87
3.06	3.07	5.74	150.86
3.07	3.08	6.39	168.04
3.08	3.09	4.63	121.36
3.09	3.09	6.72	176.63
3.09	3.10	4.60	120.55
3.10	3.11	7.12	187.34
3.11	3.12	5.66	148.68
3.12	3.13	7.25	190.71
3.13	3.14	6.76	177.71
3.14	3.15	5.04	132.32
3.15	3.16	5.13	134.72
3.16	3.17	15.27	403.26
3.17	3.18	7.76	204.18
3.18	3.19	12.70	335.13
3.19	3.19	15.49	409.03
3.19	3.20	26.53	701.39
<b>CONTINUE NEXT PAGE</b>			

KILOMETRES		IRI	NAASRA
Start Dist	End Sist		
3.20	3.21	11.99	316.33
3.21	3.22	8.96	236.10
3.22	3.23	6.78	178.25
3.23	3.24	3.91	102.40
3.24	3.25	5.08	133.35
3.25	3.25	6.09	160.10
3.25	3.26	6.41	168.57
3.26	3.27	2.96	77.13
3.27	3.28	2.67	69.50
3.28	3.29	7.13	187.65
3.29	3.30	3.33	87.00
3.30	3.30	2.91	75.82
3.30	3.31	5.05	132.54
3.31	3.32	5.61	147.29
3.32	3.33	7.53	198.18
3.33	3.34	5.13	134.65
3.34	3.35	5.69	149.40
3.35	3.36	4.74	124.28
3.36	3.36	4.57	119.90
3.36	3.37	3.77	98.51
3.37	3.38	3.79	99.16
3.38	3.39	3.27	85.22
3.39	3.40	4.21	110.34
3.40	3.41	3.20	83.55
3.41	3.42	3.34	87.08
3.42	3.43	2.72	70.88
3.43	3.44	3.32	86.68
3.44	3.45	4.01	104.99
3.45	3.46	2.80	72.90
3.46	3.46	3.58	93.49
3.46	3.47	3.18	82.95
3.47	3.48	3.41	88.95
3.48	3.49	3.15	82.30
3.49	3.50	2.85	74.20
3.50	3.51	3.47	90.73
3.51	3.52	3.75	98.02
3.52	3.53	5.14	134.81
3.53	3.54	5.61	147.45
3.54	3.54	6.12	160.91
3.54	3.55	3.90	102.08
3.55	3.56	5.62	147.62
3.56	3.57	4.00	104.67
3.57	3.58	3.40	88.79
3.58	3.59	3.60	94.14
3.59	3.60	4.84	126.87
<b>CONTINUE RIGHT ---&gt;</b>			

KILOMETRES		IRI	NAASRA
Start Dist	End Sist		
3.60	3.61	3.64	95.27
3.61	3.62	3.36	87.81
3.62	3.63	4.19	109.86
3.63	3.64	3.80	99.32
3.64	3.65	2.84	73.88
3.65	3.66	3.85	100.78
3.66	3.66	4.26	111.48
3.66	3.67	2.37	61.56
3.67	3.68	6.28	164.96
3.68	3.69	9.06	238.86
3.69	3.70	4.79	125.74
3.70	3.71	4.33	113.42
3.71	3.72	4.04	105.64
3.72	3.73	3.73	97.54
3.73	3.74	3.89	101.75
3.74	3.75	4.32	113.23
3.75	3.76	4.96	130.23
3.76	3.77	6.07	159.43
3.77	3.78	4.39	114.99
3.78	3.78	4.04	105.64
3.78	3.79	3.26	85.00
3.79	3.80	3.47	90.57
3.80	3.81	4.41	115.53
3.81	3.82	4.03	105.37
3.82	3.83	4.24	111.14
3.83	3.84	4.77	125.10
3.84	3.85	4.32	113.23
3.85	3.85	4.49	117.72
3.85	3.86	4.37	114.51
3.86	3.87	4.07	106.65
3.87	3.88	3.93	102.80
3.88	3.89	6.54	172.10
3.89	3.90	4.95	129.91
3.90	3.91	6.07	159.59
3.91	3.91	4.90	128.63
3.91	3.92	5.07	133.12
3.92	3.93	5.22	137.13
3.93	3.94	10.83	285.51
3.94	3.95	7.47	196.48
3.95	3.96	5.71	149.96
3.96	3.97	4.29	112.27
3.97	3.98	3.90	102.16
3.98	3.99	3.93	102.89
3.99	4.00	3.61	94.46
4.00	4.01	4.71	123.49
<b>CONTINUE RIGHT ---&gt;</b>			

KILOMETRES		IRI	NAASRA
Start Dist	End Sist		
4.01	4.02	2.77	72.16
4.02	4.03	3.29	85.87
4.03	4.04	3.74	97.86
4.04	4.05	5.27	138.38
4.05	4.06	6.86	180.52
4.06	4.07	6.73	177.11
4.07	4.08	6.00	157.66
4.08	4.08	6.56	172.42
4.08	4.09	8.57	225.68
4.09	4.10	5.67	149.00
4.10	4.11	6.73	177.07
4.11	4.12	3.67	96.06
4.12	4.13	5.91	155.23
4.13	4.14	8.74	230.27
4.14	4.15	4.20	109.86
4.15	4.16	3.40	88.68
4.16	4.16	3.30	86.12
4.16	4.17	3.68	96.24
4.17	4.18	7.41	194.94
4.18	4.19	5.84	153.33
4.19	4.20	3.64	95.27
4.20	4.21	4.38	114.72
4.21	4.22	3.12	81.49
4.22	4.23	6.79	178.52
4.23	4.23	12.50	329.79
4.23	4.24	10.32	272.04
4.24	4.25	9.84	259.37
4.25	4.26	4.23	110.66
4.26	4.27	3.21	83.87
4.27	4.28	3.34	87.08
4.28	4.28	4.36	114.35
4.28	4.29	5.94	156.21
4.29	4.30	6.16	161.83
4.30	4.31	4.47	117.15
4.31	4.32	3.10	80.82
4.32	4.33	3.69	96.40
4.33	4.34	3.25	84.74
4.34	4.34	2.98	77.62
4.34	4.35	3.03	78.90
4.35	4.36	3.58	93.66
4.36	4.37	3.96	103.70
4.37	4.38	2.95	76.79
4.38	4.39	4.15	108.56
4.39	4.40	7.85	206.61
4.40	4.41	11.04	291.21
<b>CONTINUE RIGHT ---&gt;</b>			

KILOMETRES		IRI	NAASRA
Start Dist	End Sist		
4.41	4.42	3.82	99.81
4.42	4.42	3.07	80.18
4.42	4.43	2.60	67.56
4.43	4.44	3.00	78.09
4.44	4.45	3.75	98.02
4.45	0.00	2.83	73.71
<b>END OF DATA SET</b>			