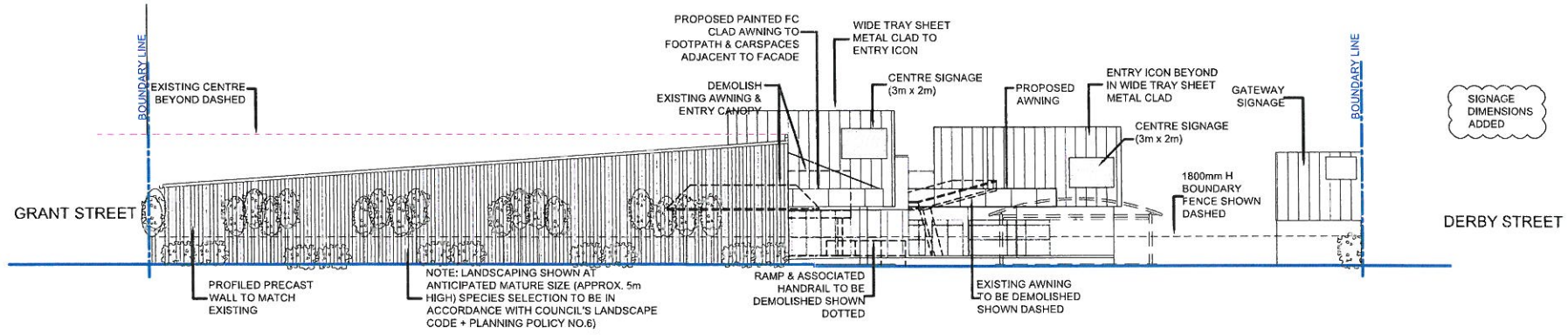
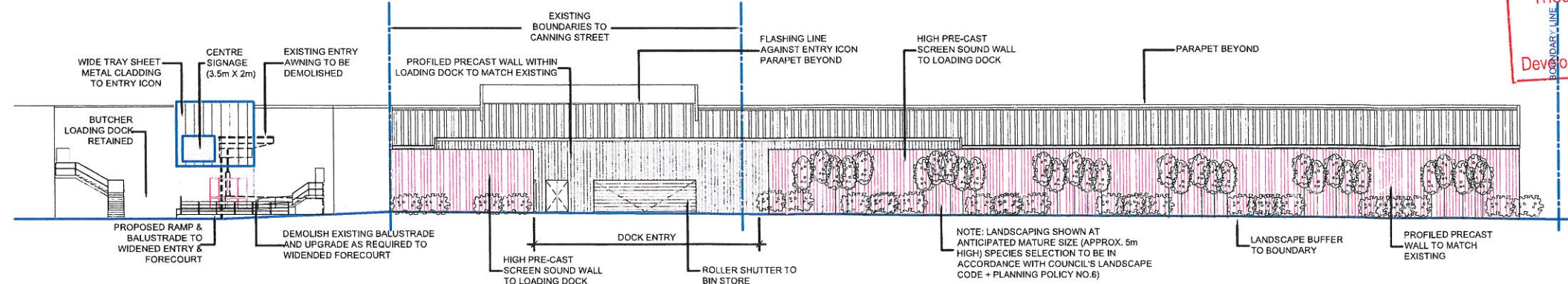


1 NORTH ELEVATION



2 EAST ELEVATION



3 SOUTH ELEVATION

**ROCKHAMPTON REGIONAL COUNCIL**  
**AMENDED PLANS APPROVED**  
 28 May 2013  
 DATE  
 These plans are approved subject to the current conditions of approval associated with Development Permit No. D/366-2010 dated 29/7/2011

**ALLENSTOWN PLAZA**  
 DERBY STREET  
 ROCKHAMPTON, QLD 4702

Elevations

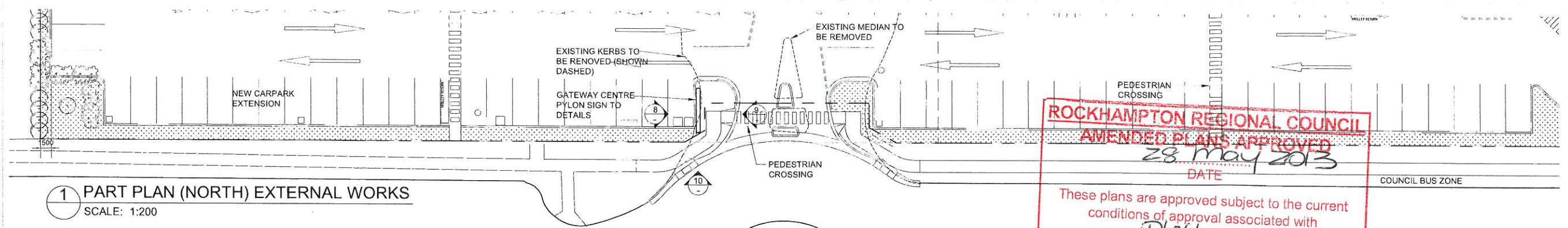
**Thomson Adsett**  
 128 Robertson Street  
 Fortitude Valley  
 PO Box 2195  
 Fortitude Valley BC Q 4006  
 Phone: (07) 3840 6999  
 Fax: (07) 3252 1201  
 Email: thomsonadsett.com  
 www.thomsonadsett.com

DATE	23/03/2011
SCALE	1:200@A1
PROJECT NO.	07N
DRAWING NO.	DA03
ISSUE	8

Thomson Adsett accept no responsibility for the usability, completeness or accuracy of scale, transfer or dimensionality. Resignation should where necessary, request a hard copy of the drawing for verification. The figured dimensions in preference to scale. All dimensions to be verified on site.  
 Copyright  
 These copyright drawings and the copyright therein are the property of Thomson Adsett Pty Ltd and shall not be used, in whole or in part, without the written permission of Thomson Adsett Pty Ltd. A.S.N. 19 100 244 834. Trading as Thomson Adsett.

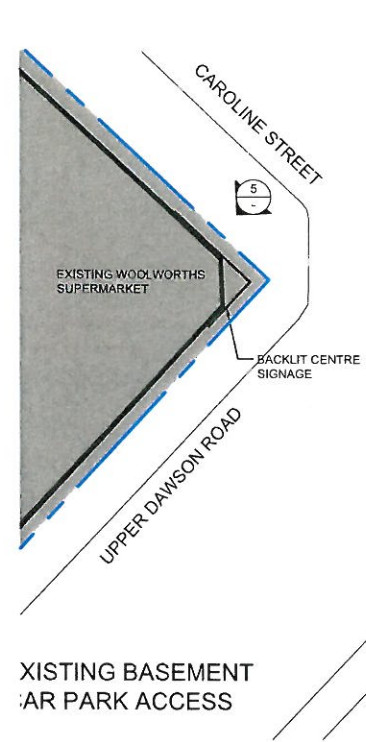
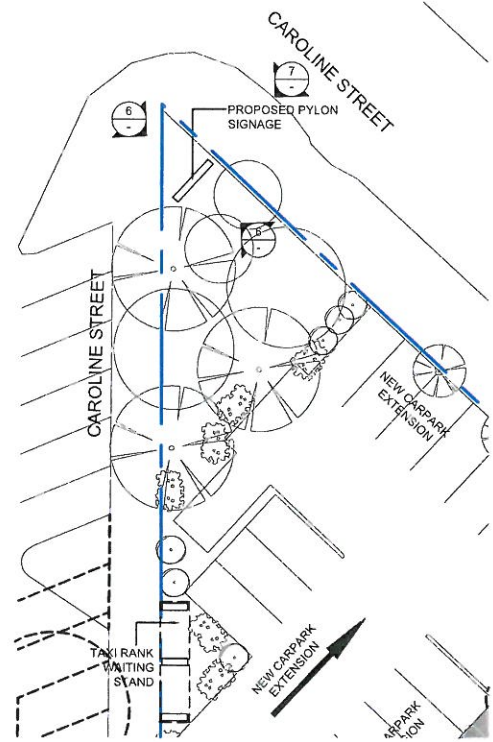
PROPRIETOR  
**Charter Hall Group**  
 Level 11 / 333 George Street  
 Sydney NSW 2000





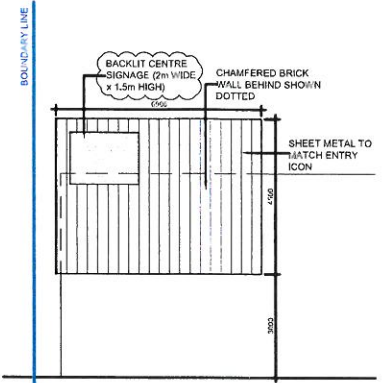
**ROCKHAMPTON REGIONAL COUNCIL**  
**AMENDED PLANS APPROVED**  
 28 May 2013  
 DATE  
 These plans are approved subject to the current conditions of approval associated with  
 D/366-2010 dated 29/7/2011  
 Development Permit No. ....

**1 PART PLAN (NORTH) EXTERNAL WORKS**  
 SCALE: 1:200

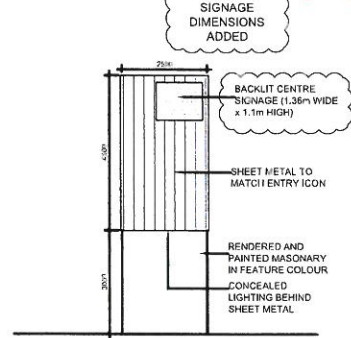


**2 PART PLAN (SOUTH CARPARK)**  
 SCALE: 1:200

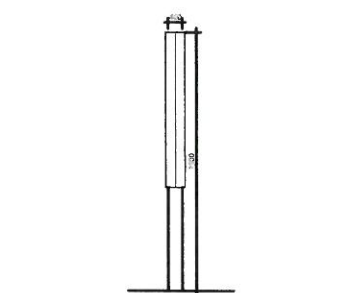
**3 PART PLAN (SOUTHWEST SIGNAGE)**  
 SCALE: 1:200



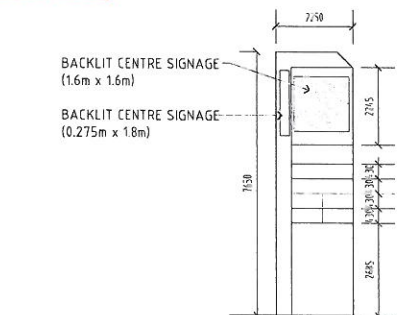
**5 FRONT ELEVATION (WALL SIGNAGE)**  
 SCALE: 1:100



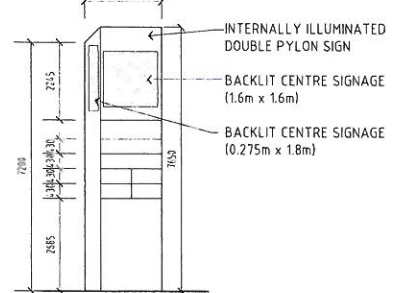
**6 FRONT ELEVATION (PYLON SIGNAGE)**  
 SCALE: 1:100



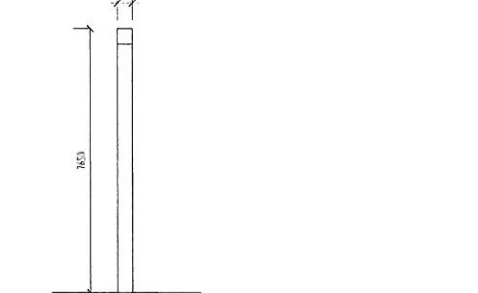
**7 SIDE ELEVATION (PYLON SIGNAGE)**  
 SCALE: 1:100



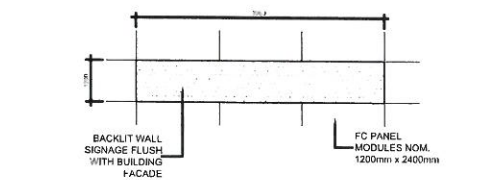
**8 FRONT ELEVATION (GATEWAY PYLON SIGNAGE)**  
 SCALE: 1:100



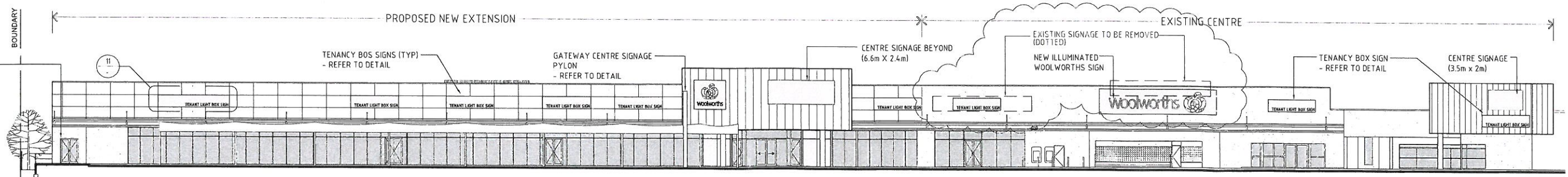
**9 REAR ELEVATION (GATEWAY PYLON SIGNAGE)**  
 SCALE: 1:100



**10 SIDE ELEVATION (GATEWAY PYLON SIGNAGE)**  
 SCALE: 1:100



**11 WALL SIGNAGE ELEVATION (TYPICAL OPTION)**  
 SCALE: 1:100



**4 STREET ELEVATION EXTERNAL WORKS**  
 SCALE: 1:200

ThomsonAdsett accept no responsibility for the usability, completeness or accuracy of electronic information. Recipients should, when necessary, request a hard copy version for verification. All figures and dimensions are in millimetres unless otherwise stated. All dimensions to be in millimetres.

© Copyright  
 These drawings and designs and the copyright therein are the property of ThomsonAdsett Pty Ltd and must not be used, copied or reproduced in any form without the written permission of ThomsonAdsett Pty Ltd, A.B.N. 76 105 316 654.  
 Drawing by ThomsonAdsett.

PROPRIETOR  
**Charter Hall Group**  
 Level 11 / 333 George Street  
 Sydney NSW 2000

**ALLENSTOWN PLAZA**  
 DERBY STREET  
 ROCKHAMPTON, QLD 4702  
 SIGNAGE AND EXTERNAL WORKS

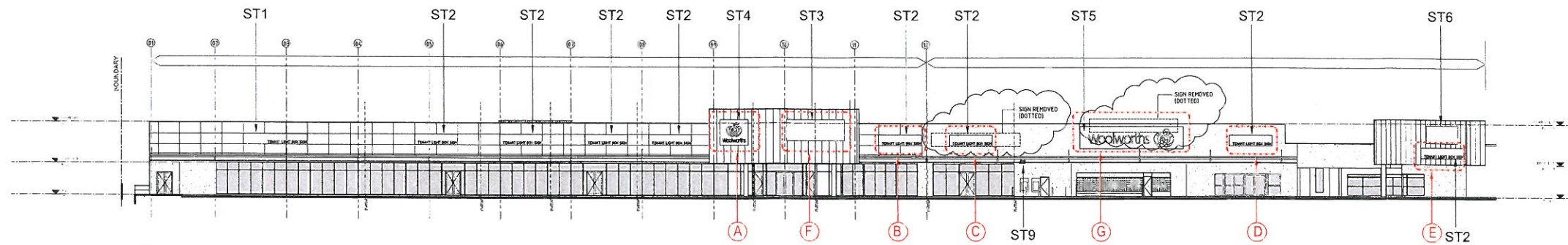
**ThomsonAdsett**  
 128 Robertson Street  
 Fortitude Valley  
 PO Box 2195  
 Fortitude Valley BC Q 4006  
 Phone: (07) 3840 9099  
 Fax: (07) 3252 1201  
 Email: info@thomsonadsett.com.au  
 www.thomsonadsett.com

DATE: 23/03/2011  
 SCALE: AS SHOWN @ A1  
 PROJECT NO.: 07N  
 DRAWING NO.: DA07  
 ISSUE: 10

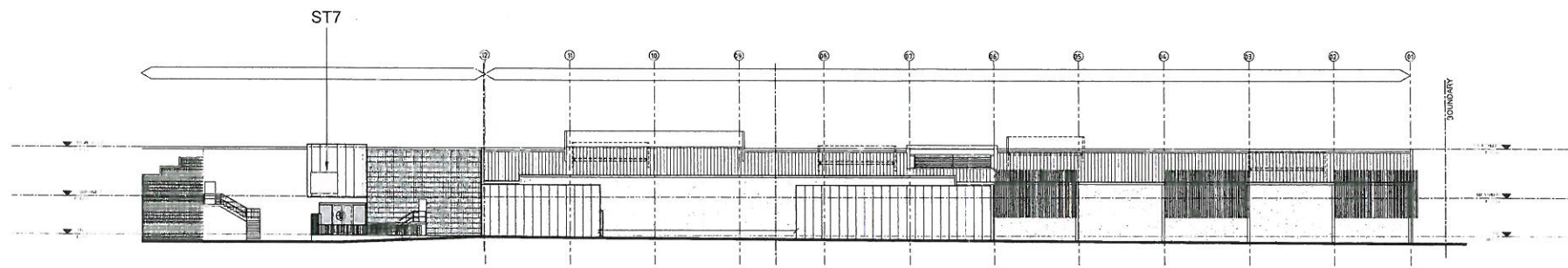
**A1**



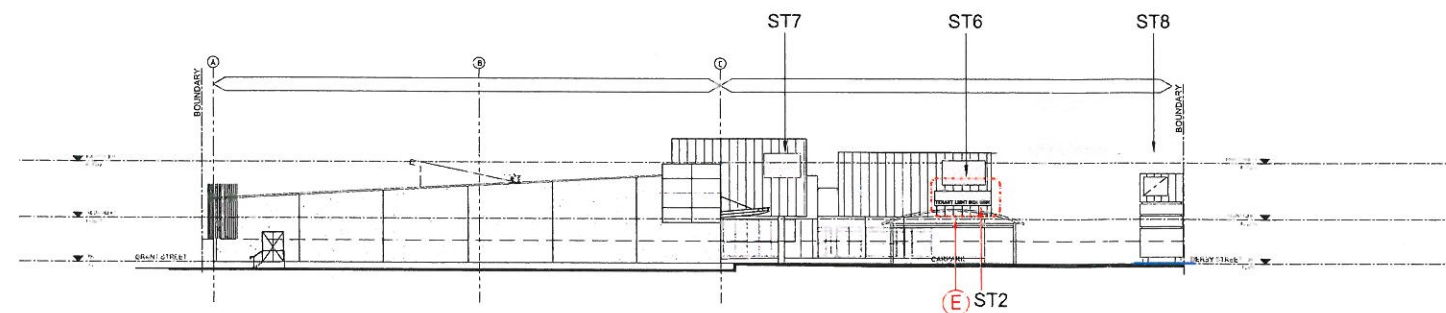
ADDITIONAL SIGNAGE			AMENDED SIGNAGE		
SIGN	TYPE	DESCRIPTION	SIGN	TYPE	DESCRIPTION
(A)	ST4	WOOLWORTHS VERTICAL SIGN 1500 SERIES 3215x2694mm	(F)	ST3	ALLENSTOWN PLAZA ILLUMINATED SIGN -AMENDED SIZE 6600x2400mm -ORIGINAL SIZE 3500x2000mm
(B)	ST2	TENANCY LIGHTBOX SIGN 4800x1200mm	(G)	ST5	WOOLWORTHS LIGHTBOX SIGN -AMENDED SIZE 11500x2500mm -ORIGINAL SIZE 10660x1265mm
(C)	ST2	TENANCY LIGHTBOX SIGN 4800x1200mm			
(D)	ST2	TENANCY LIGHTBOX SIGN 4800x1200mm			
(E)	ST2	TENANCY LIGHTBOX SIGN 4800x1200mm			



1 North-West Elevation  
1 : 200



2 South-East Elevation  
1 : 200



3 North-East Elevation  
1 : 200

**ROCKHAMPTON REGIONAL COUNCIL**  
**AMENDED PLANS APPROVED**  
 28 May 2013  
 DATE  
 These plans are approved subject to the current  
 conditions of approval associated with  
 Development Permit No. D/366-2010 dated 29/7/2013

REV	DATE	DESCRIPTION	BY
1	03/03/12	ISSUED FOR PERMIT	PL
2	03/03/12	REVISED PERMIT	PL
3	03/03/12	REVISED PERMIT	PL
4	03/03/12	REVISED PERMIT	PL
5	03/03/12	REVISED PERMIT	PL
6	03/03/12	REVISED PERMIT	PL
7	03/03/12	REVISED PERMIT	PL
8	03/03/12	REVISED PERMIT	PL

- LEGEND**
- P1 SMALL CARS ONLY
  - P2 THANK-YOU FOR SHOPPING AT ALLENSTOWN PLAZA
  - P3 STAFF PARKING
  - P4 DISABLED PARKING
  - P5 TAXI
  - P6 UNDERGROUND PARKING
  - P7 AUTHORISED PERSONEL ONLY
  - TR TROLLEY RETURN
  - ST1 TENANCY LIGHTBOX SIGN 7200x1200mm
  - ST2 TENANCY LIGHTBOX SIGN 4800x1200mm
  - ST3 ALLENSTOWN PLAZA ILLUMINATED SIGN 6600x2400mm
  - ST4 WOOLWORTHS VERTICAL SIGN 1500 SERIES 3215x2694mm
  - ST5 ILLUMINATED WOOLWORTHS SIGN 11500x2500mm
  - ST6 ALLENSTOWN PLAZA ILLUMINATED SIGN 3500x2000mm
  - ST7 ALLENSTOWN PLAZA ILLUMINATED SIGN 2500x2000mm
  - ST8 PYLON SIGN
  - ST9 ILLUMINATED ATM SIGN
  - M56 DIRECTORY SIGNAGE - FLOOR MOUNTED BY OTHERS - TBC
  - B1-7 BRAKE - TO AUSTRALIA STANDARDS
  - A1-7 BLADE SIGN - CANTILEVERED OVERHEAD
  - D1-40 DOOR SIGNAGE
  - SL1 LOADING BAY 01 - SPECIALTIES
  - SL2 LOADING BAY 02 - SPECIALTIES
  - SL3 LOADING BAY 03 - SPECIALTIES
  - SL4 LOADING BAY 04 - WOOLWORTHS
  - T TENANCY NUMBER SIGNAGE

ALL SIGNAGE TO BE CONFIRMED WITH STATUTORY REQUIREMENTS.

Thomson Adsett Pty Ltd (in liquidation) is not responsible for the accuracy of data provided and does not warrant the accuracy of data provided and does not warrant the accuracy of data provided and does not warrant the accuracy of data provided.

**Thomson Adsett**  
 12 Fleet Lane  
 South Brisbane  
 PO Box 3348  
 South Brisbane Q 4101  
 Phone: (07) 3840 9999  
 Fax: (07) 3846 3672  
 Email: thomsonadsett@thomsonadsett.com  
 www.thomsonadsett.com

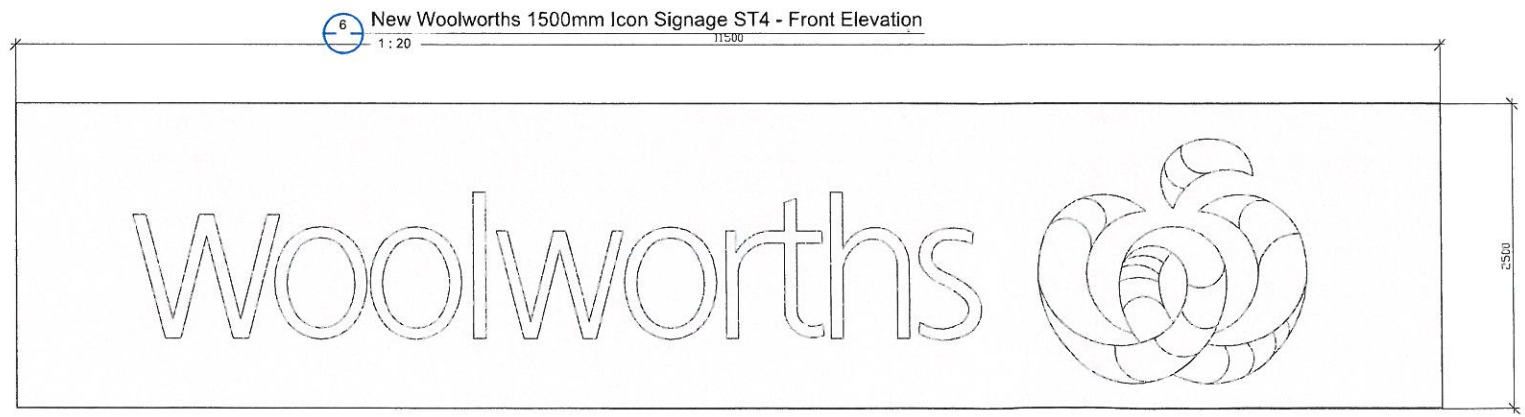
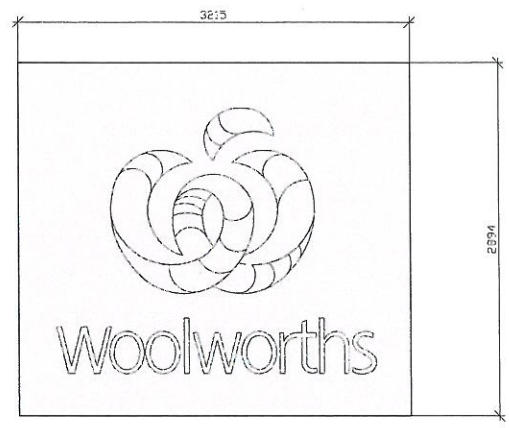
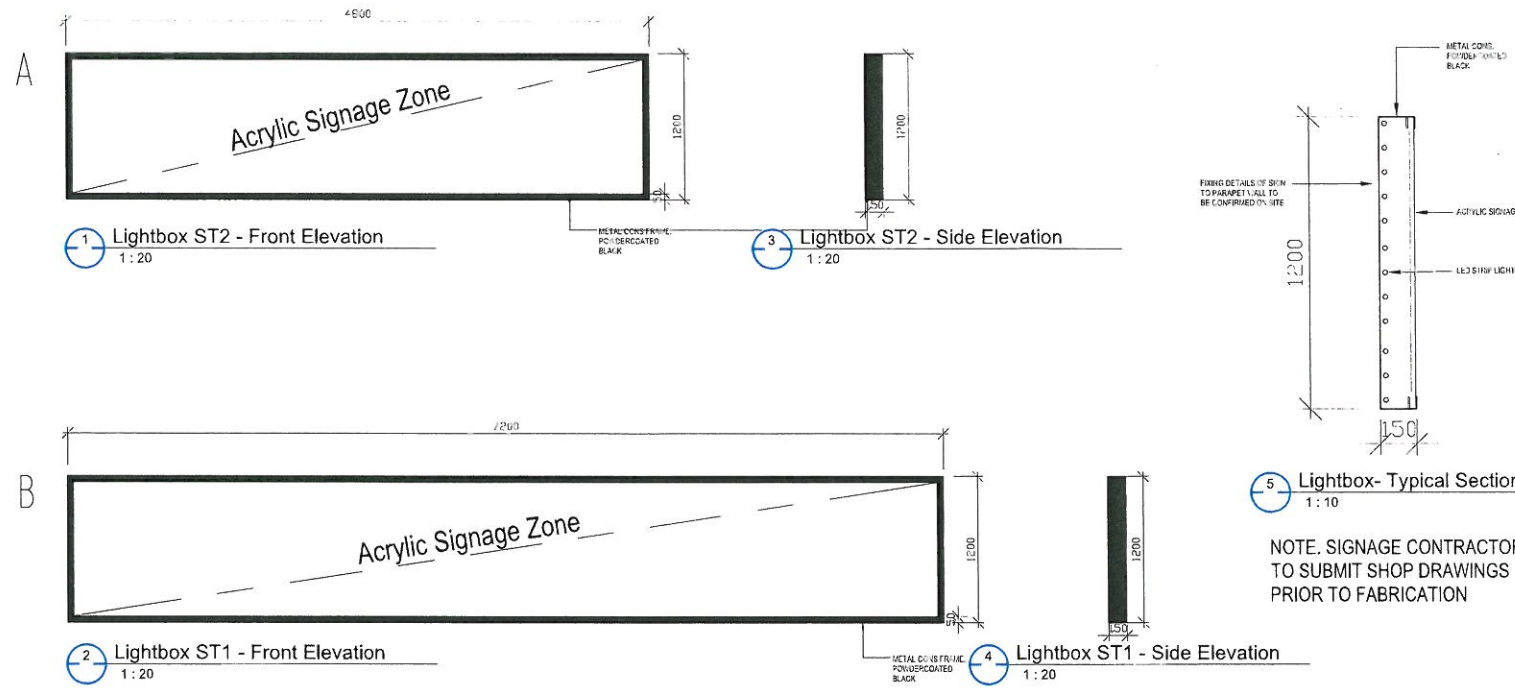
**ALLENSTOWN PLAZA**  
 Retail Extension

Derby Street,  
 Rockhampton

Charter Hall Group  
 PROJECT

EXTERNAL ELEVATION  
 SIGNAGE

sheet	date	scale	drawn	checked	verified
10837	March 2012	1:25 @ 1/10			
10837	A703	F			



**ROCKHAMPTON REGIONAL COUNCIL**  
**AMENDED PLANS APPROVED**  
 28. May 2013  
 DATE  
 These plans are approved subject to the current  
 conditions of approval associated with  
 D/366-2010 dated 29/7/2011.  
 Development Permit No. .... dated .....

rev.	date	details	pa.in
1	2012	Issue for approval	PL
2	2013	Amended plans approved	PL

**LEGEND**

- P1 SMALL CARS ONLY
- P2 THANK-YOU FOR SHOPPING AT ALLENSTOWN PLAZA
- P3 STAFF PARKING
- P4 DISABLED PARKING
- P5 TAXI
- P6 UNDERGROUND PARKING
- P7 AUTHORISED PERSONEL ONLY
- TR TROLLEY RETURN
- ST1 TENANCY LIGHTBOX SIGN 720x1200mm
- ST2 TENANCY LIGHTBOX SIGN 480x1200mm
- ST3 ALLENSTOWN PLAZA ILLUMINATED SIGN 480x2400mm
- ST4 WOOLWORTHS VERTICAL SIGN 1500 SERIES 3215x2394mm
- ST5 WOOLWORTHS HORIZONTAL SIGN 1500 SERIES 8775x1875mm
- ST6 ALLENSTOWN PLAZA ILLUMINATED SIGN 2500x2500mm
- ST7 ALLENSTOWN PLAZA ILLUMINATED SIGN 2500x2000mm
- ST8 PYLON SIGN
- MS6 DIRECTORY SIGNAGE - FLOOR MOUNTED BY OTHERS - TBC
- B1-7 BRAILLE - TO AUSTRALIA STANDARDS
- A1-7 BLADE SIGN - CANTILEVERED OVERHEAD
- D1-40 DOOR SIGNAGE
- SL1 LOADING BAY 01 - SPECIALTIES
- SL2 LOADING BAY 02 - SPECIALTIES
- SL3 LOADING BAY 03 - SPECIALTIES
- SL4 LOADING BAY 04 - WOOLWORTHS
- T TENANCY NUMBER SIGNAGE

ALL SIGNAGE TO BE CONFIRMED WITH STATUTORY REQUIREMENTS.

ThomsonAdsett assumes no responsibility for the use of, or compliance with, any of the information contained in this document. The client should check any necessary requirements for verification. Use figures and drawings for reference to scale. All dimensions to be used as shown.

© Copyright  
These drawings or designs and the copyright therein are the property of ThomsonAdsett Pty Ltd and must not be used, copied or reproduced without the written permission of ThomsonAdsett Pty Ltd, a B.S. 15 102 214 004.  
Trading as ThomsonAdsett.

**ThomsonAdsett**

12 Fleet Lane  
 South Brisbane Phone: (07) 3640 9999  
 PO Box 3348 Fax: (07) 3646 3672  
 South Brisbane Q 4101 Email: sa@thomsonadsett.com  
 www.thomsonadsett.com

**ALLENSTOWN PLAZA**  
 Retail Extension

Derby Street,  
 Rockhampton

Charter Hall Group  
 project

PARAPET LIGHTBOX SIGN

sheet	date: March 2012
10837	scale: 1:20
project no.	drawn:
A706	checked:
D	verified:
sheet no.	revision: