

SHEET SCHEDULE			
DRAWING NO.	REV.	DATE	DRAWING TITLE
SIGN01	A	13.02.2025	SIGNAGE PACK COVER PAGE
SIGN02	A	13.02.2025	SIGNAGE LOCATION PLAN
SIGN03	A	13.02.2025	SIGNAGE PACK EXTERNAL ELEVATIONS
SIGN04	A	13.02.2025	SIGNAGE PACK EXTERNAL ELEVATIONS
SIGN05	A	13.02.2025	SIGNAGE PACK CANOPY ELEVATIONS
SIGN06	A	13.02.2025	SIGNAGE DETAILS 1
SIGN07	A	13.02.2025	SIGNAGE DETAILS 2
SIGN08	A	13.02.2025	SIGNAGE DETAILS 3
SIGN09	A	13.02.2025	SIGNAGE DETAILS 4
SIGN10	A	13.02.2025	SIGNAGE DETAILS 5



**4372**  
**ROCKHAMPTON CENTRAL**  
 369 Yaamba Road, Park Avenue QLD, Australia  
 SIGNAGE PACK

**ROCKHAMPTON REGIONAL COUNCIL**

**AMENDED PLANS APPROVED**

**27 March 2025**

DATE

These plans are approved subject to the current conditions of approval associated with

**Development Permit No.: D/12-2015**

**Dated: 13 February 2015**



**Status APPROVAL ISSUE**

7-ELEVEN STORES PTY. LTD. ABN 48 005 299 427  
 TEL: (03) 9541 0711 FAX: (03) 9965 1954  
 BUILDING 2, 658 CHURCH STREET  
 RICHMOND, VICTORIA 3121  
 AUSTRALIA

**Revision**

REV	AMENDMENTS	DATE	BY
A	SIGNAGE PACK	13.02.2025	SM

**Project**

**ROCKHAMPTON CENTRAL**  
 369 Yaamba Road, Park Avenue QLD,  
 Australia  
 SIGNAGE PACK

All dimensions are in millimeters. Verify all dimensions on site prior to commencement of any work. Do not scale off drawings. Copyright remains property of this office.

**Scale @ A3**

**Drawn SM**

**Date 17/02/2025 2:54:41 PM**

**Drawing**

**SIGNAGE PACK COVER PAGE**

**Store No.**

**4372**

**Revision**

**A**

**Drawing No.**

**SIGN01**

NEW S3 DIRECTIONAL SIGNAGE REFER TO SIGNAGE DETAILS

BOLAND STREET

EXISTING CROSSING

VINYL DECAL APPLIED TO NEW FASCIA AROUND BUILDING. REFER TO DETAIL S30A

INTERNALLY ILLUMINATED LIGHTBOX SURFACE MOUNTED TO EXISTING BUILDING SURFACE. REFER TO S31.

LOCATION OF S4 INTERNALLY ILLUMINATED LOGOS TO CANOPY FASCIA REFER TO SIGNAGE DETAIL

LOCATION OF NEW DIRECTIONAL SIGNAGE REFER TO S3

**1** PROPOSED SITE PLAN Copy 1  
SIGN02 1:250

60350 329°25'30" SITE BOUNDARY

DELIVERY ZONE

7-ELEVEN STORE  
BUILDING 236m<sup>2</sup> APPROX.

FUEL CANOPY

BRUCE HIGHWAY YAMBA ROAD

EXISTING LPG TANK

EXISTING LPG TANK

**ROCKHAMPTON REGIONAL COUNCIL**

**AMENDED PLANS APPROVED**

**27 March 2025**

**DATE**

These plans are approved subject to the current conditions of approval associated with

**Development Permit No.: D/12-2015**

**Dated: 13 February 2015**

WRAP CANOPY FASCIA IN NEW ACM. NEW S4 STRIPING TO ALL CANOPY FASCIAS REFER TO SIGNAGE DETAIL

PROPOSED NEW ILLUMINATED 8M HIGH PYLON SIGN REFER TO S1 SIGNAGE DETAIL

LOCATION OF S4 INTERNALLY ILLUMINATED LOGOS TO CANOPY FASCIA REFER TO SIGNAGE DETAIL

LOCATION OF S4 INTERNALLY ILLUMINATED LOGOS TO CANOPY FASCIA REFER TO SIGNAGE DETAIL

1 SIGN03 1 SIGN05



Status APPROVAL ISSUE

7-ELEVEN STORES PTY. LTD. ABN 48 005 299 427  
TEL: (03) 9541 0711 FAX: (03) 9965 1954  
BUILDING 2, 658 CHURCH STREET  
RICHMOND, VICTORIA 3121  
AUSTRALIA

Revision

REV	AMENDMENTS	DATE	BY
A	SIGNAGE PACK	13.02.2025	SM

Project

ROCKHAMPTON CENTRAL  
369 Yaamba Road, Park Avenue QLD,  
Australia  
SIGNAGE PACK

Scale @ A3 1:250

Drawn SM

Date 17/02/2025 2:54:42 PM

Drawing

**SIGNAGE LOCATION PLAN**

Store No.

**4372**

Revision

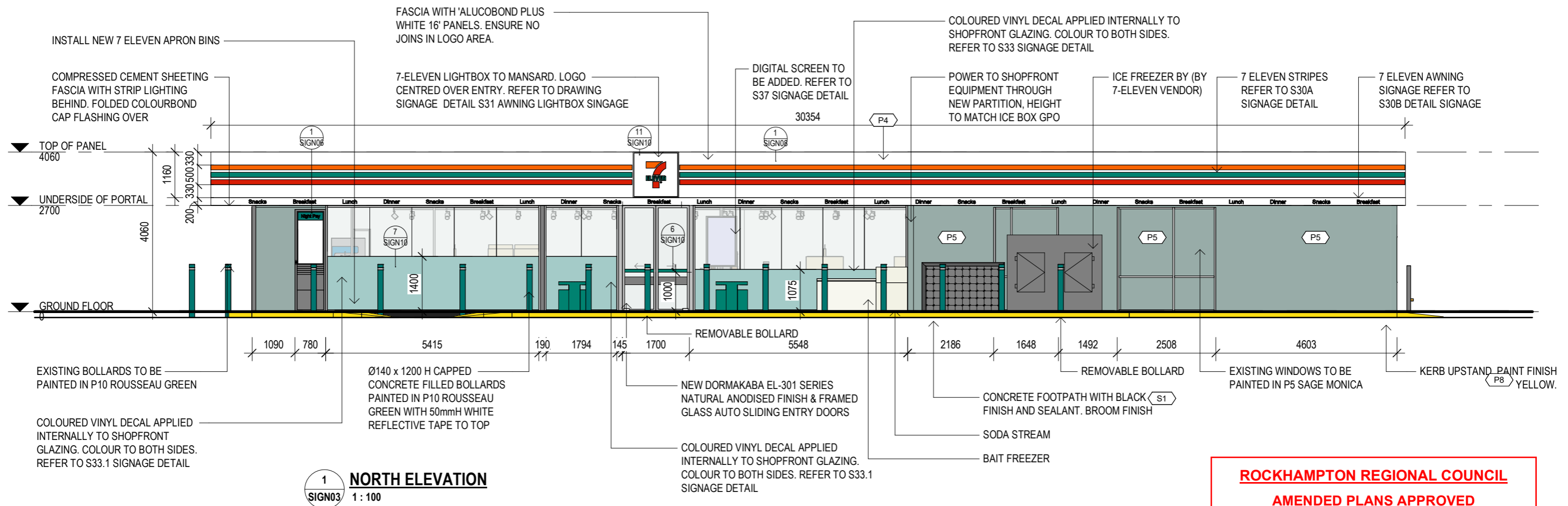
**A**

Drawing No.

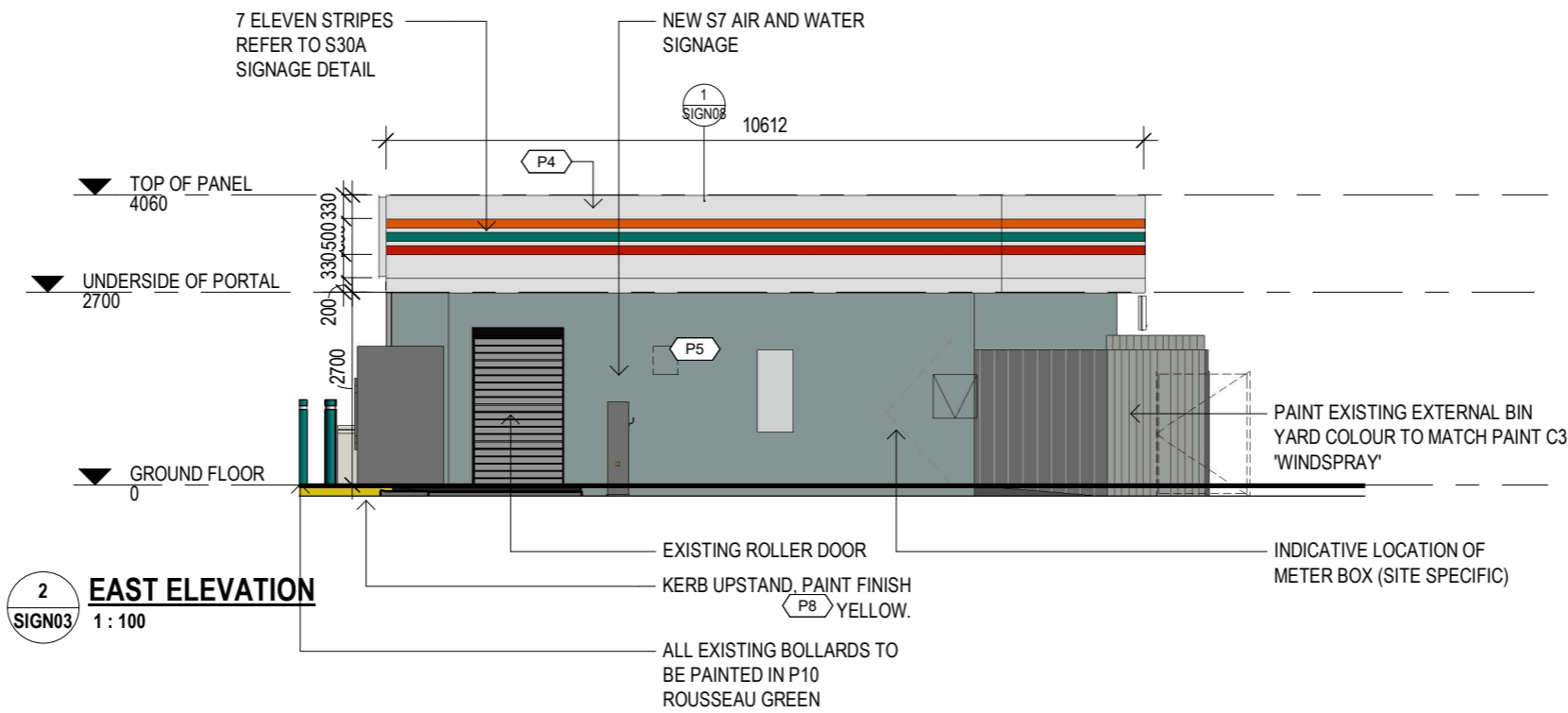
**SIGN02**

All dimensions are in millimeters. Verify all dimensions on site prior to commencement of any work. Do not scale off drawings. Copyright remains property of this office.

C:\Users\sheridan.mills\OneDrive - 7-Eleven Stores Pty Ltd\Documents\7 Eleven\Rockhampton\4372-ROCKHAMPTON\_SIGNAGE PACK 13.02.25.rvt



**1 NORTH ELEVATION**  
SIGN03 1 : 100



**2 EAST ELEVATION**  
SIGN03 1 : 100

**ROCKHAMPTON REGIONAL COUNCIL**  
**AMENDED PLANS APPROVED**  
**27 March 2025**  
**DATE**

These plans are approved subject to the current conditions of approval associated with  
**Development Permit No.: D/12-2015**  
**Dated: 13 February 2015**

- GENERAL NOTES**
1. TO BE READ IN CONJUNCTION WITH SIGNAGE DETAILS
  2. ALL 7-ELEVEN SIGNAGE / BRANDING TO BE SUPPLIED AND INSTALLED BY 7-ELEVEN UNLESS OTHERWISE NOTED
  3. TO BE READ IN CONJUNCTION WITH STRUCTURAL ENGINEER'S DRAWING FOR PANELS AND POSTS
  4. WHERE COOLROOM IS LOCATED AGAINST PRECAST EXTERIOR WALL, CORE HOLE TO BE PROVIDED
  5. ALL WORKS TO BE COMPLETED BY LESSOR UNLESS OTHERWISE NOTED
  6. TO BE READ IN CONJUNCTION WITH FINISHES SCHEDULE

NOTE: ALL DIMENSIONS TO BE CONFIRMED ON SITE



**Status** APPROVAL ISSUE

7-ELEVEN STORES PTY. LTD. ABN 48 005 299 427  
TEL: (03) 9541 0711 FAX: (03) 9965 1954  
BUILDING 2, 658 CHURCH STREET  
RICHMOND, VICTORIA 3121  
AUSTRALIA

REV	AMENDMENTS	DATE	BY
A	SIGNAGE PACK	13.02.2025	SM

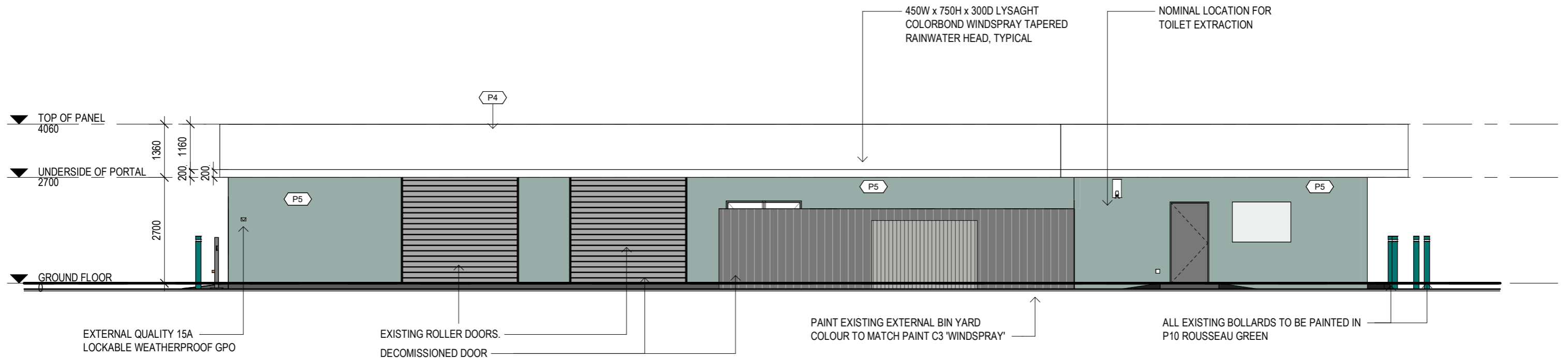
**Project**  
**ROCKHAMPTON CENTRAL**  
369 Yaamba Road, Park Avenue QLD,  
Australia  
SIGNAGE PACK

All dimensions are in millimeters. Verify all dimensions on site prior to commencement of any work. Do not scale off drawings. Copyright remains property of this office.

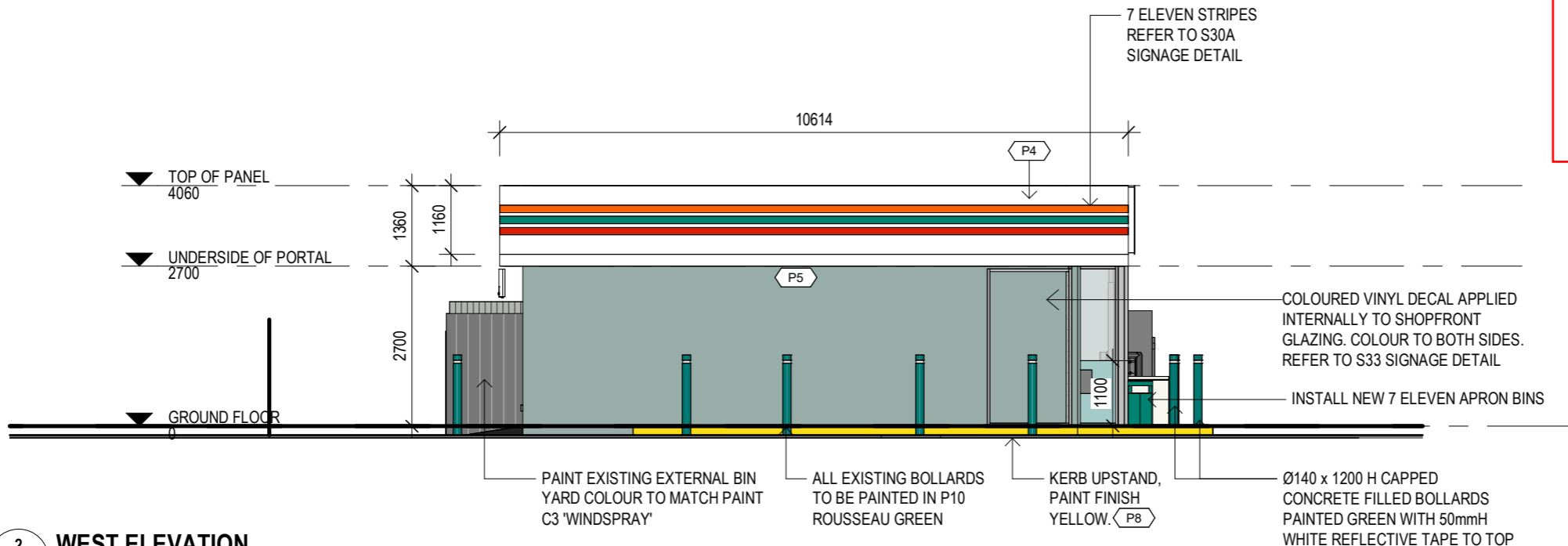
Scale @ A3 1 : 100      Drawn SM      Date 17/02/2025 2:54:46 PM

Drawing  
**SIGNAGE PACK EXTERNAL ELEVATIONS**

Store No. **4372**      Revision **A**      Drawing No. **SIGN03**



**1 SOUTH ELEVATION**  
SIGN04 1 : 100



**2 WEST ELEVATION**  
SIGN04 1 : 100

**ROCKHAMPTON REGIONAL COUNCIL**  
**AMENDED PLANS APPROVED**  
**27 March 2025**  
-----  
**DATE**  
-----  
These plans are approved subject to the current conditions of approval associated with  
**Development Permit No.: D/12-2015**  
-----  
**Dated: 13 February 2015**

- GENERAL NOTES**
1. TO BE READ IN CONJUNCTION WITH SIGNAGE DETAILS
  2. ALL 7-ELEVEN SIGNAGE / BRANDING TO BE SUPPLIED AND INSTALLED BY 7-ELEVEN UNLESS OTHERWISE NOTED
  3. TO BE READ IN CONJUNCTION WITH STRUCTURAL ENGINEER'S DRAWING FOR PANELS AND POSTS
  4. WHERE COOLROOM IS LOCATED AGAINST PRECAST EXTERIOR WALL, CORE HOLE TO BE PROVIDED
  5. ALL WORKS TO BE COMPLETED BY LESSOR UNLESS OTHERWISE NOTED
  6. TO BE READ IN CONJUNCTION WITH FINISHES SCHEDULE

NOTE: ALL DIMENSIONS TO BE CONFIRMED ON SITE



**Status APPROVAL ISSUE**

7-ELEVEN STORES PTY. LTD. ABN 48 005 299 427  
TEL: (03) 9541 0711 FAX: (03) 9965 1954  
BUILDING 2, 658 CHURCH STREET  
RICHMOND, VICTORIA 3121  
AUSTRALIA

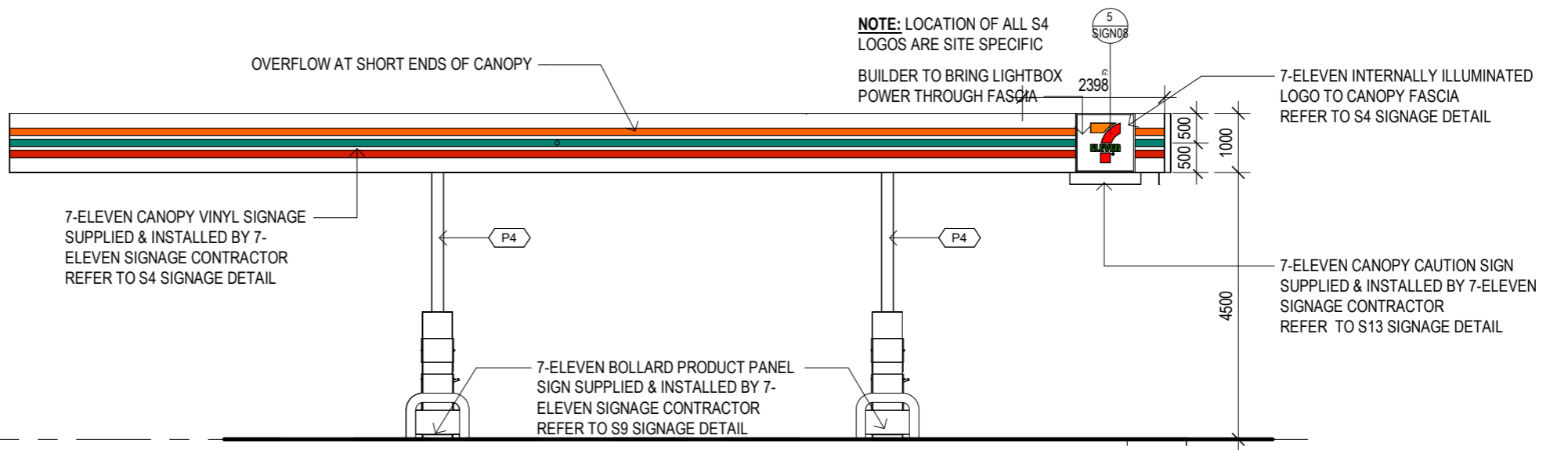
Revision			
REV	AMENDMENTS	DATE	BY
A	SIGNAGE PACK	13.02.2025	SM

**Project**  
**ROCKHAMPTON CENTRAL**  
369 Yaamba Road, Park Avenue QLD,  
Australia  
SIGNAGE PACK  
All dimensions are in millimeters. Verify all dimensions on site prior to commencement of any work. Do not scale off drawings. Copyright remains property of this office.

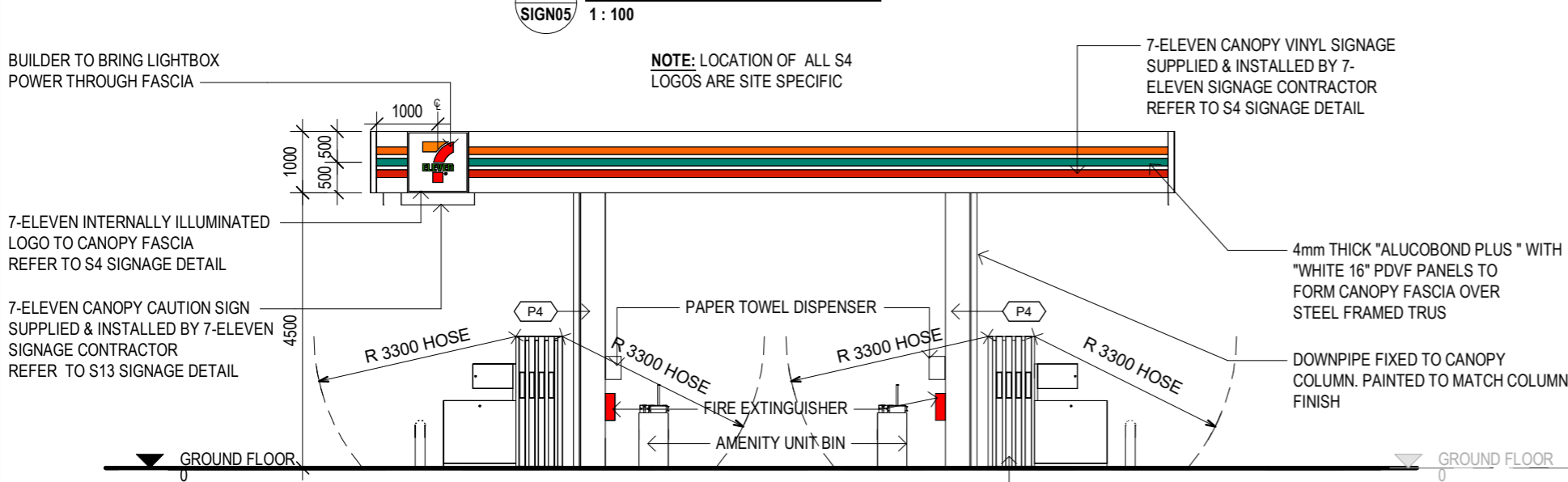
Scale @ A3 1 : 100      Drawn SM      Date 17/02/2025 2:54:49 PM

**Drawing**  
**SIGNAGE PACK EXTERNAL ELEVATIONS**

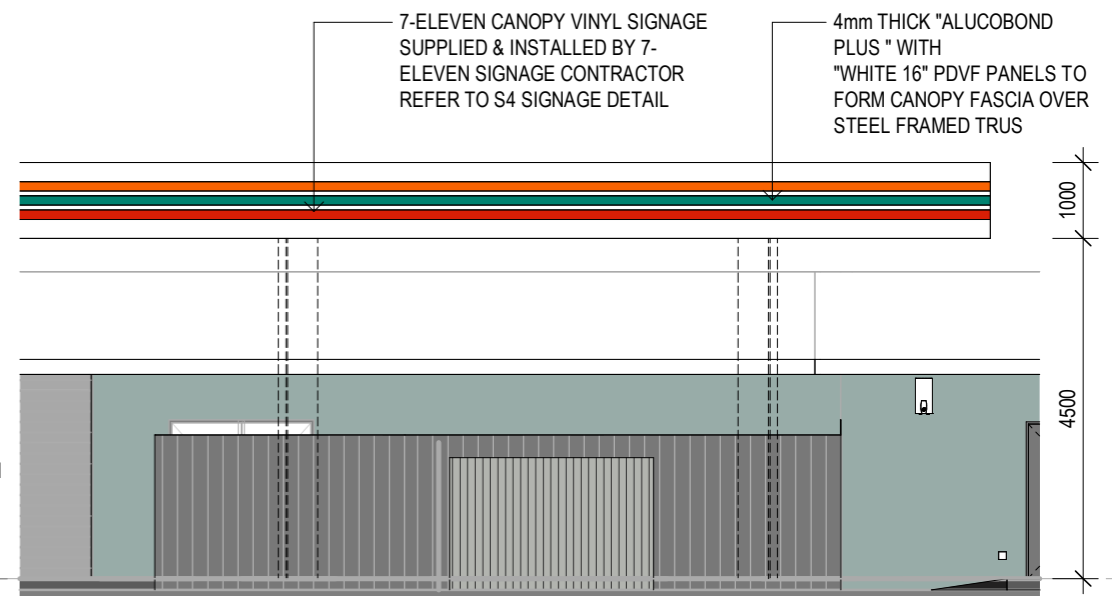
Store No. **4372**      Revision **A**      Drawing No. **SIGN04**



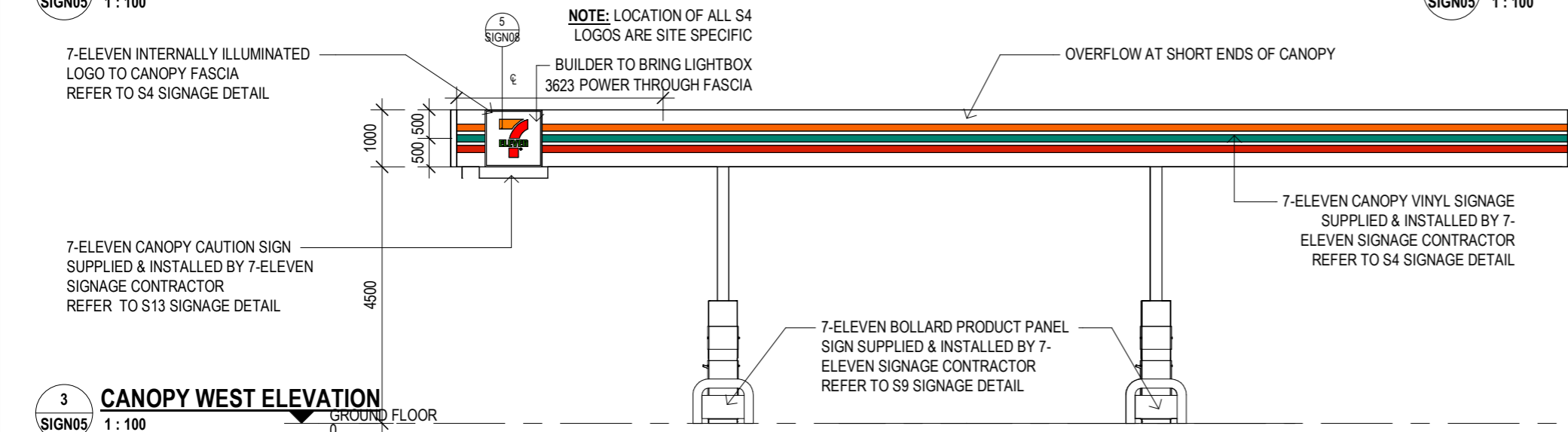
**2 CANOPY EAST ELEVATION**  
SIGN05 1:100



**1 CANOPY NORTH ELEVATION**  
SIGN05 1:100



**4 CANOPY SOUTH ELEVATION**  
SIGN05 1:100



**3 CANOPY WEST ELEVATION**  
SIGN05 1:100

**ROCKHAMPTON REGIONAL COUNCIL**  
**AMENDED PLANS APPROVED**  
**27 March 2025**  
**DATE**

These plans are approved subject to the current conditions of approval associated with  
**Development Permit No.: D/12-2015**  
**Dated: 13 February 2015**



**Status APPROVAL ISSUE**

7-ELEVEN STORES PTY. LTD. ABN 48 005 299 427  
TEL: (03) 9541 0711 FAX: (03) 9965 1954  
BUILDING 2, 658 CHURCH STREET  
RICHMOND, VICTORIA 3121  
AUSTRALIA

REV	AMENDMENTS	DATE	BY
A	SIGNAGE PACK	13.02.2025	SM

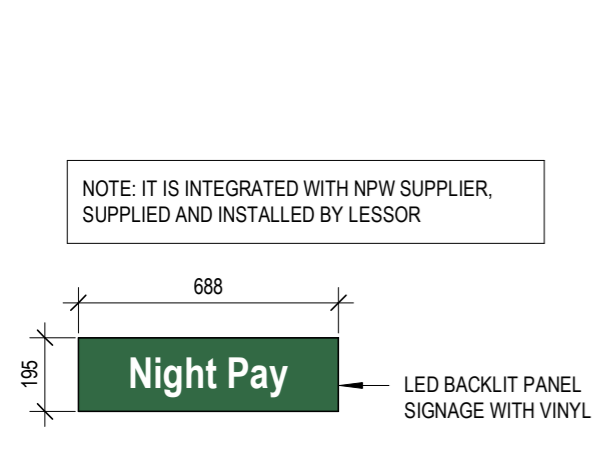
**Project**  
**ROCKHAMPTON CENTRAL**  
369 Yaamba Road, Park Avenue QLD,  
Australia  
SIGNAGE PACK

All dimensions are in millimeters. Verify all dimensions on site prior to commencement of any work. Do not scale off drawings. Copyright remains property of this office.

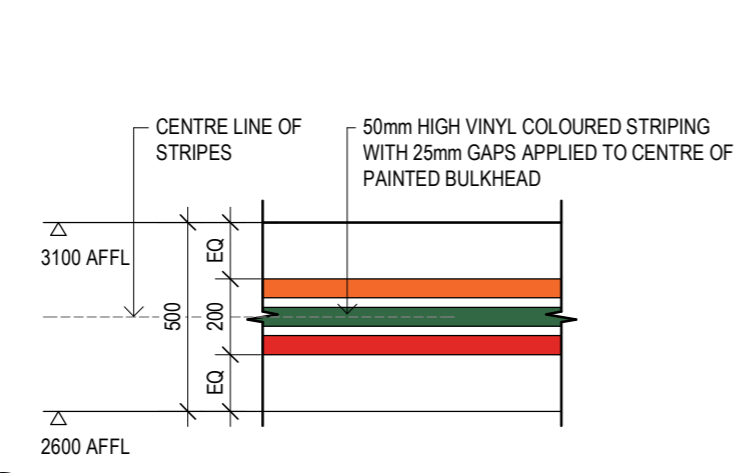
Scale @ A3 1:100      Drawn SM      Date 17/02/2025 2:54:52 PM

Drawing  
**SIGNAGE PACK CANOPY ELEVATIONS**

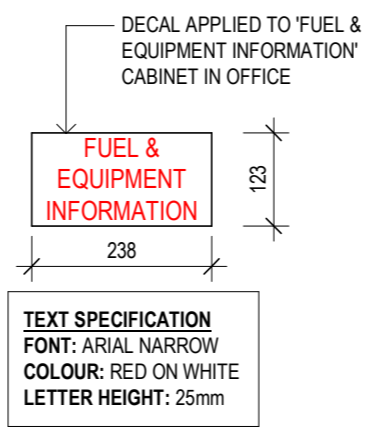
Store No. **4372**      Revision **A**      Drawing No. **SIGN05**



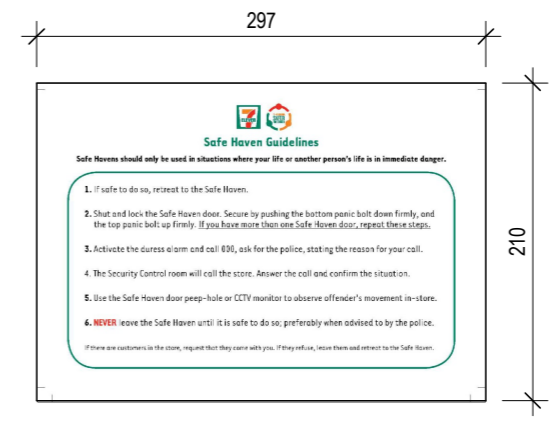
1 **S38 TYPICAL NPW SIGN**  
SIGN06 1:20



2 **S40 TYPICAL INTERNAL WALL STRIPING**  
SIGN06 1:20



4 **S42 FUEL & EQUIP. DECAL**  
SIGN06 1:10

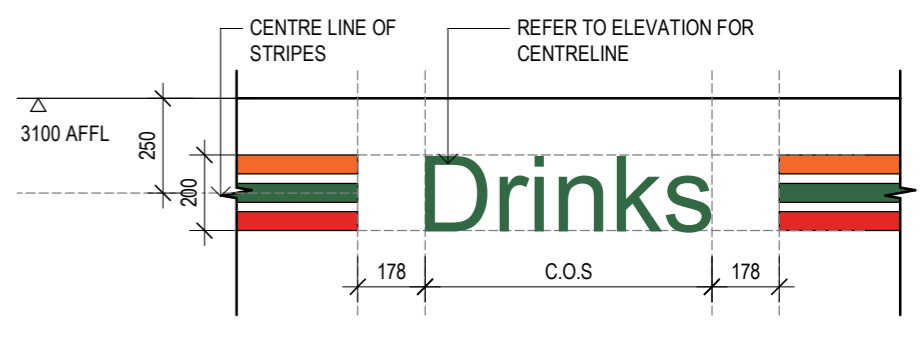
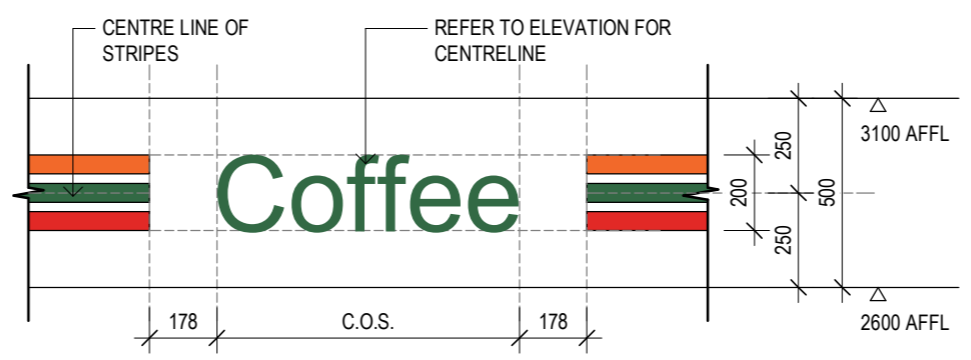
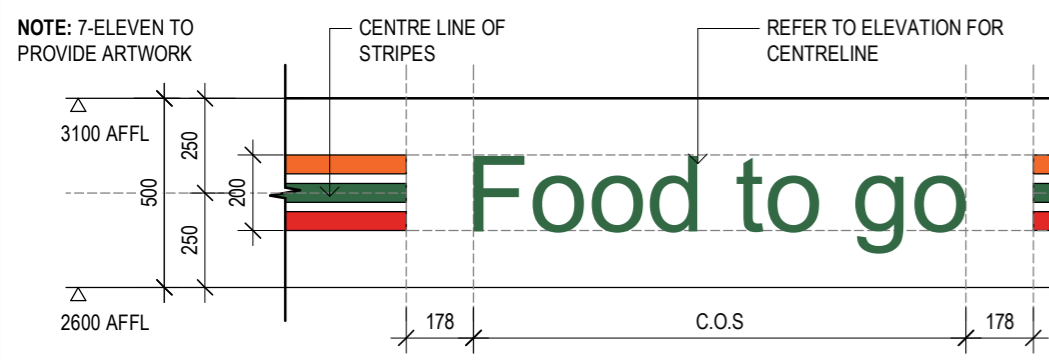


5 **S43 SAFE HAVEN DECAL (A4 SIZE)**  
SIGN06 1:5

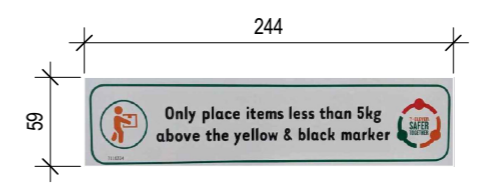
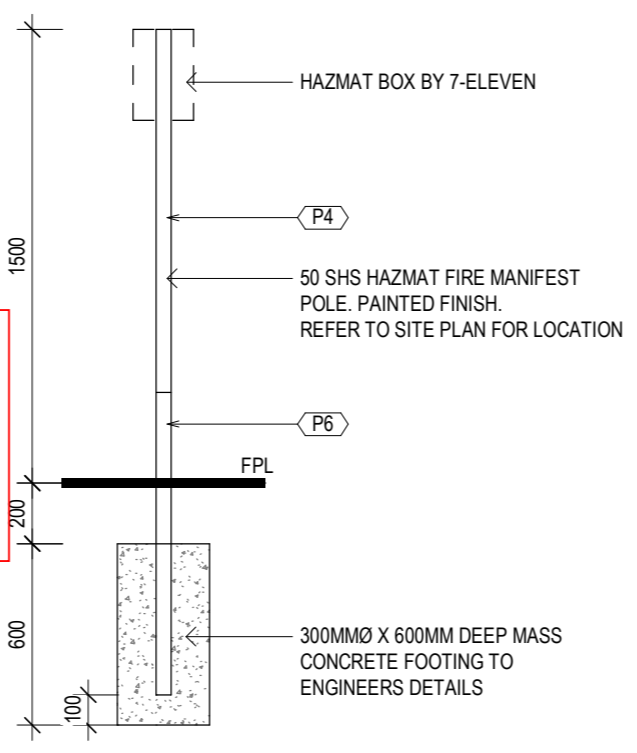
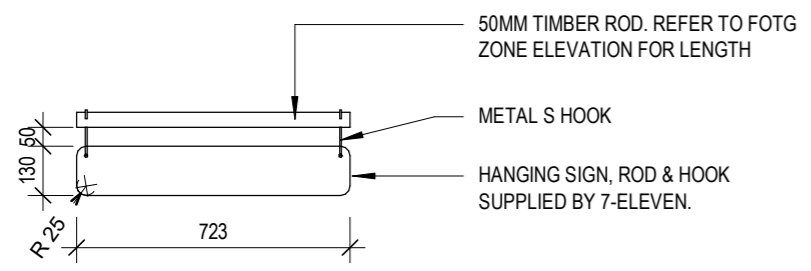
NOTE:  
50MM HIGH BLACK/YELLOW HAZARD MARKING TAPE. TOP OF TAPE TO BE INSTALLED AT 1500MM ABOVE FINISHED FLOOR LEVEL.  
TYPE: 3M HAZARD WARNING TAPE 766 OR SIMILAR.



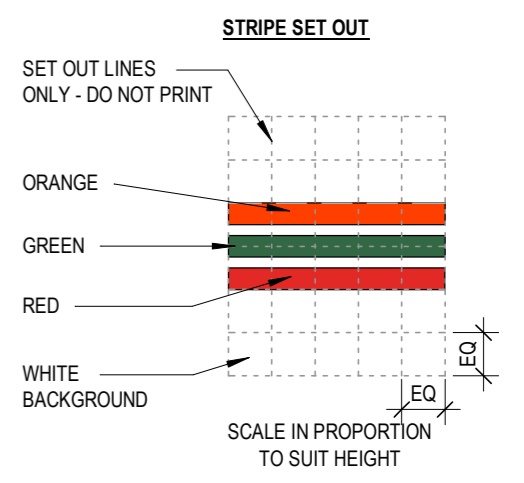
6 **S44 HAZARD MARKING TAPE**  
SIGN06 1:10



3 **S40B TYPICAL INTERNAL WALL STRIPING SIGNAGE**  
SIGN06 1:20



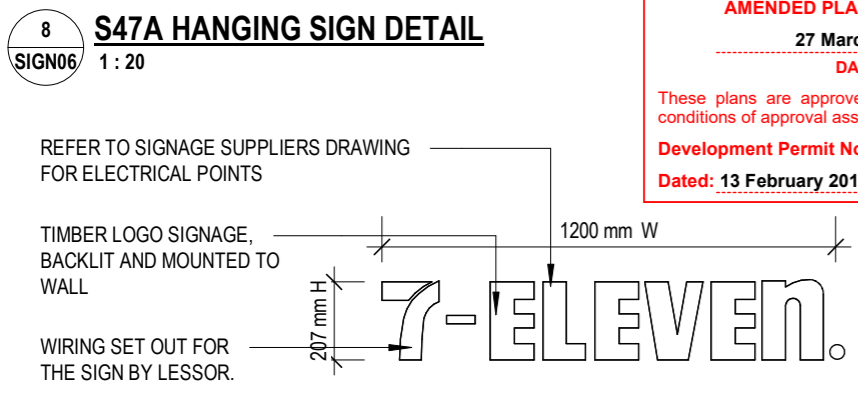
7 **S45 5KG ITEM WARNING DECAL**  
SIGN06 1:5



COLOUR LEGEND			
COLOUR	PANTONE	3M COLOUR REF.	
		NO ILLUM.	ILLUM.
ORANGE	PMS 021C	7725-14	3630-44
GREEN	PMS 3425C	7725-56	3630-26
RED	PMS 200C	7725-63	3630-73

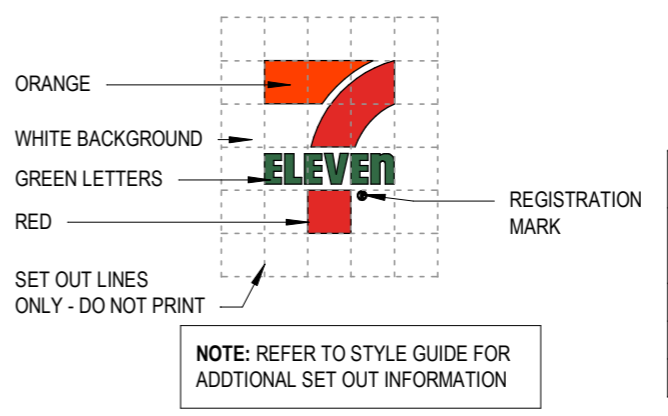
REFER TO 7-ELEVEN STYLE GUIDE FOR FURTHER DETAILS

**ROCKHAMPTON REGIONAL COUNCIL**  
AMENDED PLANS APPROVED  
27 March 2025  
DATE  
These plans are approved subject to the current conditions of approval associated with  
Development Permit No.: D/12-2015  
Dated: 13 February 2015



8 **S47A HANGING SIGN DETAIL**  
SIGN06 1:20

10 **S55 HAZMAT BOX DETAIL**  
SIGN06 1:25



11 **S90 STANDARD 7-ELEVEN SQUARE LOGO**  
SIGN06 N.T.S

Status APPROVAL ISSUE

7-ELEVEN STORES PTY. LTD. ABN 48 005 299 427  
TEL: (03) 9541 0711 FAX: (03) 9965 1954  
BUILDING 2, 658 CHURCH STREET  
RICHMOND, VICTORIA 3121  
AUSTRALIA

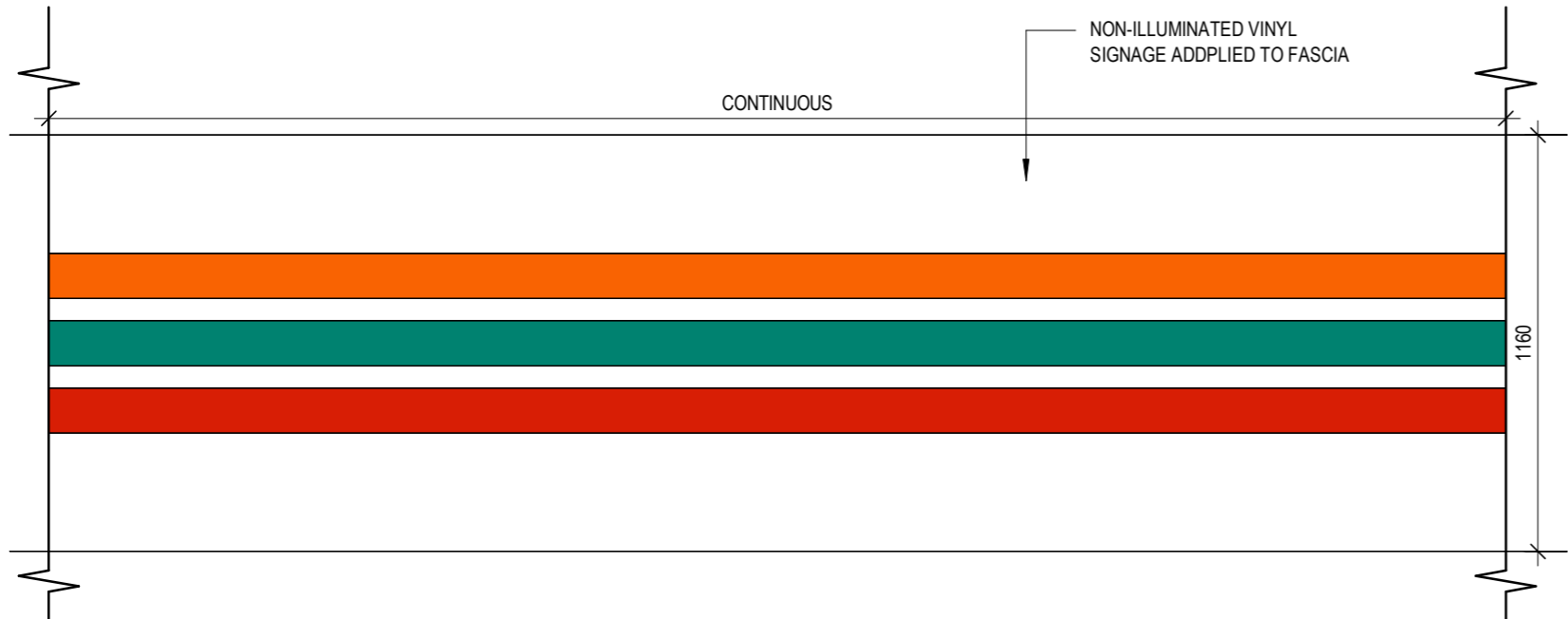
Revision			
REV	AMENDMENTS	DATE	BY
A	SIGNAGE PACK	13.02.2025	SM

Project  
**ROCKHAMPTON CENTRAL**  
369 Yaamba Road, Park Avenue QLD,  
Australia  
SIGNAGE PACK

All dimensions are in millimeters. Verify all dimensions on site prior to commencement of any work. Do not scale off drawings. Copyright remains property of this office.

Scale @ A3 As indicated  
Drawing  
**SIGNAGE DETAILS 1**  
Store No.  
**4372**  
Revision  
**A**  
Date 17/02/2025 2:54:54 PM  
Drawn SM  
Drawing No.  
**SIGN06**

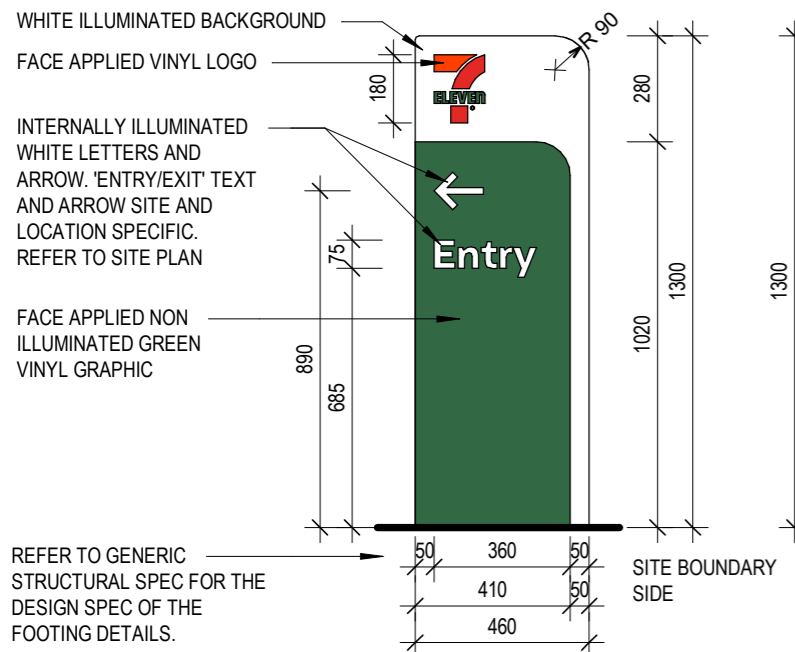




**ROCKHAMPTON REGIONAL COUNCIL**  
**AMENDED PLANS APPROVED**  
 -----  
**27 March 2025**  
 -----  
**DATE**  
 -----  
 These plans are approved subject to the current conditions of approval associated with  
**Development Permit No.: D/12-2015**  
 -----  
**Dated: 13 February 2015**  
 -----

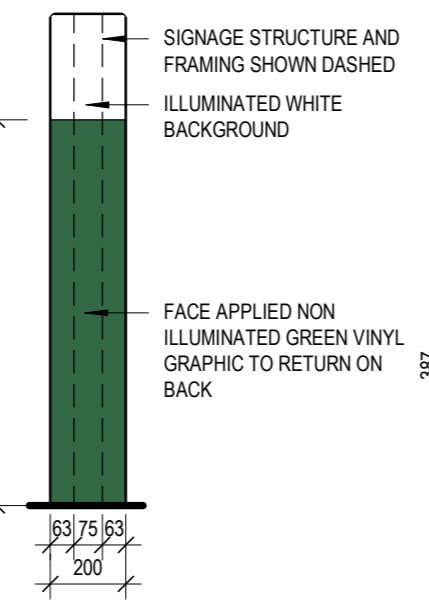
**1 S30A FASCIA STRIPES**  
 SIGN08 1:20

**NOTE:** REFER TO PROPOSED BUILDING ELEVATIONS FOR DIMENSIONS GRID SHOWN FOR REFERENCE ONLY. NOT TO BE CONSTRUCTED.



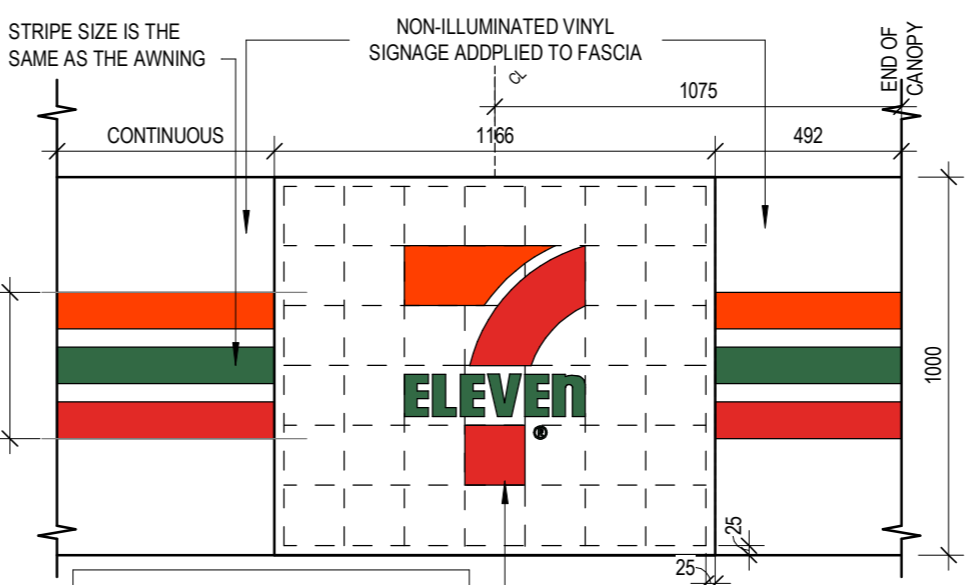
**TEXT SPECIFICATION**  
 FONT: OLDSCHOOL GROTESK BOLD  
 COLOUR: WHITE  
 LETTER HEIGHT: 75mm

**4 S3 DIRECTIONAL SIGN**  
 SIGN08 1:20



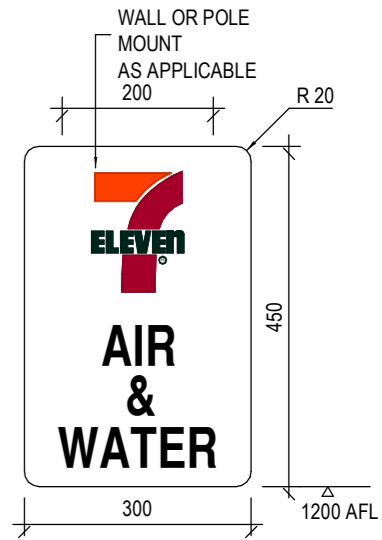
**NOTE:** REFER TO PROPOSED BUILDING ELEVATIONS FOR DIMENSIONS GRID SHOWN FOR REFERENCE ONLY. NOT TO BE CONSTRUCTED.

**5 S4 TYPICAL FUEL CANOPY FASCIA DETAIL**  
 SIGN08 1:20



**TEXT SPECIFICATION**  
 FONT: SANS SERIF BOLD  
 COLOUR: RED & GREEN  
 LETTER HEIGHT: 71mm, 32mm

**6 S5 PARKING SIGN**  
 SIGN08 1:10



**TEXT SPECIFICATION**  
 FONT: SANS SERIF BOLD  
 COLOUR: BLACK  
 LETTER HEIGHT: 53mm

**7 S6 AIR & WATER SIGN**  
 SIGN08 1:10



**Status** APPROVAL ISSUE

7-ELEVEN STORES PTY. LTD. ABN 48 005 299 427  
 TEL: (03) 9541 0711 FAX: (03) 9965 1954  
 BUILDING 2, 658 CHURCH STREET  
 RICHMOND, VICTORIA 3121  
 AUSTRALIA

Revision			
REV	AMENDMENTS	DATE	BY
A	SIGNAGE PACK	13.02.2025	SM

**Project**  
 ROCKHAMPTON CENTRAL  
 369 Yaamba Road, Park Avenue QLD,  
 Australia  
 SIGNAGE PACK

All dimensions are in millimeters. Verify all dimensions on site prior to commencement of any work. Do not scale off drawings. Copyright remains property of this office.

**Scale @ A3** As indicated      **Drawn** SM      **Date** 17/02/2025 2:54:56 PM

**Drawing**  
**SIGNAGE DETAILS 3**

**Store No.** 4372      **Revision** A      **Drawing No.** SIGN08

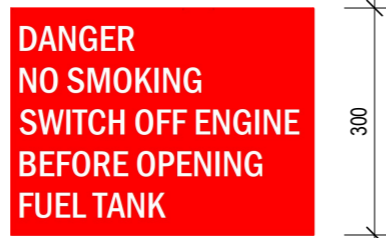






**TEXT SPECIFICATION**  
 FONT: HELVETICA CONDENSED BOLD  
 BACKGROUND: BLACK  
 COLOUR: RED ON WHITE  
 LETTERS HEIGHT: 100mm

**NOTE:** HAZCHEM WARNING PLACARDS TO BE DISPLAYED AT ALL ENTRANCES



**TEXT SPECIFICATION**  
 FONT: FRANKLIN GOTHIC EXTRA CONDENSED  
 COLOUR: WHITE ON RED  
 LETTER HEIGHT: 43mm

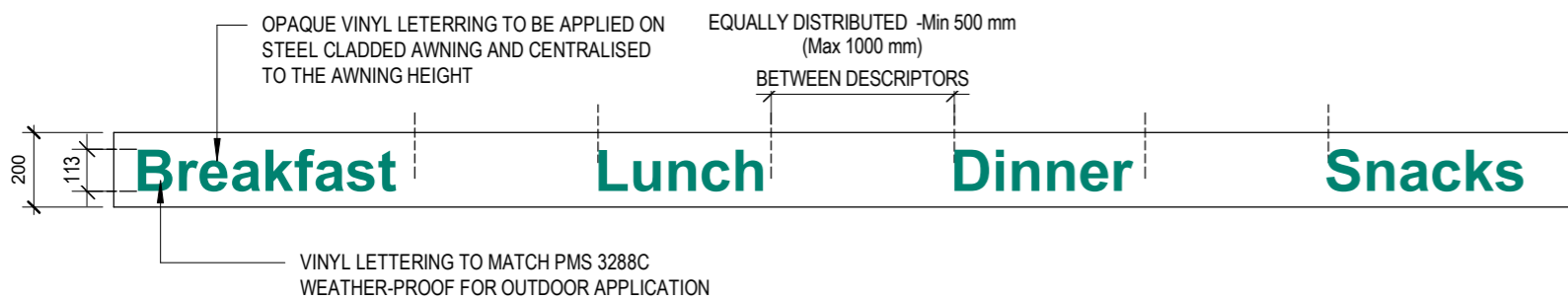


**ROCKHAMPTON REGIONAL COUNCIL**  
**AMENDED PLANS APPROVED**  
 -----  
**27 March 2025**  
 -----  
**DATE**  
 -----  
 These plans are approved subject to the current conditions of approval associated with  
**Development Permit No.: D/12-2015**  
 -----  
**Dated: 13 February 2015**

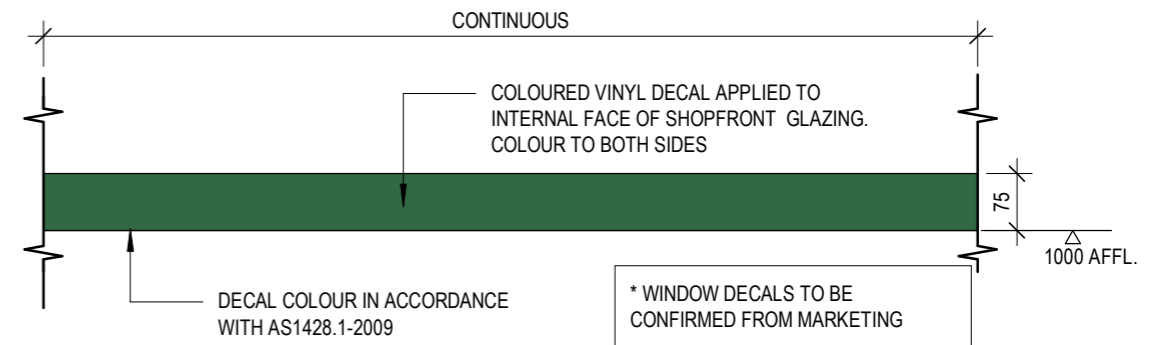
**1 S14 HAZCHEM SIGN**  
 SIGN10 1 : 10

**2 S15 DANGER SIGN**  
 SIGN10 1 : 10

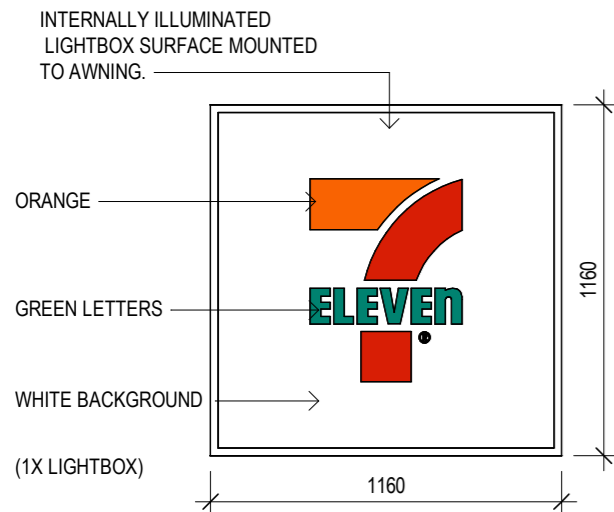
**3 S18 DANGER DECAL**  
 SIGN10 1 : 10



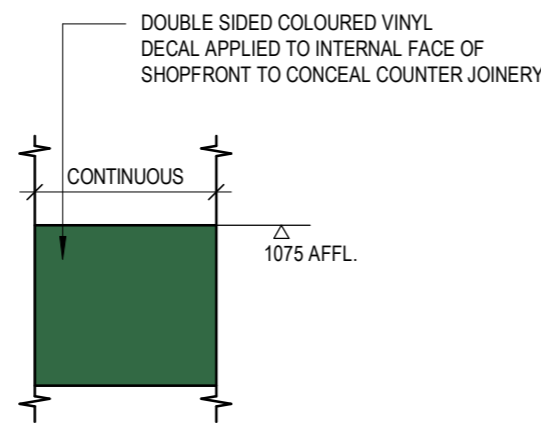
**5 S30B AWNING SIGNAGE**  
 SIGN10 1 : 20



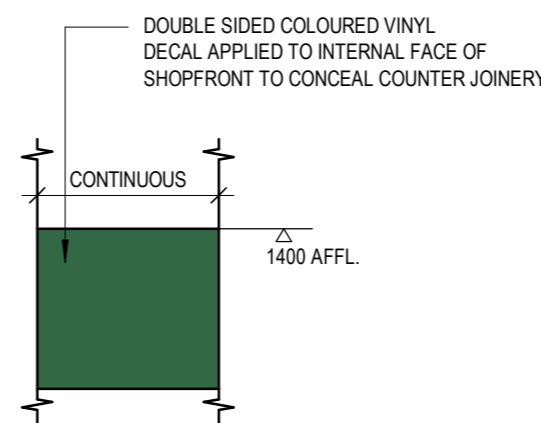
**6 S32 WINDOW DECALS - SOLID**  
 SIGN10 1 : 10



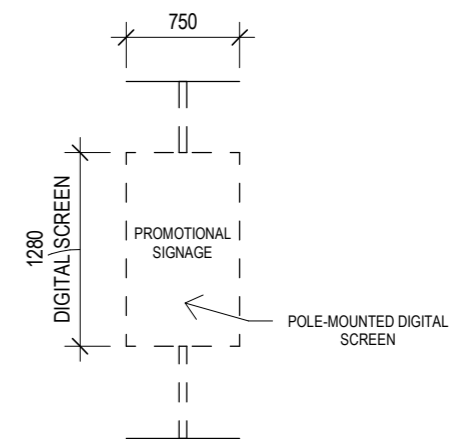
**11 S31 AWNING LIGHTBOX SIGNAGE**  
 SIGN10 1 : 25



**8 S33 TYPICAL WINDOW FILM DETAIL**  
 SIGN10 1 : 50



**7 S33.1 TYPICAL WINDOW FILM DETAIL**  
 SIGN10 1 : 50



**10 S37 INTERNAL DIGITAL SCREEN DETAIL**  
 SIGN10 1 : 50



**Status APPROVAL ISSUE**

7-ELEVEN STORES PTY. LTD. ABN 48 005 299 427  
 TEL: (03) 9541 0711 FAX: (03) 9965 1954  
 BUILDING 2, 658 CHURCH STREET  
 RICHMOND, VICTORIA 3121  
 AUSTRALIA

**Revision**

REV	AMENDMENTS	DATE	BY
A	SIGNAGE PACK	13.02.2025	SM

**Project**

**ROCKHAMPTON CENTRAL**  
 369 Yaamba Road, Park Avenue QLD,  
 Australia  
 SIGNAGE PACK

**Scale @ A3** As indicated

**Drawn** SM

**Date** 17/02/2025 2:55:00 PM

**Drawing**  
**SIGNAGE DETAILS 5**

**Store No.**  
**4372**

**Revision**  
**A**

**Drawing No.**  
**SIGN10**

All dimensions are in millimeters. Verify all dimensions on site prior to commencement of any work. Do not scale off drawings. Copyright remains property of this office.