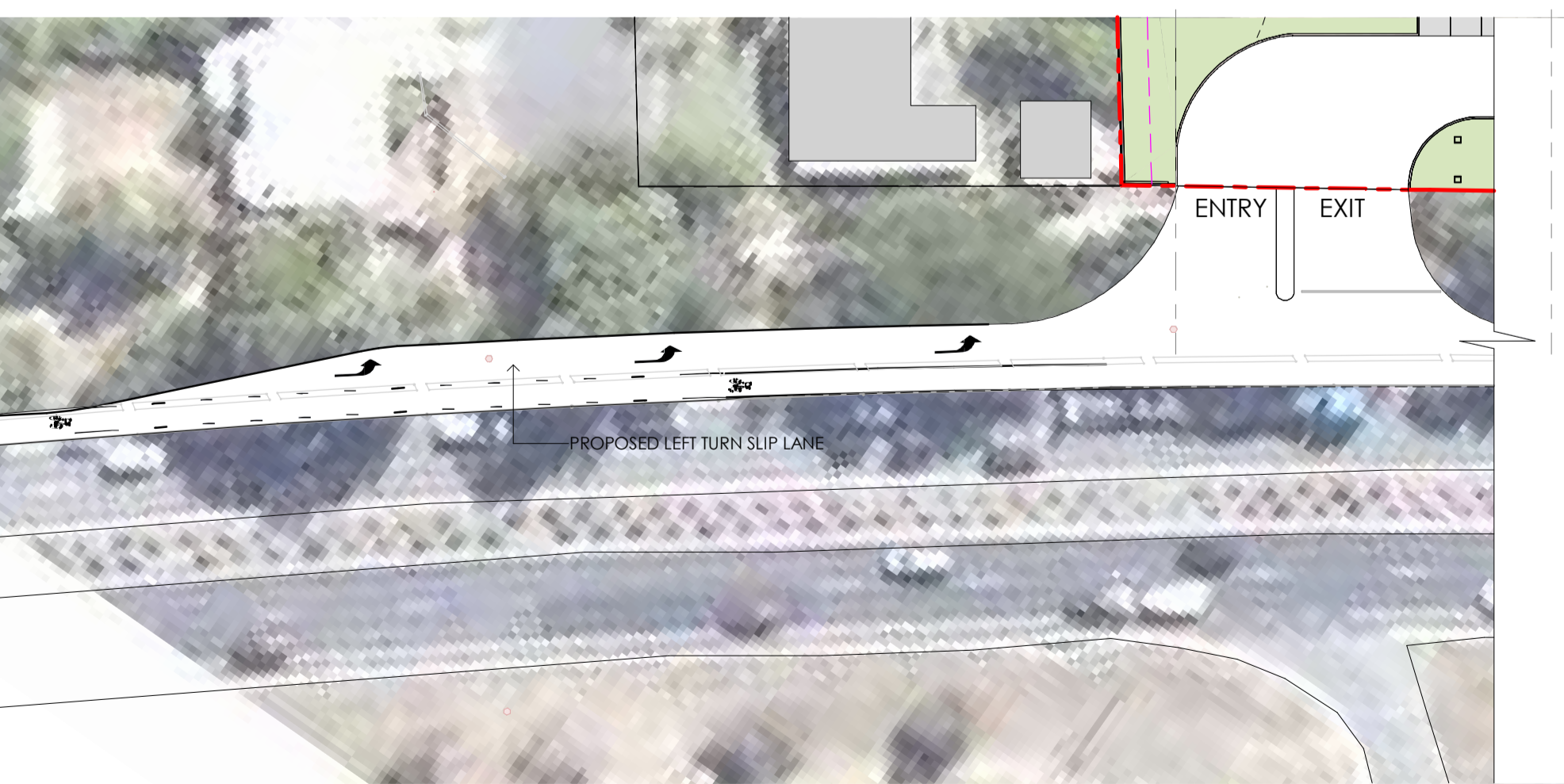
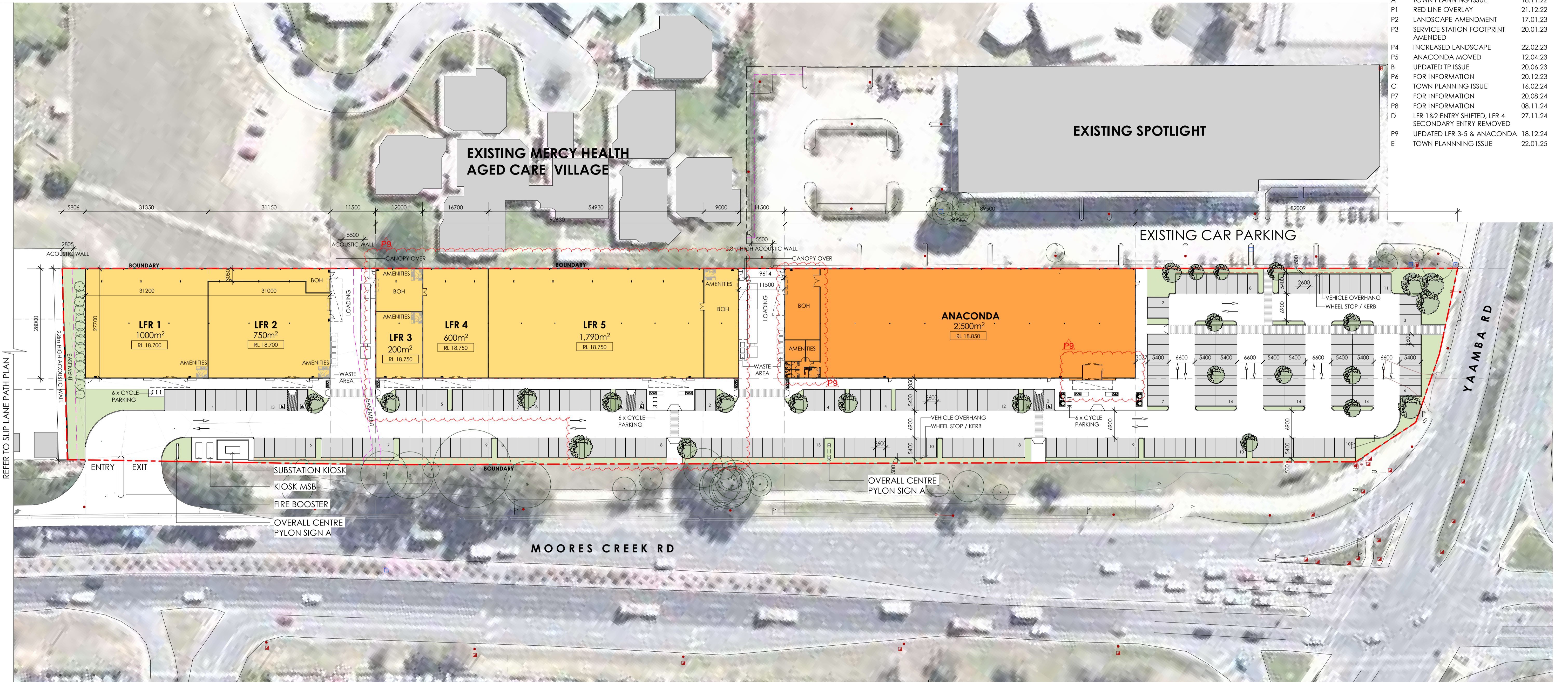


ISSUE	AMENDMENT	DATE	CHK'D
A	TOWN PLANNING ISSUE	18.11.22	SJE
P1	RED LINE OVERLAY	21.12.22	SJE
P2	LANDSCAPE AMENDMENT	17.01.23	SJE
P3	SERVICE STATION FOOTPRINT AMENDED	20.01.23	SJE
P4	INCREASED LANDSCAPE	22.02.23	SJE
P5	ANACONDA MOVED	12.04.23	SJE
B	UPDATED TP ISSUE	20.06.23	SJE
P6	FOR INFORMATION	20.12.23	SJE
C	TOWN PLANNING ISSUE	16.02.24	SJE
P7	FOR INFORMATION	20.08.24	SJE
P8	FOR INFORMATION	08.11.24	SJE
D	LFR 1 & 2 ENTRY SHIFTED, LFR 4 SECONDARY ENTRY REMOVED	27.11.24	SJE
P9	UPDATED LFR 3-5 & ANACONDA	18.12.24	SJE
E	TOWN PLANNING ISSUE	22.01.25	SJE



2 SLIP LANE PATH PLAN

**ROCKHAMPTON REGIONAL COUNCIL**  
**AMENDED PLANS APPROVED**  
**18 March 2025**  
**DATE**

These plans are approved subject to the current conditions of approval associated with

**Development Permit No.: D/155-2022**

**Dated: 27 May 2024**

**LEGEND**

- PROPERTY BOUNDARIES
- EASEMENTS
- LANDSCAPING
- CARSPACES

**AREA SUMMARY**

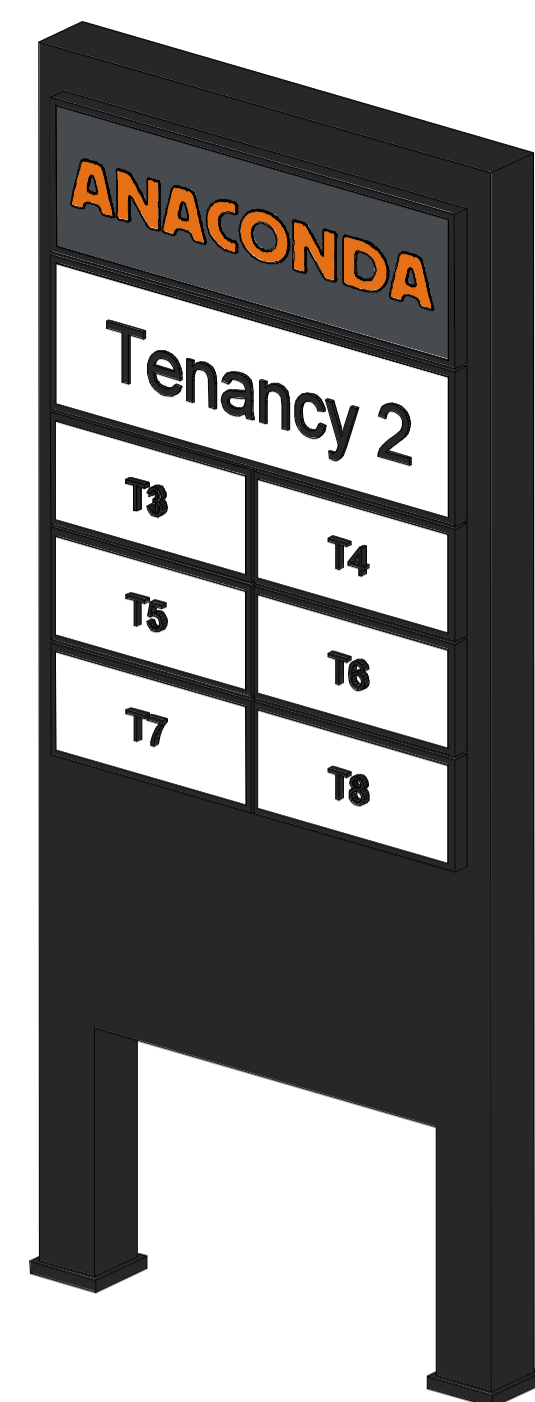
SITE AREA	17,203 m <sup>2</sup>
LFR 1	1000m <sup>2</sup>
LFR 2	750m <sup>2</sup>
LFR 3	200m <sup>2</sup>
LFR 4	600m <sup>2</sup>
LFR 5	1,790m <sup>2</sup>
ANACONDA	2,500m <sup>2</sup>
<b>TOTAL NEW BUILD AREA GFA</b>	<b>6,840m<sup>2</sup></b>
<b>SITE COVERAGE PERCENTAGE</b>	<b>39.78%</b>
LANDSCAPE AREA	1451.47m <sup>2</sup>
<b>LANDSCAPE AREA COVERAGE PERCENTAGE</b>	<b>8.43%</b>

**CAR PARKING SUMMARY**

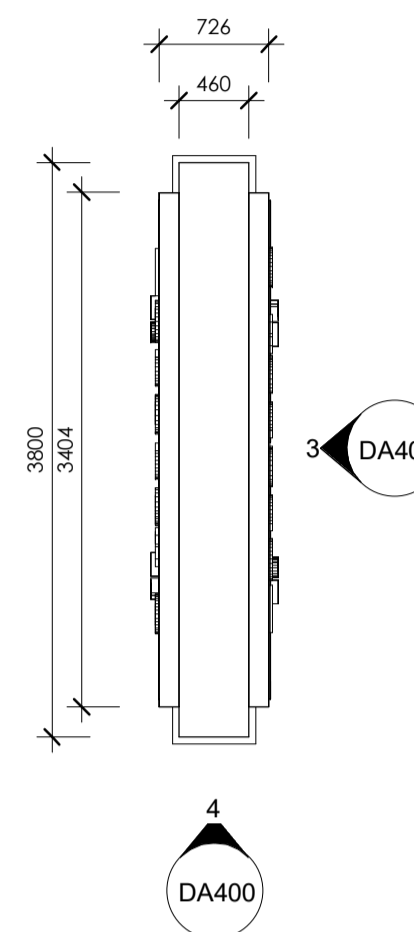
CAR SPACES	230
DISABLED SPACES	6
<b>TOTAL CAR SPACES</b>	<b>236</b>
PARKING RATIO	3.5 PER 100 SQM

▣ SITE PLAN

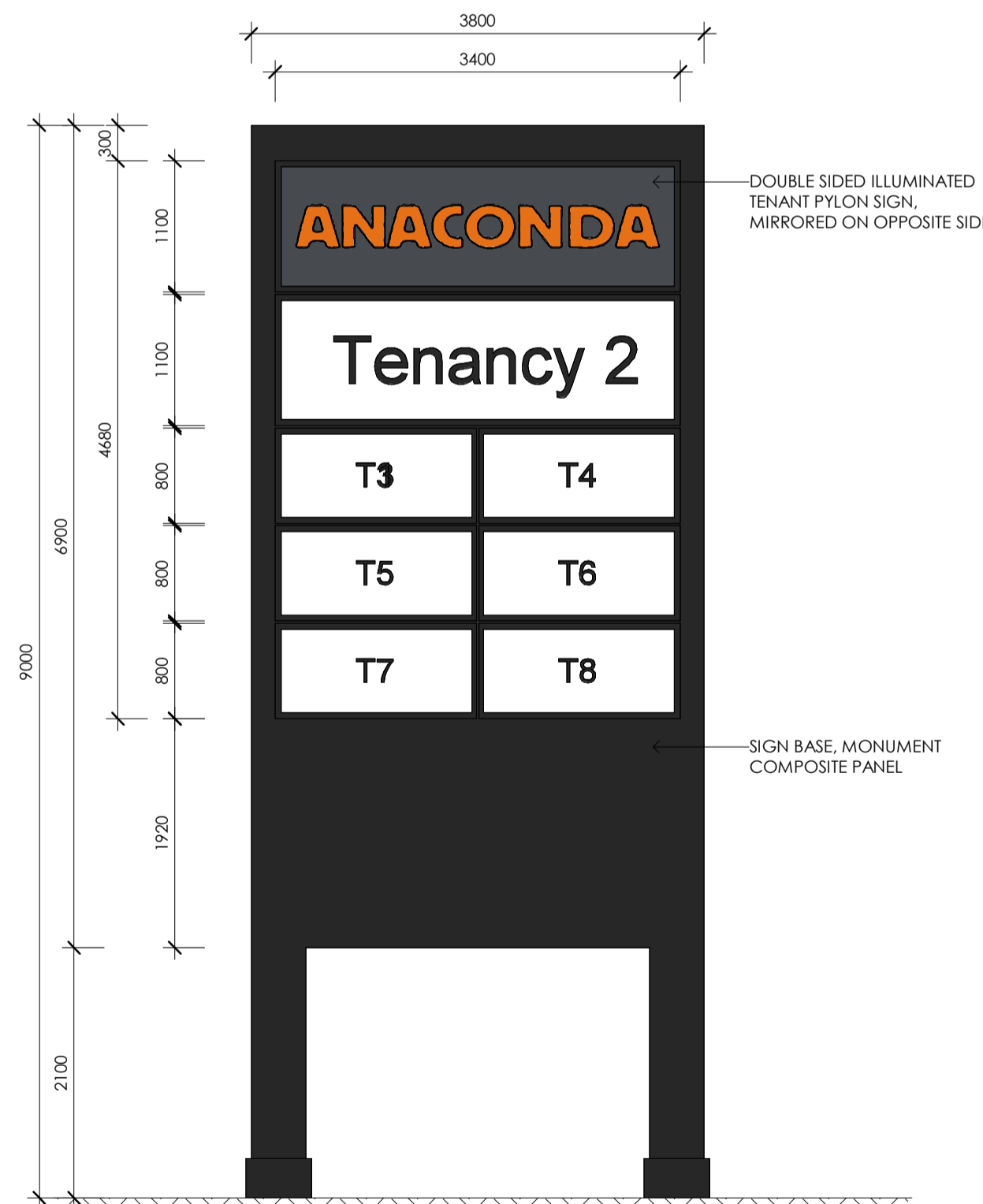
ISSUE	AMENDMENT	DATE	CHK'D
A	TOWN PLANNING ISSUE	18.11.22	SJE
B	UPDATED TP ISSUE	20.06.23	SJE
C	TOWN PLANNING ISSUE	16.02.24	SJE
D	TOWN PLANNING ISSUE	22.01.25	SJE



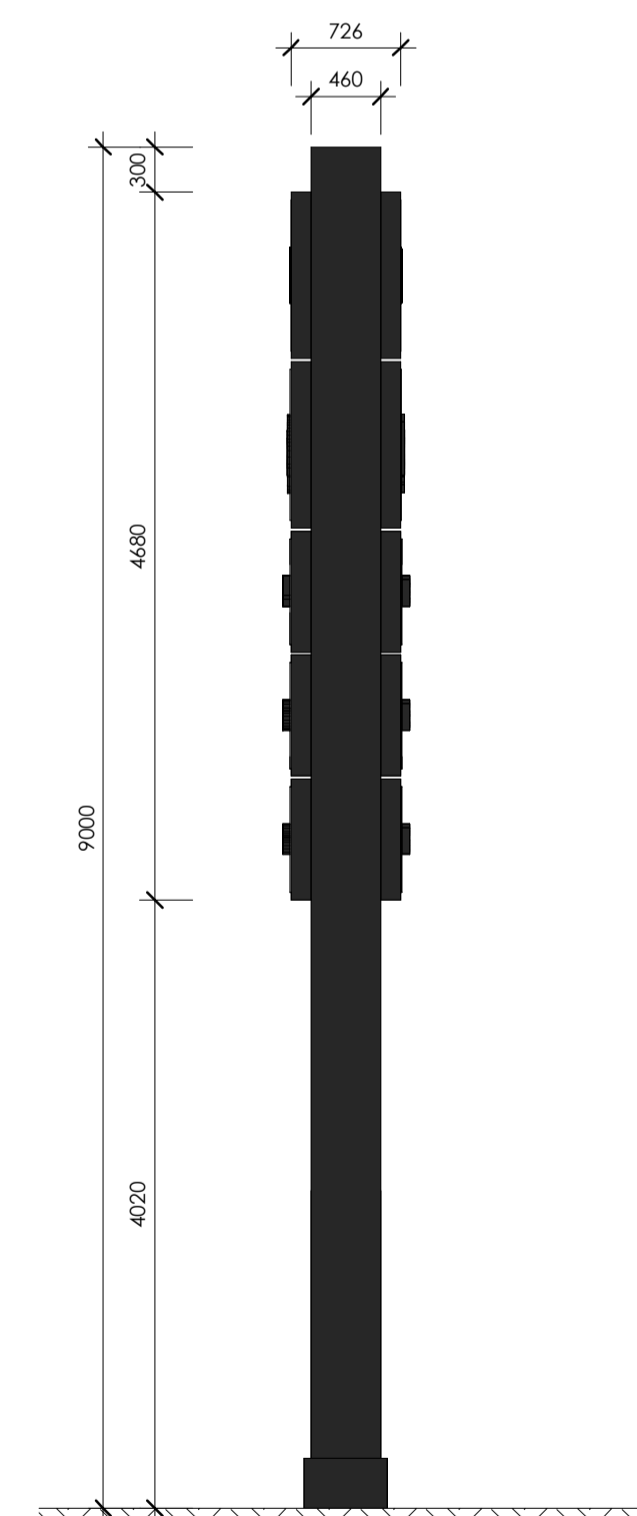
1 **PYLON A ISO**  
Scale:



2 **PYLON A PLAN**  
Scale: 1 : 50



3 **PYLON A ELEVATION**  
Scale: 1 : 50



4 **PYLON A ELEVATION**  
Scale: 1 : 50

**ROCKHAMPTON REGIONAL COUNCIL**

**AMENDED PLANS APPROVED**

**18 March 2025**

**DATE**

These plans are approved subject to the current conditions of approval associated with

**Development Permit No.: D/155-2022**

**Dated: 27 May 2024**

**ROCKHAMPTON REGIONAL COUNCIL**

**AMENDED PLANS APPROVED**

**18 March 2025**

**DATE**

These plans are approved subject to the current conditions of approval associated with

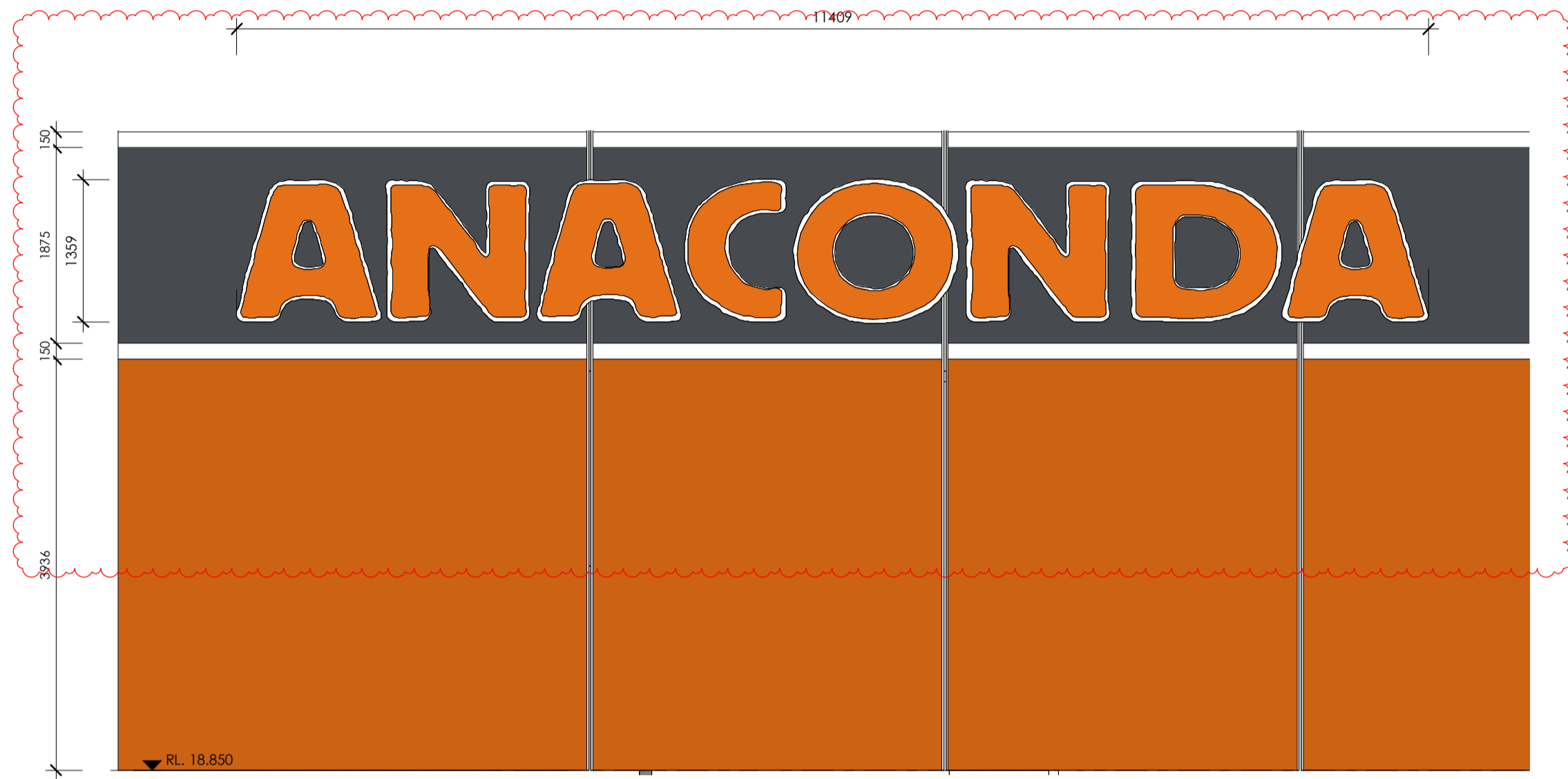
**Development Permit No.: D/155-2022**

**Dated: 27 May 2024**

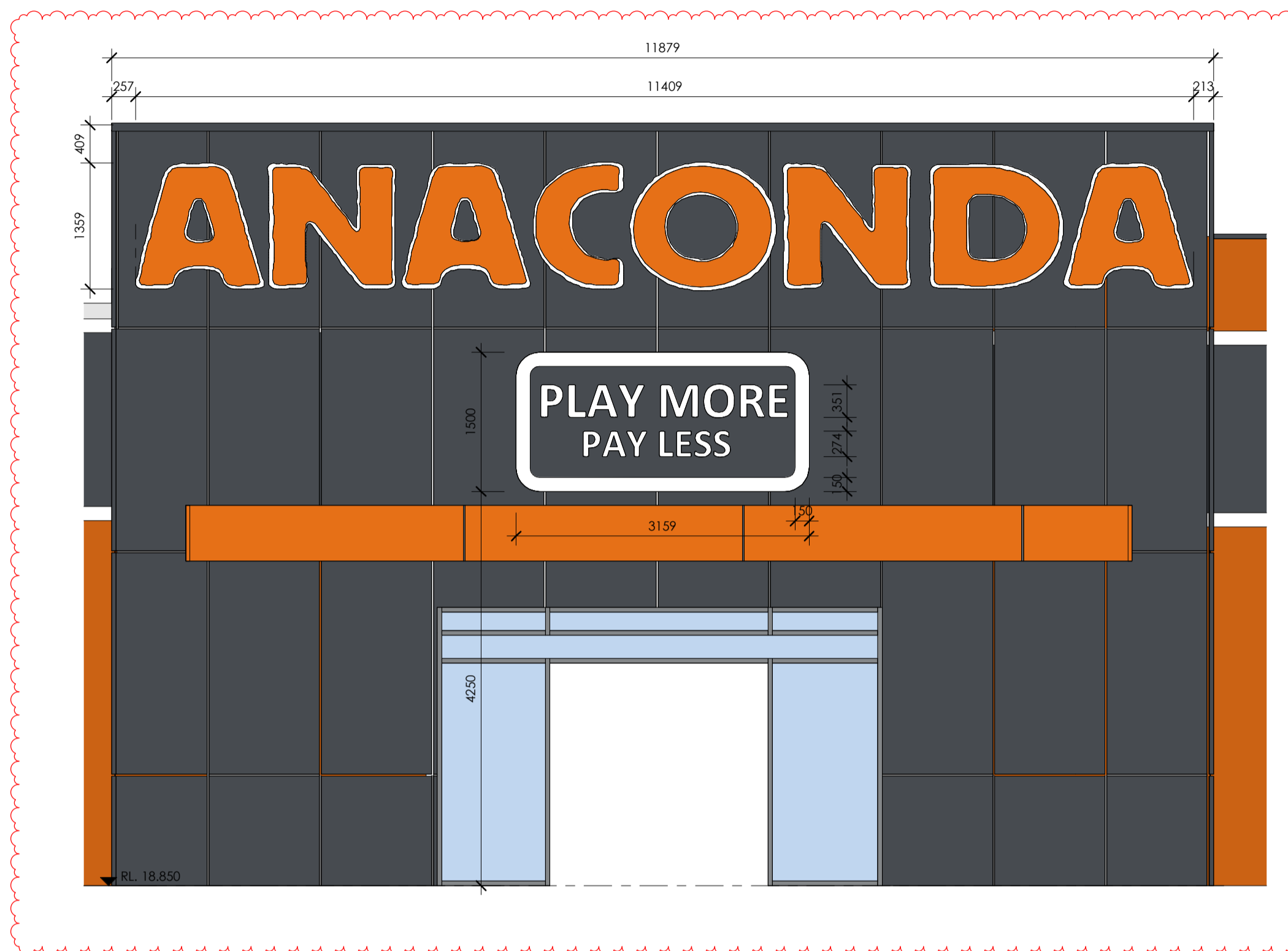
THIS DRAWING AND DESIGN IS SUBJECT TO COPYRIGHT AND MAY NOT BE REPRODUCED WITHOUT PRIOR WRITTEN CONSENT OF LEFFLER SIMES PTY LTD



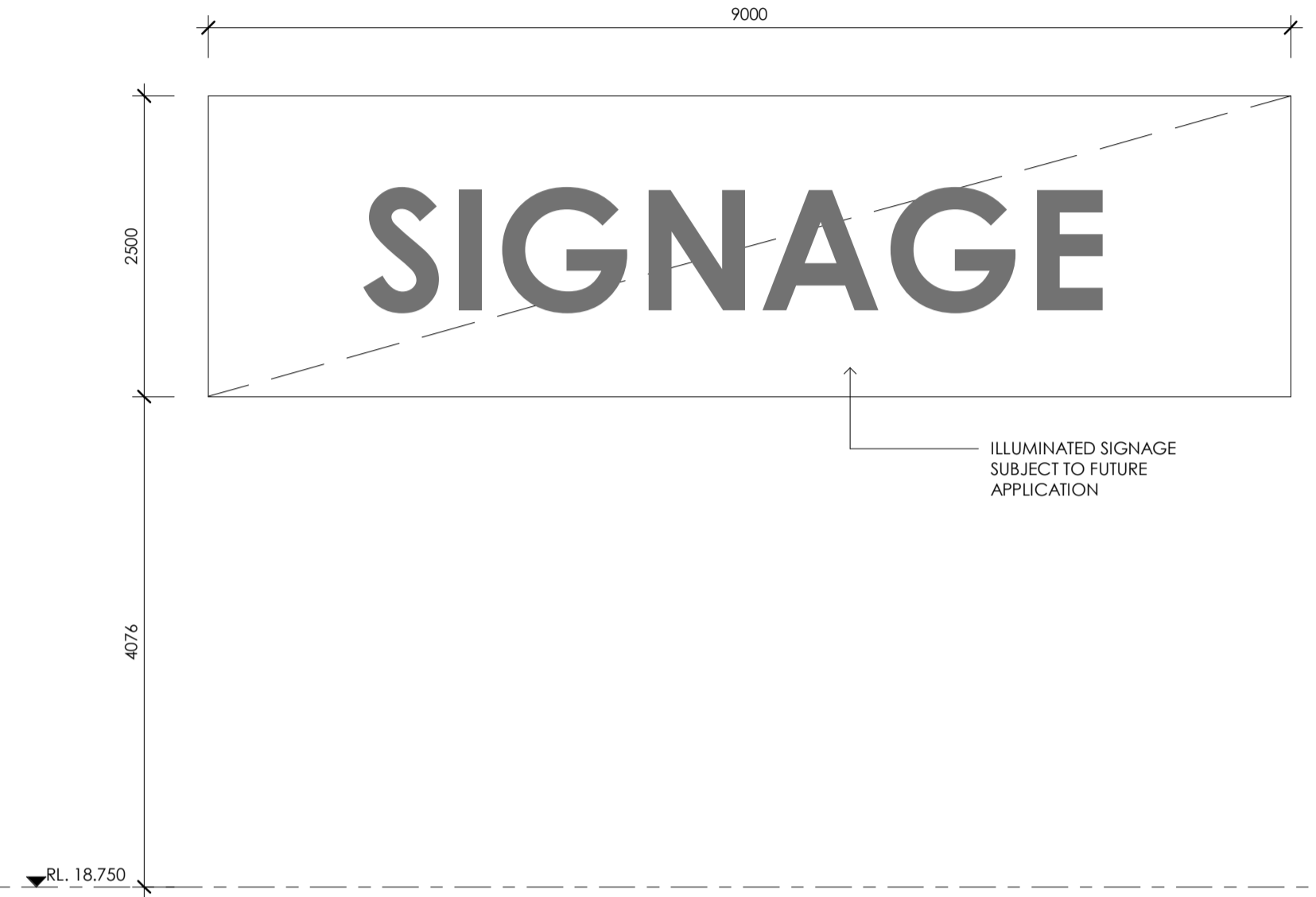
ISSUE	AMENDMENT	DATE	CHK'D
A	TOWN PLANNING ISSUE	18.11.22	SJE
B	UPDATED TP ISSUE	20.06.23	SJE
C	TOWN PLANNING ISSUE	16.02.24	SJE
P1	ANACONDA ENTRY AND SIGNAGE LOCATION UPDATED	18.12.24	SJE
D	TOWN PLANNING ISSUE	22.01.25	SJE



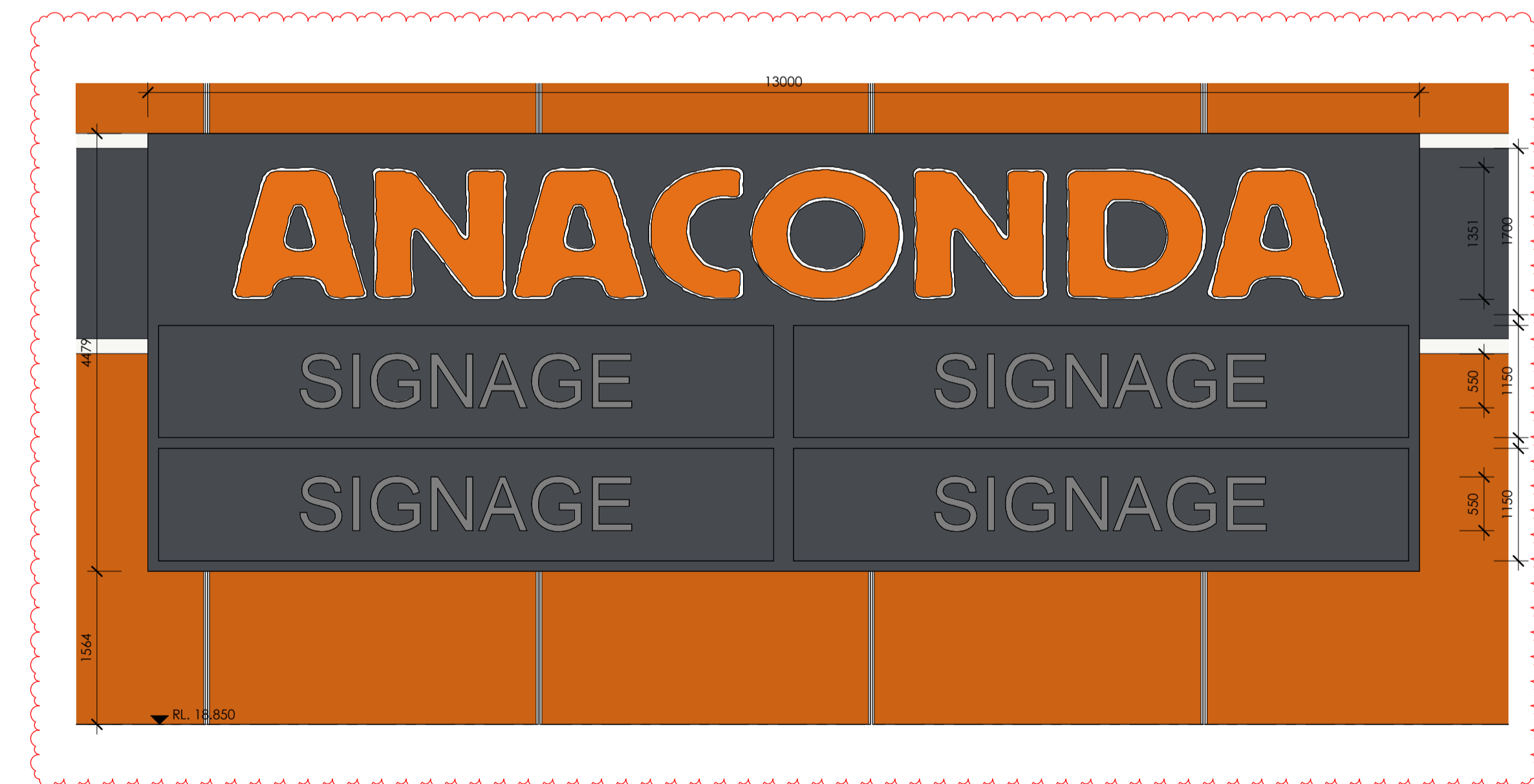
**1 ANACONDA SIGN 1**  
DA150 Scale: 1:50



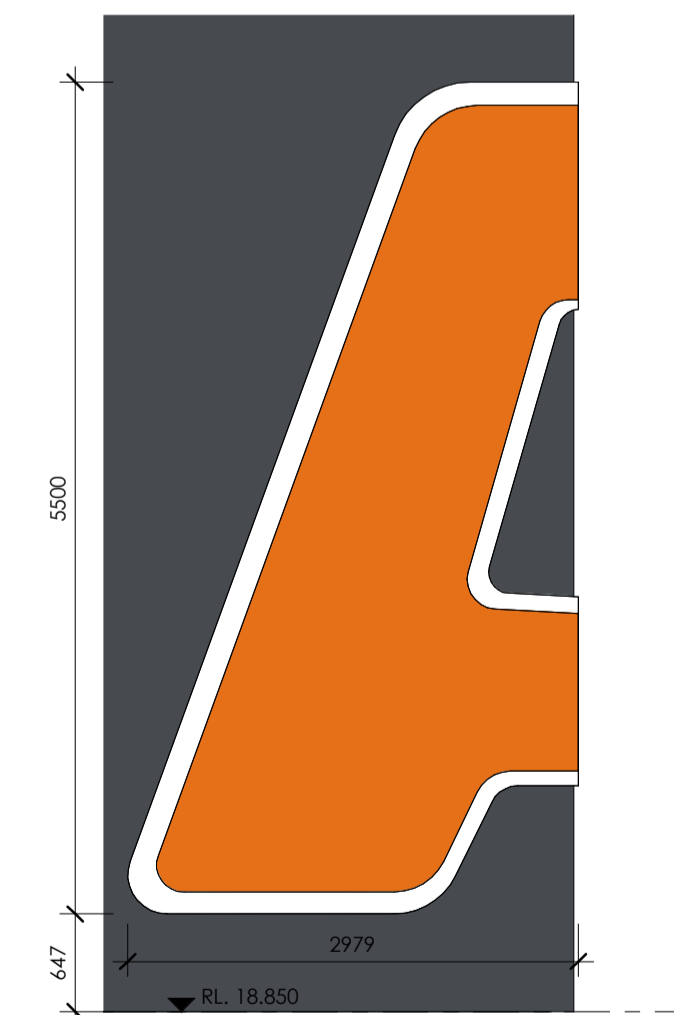
**2 ANACONDA SIGN 2**  
DA150 Scale: 1:50



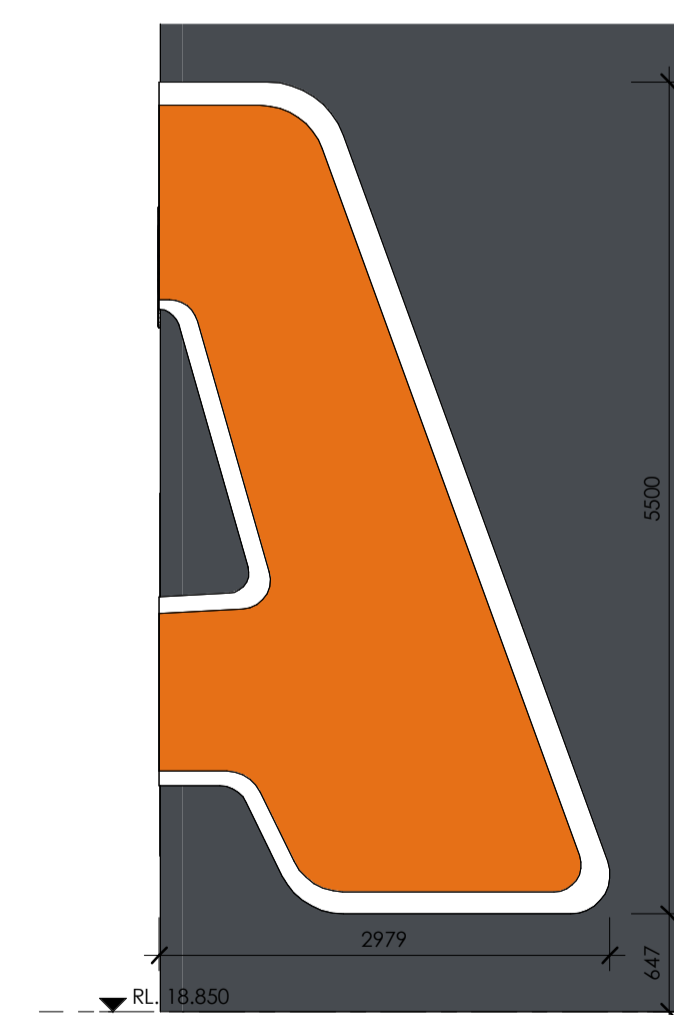
**7 LFR SIGN 1 - 5**  
Scale: 1:50



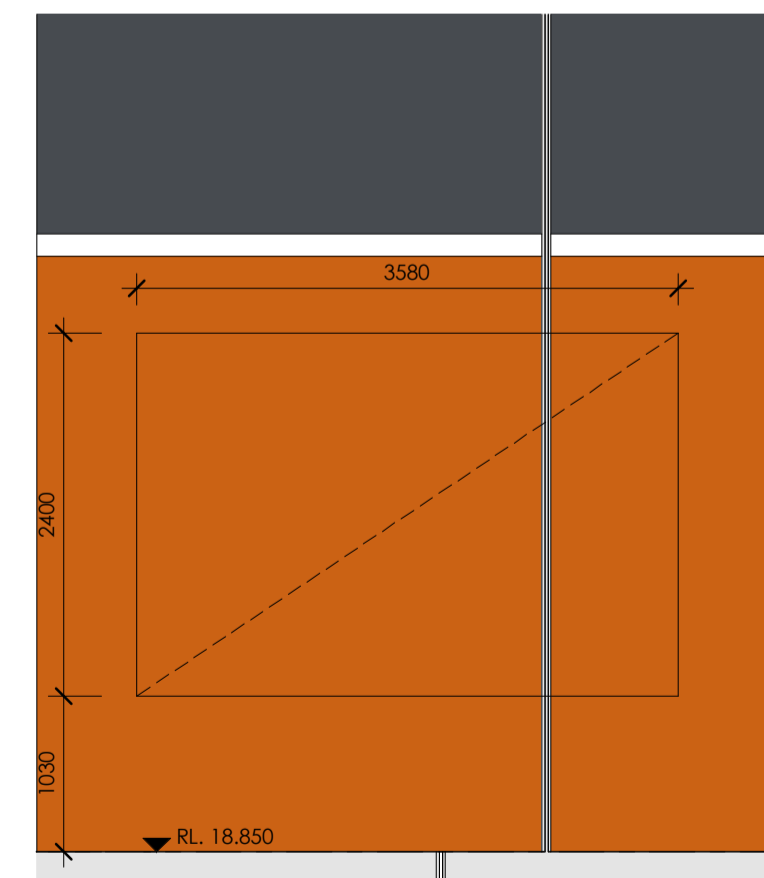
**3 ANACONDA SIGN 3**  
DA150 Scale: 1:50



**4 ANACONDA SIGN 4**  
DA150 Scale: 1:50



**5 ANACONDA SIGN 5**  
DA150 Scale: 1:50



**6 ANACONDA SIGN 6**  
DA150 Scale: 1:50

**SIGNAGE DETAILS**

ISSUE	AMENDMENT	DATE	CHK'D
A	TOWN PLANNING ISSUE	18.11.22	SJE
B	UPDATED TP ISSUE	20.06.23	SJE
C	TOWN PLANNING ISSUE	16.02.24	SJE
D	ARTIST IMPRESSION UPDATED	27.11.24	SJE
E	TOWN PLANNING ISSUE	22.01.25	SJE



01- ARTIST IMPRESSION - ANACONDA



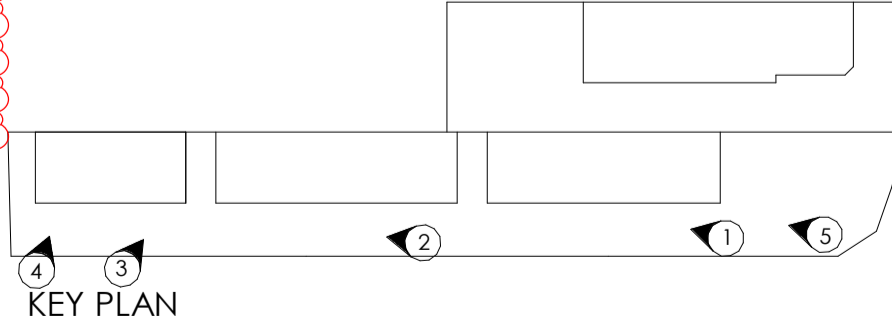
02- ARTIST IMPRESSIONS - LFR



03- ARTIST IMPRESSIONS - LFR 1



04- ARTIST IMPRESSIONS - LFR 1



**ROCKHAMPTON REGIONAL COUNCIL**

**AMENDED PLANS APPROVED**

**18 March 2025**

**DATE**

These plans are approved subject to the current conditions of approval associated with

**Development Permit No.: D/155-2022**

**Dated: 27 May 2024**

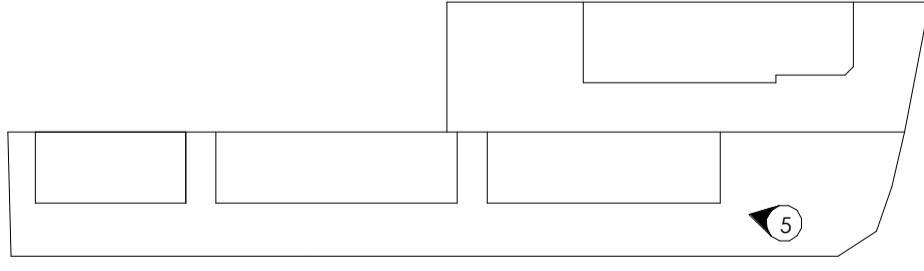
THIS DRAWING AND DESIGN IS SUBJECT TO COPYRIGHT AND MAY NOT BE REPRODUCED WITHOUT PRIOR WRITTEN CONSENT OF LEFFLER SIMES PTY LTD



ISSUE	AMENDMENT	DATE	CHK'D
A	TOWN PLANNING ISSUE	18.11.22	SJE
B	UPDATED TP ISSUE	20.06.23	SJE
C	TOWN PLANNING ISSUE	16.02.24	SJE
D	ARTIST IMPRESSION UPDATED	27.11.24	SJE
E	TOWN PLANNING ISSUE	22.01.25	SJE



ARTIST IMPRESSIONS-AERIAL VIEW



KEY PLAN

**ARTIST IMPRESSION - SHEET 2**

