

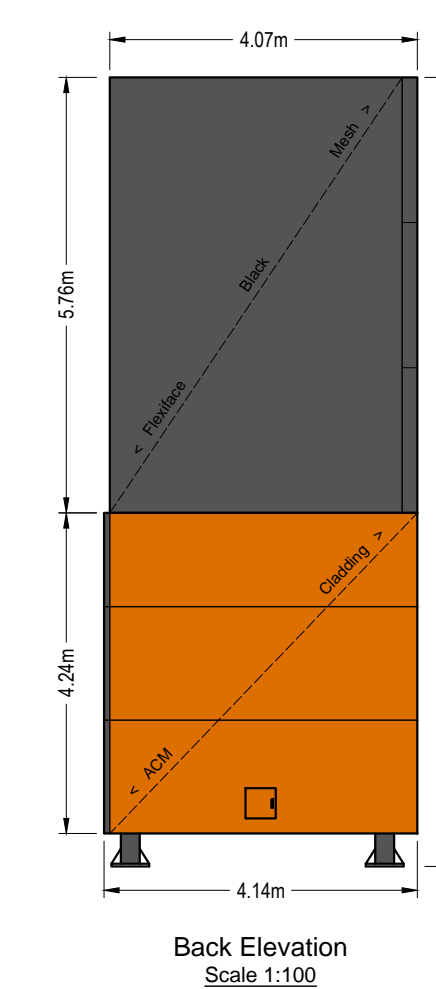
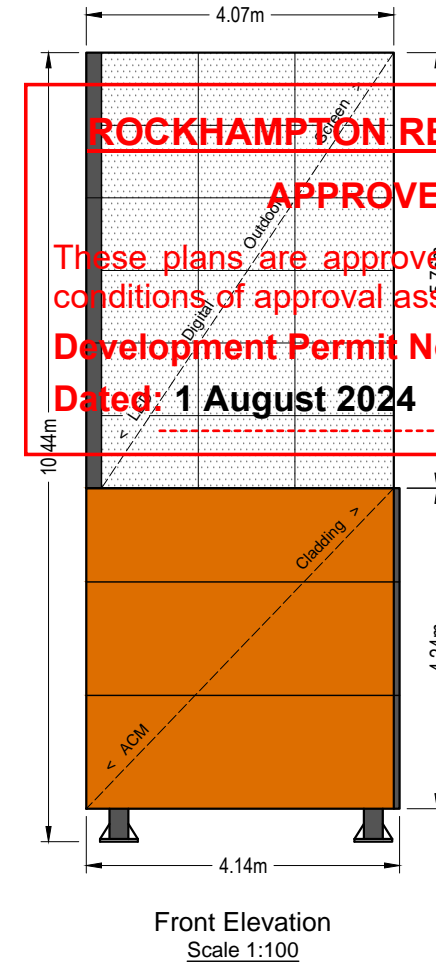
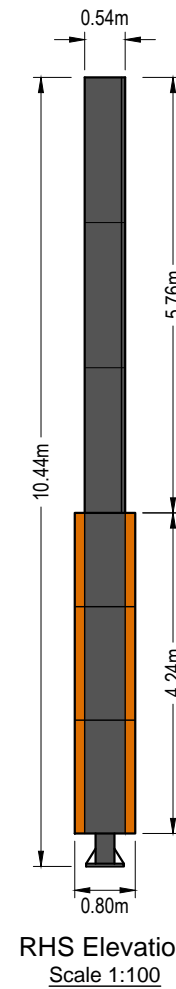
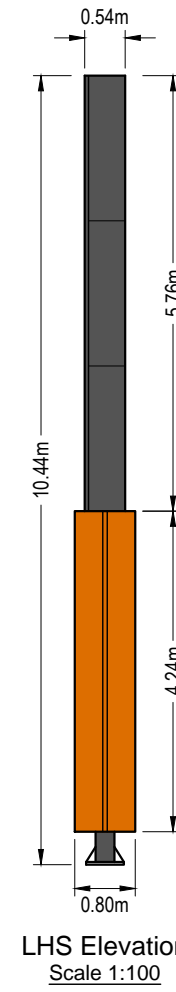
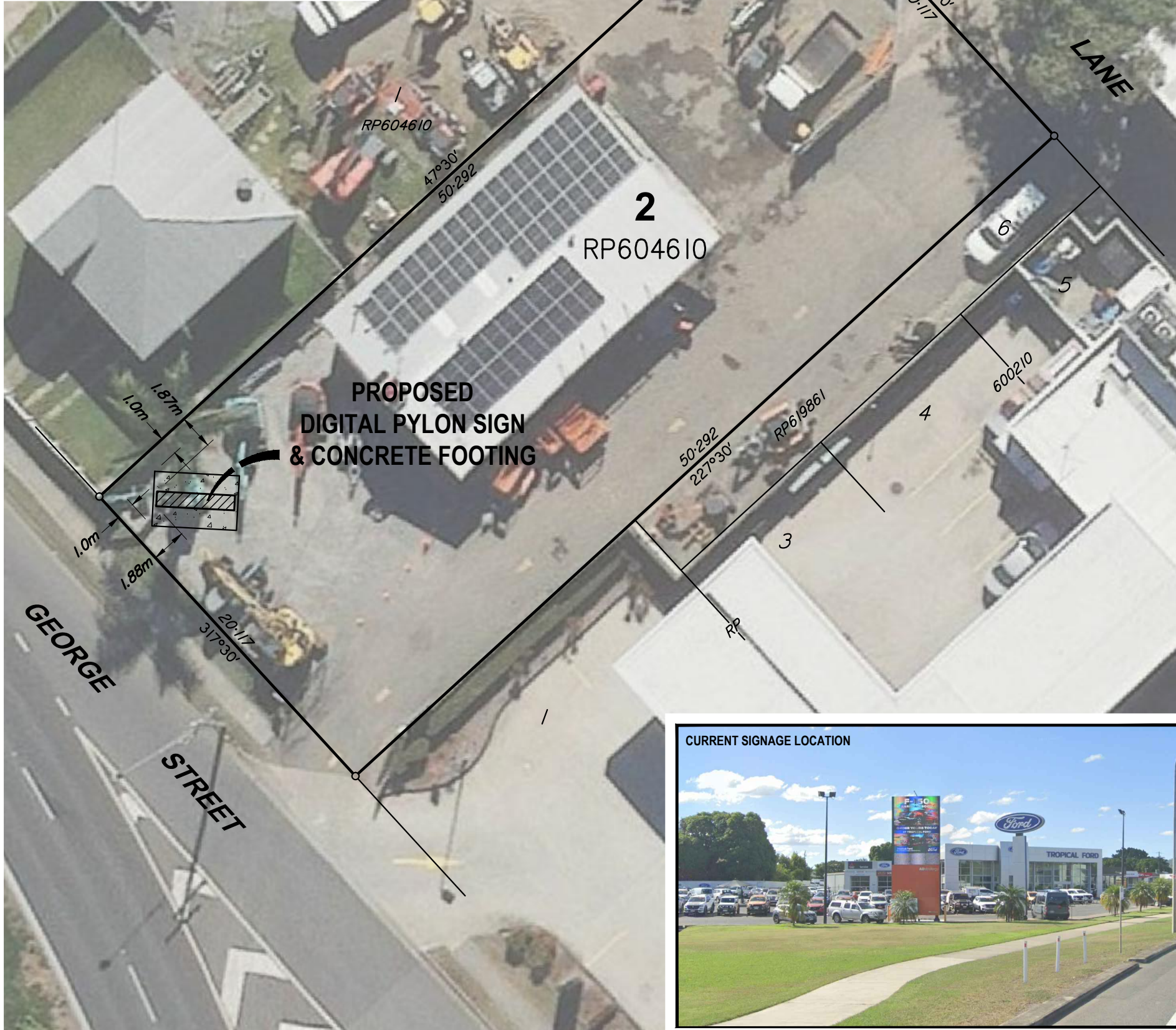
Notes:

Boundary setbacks are approximate only and are subject to approved detailed design and orientation.

Orientation to generally face south towards the approaching north bound traffic along Gladstone Road.

Dimensions shown hereon are approximate only, please refer to design drawings for additional details.

Concrete footing to be 4.5m x 2.9m x 1.5m deep, please refer to design drawings for additional details.



ROCKHAMPTON REGIONAL COUNCIL
APPROVED PLANS

These plans are approved subject to the current conditions of approval associated with
Development Permit No.: D/54-2024
Dated: 1 August 2024

IMPORTANT NOTE

This plan was prepared to accompany an application to Rockhampton Regional Council and should not be used for any other purpose.

The dimensions and areas shown hereon are subject to field survey and also to the requirements of council and any other authority which may have requirements under any relevant legislation.

In particular, no reliance should be placed on the information on this plan for any financial dealings involving the land.

This note is an integral part of this plan.

client
Event Holding Solutions Pty Ltd

project
169 George Street, Rockhampton City

plan of
Proposal Plan (Advertising Device - Digital Pylon Sign)

rpd
Lot 2 on RP604610

lga
Rockhampton Regional Council

issue	date	details	authorised
A	14-05-2024	Initial Issue	RJKF



scale
1:250 @ A3

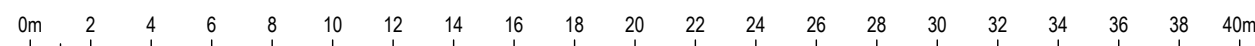
sheet no.
1 of 1

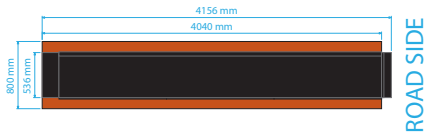
plan no.
9323-01-PRO

datum
-

cad file
9323-01-PRO-A

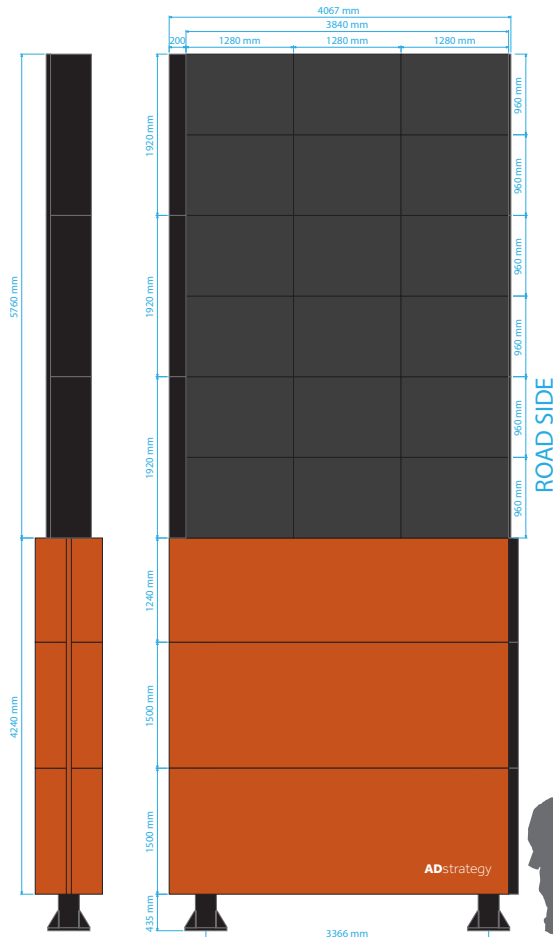
issue
A





ROAD SIDE

NTS 01 TOP ELEVATION: GENERAL OVERVIEW



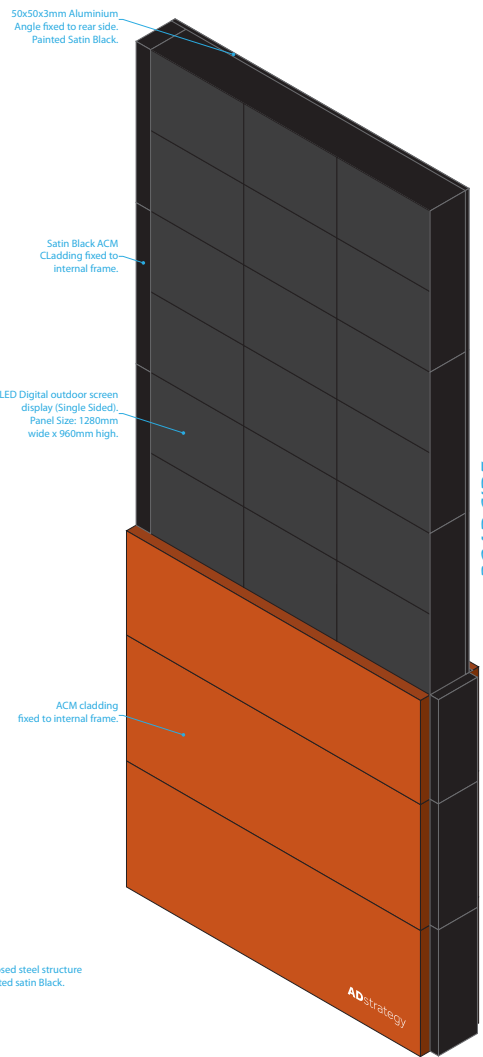
ROAD SIDE

NTS 02 LHS ELEVATION: GENERAL OVERVIEW

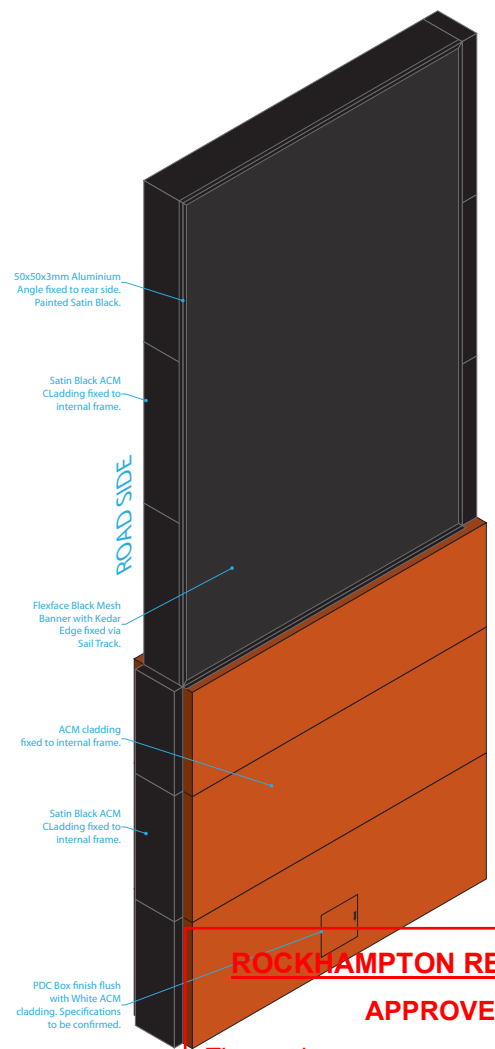
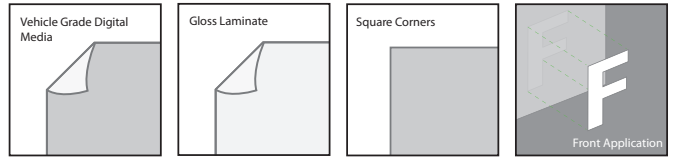
NTS 03 FRONT ELEVATION: GENERAL OVERVIEW

NTS 04 RHS ELEVATION: GENERAL OVERVIEW

NTS 05 FRONT ISOMERIC VIEW: GENERAL OVERVIEW



ROAD SIDE



ROAD SIDE

NTS 06 REAR ISOMERIC VIEW: GENERAL OVERVIEW

Colours
 - CMYK: None Specified.
 - Orange: PMS 167C.
 - White.
 - Black.

Materials
 - Internal Steel Structure.
 - Aluminium Composite Material Cladding. Black & White.
 - Steel / Aluminium framing & Structure.
 - N6-Series LED modules.
 - Size: 1280x960x96mm.
 - Vehicle Grade Digital Media.

Description
 - Proposed Pylon design and overall dimensions including N6 series.
 SMD3535 Wide Viewing Angle:
 Horizontal 140 deg / Vertical 140 deg.

Quantity 1 (Single Sided) Page 1 of 6

Scale NOT TO SCALE

File Location
 MYCLOUDPR4100\Public\Jobs\NnkSpin\26746 - Digital Pylon for Tropical Auto Group - Rockhampton\5 - Proofs

Client
 Tropical Auto Group - Rockhampton
 Project
 Digital Pylon
 Work Order #
 26746

Item # 1
 Version # 8
 Date 2019
 Designer DT
 Checked N/A

ROCKHAMPTON REGIONAL COUNCIL
APPROVED PLANS
 These plans are approved subject to the current conditions of approval associated with Development Permit No.: **D/54-2024**
Dated: 1 August 2024

© All artwork remains the property of SignSite. Copyright is reserved by SignSite. Unless authorised by SignSite in writing, no reproduction or disclosure to any third party is permitted.

Colours

- CMYK: None Specified.
- Orange: PMS 167C.
- White.
- Black.

Materials

- 250x250x9mm Steel SHS. (C450 Grade lower. C350 Grade Upper).
- 250x150x6mm Steel RHS
- 40x40x3mm Steel SHS.
- 40x40x4mm Steel SHS.
- 75x25x2.5mm Steel RHS.
- 50x50x3mm Aluminium Angle.
- 20x20x1.6 Aluminium Angle.
- 30mm Steel Mounting Plates.
- 35mm Steel Baseplates.
- 10mm Steel Gussets.
- 6mm Steel Mounting Plates.
- 4mm ACM

Description

- Proposed Pylon design and overall dimensions including N6 series.
- SMD3535 Wide Viewing Angle.
- Horizontal 140 deg / Vertical 140 deg.

Quantity **Page**
 1 (Single Sided) 2 of 6

Scale
 NOT TO SCALE

File Location
 MYCLOUDPR4100\Public\Jobs\NnkSpin
 \26746 - Digital Pylon for Tropical Auto
 Group - Rockhampton\5 - Proofs

Client
Tropical Auto Group
 - Rockhampton

Project
Digital Pylon

Work Order #
26746

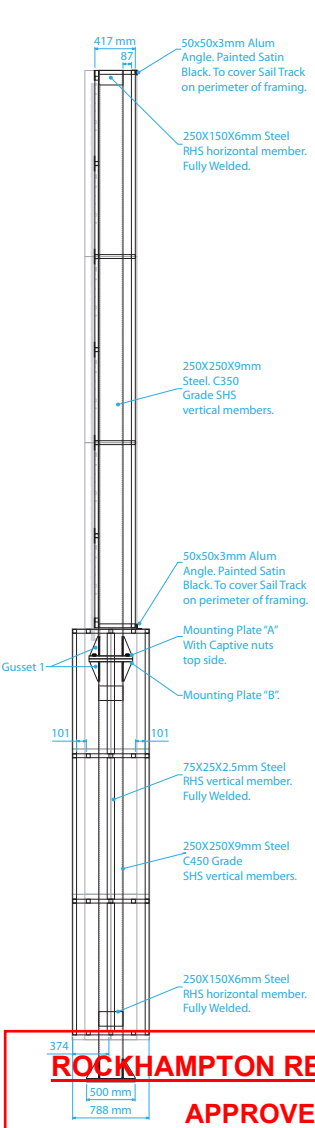
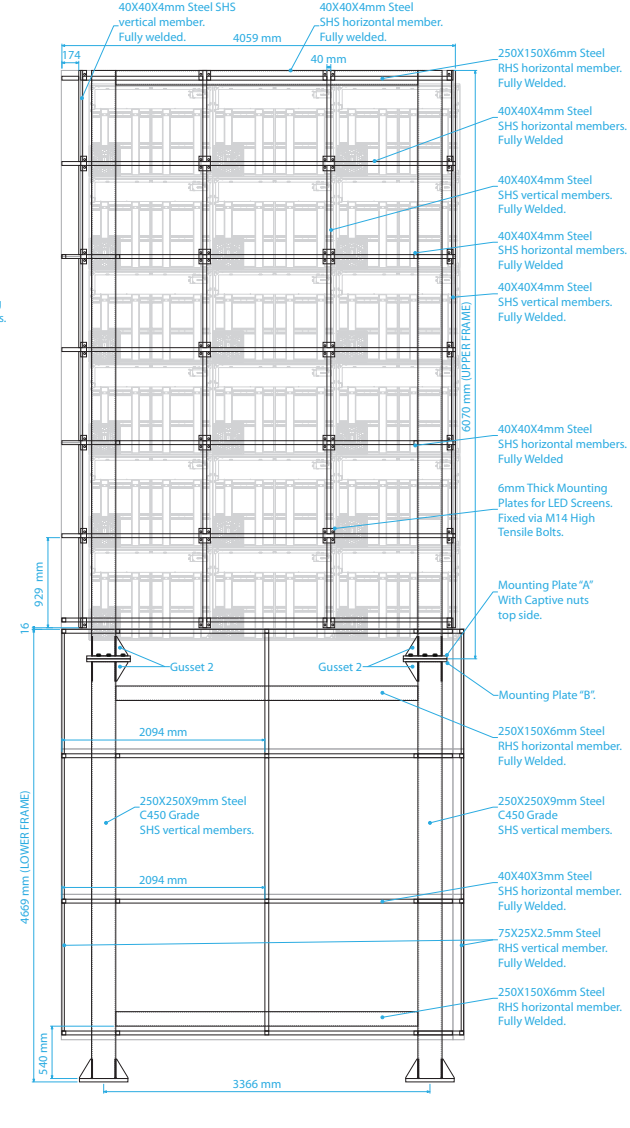
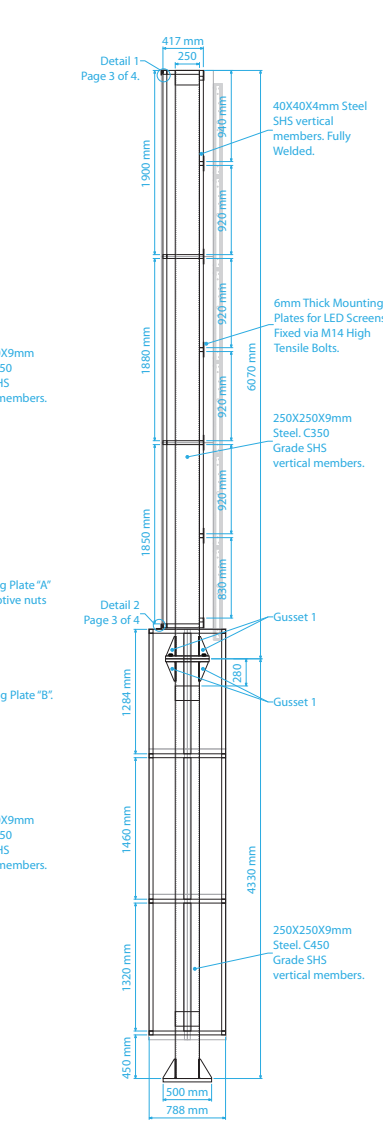
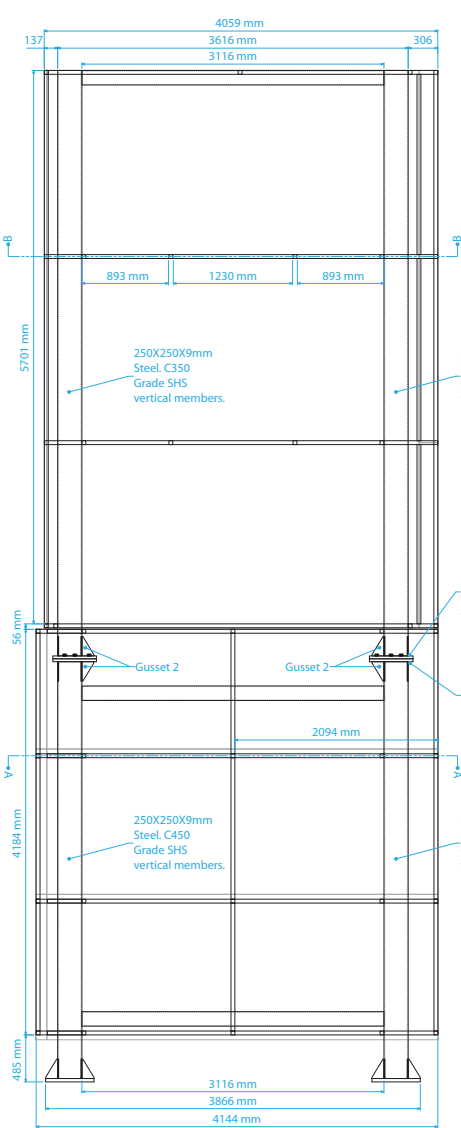
Item #
 1

Version #
 8

Date
 2019

Designer
 DT

Checked
 N/A

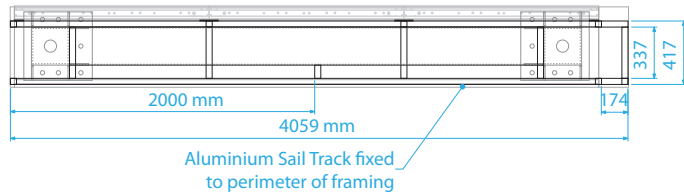


ROCKHAMPTON REGIONAL COUNCIL

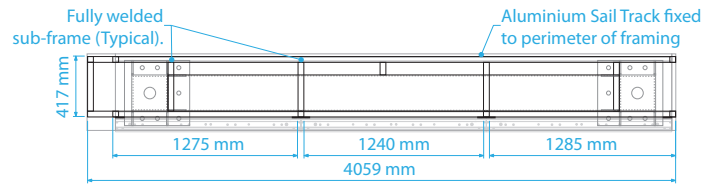
APPROVED PLANS

These plans are approved subject to the current conditions of approval associated with
Development Permit No.: D/54-2024
Dated: 1 August 2024

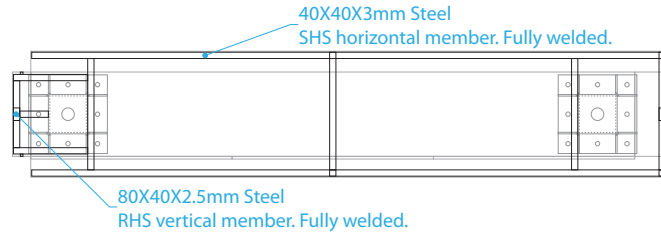
© All artwork remains the property of SignSite. Copyright is reserved by SignSite. Unless authorised by SignSite in writing, no reproduction or disclosure to any third party is permitted.



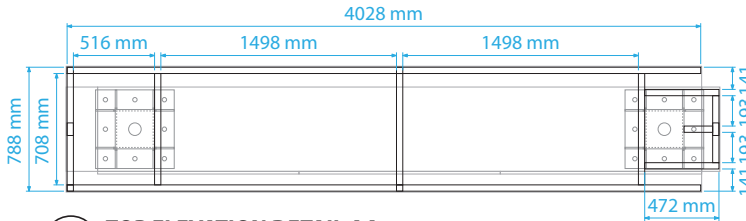
NTS 01 TOP ELEVATION DETAIL BB: INTERNAL FRAME OVERVIEW



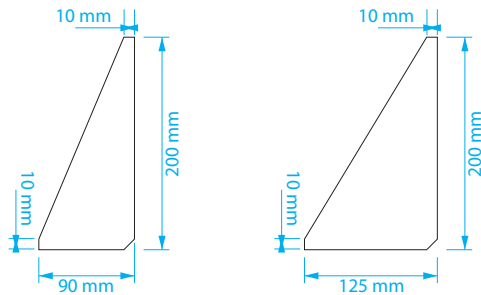
NTS 02 TOP ELEVATION DETAIL BB: INTERNAL FRAME OVERVIEW



NTS 03 TOP ELEVATION DETAIL AA: INTERNAL FRAME OVERVIEW

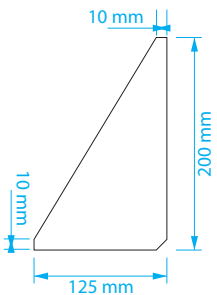


NTS 04 TOP ELEVATION DETAIL AA: INTERNAL FRAME OVERVIEW

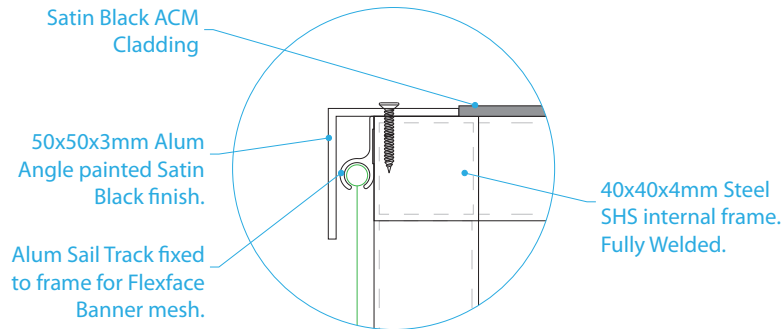


GUSSET 1. 4 PER MOUNTING PLATE
GUSSET 2. 2 PER MOUNTING PLATE

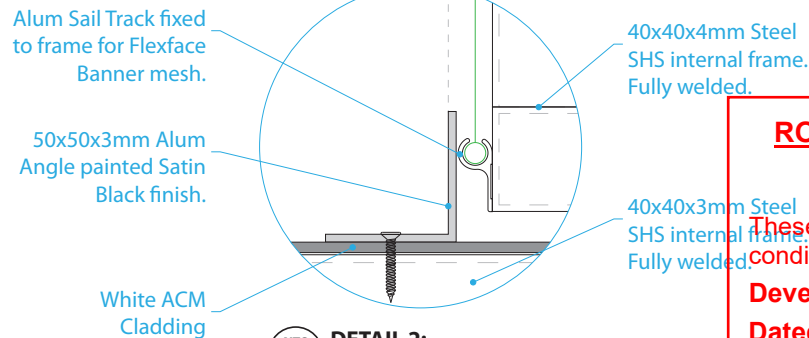
NTS 05 10mm GUSSET DETAIL FOR MOUNTING PLATES "A" & "B": GENERAL OVERVIEW:



NTS 06 10mm GUSSET DETAIL: 8 PER BASE PLATE



NTS 07 DETAIL 1: SECTIONAL OVERVIEW



NTS 08 DETAIL 2: SECTIONAL OVERVIEW

Colours
 - CMYK: None Specified.
 - Orange: PMS 167C.
 - White.
 - Black.

Materials
 - 250x250x9mm Steel SHS. (C450 Grade lower. C350 Grade Upper).
 - 250x150x6mm Steel RHS
 - 40x40x3mm Steel SHS.
 - 40x40x4mm Steel SHS.
 - 75x25x2.5mm Steel RHS.
 - 50x50x3mm Aluminium Angle.
 - 20x20x1.6 Aluminium Angle.
 - 30mm Steel Mounting Plates.
 - 35mm Steel Baseplates.
 - 10mm Steel Gussets.
 - 6mm Steel Mounting Plates.
 - 4mm ACM

Description
 - Proposed Pylon design and overall dimensions including N6 series.
 SMD3535 Wide Viewing Angle:
 Horizontal 140 deg / Vertical 140 deg.

Quantity 1 (Single Sided)
 Page 3 of 6

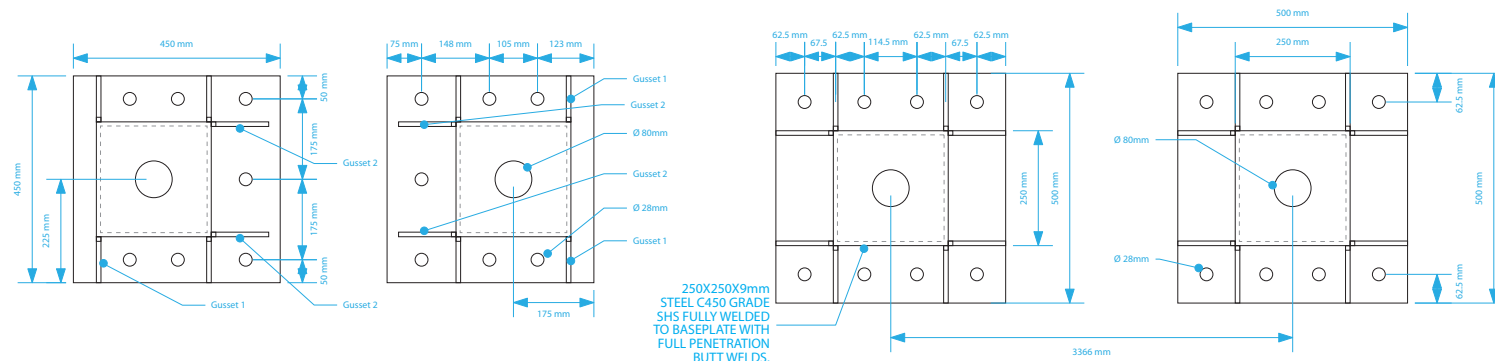
Scale
 NOT TO SCALE

File Location
 MYCLOUDPR4100\Public\Jobs\NnkSpin\26746 - Digital Pylon for Tropical Auto Group - Rockhampton\5 - Proofs

Client
 Tropical Auto Group
 - Rockhampton
 Project
 Digital Pylon
 Work Order #
 26746
 Item #
 1
 Version #
 8
 Date
 2019
 Designer
 DT
 Checked
 N/A

ROCKHAMPTON REGIONAL COUNCIL
APPROVED PLANS
 These plans are approved subject to the current conditions of approval associated with
Development Permit No.: D/54-2024
Dated: 1 August 2024

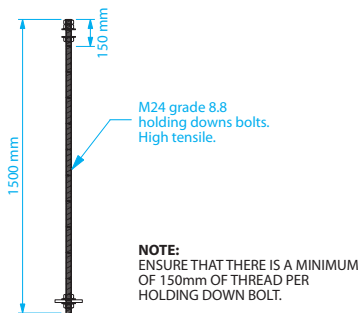
© All artwork remains the property of SignSite. Copyright is reserved by SignSite. Unless authorised by SignSite in writing, no reproduction or disclosure to any third party is permitted.



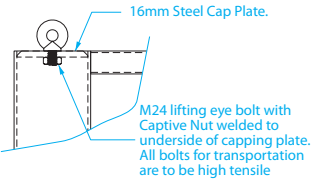
01 NTS 30mm MOUNTING PLATES "A" & "B":

NOTE: MOUNTING PLATES "A" TO HAVE CAPTIVE NUTS TOP SIDE. (M24 8.8 BOLTS).

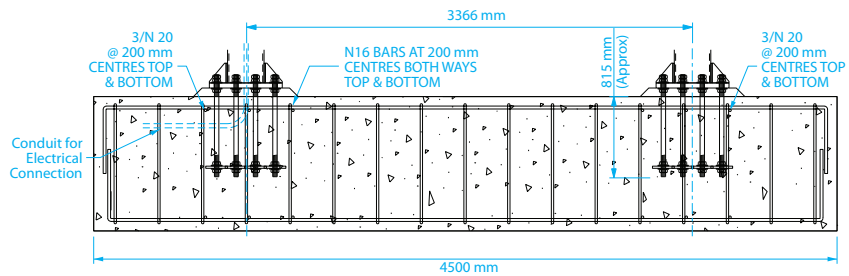
02 NTS 35mm BASEPLATES: GENERAL OVERVIEW



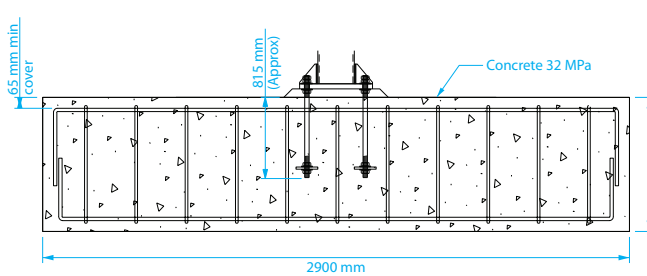
03 NTS HOLDING DOWN BOLTS: GENERAL OVERVIEW



04 NTS EYE BOLT DETAILS: GENERAL OVERVIEW



05 NTS PAD FOOTING DETAILS: GENERAL OVERVIEW FRONT ELEVATION



06 NTS PAD FOOTING DETAILS: GENERAL OVERVIEW SIDE ELEVATION

GENERAL
 G1 These drawings shall be read in conjunction with all architectural and other Consultant's drawings and specifications and with such other written instructions as may be issued during the course of the contract. All discrepancies shall be referred to the Project Manager for decision before proceeding with the work.
 G2 All dimensions relevant to setting out and off-site work shall be verified by the Contractor before construction and fabrication is commenced. The Engineers drawings shall not be scaled.
 G3 During construction the Contractor shall be responsible for maintaining the structure in a stable condition and ensuring no part shall be overstressed under construction activities.
 G4 Workmanship and materials are to be in accordance with the relevant current S.A.A. codes including all amendments, and the local statutory authorities, except where varied by the contract documents.
 G5 All dimensions are in millimetres unless stated otherwise.

FOUNDATIONS
 F1 All footing's shall be based on original undisturbed ground with a safe bearing capacity of 100kPa.
 F2 All foundations must be inspected and approved by the relevant Building authority before the concrete is poured.
 F3 Bored Pier Footings
 Bored pier footing's are to be founded in an original undisturbed and normally consolidated uniform cohesive soil strata with the following properties:
 (a) A minimum average undrained shear strength over the full depth of the pier of 75 kPa.
 (b) A minimum bearing capacity of 50 kPa at base of pier.
 (c) A minimum bearing capacity of 100 kPa to at least one half the depth of pier.
 Before any concrete is placed these properties shall be verified by a qualified Engineer. Results reported and submitted to the project manager. Where the soil strata varies from the above requirements, bored pier footing's shall not be constructed. Bored piers shall be constructed to a positional tolerance of + - 75mm.

REINFORCED CONCRETE
 C1 All reinforced concrete drawings shall be read in conjunction with Australian Standard AS 4100 and the reinforced concrete specification.
 C2 Unless noted otherwise concrete shall be as stated below:
 Foundation Fc (28 days)= 32 MPa with a maximum water/cement ratio of 0.45 with type D cement (sulphate resisting). Blinding concrete Fc (28 days)=15 MPa with type D cement (sulphate resisting).
 C3 Grout for baseplates shall be Embecco 880A or an approved equivalent.
 C4 Reinforcement to all structures shall comply with AS 1302,1303 and 1304, to the following grades.
 N: Hat rolled deformed bars grade-400Y
 R: Plain round bars of structural grade-250R
 F: Hard drawn wire fabric grade 450F
 W: hard drawn steel wire grade-450W
 C5 Minimum cover (mm) to all reinforcement unless otherwise shown shall be 60 mm.
 C6 Reinforcement is shown diagrammatically and not necessarily in true projection. All hooks and bends shall comply with AS 3600.
 C7 Welding or heating of reinforcement shall not be permitted unless shown on the structural drawings. Splices in mesh reinforcement shall be a minimum overlap between outermost transverse wire of not less than the spacing of those wires plus 25mm.
 C8 Surfaces receiving grout shall be left rough and free from laitance.
 C9 All anchor bolts to be cast into concrete shall be galvanised mild steel U.N.O.

STEELWORK
 S1 All structural steelwork shall be in accordance with the relevant specifications with Australian Standard AS 1530 and the structural steelwork specifications.
 S2 Unless noted otherwise Welds to be 6.0mm continuous fillet and follow with approved covered electrode.
 S3 TYPICAL ANCHOR BOLTS TO BE M24 4.6 denotes 24 diameter mild steel bolts (Structural) to be tightened using a standard wrench to a "snug tight" condition. The minimum torque to be provided.

Colours
 - CMYK: None Specified.
 - Orange: PMS 167C.
 - White.
 - Black.

Materials
 - 250x250x9mm Steel SHS. (C450 Grade lower. C350 Grade Upper).
 - 250x150x6mm Steel RHS
 - 40x40x3mm Steel SHS.
 - 40x40x4mm Steel SHS.
 - 75x25x2.5mm Steel RHS.
 - 50x50x3mm Aluminium Angle.
 - 20x20x1.6 Aluminium Angle.
 - 30mm Steel Mounting Plates.
 - 35mm Steel Baseplates.
 - 10mm Steel Gussets.
 - 6mm Steel Mounting Plates.
 - 4mm ACM

Description
 - Proposed Pylon design and overall dimensions including N6 series. SMD3535 Wide Viewing Angle. Horizontal 140 deg / Vertical 140 deg.

Quantity	Page
1 (Single Sided)	4 of 6

Scale
 NOT TO SCALE

File Location
 MYCLOUDPR4100\Public\Jobs\NnkSpin\26746 - Digital Pylon for Tropical Auto Group - Rockhampton\5 - Proofs

Client
 Tropical Auto Group - Rockhampton

Project
 Digital Pylon

Work Order #
 26746

Item #
 1

Version #
 8

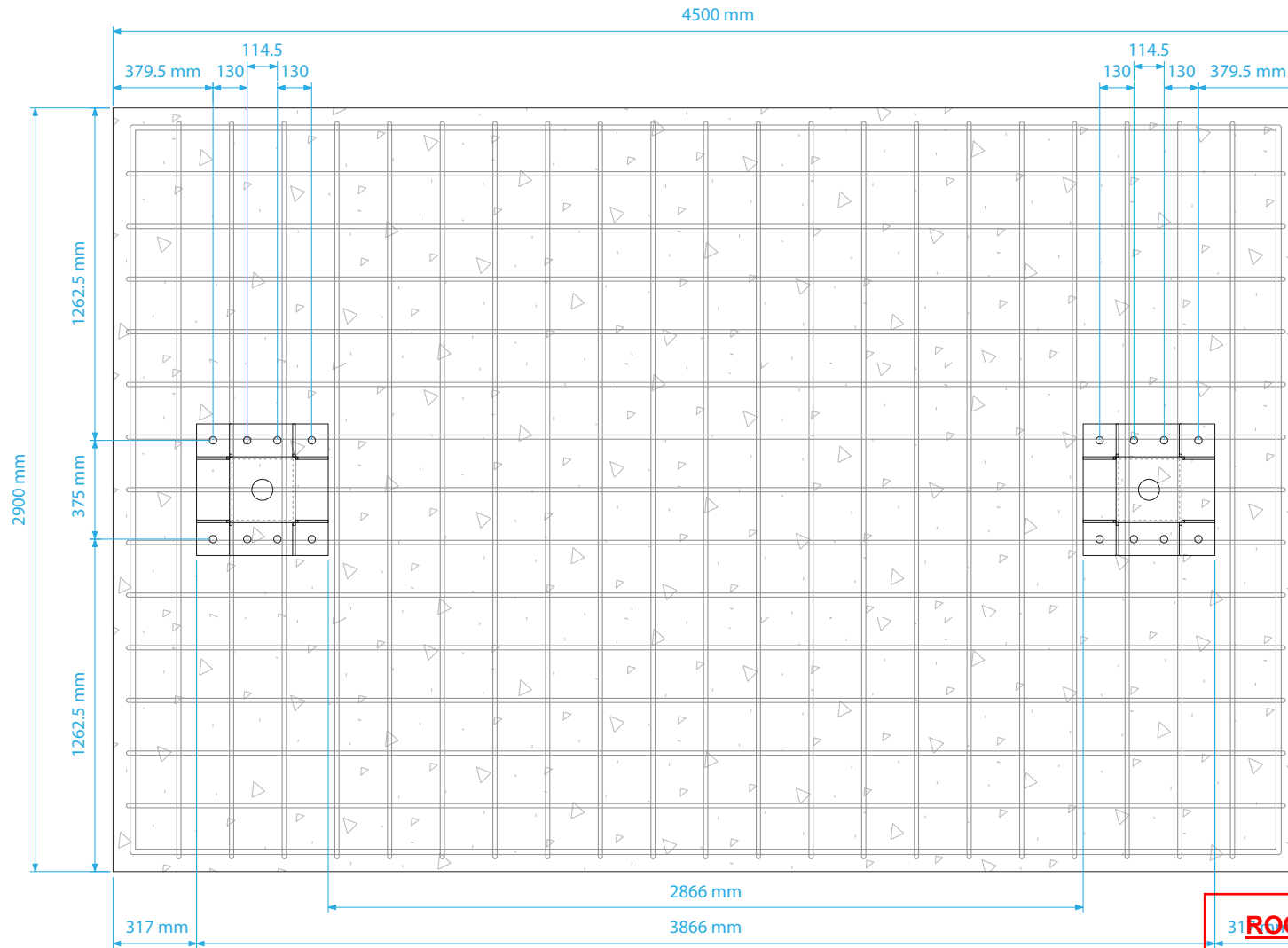
Date
 2019

Designer
 DT

Checked
 N/A

ROCKHAMPTON REGIONAL COUNCIL
APPROVED PLANS
 These plans are approved subject to the current conditions of approval associated with Development Permit No.: D/54-2024
Dated: 1 August 2024

© All artwork remains the property of SignSite. Copyright is reserved by SignSite. Unless authorised by SignSite in writing, no reproduction or disclosure to any third party is permitted.




PAD FOOTING DETAILS:
 GENERAL OVERVIEW
 PLAN ELEVATION

Colours

- CMYK: None Specified.
- Orange: PMS 167C.
- White.
- Black.

Materials

- 250x250x9mm Steel SHS. (C450 Grade lower. C350 Grade Upper).
- 250x150x6mm Steel RHS
- 40x40x3mm Steel SHS.
- 40x40x4mm Steel SHS.
- 75x25x2.5mm Steel RHS.
- 50x50x3mm Aluminium Angle.
- 20x20x1.6 Aluminium Angle.
- 30mm Steel Mounting Plates.
- 35mm Steel Baseplates.
- 10mm Steel Gussets.
- 6mm Steel Mounting Plates.
- 4mm ACM

Description

- Proposed Pylon design and overall dimensions including N6 series.
- SMD3535 Wide Viewing Angle:
- Horizontal 140 deg / Vertical 140 deg.

Quantity	Page
1 (Single Sided)	5 of 6

Scale
NOT TO SCALE

File Location
MYCLOUDPR4100\Public\Jobs\NnkSpin
V26746 - Digital Pylon for Tropical Auto
Group - Rockhampton\5 - Proofs

Client
Tropical Auto Group
- Rockhampton
Project
Digital Pylon
Work Order #
26746

Item #
1
Version #
8
Date
2019
Designer
DT
Checked
N/A

ROCKHAMPTON REGIONAL COUNCIL
APPROVED PLANS
 These plans are approved subject to the current conditions of approval associated with
Development Permit No.: D/54-2024
Dated: 1 August 2024

© All artwork remains the property of SignSite. Copyright is reserved by SignSite. Unless authorised by SignSite in writing, no reproduction or disclosure to any third party is permitted.

IMPORTANT NOTICE

Although every care is taken to ensure that the layout in this artwork is accurate, Signsite will accept no responsibility for incorrect information or spelling errors after receiving your design approval. So please take extra care in checking all info, including colours, sizes, quantities, etc. We will endeavour to match your colour to our best ability, however due to the limitation of the technology we cannot guarantee a perfect match. Thank you.



INSTALLATION NOTES:

- 16MM DOWELS AT 300MM CENTRES.
DIRECT 150MM EMBEDMENT MINIMUM.



INSTALLATION NOTES:

- 16MM DOWELS AT 300MM CENTRES.
DIRECT 150MM EMBEDMENT MINIMUM.

Colours
 - CMYK: None Specified.
 - Orange: PMS 167C.
 - White.
 - Black.

Materials
 - 250x250x9mm Steel SHS. (C450 Grade lower. C350 Grade Upper).
 - 250x150x6mm Steel RHS
 - 40x40x3mm Steel SHS.
 - 40x40x4mm Steel SHS.
 - 75x25x2.5mm Steel RHS.
 - 50x50x3mm Aluminium Angle.
 - 20x20x1.6 Aluminium Angle.
 - 30mm Steel Mounting Plates.
 - 35mm Steel Baseplates.
 - 10mm Steel Gussets.
 - 6mm Steel Mounting Plates.
 - 4mm ACM

Description
 - Proposed Pylon design and overall dimensions including N6 series.
 SMD3535 Wide Viewing Angle:
 Horizontal 140 deg / Vertical 140 deg.

Quantity	Page
1 (Single Sided)	6 of 6

Scale
 NOT TO SCALE

File Location
 MYCLOUDPR4100\Public\Jobs\NnkSpin
 \26746 - Digital Pylon for Tropical Auto
 Group - Rockhampton\5 - Proofs

Client
 Tropical Auto Group
 - Rockhampton
 Project
 Digital Pylon
 Work Order #
 26746

Item #
 1
 Version #
 8
 Date
 2019
 Designer
 DT
 Checked
 N/A

ROCKHAMPTON REGIONAL COUNCIL

APPROVED PLANS

These plans are approved subject to the current conditions of approval associated with

Development Permit No.: D/54-2024

Dated: 1 August 2024

© All artwork remains the property of SignSite. Copyright is reserved by SignSite. Unless authorised by SignSite in writing, no reproduction or disclosure to any third party is permitted.

IMPORTANT NOTICE

Although every care is taken to ensure that the layout in this artwork is accurate, Signsite will accept no responsibility for incorrect information or spelling errors after receiving your design approval. So please take extra care in checking all info, including colours, sizes, quantities, etc. We will endeavour to match your colour to our best ability, however due to the limitation of the technology we cannot guarantee a perfect match. Thank you.