



ORDINARY MEETING

AGENDA

7 FEBRUARY 2017

Your attendance is required at an Ordinary meeting of Council to be held in the Council Chambers, 232 Bolsover Street, Rockhampton on 7 February 2017 commencing at 9.00am for transaction of the enclosed business.

A handwritten signature in black ink, appearing to be "C. R.", written in a cursive style.

CHIEF EXECUTIVE OFFICER
2 February 2017

Next Meeting Date: 21.02.17

Please note:

In accordance with the *Local Government Regulation 2012*, please be advised that all discussion held during the meeting is recorded for the purpose of verifying the minutes. This will include any discussion involving a Councillor, staff member or a member of the public.

TABLE OF CONTENTS

ITEM	SUBJECT	PAGE NO
1	OPENING.....	1
2	PRESENT	1
3	APOLOGIES AND LEAVE OF ABSENCE	1
4	CONFIRMATION OF MINUTES.....	1
5	DECLARATIONS OF INTEREST IN MATTERS ON THE AGENDA	1
6	BUSINESS OUTSTANDING	2
	NIL	2
7	PUBLIC FORUMS/DEPUTATIONS	3
	NIL	3
8	PRESENTATION OF PETITIONS.....	4
	NIL	4
9	COMMITTEE REPORTS.....	5
	NIL	5
10	COUNCILLOR/DELEGATE REPORTS	6
	NIL	6
11	OFFICERS' REPORTS	7
11.1	QUOTE CONSIDERATION PLAN	7
11.2	ROCKHAMPTON RECREATIONAL FISHING DEVELOPMENT STRATEGY UPDATE NO.1.....	11
11.3	SUBMISSION TO TRANSITIONING REGIONAL ECONOMIES STUDY	32
11.4	STATE GOVERNMENT WORKS FOR QUEENSLAND PROGRAM - REPORT DETAILS OF THE FACILITY UPGRADES PROJECT	51
12	NOTICES OF MOTION	54
	NIL	54
13	QUESTIONS ON NOTICE	55
	NIL	55
14	URGENT BUSINESS/QUESTIONS	56
15	CLOSED SESSION	57

16.1	REQUEST FOR PRIVATE FUNCTION (WEDDING RECEPTION) ON QUAY STREET	57
16.2	MONTHLY REPORT FROM CHIEF EXECUTIVE OFFICER FOR PERIOD ENDING MONDAY 30 JANUARY 2017	57
16	CONFIDENTIAL REPORTS.....	58
16.1	REQUEST FOR PRIVATE FUNCTION (WEDDING RECEPTION) ON QUAY STREET	58
16.2	MONTHLY REPORT FROM CHIEF EXECUTIVE OFFICER FOR PERIOD ENDING MONDAY 30 JANUARY 2017	59
17	CLOSURE OF MEETING.....	60

1 OPENING

The opening prayer to be presented by Reverend Narelle Kidson from St Andrew's Anglican Parish, Gracemere.

2 PRESENT

Members Present:

The Mayor, Councillor M F Strelow (Chairperson)
Councillor R A Swadling
Councillor N K Fisher
Councillor A P Williams
Councillor C E Smith
Councillor C R Rutherford
Councillor M D Wickerson
Councillor S J Schwarten

In Attendance:

Mr E Pardon – Chief Executive Officer

3 APOLOGIES AND LEAVE OF ABSENCE

4 CONFIRMATION OF MINUTES

Minutes of the Ordinary Meeting held 24 January 2017

Minutes of the Special Meeting held 31 January 2017

5 DECLARATIONS OF INTEREST IN MATTERS ON THE AGENDA

6 BUSINESS OUTSTANDING

Nil

7 PUBLIC FORUMS/DEPUTATIONS

Nil

8 PRESENTATION OF PETITIONS

Nil

9 COMMITTEE REPORTS

Nil

10 COUNCILLOR/DELEGATE REPORTS

Nil

11 OFFICERS' REPORTS

11.1 QUOTE CONSIDERATION PLAN

File No:	5883
Attachments:	1. Quote Consideration Plan
Authorising Officer:	Ross Cheesman - Deputy Chief Executive Officer
Author:	Tracy Sweeney - Manager Workforce and Strategy

SUMMARY

This report seeks Council approval of the quote consideration plan for online and print recruitment and general advertising for Council.

OFFICER'S RECOMMENDATION

THAT Council approves the Quote Consideration Plan in accordance with s230 of the Local Government Regulation.

COMMENTARY

Council is required to advertise positions that become vacant in order to fill the positions and have a fully functioning workforce to meet organisational requirements. Advertising for each position is determined by the panel chairperson in consultation with Workforce & Strategy.

The type of advertising is determined on target audience/profession, market shortages, urgency, cost and the success of recent campaigns. The most frequently used options for advertising are: Seek, The Morning Bulletin, Local Government Job Directory, Facebook, and LinkedIn.

It is not cost or time effective to obtain individual quotations from various advertising providers nor is it advisable to advertise with the cheapest provider as targeted advertising based on the position type is more beneficial and results in more effectively reaching the appropriate candidate market.

The attached Quote Consideration Plan outlines the various suppliers used for advertising vacant positions and general Council news via online and print service providers.

The Quote Consideration Plan does not include recruitment and other general advertising in The Morning Bulletin (APN) as they are part of the panel arrangement for Tender 11637 – RPQS for the Provision of Marketing, Promotions, Advertising and Media Services.

Whilst these suppliers listed on the plan are not considered as sole suppliers for the services they provide, they are specialists in their field and provide the best value for Council. Obtaining quotes from competing suppliers would be impractical and inefficient for the services provided.

BUDGET IMPLICATIONS

Associated advertising costs for recruitment are included in the 16/17 Budget.

LEGISLATIVE CONTEXT

The Quote Consideration Plan has been prepared under Div 3 s230 of the Local Government Regulation – Exceptions for medium-sized and large-sized contractual arrangements.

CONCLUSION

Council requires the most suitable applicants to be appointed to vacant positions. Focused advertising is necessary to ensure Council reaches the appropriate candidate market. Approval is being sought for the Quote Consideration Plan to allow the nominated advertising vendors to be deemed specialised or sole suppliers in accordance with Sections 235 (a) and (b) of the Local Government Regulation 2012.

QUOTE CONSIDERATION PLAN

Quote Consideration Plan

Meeting Date: 7 February 2017

Attachment No: 1

Quote Consideration Plan

Supplier	Detail & Process	Estimated annual expenditure
Seek	<p>Online recruitment advertising</p> <p>Seek is used to advertise recruitment vacancies at Rockhampton Regional Council.</p> <p>As Australia's number one job site, Seek reaches more candidates than any other web site. With over 26 million jobseekers on Seek each month the website is well placed to attract suitable candidates for positions at Council.</p> <p>Seek has historically been used at Council to advertise and fill positions and has returned very positive success rates. Council utilises StandOut advertisements for high level and hard to fill positions which also ensures our brand is seen on mobile devices.</p> <p>There are platforms that offer similar services to Seek but none with the same success rate and exposure as Seek.</p>	\$25,000
LinkedIn	<p>Online recruitment and general advertising</p> <p>Paid LinkedIn advertising is mostly utilised by Council to promote industry specific vacancies. We utilise LinkedIn self-service ads to target and reach more than 450 million professionals worldwide. We can also exclusively target the people who work in a particular company, have particular skills or work in a particular industry.</p> <p>We also sponsor updates (news posts) on our company page to promote key Council milestones or projects to our professional network.</p> <p>There is no other professional social media platform for targeted recruitment advertising.</p>	\$5,000
Local Government Job Directory	<p>Online and print recruitment advertising</p> <p>Local Government Job Directory is used to advertise job vacancies at Rockhampton Regional Council. The job directory is up to 70% cheaper than major newspapers and offers targeted advertising direct to Local Government professionals.</p> <p>The directory offers unmatched distribution to all states, all Councils, and a broad coverage of Local Government and semi-government authorities.</p> <p>At present it is the only weekly Local Government job publication in print, online, email, and social media.</p>	\$5,000

Supplier	Detail & Process	Estimated annual expenditure
Facebook	<p data-bbox="544 293 783 315">Online general advertising</p> <p data-bbox="544 344 1046 477">Facebook paid advertising is used for promoting key Council projects, events and community updates to our local audience. While unpaid posts reach our 12,000 followers, paid advertising increases the reach across our entire region.</p> <p data-bbox="544 506 1046 797">As opposed to print, radio and TV advertising social media advertising is very targeted. With seemingly endless demographics, behaviours, and interests, the most powerful feature of Facebook's advertising platform is by far its targeting capabilities which Council uses regularly. For a very small budget (eg. \$24), you can reach thousands of people that meet incredibly specific targeting criteria. With multiple bid types available, you can choose the most appropriate bidding structure for your campaign objectives which result in great return on investment.</p> <p data-bbox="544 826 1046 904">At present there is no competing social media network where we could achieve the results we have through paid Facebook advertising.</p>	\$17,000

11.2 ROCKHAMPTON RECREATIONAL FISHING DEVELOPMENT STRATEGY UPDATE NO.1

File No:	8026
Attachments:	1. Improving Recreational Angling in the Mt Morgan No 7 Dam Project 2. Crystal Bowl Monitoring Program Proposal
Authorising Officer:	Peter Kofod - General Manager Regional Services
Author:	Wade Clark - Community Engagement Officer

SUMMARY

The Rockhampton Recreational Fishing Development Strategy has had early success with the State Government announcing the funding of a four lane boat ramp and pontoon at North Rockhampton. Most of the 35 projects outlined in the strategy have also progressed, particularly environmental focused projects such fish habitat rehabilitation projects and monitoring programs. Request for funding from Council is being made through this report to partner in environmental programs in the Fitzroy River and the Mount Morgan No 7 Dam.

OFFICER'S RECOMMENDATION

THAT Council:

1. receives the report;
2. allocates \$91,000 over three years in the draft budget process to co-fund a joint project with the Department of Agriculture and Fisheries to improve recreational fishing through environmental fish habitat enhancements in the Mount Morgan No 7 Dam; and
3. allocates \$10,000 in the draft budget process to co-fund the Crystal Bowl Monitoring Program in the Fitzroy River, noting that this agreement will also permit Council to use the Crystal Bowl forecasting tools within its Rockhampton Regional Council's Fishing oriented webpages/digital space.

COMMENTARY

The Rockhampton Recreational Fishing Development Strategy (the Strategy) was endorsed by Council on 13 September 2016 and this strategy moved into immediate implementation.

Implementation of the Strategy

To implement the Strategy a taskforce engagement technique was employed. Three taskforce groups were established including: a Marine Infrastructure Taskforce Group, a Business & Marketing Taskforce Group and a Fishery & Catchment Management Taskforce group.

The membership on these groups is directed by the aim of the group. Groups generally include Councillors, Council officers, Natural Resource Management organisations, State Government representatives, user group representatives, business representatives, environmental groups and community representatives.

Innovative environmental projects seeking co-contribution

- Improving Recreational Angling in the Mt Morgan No.7 Dam Project (Attached No.1)

This project has been developed by the Department of Agriculture and Fisheries (DAF) with the Department seeking co-funding from the Council and the Fishing Research Development Corporation (FRDC) for its implementation. Dr Andrew Norris (DAF Senior Fisheries Biologist) will lead the project with Council as a key stakeholder in the review of the habitat enhancement plan.

DAF has selected four freshwater locations across Queensland that it proposes to implement projects of this type. Mount Morgan being one of these locations.

The aim of this project is to improve recreational angling through the implementation of fish habitat enhancements in the dam. This will provide shelter for a variety of fish as they go through their life cycles.

Habitat enhancements can include: fish hotels (made from timber), porcupine cribs (made from timber), brush habitats, tree habitats, rock habitats and PVC habitat structures. Note that the type of habitat used and the habitat enhancement sites would be discussed and agreed to with FRW and Council before implementation.

Implementing this project will assist the regular releases of fingerlings by the Mount Morgan Promotion and Development (MMPAD) group through the likelihood of increasing survival rates because of improved habitat.

Apart from improving the habitats that fish live in this innovative project aims to also increase angler based tourism in Mount Morgan and improve local amenity.

The target market from a tourism perspective would be both Grey Nomads and the niche market of Kayak / Canoe fishing. Mount Morgan would also be established as a back-up fishing location if wind speeds were excessive along the coast / river areas.

Budget

	Total operating	Requested from RRC	Other stakeholders (including FRDC)	DAF in-kind
Year 1	\$72,000	\$36,000	\$36,000	\$75,000
Year 2	\$51,000	\$26,000	\$25,000	\$62,000
Year 3	\$58,000	\$29,000	\$29,000	\$79,000
Total	\$181,000	\$91,000	\$90,000	\$216,000

It is proposed that the project commence in the 2017/18 financial year, with the project being implemented with the following milestones:

2017/18 Baseline surveys - spring

Development of a habitat enhancement plan

Habitat construction and installation

Post habitat enhancement survey 1 - autumn

2018/19 Post habitat enhancement survey 2 - spring

Habitat construction and installation - ongoing

Post habitat enhancement survey 3 - autumn

2019/20 Post habitat enhancement survey 4 – spring

Habitat construction and installation - ongoing

Post habitat enhancement survey 5 – autumn

Data analysis and final reporting

- Crystal Bowl Monitoring Program in the Fitzroy River (Attachment No.2)

The aim of this program is to monitor Barramundi, Threadfin and other key species within the Fitzroy River and Port Alma areas providing Council and the community with information on stocks through real time tracking and forecasting.

This program utilises a citizen science model to collect data from volunteer taggers and tagging groups such as Captag and Suntag.

The Crystal Bowl program has been in operation for seven years and seeks funding from a variety of sources. InfoFish has requested Council contribute \$10,000 with this year's program total being \$64,300.

Council will benefit from the financial contribution through:

- Obtaining independent information to help inform the Council, Fishery & Catchment Taskforce Group and the Local Fish Restocking Group of the fish stocks in the Fitzroy River and Port Alma areas.
- Providing key information to help direct the amount of marketing spend in promoting the Region as a Barramundi and King Threadfin destination in 2018 and 2019.
- Gaining access to Crystal Bowl online forecasting tools that can be used in marketing efforts through Council controlled web pages.
- Delivering on a key project within the Strategy – Fisheries Management Plan – Project: Independent Monitoring of Fish Stocks.

Update on all plans within the Strategy

Marine Infrastructure Plan - Future water based infrastructure such as boat ramps

Project	Update	Priority allocated
New North Rockhampton Boat Ramp	<ul style="list-style-type: none"> • Boat ramp and pontoon funded by the Department of Transport and Main Roads through the Marine Infrastructure Fund (DTMR) with an anticipated construction start timeframe of 2017/18. • DTMR will request Council to sign a deed of agreement to partner in the project with Council expected to fund the adjoining car park and associated facilities. • Council officers to discuss with DTMR and the Department of Natural Resources and Mines land tenure as the proposed boat ramp intersects a section of unallocated state land. 	Very High
Little Cum-Ingham Car and Trailer Parking Extension (Quay Street Boat Ramp)	<ul style="list-style-type: none"> • Detailed design for the extension of the car and trailer parking programmed for 2017/18. 	Very High
New/Relocated Port Alma Boat Ramp	<ul style="list-style-type: none"> • Discussions with the Gladstone Ports Corporation and DTMR are taking place in relation to draft concept plans and how to progress the project. • High level community consultation with local community outlining progress had been undertaken in 2016. 	Very High
Ski Gardens Boat Ramp	<ul style="list-style-type: none"> • Boat ramp and pontoon funded by the DTMR through the Marine Infrastructure Fund for construction in 2017/18. • Initial concept designs developed for the car park and parkland area adjacent to boat ramp. 	Medium
Fitzroy River Navigation Markers	<ul style="list-style-type: none"> • Initial discussions with the Harbour Master have taken place regarding river navigation, hazard markers and potential marine infrastructure. 	Medium

	<ul style="list-style-type: none"> The Harbour Master is in the process of designing a new mooring system to assist the development of marine infrastructure in the Fitzroy River. From initial discussions with the Harbour Master there are potential opportunities to establish additional moorings focusing on attracting sea faring travellers otherwise known as Blue Nomads. Additional moorings could also be used by the general public. A report will be developed for Council's consideration. 	
Improve facilities Larcombe Street Boat Ramp	<ul style="list-style-type: none"> Preliminary concept design programmed for 2019/20. 	Low

Marine Infrastructure Plan - Land Based Infrastructure such as fishing platforms

Project	Update	Priority allocated
North Rockhampton Fishing Platforms	<ul style="list-style-type: none"> Concept designs being drafted for Queens Park, Donovan Park and The Common (adjacent to the North Rockhampton Boat Ramp). Once developed concept designs will be reviewed by the Marine Infrastructure Taskforce group and the Harbour Master for comment. From initial discussions with the Rockhampton Youth Justice Service Centre (Department of Justice and Attorney General Department) a youth intervention program can be initiated to assist with small scale maintenance and construction projects to assist the fishing platforms program. A prioritisation process will also be undertaken to rank the order of development of all land based fishing platforms with a report to be developed for Council's consideration. 	Very High
South Rockhampton Fishing Platforms	<ul style="list-style-type: none"> Concept designs being drafted for Littler Cum-Ingham, Under the Neville Hewitt Bridge, Wharf Street (Depot Hill) and Gavial Creek. Concept designs to be reviewed by the Marine Infrastructure Taskforce group and the Harbour Master for comment. 	Very High
Outer Reaches Fishing Platforms	<ul style="list-style-type: none"> Preliminary concept designs programmed for 2017/18. 	High
Rockhampton City Jetty Upgrade	<ul style="list-style-type: none"> DTMR were notified through the Queensland Recreational Boating Facilities Demand Forecasting Study process that better jetty facilities were required in the Rockhampton Region for non-trailer loaded vessels. It is expected that findings from this study will be expected in the first quarter of the calendar year. A proposed site will be including in the Draft CBD Redevelopment Plan. 	High

Business Development and Support Plan

Project	Update	Priority allocated
Fishing Tourism Industry Partnership Program	<ul style="list-style-type: none"> • Initial engagement with a variety of Government Agencies (such as the Department of State Development) and appropriate stakeholders has taken place through the Business and Marketing Taskforce Group. • Further discussion of this program will be completed in February/March. 	Very High
Business Planning	<ul style="list-style-type: none"> • Various potential businesses that have approached Council have been provided service support with respect to Council plans, directions and local knowledge. • Potential business opportunities/gaps in the market place have been identified and fact sheets are being developed. Fishing Tour/Charter Operator fact sheet is being prioritised with additional facts sheets to be rolled out including, Fishing Lodges, Houseboats, BBQ Boats, boat leases etc... 	Very High
Business Development	<p><u>Reaney Street Boat Lease Proposal</u></p> <ul style="list-style-type: none"> • Currently the Fitzroy River has no boat lease for short term use which limits the recreational fishing tourism product. • Initial discussions with TMR have indicated that the Reaney Street Boat Ramp could potentially accommodate a boat lease arrangement. • It is envisaged that the parkland adjacent to the existing car park area could be used for the storage of vessels. As this would constitute a change of use a material change of use (MCU) process would need to take place. • A report on the subject will be developed for Council's consideration. 	Very High
Market Research	<ul style="list-style-type: none"> • Initial research on local fishing behaviour was completed in the Boating and Fishing Survey by Rockhampton Regional Council in 2016. • A market research study will be developed with the economic modelling project. 	High
Economic Modelling	<ul style="list-style-type: none"> • The aim of the project is to inform decision makers of the current economic benefits and the potential economic benefits from implementation of the Strategy. • This study could also be used to help track the economic progress of the Strategy as it is implemented. • There has been initial discussions with CQU on what would be required to create such a model. 	High
Tourism Development	<ul style="list-style-type: none"> • Some high level target markets have been identified such as sports fishers from Brisbane and the South East Corner however a significant amount of further 	High

	work is required to develop a seamless tourism experience.	
--	--	--

Marketing and Promotions Plan

Project	Update	Priority allocated
Strategic Marketing Plan	<ul style="list-style-type: none"> Development of a strategic marketing plan has begun including the development of a draft brand. Engagement with stakeholders on the brand story will be undertaken in the next month. It is imperative that the Strategic Marketing Plan and the implementation of Marine Infrastructure such as boat ramps occur hand in hand to ensure that the Region builds on tourist numbers whilst meeting their expectations. DAF allocated funding towards promoting the Net Free Zones when the regulation was put in place in 2015. Approaches to DAF are being made enquiring as to how the Council can access this funding. It is anticipated the Strategic Marketing Plan will be delivered in the April-June quarter of this year. 	Very High
Preliminary Digital campaign	<ul style="list-style-type: none"> Social media outside of Council's direct control is already starting to promote the Region's Barramundi and King Threadfin fishing. A tailored social media campaign will be prepared and delivered to build the Region's fishing branding in July-September. It is imperative that this be integrated into marketing platforms that have been endorsed and are to be delivered including OSCAR. 	Very High
Rockhampton Region Fishing / Barramundi website	<ul style="list-style-type: none"> Website pages are in development and are expected to be launched in February 2017. 	Very High
Rockhampton Region Barramundi / Threadfin marketing campaign	<ul style="list-style-type: none"> A significant marketing campaign in 2017 tailored to target markets and product development will be implemented. It is anticipated that this will occur in July-September quarter this year. 	High
Fitzroy River Fishing Tournaments	<ul style="list-style-type: none"> A variety of existing tournaments will take place in 2017 with potential tournaments being discussed. Existing tournaments include: the Bass Nation (September), Women That Fish (September) and Barra Bounty (October). Potential tournaments being discussed include: Family Fishing Tournament (April) and the Golden Gills (Mount Morgan). Note that Council has allocated \$20,000 in the 2016/17 budget for an additional Mount Morgan event. Further discussions on the Golden Gills tournament will be undertaken in February. 	High

Fisheries Management Plan

Project	Update	Priority allocated
Development of the Voluntary Code of Practice	<ul style="list-style-type: none"> • A draft voluntary code of practice has been developed in line with ecological sustainable practices. The main message of the code is to take a feed not a fridge full. • A communications plan is being developed to assist with the roll out of the voluntary code of practice. 	Very High
Fisheries Management Rule Change	<ul style="list-style-type: none"> • Subject to scientific investigation Council has requested (September 2016) that DAF considers a change to regulations allowing catch and release for Barramundi in the Rockhampton Net Free Zone (NFZ) including the freshwater side of the river during the closed season in areas that are well outside of spawning grounds. As any credible scientific investigation on whether this would have a detrimental impact on the fish stock is limited Council is seeking further research to be completed in this field. 	Very High
Compliance	<ul style="list-style-type: none"> • An adequate compliance program to safeguard fish stocks in the Fitzroy River and Port Alma is necessary. • Council has requested DAF increase the amount of fisheries compliance officers in the Region to ensure a significant deterrent. Another solution offered by Council to DAF is to increase powers to through an Indigenous Sea Rangers Program through the State Government. To be successful these Rangers would require: <ul style="list-style-type: none"> ▪ The powers of investigation and issuing fines from a fisheries perspective. ▪ Work with various stakeholders to implement fish habitat enhancement projects. ▪ The ability to undertake works to keep the river system clean. 	Very High
Independent monitoring of fish stocks	<ul style="list-style-type: none"> • The Fishery & Catchment Management Taskforce Group has reviewed all fish monitoring activities in the Fitzroy River and identified potential research gaps. • A recommendations list for the monitoring program has been created and is undergoing review by group members. Within the Strategy it is outlined that InfoFish be enabled as an independent agency to monitor barramundi and king threadfin stocks. This organisation has independently accrued \$54,300 for the research and is seeking \$10,000 from Council to undertake this research. The proposal attached (Attachment 2 RRC Crystal Bowl proposal) also allows the Council to utilise real time dashboards for use in the Rockhampton Region Barramundi website and for marketing purposes 	Very High

Operation: Take out Tilapia	<ul style="list-style-type: none"> It is noted by the Fishery & Catchment Taskforce Group that better monitoring efforts are required to assess the successfulness of tilapia eradication programs. Further discussions on advancing tilapia eradication programs will be undertaken. 	High
Education program	<ul style="list-style-type: none"> There has been initial work completed to scope out the type of education program to promote catchment sustainability and teaching of the importance of the fishery. 	High
Fisheries Management Plan	<ul style="list-style-type: none"> No work has been undertaken on a more formal Management Plan for the Capricornia area as the current focus is on developing a voluntary code of practice and engaging with the Department of Agriculture and Fisheries on the aims of the Strategy. 	High
Restocking program	<ul style="list-style-type: none"> It will be assessed after the wet season whether a restocking program above the barrage is needed for 2017. 	High

Freshwater and Estuary Ecology Plan

Project	Update	Priority allocated
Improving ecosystem health	<ul style="list-style-type: none"> DAF have developed a project proposal for the Rockhampton Regional Council called "Improving Recreational Angling in the Mt Morgan No.7 Dam". This project focuses on installing fish habitat enhancements in the dam to help improve the environment that fish live in. This would be delivered over a three year period with DAF leading the project. To ensure that there are no compromises to the dam wall integrity or water quality FRW will be engaged by DAF in the development of the habitat enhancement plan, this would also be brought to Council for adoption. Recent advocacy by Council has been undertaken to support local projects being led by other organisations in the areas of fish habitat research and fish habitat rehabilitation. 	Very High
Ecosystem Health Report	<ul style="list-style-type: none"> Council has noted supported for the Fitzroy River Partnership for River Health project 	High
Indigenous Sea Rangers	<ul style="list-style-type: none"> Initial meetings with the Department of Environment Heritage and Protection have been undertaken to explore the Indigenous Sea Ranger program. Through the Green paper on Fisheries Management Reform in Queensland Council recommended that DAF implement Indigenous Sea Rangers to assist with compliance efforts in the Fitzroy River and Keppel Bay areas. 	High

	<ul style="list-style-type: none"> Further investigations are being undertaken on how Council areas in Far North Queensland, Northern Territory and Western Australia engage with indigenous rangers. 	
Protecting important habitat areas	<ul style="list-style-type: none"> The State Government on the 30 September 2016 declared an extension to Fitzroy River Habitat Area. The size of this area is now 77,878 hectares. Council provided a letter of support to the extension noting that Council would seek to improve boat ramp areas to access the Fitzroy delta. This declaration is a major milestone in protecting a significant habitat area. The Fishery & Catchment Taskforce group will go through a mapping process to identify other important fish habitat areas in the Rockhampton Region. 	High
Urban waterway management	<ul style="list-style-type: none"> This project area aims to support projects/program that provide opportunities for the community to participate in improving urban waterway health. There has been meetings to discuss what role Council could play in this area and what projects to support. Further work is required in this area. 	High
Education	<ul style="list-style-type: none"> Initial meetings have been undertaken to explore education programs that increase community awareness regarding local ecosystems. Further meetings will take place with organisations such as the Fitzroy Basin Association to identify education gaps. 	High

BACKGROUND

The Queensland State Government in 2015 declared Net Free Zones (NFZ) in three locations across the State. The NFZ is a ban on the use of gill netting of fish in these areas.

The Fitzroy River and a significant proportion of Keppel Bay is one of three NFZs with the others being recently regulated in Mackay and Cairns.

This provides the Rockhampton Region with a unique opportunity to create a new tourism destination product for Central Queensland through recreational fishing tourism.

To take advantage of this opportunity, Council Officers developed a comprehensive strategy addressing infrastructure, marketing, business development, fisheries management and the ecology/environment. The Rockhampton Recreational Fishing Development Strategy was endorsed by Council on the 13 September 2016.

PREVIOUS DECISIONS

4 NOVEMBER 2015 INFRASTRUCTURE COMMITTEE RECOMMENDATION

That the Committee recommends Council proceed with the preparation of a Marine Infrastructure and Development Plan / Strategy.

Moved by: Councillor Fisher

Seconded by: Councillor Smith

MOTION CARRIED

9 JUNE 2016 COUNCIL RESOLUTION

THAT a community engagement process be undertaken for the Draft Rockhampton Region Recreational Fishing Development Strategy document.

Moved by: Councillor Williams

Seconded by: Councillor Fisher

MOTION CARRIED UNANIMOUSLY

13 SEPTEMBER 2016 ORDINARY COUNCIL MEETING

THAT Council adopts the Rockhampton Recreational Fishing Development Strategy.

THAT Council directs a draft implementation plan be finalised for the Rockhampton Recreational Fishing Development Strategy.

THAT Council approves the drafting of a boat ramp proposal for North Rockhampton by the Council to begin the Department of Transport and Main Roads project process.

THAT Council works in cooperation with the Gladstone Ports Corporation to develop a boat ramp proposal for the Port Alma area with an aim of submitting a boat ramp proposal to begin the Department of Transport and Main Roads project process.

Moved by: Councillor Williams

Seconded by: Councillor Wickerson

MOTION CARRIED

BUDGET IMPLICATIONS

The Improving Recreational Angling in the Mt Morgan No.7 Dam Project will cost Council \$91,000 over three financial periods (2017/18 - \$36,000, 2018/19 - \$26,000 and 2019/20 \$29,000) if approved through the draft budgeting process.

The Crystal Bowl Monitoring Program in the Fitzroy River will cost Council \$10,000 in 2017/18 if approved through the draft budgeting process.

STAFFING IMPLICATIONS

The proposed joint project with DAF to improve recreational fishing through environmental enhancements in the Mount Morgan No.7 Dam will require resources from FRW to review the habitat enhancement plan. The responsibility for the creation of this plan and its implementation will be with officers from DAF.

RISK ASSESSMENT

Assessment of potential habitat structures and sites in the Mount Morgan No.7 would firstly be completed by DAF officers before a review process completed by FRW. This will ensure that the dam integrity and water quality will be maintained.

CORPORATE/OPERATIONAL PLAN**Economy – Strategic Planning – Manage the strategic planning functions of Council**

Promote the sustainable development of natural and physical resources and the maintenance of ecological processes and genetic diversity.

Economy – Economic Development – Provide strategic development on regional matters

Collaborate with government agencies to identify and foster the development of new industries in the Region.

Living, Learning & Leisure – Parks & Open Space – Provide and maintain an open space parks network and recreation facilities

- *Plan for appropriate open space within the Region.*
- *Provide developmental programs for sporting and recreational groups.*

CONCLUSION

The Rockhampton Regional Council has cast the line to develop the recreational fishing tourism industry for the Region.

Whilst the iconic Barramundi and King Threadfin in the Fitzroy River is a major focus of the strategy opportunities across the Region to develop a diversified tourism product require investment.

The implementation of fish habitat enhancements in the Mount Morgan No.7 Dam is aimed at improving the environments that fish live in from an ecological sustainability point of view whilst improving recreational angling in Mount Morgan No.7 Dam.

The Dam provides a unique marketing proposition, the speed restrictions on the Dam can be utilised to an advantage through the marketing of the Dam for Kayak / Canoe fishing. This could be used as a lure for Grey Nomads who venture to Central Queensland for the Winter to spend time in Mount Morgan.

**ROCKHAMPTON RECREATIONAL
FISHING DEVELOPMENT STRATEGY
UPDATE NO 1**

**Improving Recreational Angling in the
Mt Morgan No 7 Dam Project**

Meeting Date: 7 February 2017

Attachment No: 1

Improving recreational angling in Mt Morgan Dam No. 7

Summary

- Goal: To improve recreational angling in Dam No. 7 at Mount Morgan
- Methods: Install habitat into the dam to provide structure for the fish and aggregate them for anglers Benefits to Rockhampton Regional Council include
 - increased angling based-tourism leading to greater spend in Mount Morgan and the greater Rockhampton Region
 - increased tourism expenditure in Mount Morgan
 - social benefits from better fishing for local anglers
 - extensive publicity and media about fishing and visiting the Mount Morgan and Rockhampton region
 - twice yearly surveys of dam fishery, angler catch rates and angling effort
 - actions complementary to the Rockhampton Recreational Fishing Strategy
 - co-investment by the Queensland Government

Improving fishing at Mount Morgan

Recreational angling in impoundments is increasing in popularity and generates significant social and economic benefits to regional communities. Awoonga Dam in central Queensland delivers more than \$10.4 million economic value to the local community each year. The great fishing in this dam draws in tourists from all over Queensland, interstate and overseas. Unfortunately the fisheries in many dams are not up to the same standard as Awoonga, with some poorer performing fisheries delivering far less to local economies. However, there is potential to improve the fishing in some dams.

A wide range of variables impact the success of an impoundment fishery, however one of the major limiting factors is the condition of the fish habitat. Since the majority of impoundments are not designed, built or operated with fisheries as a major consideration, structural habitat is often lacking. Additionally, as impoundments age the remnant habitat degrades over time. This habitat is vital to support strong fish communities and angling opportunities. The installation of fish habitat enhancement structures is capable of helping counter these issues. There is a convincing body of evidence from the USA that habitat enhancement in impoundments positively influences their fisheries. The recreational fishery in many USA dams has been significantly improved, or even completely revitalised through the strategic use of fish habitat enhancement techniques. This has led to significant improvements in the number of tourists visiting or utilizing these impoundments and resulted in flow on benefits to the local communities. Additionally, the installation of habitat to attract fish can help manage conflicts between different waterway user groups and improve fishing for shore-bound or mobility limited anglers. So far, little work has been conducted in this area in Australia.

Number 7 Dam at Mount Morgan on the Dee River is a small dam (~ 48 ha). It was originally constructed in 1900 but the wall height raised a further 4.5 m in 1999. The dam was initially

constructed to provide town water to Mount Morgan, but also provides a valuable recreational area for the local community. Water levels within the dam generally fluctuate gradually because the primary use is for town water supply. The dam is located in the hills at the top of the range and has a relatively small catchment area. There are two main arms within the dam with limited remnant structure and habitat for fish to utilize. A few areas contain steep rocky drop-offs, but the main basin is relatively featureless and has little aquatic vegetation.

Dam No. 7 is popular for swimming and lakeside recreation, but water-skiing is prohibited. There is currently a 6 knot speed limit in place for boats. Fishing is also popular, however angler catch rates are unknown and believed to be intermittent. The dam has had 31,000 golden perch (Fitzroy strain) stocked over the years, as well as low numbers of saratoga, sleepy cod and red claw. Eel-tailed catfish, spangled perch and banded grunter are also present. There have been no recent fish surveys, so the abundance of the fish population within the dam is unknown.

Strategically improving the structural habitat complexity within the dam will lead to improved fishing, improved tourism, and ultimately a greater spend from visitors within the Rockhampton region. More specifically, habitat enhancement could:

- Improve angler catch rates
- Improve shoreline angling
- Improve survival of stocked fingerlings

Habitat enhancement has been widely and successfully used by fishery managers in the USA to achieve similar goals (Norris 2016). We propose to utilise similar methods within Mount Morgan Dam No. 7 and then rigorously assess their impact on the fish population, angling catch rate, waterway use and tourism. This strategy would complement the recent ban on commercial net fishing in the Fitzroy River, in making Rockhampton a premier recreational fishing destination. Developing a great fishery in the dam would offer visiting anglers to the Rockhampton region a place to target highly desirable species when it's too windy to fish in the ocean or they feel like a change of scenery.

Methods

We propose to work together with Mount Morgan Promotion and Development Incorporated (MMPAD), other key stakeholders and the Rockhampton Regional Council to improve fishing in Dam No. 7 by increasing structural habitat complexity.

The first step will be to collect baseline data against which improvements can be evaluated. We will assess angler catch rates, angler effort, the fish assemblage, fish movements and existing habitat within the dam. This initial survey will provide data on where habitat can most suitably added to most cost effectively achieve the project's goals. The type and location of habitat enhancements will be determined in conjunction with MMPAD and the waterway manager, Fitzroy Water Authority. The baseline survey will also indicate the existing fish populations within the dam. A small amount of funding has been allocated to purchase Fitzroy strain golden perch fingerlings for release if fish stocks in the dam are found to be too low.

Once priority habitat areas have been identified, we will work with stakeholders to construct and deploy habitat structures in the priority areas. The goal of the habitat structures will be to help aggregate fish in the otherwise barren dam, increasing the likelihood of anglers catching them and

also helping direct angler pressure to specific areas of the dam. This will improve the fishing whilst at the same time reduce interactions between different waterway user groups such as swimmers. There may also be potential to create breeding habitat for sleepy cod and to establish habitat areas close to the launching point for canoe and kayak based anglers.

The use of habitat enhanced areas by anglers and their catch rates will be evaluated by creel surveys. The condition of habitat structures will be monitored using a combination of side-scan, down-scan and potentially DIDSON sonar techniques. If the water remains clear enough, visual surveys will also be conducted by divers and underwater cameras. The fish assemblage will be monitored through electrofishing surveys, sonar and targeted angling. If access to the DIDSON unit is possible, fish assemblages will also be assessed using this technique. It provides detailed, real-time information on the size and sometimes species of fish in front of the specialised sonar unit. If the equipment is available, the movement of fish and the effectiveness of the habitat structures at attracting fish will be compared with both a visual marking program (e.g. dart tags) and the use of acoustic telemetry. Establishing an acoustic telemetry array enables the two dimensional tracking of tagged fish over a broad area and will allow fine scale data to be collected on where fish are spending the most time. This will also allow us to determine the most effective structure type, depth and location combinations for local target species.

Surveys will be completed twice yearly for 3 years to assess the response of the fishery and anglers to the improved habitat complexity in the dams. We are also hoping to collect information on the expenditure of tourists visiting the dam to assess changes in the regional economic benefits.

Budget

The total operating budget required for the project is \$181,000 over 3 years. The goal is to share the budget across relevant stakeholders. The DAF in-kind contribution will consist of staff time, vessels, vehicles and other equipment. It is also anticipated that significant in-kind contributions will be made by the MMPAD and other interested angling groups. The Dam No. 7 project will form part of a larger program demonstrating the benefits of fish habitat enhancement in six impoundments across Queensland. If this larger program gets funded additional work may be able to be completed for the same cost or the budget requirements may be reduced slightly.

	Total operating	Requested from RRC	Other stakeholders	DAF in-kind
Year 1	\$72,000	\$36,000	\$36,000	\$75,000
Year 2	\$51,000	\$26,000	\$25,000	\$62,000
Year 3	\$58,000	\$29,000	\$29,000	\$79,000
Total	\$181,000	\$91,000	\$90,000	\$216,000

Timeline

It is proposed that the project commence in the 2017/18 financial year.

2017/18	Baseline surveys - spring Development of a habitat enhancement plan Habitat construction and installation Post habitat enhancement survey 1 - autumn
2018/19	Post habitat enhancement survey 2 - spring Habitat construction and installation - ongoing Post habitat enhancement survey 3 - autumn
2019/20	Post habitat enhancement survey 4 - spring Habitat construction and installation - ongoing Post habitat enhancement survey 5 – autumn Data analysis and final reporting

For further information, please contact:

Dr Andrew Norris
Senior Fisheries Biologist
Queensland Department of Agriculture and Fisheries
PO Box 2066, Woorim QLD 4507
email: andrew.norris@daf.qld.gov.au
mob: 0429 624 985

**ROCKHAMPTON RECREATIONAL
FISHING DEVELOPMENT STRATEGY
UPDATE NO 1**

**Crystal Bowl Monitoring Program
Proposal**

Meeting Date: 7 February 2017

Attachment No: 2



CRYSTAL BOWL MONITORING OF FITZROY RIVER NET FREE ZONE

As part of the Rockhampton Recreational Fishing Strategy Development Council has identified this as a very high priority under its key projects.

Independent Monitoring of Fish Stocks

- Independent assessment of Barramundi, Threadfin and other main species within the Fitzroy River and Port Alma catchment area
- Enable the independent agency InfoFish to monitor these species on regular basis using the Crystal Bowl
- Use data to tailor marketing and management year on year

PROJECT TITLE

Fitzroy Crystal Bowl 2017

PROJECT AIM

Monitor Barramundi, Threadfin and other key species within the Fitzroy River and Port Alma area and provide Council and the community with information on stocks through real time tracking and forecasting of trends in stocks in 2017.

STRATEGIES

1. Implement Infofish Crystal Bowl dashboards for key species to deliver monitoring information in real time to Council and the community through the Crystal Bowl website and providing links to Council websites
2. For Barramundi and King Threadfin provide forecasts for key fishery parameters in size of fish, catch rates, trends in stock and recruitment at the start (Feb) and end (Oct) of the Barramundi season in 2017
3. Expand data collection through the Infofish phone app TrackmyFish
4. Use the resources of volunteer taggers in Captag, Suntaggers and other taggers to collect the monitoring data
5. Undertake recruitment surveys for Barramundi to enable stock trends to be assessed and develop assessment of recruitment of Threadfin
6. Infofish will continue to work with RRC on the implementation of the Rockhampton Recreational Fishing Development Strategy

PROJECT BUDGET

FITZROY CRYSTAL BOWL BUDGET 2017	
TAGGERS VOLUNTARY CONTRIBUTION	
TAGGING 2,000 FISH @ \$25	\$50,000
TAGGERS VOLUNTARY CONTRIBUTION	\$50,000
INFOFISH CONTRIBUTION	
TRACKMYFISH PHONE APP	\$2,000
DATA MANAGEMENT	\$5,000
WEBSITES AND LINKAGES	\$3,000
CRYSTAL BOWL DASHBOARDS	\$2,000
INFOFISH CONTRIBUTION	\$12,000
RRC CONTRIBUTION	
DATA MANAGEMENT	\$1,000
RECRUITMENT SURVEYS (20 SURVEYS @\$300)	\$6,000
CRYSTAL BOWL DASHBOARDS	\$1,200
TAGS	\$1,800
RRC CONTRIBUTION	\$10,000
BILL BYRNE CONTRIBUTION	
PROJECT SUPPORT	\$500
BILL BYRNE CONTRIBUTION	\$500
PROJECT TOTAL	\$64,300
BENEFIT RATIO OF COUNCIL CONTRIBUTION	5.4:1

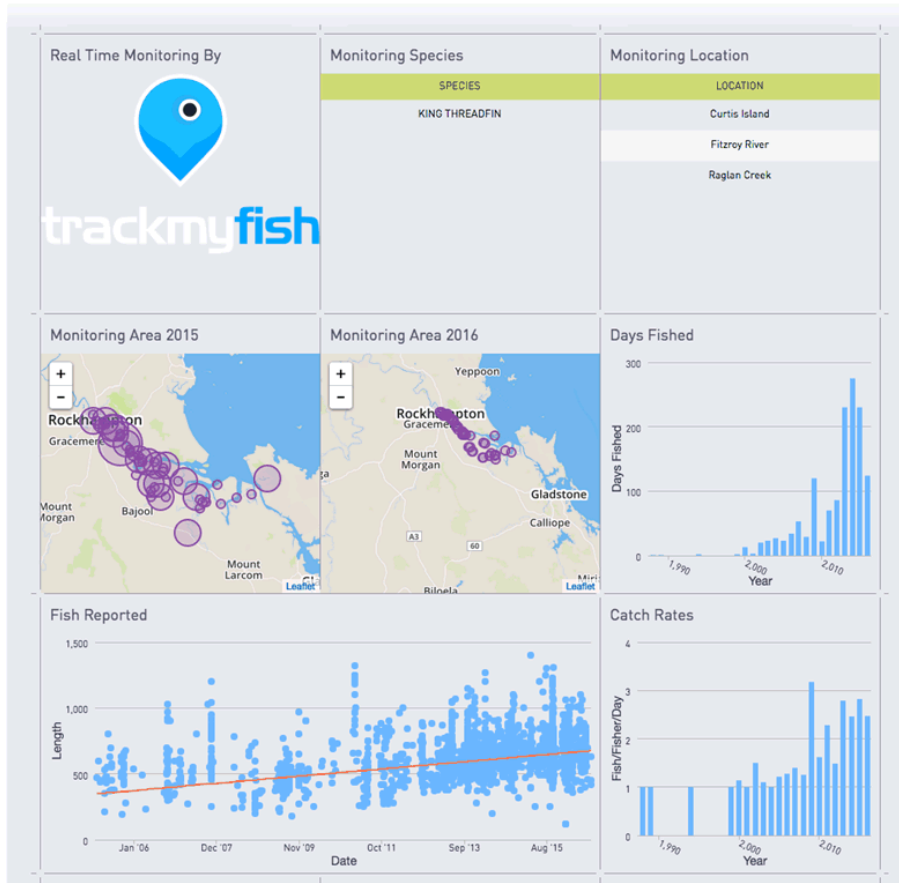
INFOFISH TRACK RECORD

1. Infofish has been in the business of collecting recreational fishing data for over 20 years and the Suntag database now has almost 1.25 million fish records
2. Infofish is a world leader in the use of technology for recreational fisheries data collection and data delivery
3. Infofish has established a data warehouse that can download fisheries and environmental data from anywhere in the world for use in assessing fisheries
4. In Queensland Infofish is monitoring through live tracking a total of 27 locations, providing a statewide overview of 20 species, other real time tracking and is forecasting for 3 species in 6 locations
5. Infofish is working with NT Fisheries, AFANT and fishing clubs in the NT and has established a Crystal Bowl for the Daly River as the first one outside Queensland

SAMPLE CRYSTAL BOWL DASHBOARD

Dashboards allow data collected to be displayed in real time. Dashboards can be set up to track any desired output (eg catch rates, days fished, catch mix, size or age profile etc). Below is a sample dashboard set up for Barramundi in the Fitzroy River. Graphs and maps can be viewed interactively. See www.suntag.org or www.crystal-bowl.com.au for examples of how dashboards have been set up.

Real Time Monitoring - Catch

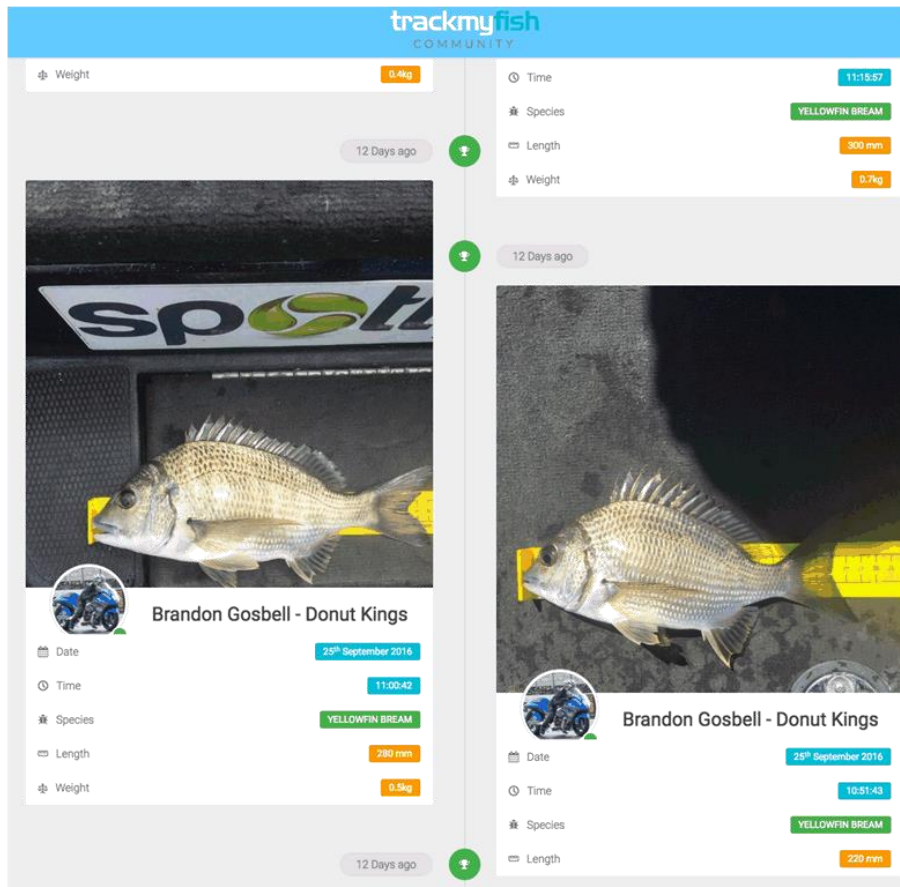


SAMPLE OF DATA COLLECTED THROUGH TRACKMYFISH PHONE APP

The TrackMYFish phone app can collect a range of fishing data from competitions, tagging and catch and can be adapted for environmental monitoring such as mangroves, sea grass etc. Below is a sample of data collected during a recent ABT tournament in Brisbane. It is not necessary to have mobile reception to use the app. It will store data until the phone is in reception and then automatically downloads the details. See <https://trackmy.fish> for more information.

Basically all that is necessary is to take a photo of the fish, enter the tag number (if tagged), length and species. Location is taken from the GPS chip and then converted to the map/grid.

For competitions it can be set up to automatically calculate points etc and have them displayed on a live scoreboard in real time. The app is available for iPhone and Android phones.



11.3 SUBMISSION TO TRANSITIONING REGIONAL ECONOMIES STUDY

File No:	2103
Attachments:	1. Terms of reference 2. Draft submission 3. Supporting tables and graphs
Authorising Officer:	Scott Waters - General Manager Regional Development and Aviation
Author:	Rick Palmer - Senior Executive Industry Engagement

SUMMARY

This report contains a draft submission to the Productivity Commission for the Transitioning Regional Economies Study.

OFFICER'S RECOMMENDATION

THAT Council:

- a) Adopt the draft submission; and
- b) Submit the submission to the Productivity Commission as its contribution to the Transitioning Regional Economies Study.

COMMENTARY

On 15 December 2016 the Federal Treasurer requested the Productivity Commission to undertake a study into the geographic impacts of the transition of the Australian economy following the resources investment boom. A copy of the terms of reference for this study are attached to this report.

Council has been asked if it wishes to make a submission to this study. A copy of a draft submission is attached to this report together with nine supporting tables and graphs.

Draft Submission

The draft submission concludes that the "Bowen Basin coal downturn started to impact the Rockhampton Region by 2012.

"Initially, the Region's diverse economy provided an effective buffer and impacts from the downturn, which had become very apparent in some of the nearby local authorities, were limited.

"By 2014, the impacts of the coal downturn were starting to be more widely felt and that obviously began to include the Rockhampton Region.

"Central Queensland media have run a succession of headlines and stories about job losses at Rockhampton resources service work sites such as Hastings Deering, QMAG and Aurizon.

"The downturn in Rockhampton Region has been documented as impacting in the following areas:

- Population growth
- Gross regional product
- Number of new jobs
- Unemployment rates
- House values
- Unit values
- House rents
- Unit rents
- Number of empty houses"

Request to Productivity Commission

The draft submission contains the following six requests for the Productivity Commission to seek from the Federal and Queensland Governments actions that:

- a) Reduce the complexity and time of gaining mining project approvals, while preserving consideration of stakeholders' interests;
- b) Reduce the time of making government decisions regarding mining projects;
- c) Help diversify the mining industry supply chain;
- d) Upgrade the Capricorn Highway, especially west of Emerald, as one of the main access routes to the Bowen and Galilee Basins;
- e) Upgrade the Rockhampton-Biloela road system to improve access to the Callide/Dawson Valleys; and
- f) Upgrade the May Downs Road to improve access to areas in the centre of the Bowen Basin.

SUBMISSION TO TRANSITIONING REGIONAL ECONOMIES STUDY

Terms of reference

Meeting Date: 7 February 2017

Attachment No: 1



Transitioning Regional Economies

Terms of reference

A study on the transition of regional economies following the resources boom.

I, Scott Morrison, Treasurer, pursuant to Parts 2 and 4 of the *Productivity Commission Act 1998*, hereby request that the Productivity Commission undertake a study into the geographic impacts of the transition of the Australian economy following the resources investment boom.

Background

The transition from the mining investment boom to broader-based growth is underway. This transition is occurring at the same time as our economy is reconciling the impacts of globalization, technological and environmental change.

By its nature, the geography of our economic transition will not be consistent across the country.

The combination of forces driving the transition of our economy will unavoidably create friction points in specific regional areas and localities across the country, while being the source of considerable growth and prosperity in others.

The different impacts across the geographic regions of the Australian economy occur because of variable factors such as endowments of natural resources and demographics. Some regions may also have limited capacity to respond to changes in economic conditions; for example, due to different policy or institutional settings.

Scope of the research study

The purpose of this study is to examine the regional geography of Australia's economic transition, since the mining investment boom, to identify those regions and localities that face significant challenges in successfully transitioning to a more sustainable economic base and the factors which will influence their capacity to adapt to changes in economic circumstances.

The study should also draw on analyses of previous transitions that have occurred in the Australian economy and policy responses as a reference and guide to analysing our current transition. The Commission should consult with statistical agencies and other experts.

In undertaking the study, the Commission should:

1. Identify regions which are likely, from an examination of economic and social data, to make a less successful transition from the resources boom than other parts of the country at a time when our economy is reconciling the impacts of globalization, technological and environmental change.
2. For each such region, identify the primary factors contributing to this performance. Identify distributional impacts as part of this analysis.
3. Establish an economic metric, combining a series of indicators to assess the degree of economic dislocation/engagement, transitional friction and local economic sustainability for regions across Australia and rank those regions to identify those most at risk of failing to adjust.
4. Devise an analytical framework for assessing the scope for economic and social development in regions which share similar economic characteristics, including dependency on interrelationships between regions.
5. Consider the relevance of geographic labour mobility including Fly-In/Fly-Out, Drive-In/Drive-Out and temporary migrant labour.
6. Examine the prospects for change to the structure of each region's economy and factors that may inhibit this or otherwise prevent a broad sharing of opportunity, consistent with the national growth outlook.

Process

The Commission is to undertake an appropriate public consultation process including consultation with Commonwealth, State and Territory governments, as well as local government where appropriate.

The final report should be provided within 12 months of the receipt of these terms of reference, with an initial report provided in April.

Scott Morrison
Treasurer

[Received 15 December 2016]

SUBMISSION TO TRANSITIONING REGIONAL ECONOMIES STUDY

Draft submission

Meeting Date: 7 February 2017

Attachment No: 2

**Submission from Rockhampton City Council
to the
Productivity Commission
on
Transitioning Regional Economies**

Rockhampton Regional Council is a Queensland local authority located at 272 Bolsover Street, Rockhampton. Rockhampton is positioned on the Fitzroy River, 45km from the Queensland coastline at Yeppoon and 700km north of Brisbane..

Rockhampton was first settled in 1853 and the Region has provided many of the goods and services used in the mines and on the farms in Central Queensland.

As part of its regional service role, Rockhampton has since the time of its first settlement been intimately involved with the resources sector.

Bowen Basin

In the 1960s the Queensland Government took the initial steps to open the Bowen Basin to widespread coal mining.

As part of this initiative the Queensland Government sought to open two ports through which Bowen Basin coal could be exported. Considerable competition developed between Gladstone and Port Alma, Rockhampton's port, as to which should be selected as the southern coal terminal.

When the Queensland Government finally announced that Gladstone had been chosen as the port site, Rockhampton Mayor Cr Rex Pilbeam and the City's business community withdrew from interaction with the coal mining sector.

Rockhampton continued as the major service centre for Central Queensland and as the base for a great deal of beef industry activity, but with a significantly reduced involvement with the coal sector.

Rockhampton Reconsiders

This situation continued for 30 years by which time the Rockhampton business community came to realise how many opportunities it was missing out on as a result of their lack of engagement with the coal sector.

In the mid-1990s the Federal Government funded Office of Labour Market Adjustment contracted Brisbane-based consultants Gibson Associates to come up with a strategic way forward to increase Rockhampton's contribution to the CQ coal mining supply chain. This resulted in John Spence-Thomas compiling the "Coal Mining Supply Strategy for Rockhampton" in 1996.

At the request of the Department of State Development, Gibson Associates evaluated the strategy and recommended various improvements in 2000.

Mining Growth Project

In 2004 Rockhampton Mayor Cr Margaret Strelow visited Mackay and witnessed firsthand the impact the coal boom was having on that City. This resulted in Council adopting a Mining Growth Project which had two immediate aims, the development of a 10 year strategic plan and publication of the “Coal Country Advertiser” to promote services available in Rockhampton.

Gracemere Industrial Area

In 2011 following submissions from Gracemere industrial businesses, Council and the Rockhampton business community the Queensland Government decided to construct a \$50 million vehicle overpass over the Blackwater Rail Line and the Capricorn Highway in the vicinity of Malchi, 5km west of Gracemere.

After the 2012 local government elections Council re-commenced its Mining Growth Project with a particular focus on developing the Gracemere Industrial Area as an industrial precinct between Gracemere and the Stanwell Power Station.

Council updated its town plan to permit land on the eastern side of the overpass to be used for medium and high intensity industrial purposes. Over the next four years it spent \$20 million providing road, water and sewerage services for the GIA.

This resulted in the GIA growing consistently in spite of the coal turndown which had its first impacts in 2012.

21st Century Service Provider

As a result of its central location to the Bowen, Galilee and Surat Basins, by 2010 Rockhampton had become the second largest provider of goods and services to the Bowen Basin coal mining operations, behind Mackay.

The Region has a diversified economy with important contributions from the following sectors other than mining:

- Agriculture
- Education & training
- Health & social assistance
- Manufacturing (beef abattoirs)
- Retail
- Defence
- Power generation
- Tourism & events
- Transport & logistics

The Queensland Government has a strong presence in the Rockhampton Region led by its involvement in education and health.

Coal Downturn Impact

The Bowen Basin coal downturn started to impact the Rockhampton Region by 2012.

Initially, the Region's diverse economy provided an effective buffer and impacts from the downturn, which had become very apparent in some of the nearby local authorities, were limited.

By 2014, the impacts of the coal downturn were starting to be more widely felt and that obviously began to include the Rockhampton Region.

Central Queensland media have run a succession of headlines and stories about job losses at Rockhampton resources service work sites such as Hastings Deering, QMAG and Aurizon.

The downturn in Rockhampton Region has been documented as impacting in the following areas:

- Population growth
- Gross regional product
- Number of new jobs
- Unemployment rates
- House values
- Unit values
- House rents
- Unit rents
- Number of empty houses

Nine diagrams, which highlight the impact of the coal downturn on the Rockhampton Region, are included as part of this submission.

Request to Productivity Commission

As a result of these impacts, Council requests the Productivity Commission to seek from the Federal and Queensland Governments actions that:

- a) Reduce the complexity and time of gaining mining project approvals, while preserving consideration of stakeholders' interests;
- b) Reduce the time of making government decisions regarding mining projects;
- c) Help diversify the mining industry supply chain;
- d) Upgrade the Capricorn Highway, especially west of Emerald, as one of the main access routes to the Bowen and Galilee Basins;
- e) Upgrade the Rockhampton-Biloela road system to improve access to the Callide/Dawson Valleys; and
- f) Upgrade the May Downs Road to improve access to areas in the centre of the Bowen Basin.

SUBMISSION TO TRANSITIONING REGIONAL ECONOMIES STUDY

Supporting tables and graphs

Meeting Date: 7 February 2017

Attachment No: 3

Estimated Resident Population (ERP)

Rockhampton			
Year (ending June 30)	Number	Change in number	Change in percent
2005	73,185		
2006	74,204	+1,019	+1.39
2007	75,195	+991	+1.34
2008	76,272	+1,077	+1.43
2009	77,448	+1,176	+1.54
2010	78,193	+745	+0.96
2011	78,939	+746	+0.95
2012	80,924	+1,985	+2.51
2013	82,456	+1,532	+1.89
2014	83,405	+949	+1.15
2015	83,653	+248	+0.30

Source: Australian Bureau of Statistics, Regional Population Growth, Australia (3218.0). Compiled and presented in profile.id by [.id](#), the population experts.



Comment: The population of the Rockhampton Region increased by 248 residents or 0.30 per cent in 2015. The increase in 2015 was noticeably lower than in the previous decade.

Rockhampton Regional Council area - Gross Regional Product measures

Year ending June	Headline GRP \$m	% change from previous year	Local industry GRP \$m	Local residents GRP \$m	Local industry to residents ratio
2,015	5,014	-2.5	3,556	3,656	0.97
2,014	5,140	+3.9	3,681	3,780	0.97
2,013	4,946	+2.8	3,753	3,827	0.98
2,012	4,813	+2.7	3,768	3,808	0.99
2,011	4,685	-0.2	3,623	3,618	1.00
2,010	4,696	-1.1	3,426	3,399	1.01
2,009	4,749	+3.3	3,486	3,451	1.01
2,008	4,599	+4.1	3,442	3,391	1.01
2,007	4,419	+7.6	3,198	3,111	1.03
2,006	4,107	+7.6	2,902	2,831	1.03
2,005	3,818	+7.6	2,633	2,560	1.03
2,004	3,548	+3.8	2,354	2,289	1.03
2,003	3,419	+0.7	2,145	2,079	1.03
2,002	3,396	+2.9	2,166	2,082	1.04
2,001	3,301		2,035	1,950	1.04

Source: [National Institute of Economic and Industry Research \(NIEIR\)](#) ©2016. Compiled and presented in economy.id by [.id](#), the population experts.

Data is based on 2013-14 constant prices for all years. NIEIR data are inflation adjusted each year to allow direct comparison, and new data releases normally adjust previous years' figures to a new base year.

Comment: Gross Regional Product of the Rockhampton Region fell by 2.5 per cent in 2015, after rising for the previous three years.

Local jobs

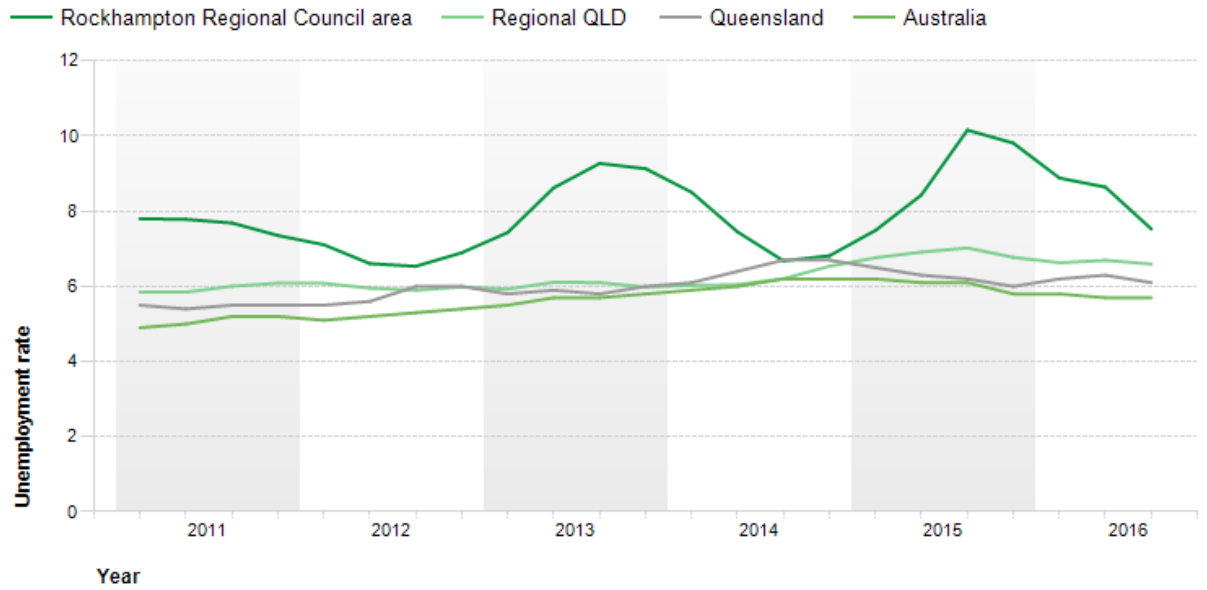


Source: National Institute of Economic and Industry Research (NIEIR) @2016
 Compiled and presented in economy.id by .id the population experts



Comment: The number of Rockhampton Regions residents who were employed increased by 1.29 per cent in 2015.

Quarterly unemployment rate

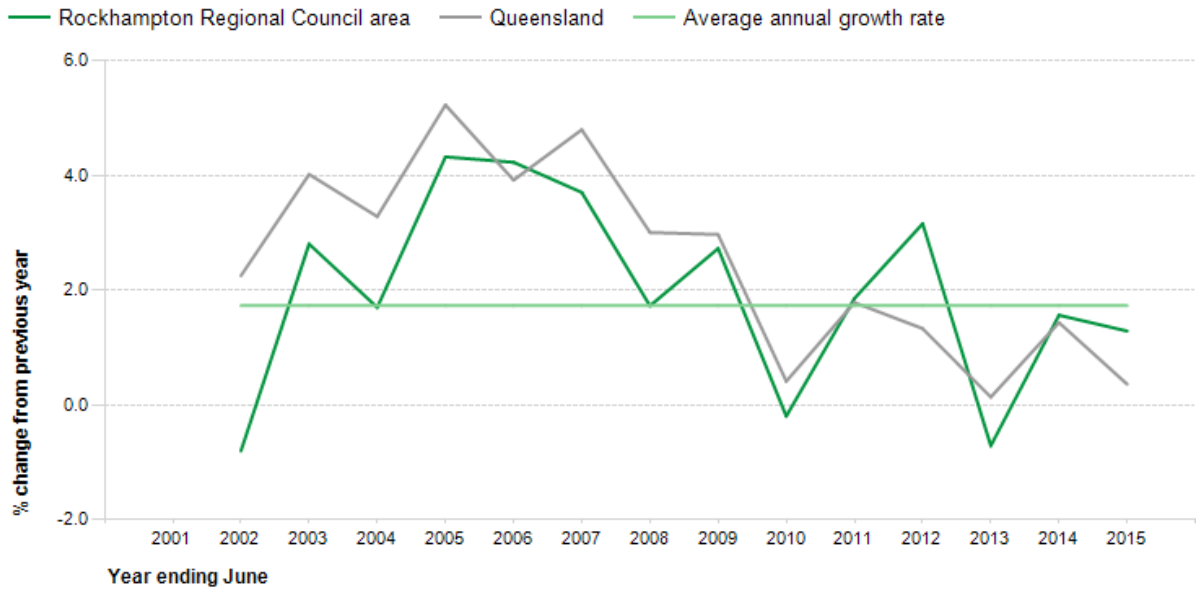


Source: Australian Bureau of Statistics, Labour force survey, catalogue number 6202.0, and Department of Employment, Small Area Labour Markets, March 2016. Compiled and presented in economy.id by .id the population experts.



Comment: Rockhampton Region’s unemployment rate is very lumpy rising to 10 per cent in 2015. It also peaked at over 9.5 per cent two years earlier.

Annual change in employed residents

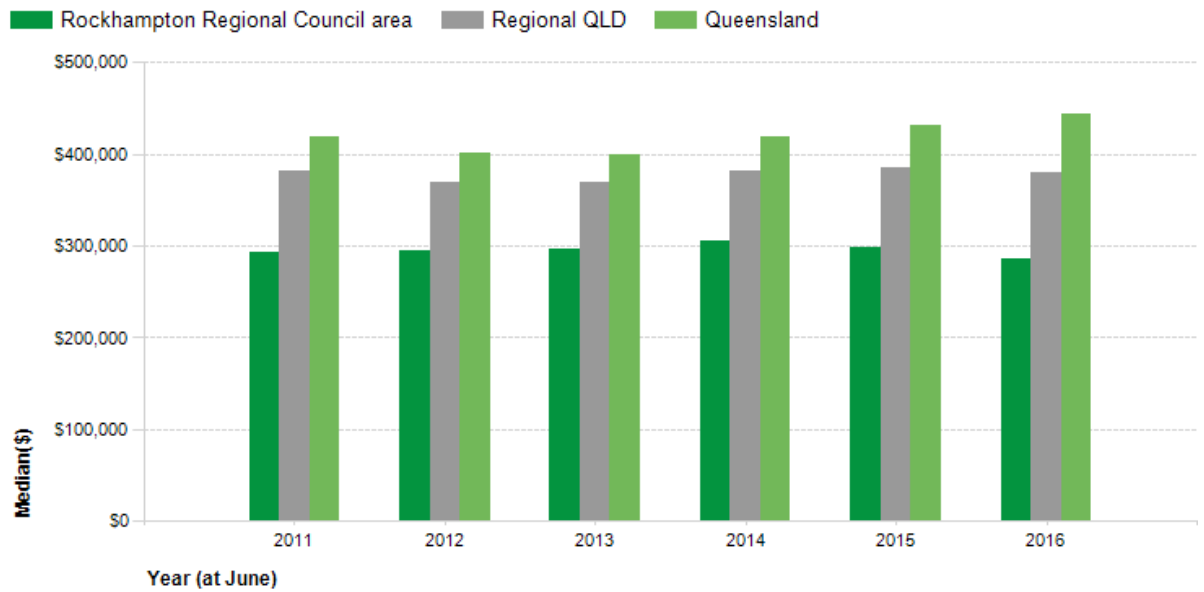


Source: National Institute of Economic and Industry Research (NIEIR) @2016
 Compiled and presented in economy.id by .id the population experts



Comment: In 2014 and 2015 the number of employed residents in the Rockhampton Region was below the annual growth rate.

Value of houses

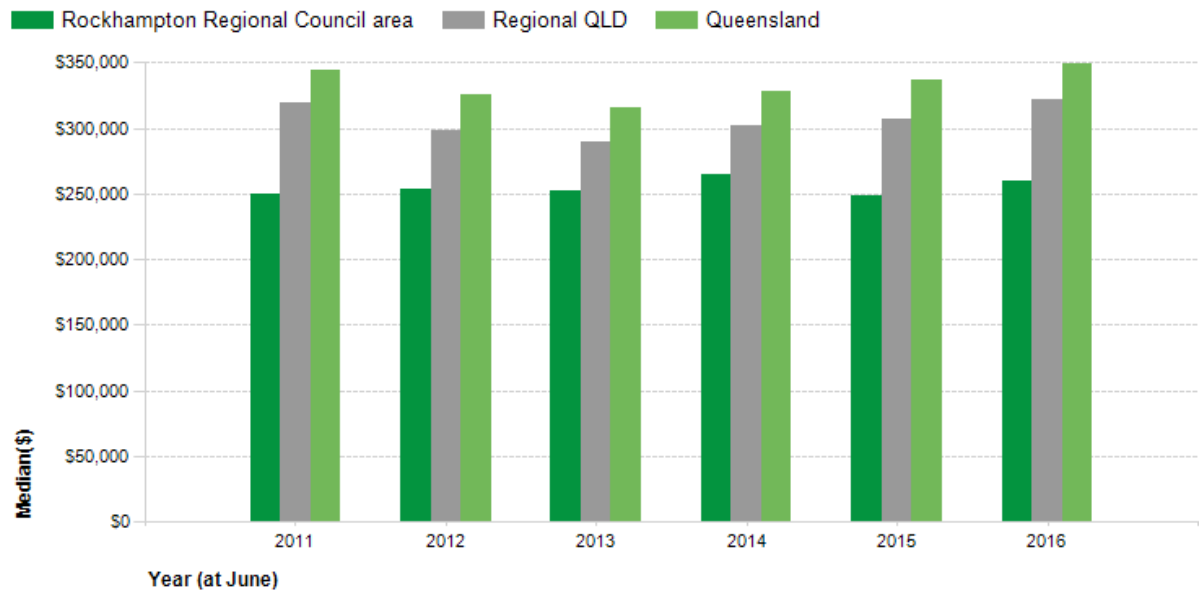


Source: Hometrack 2011-2016, Housing Valuation System



Comment: The value of housing in the Rockhampton Region has fallen each year since 2014.

Value of units

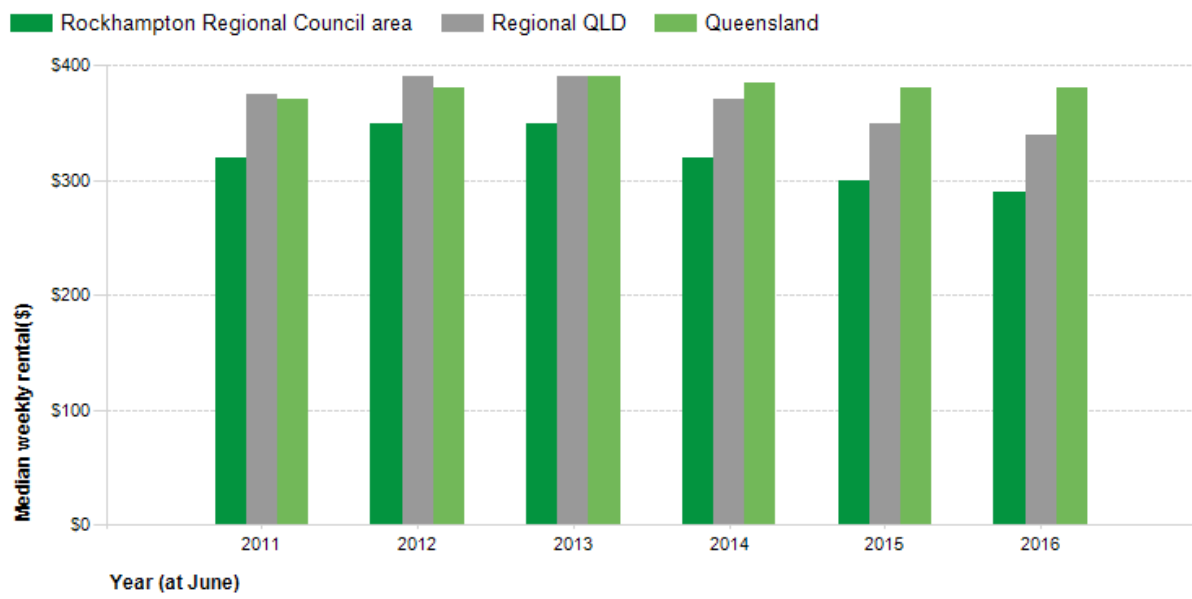


Source: Hometrack 2011-2016, Housing Valuation System



Comment: The value of units in the Rockhampton Region fell in 2015, and partially recovered in 2016

Rental of houses

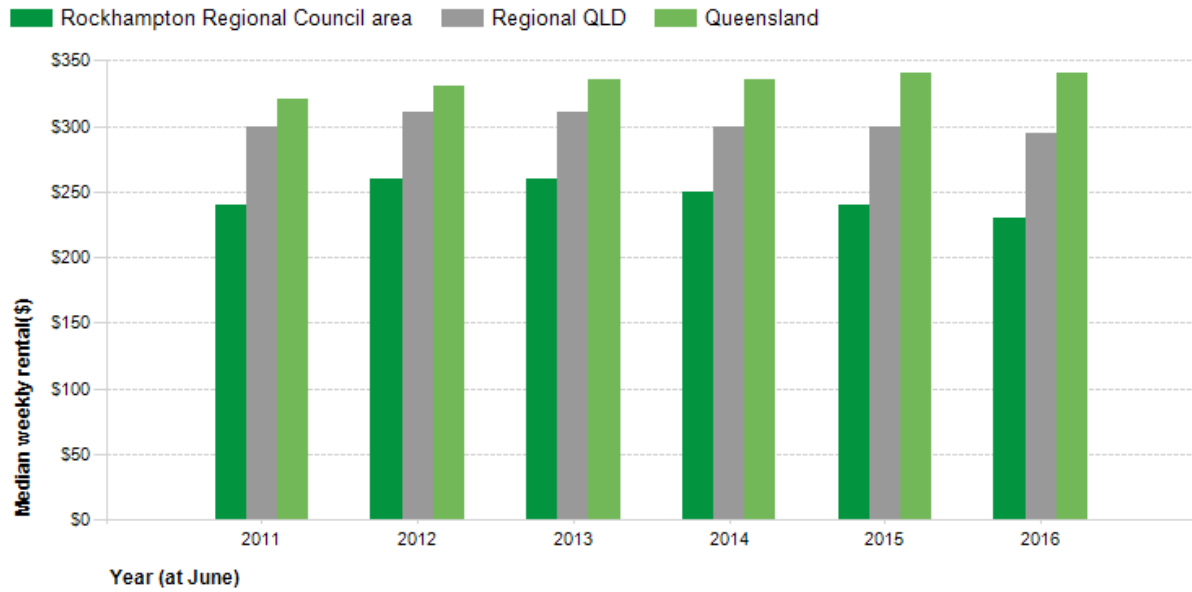


Source: Hometrack 2011-2016, Automated Valuation System



Comment: The amount of house rentals in the Rockhampton Region fell progressively from 2013 to 2016.

Rental of units



Source: Hometrack 2011-2016, Automated Valuation System



Comment: The amount of unit rentals in the Rockhampton Region also fell from 2013 to 2016.

**11.4 STATE GOVERNMENT WORKS FOR QUEENSLAND PROGRAM - REPORT
DETAILS OF THE FACILITY UPGRADES PROJECT**

File No: 4965
Attachments: 1. Works for Qld Lists - Facility Upgrades
Authorising Officer: Evan Pardon - Chief Executive Officer
Author: Ross Cheesman - Deputy Chief Executive Officer

SUMMARY

At its meeting on 24 January 2017 Council considered projects it would like to submit under the Queensland Government's Works for Queensland Program. While a number of projects were decided, it was resolved to bring back a report on the detail of the Facility Upgrades project.

OFFICER'S RECOMMENDATION

THAT the following projects make up the Facility Upgrades project to be submitted as part of the Queensland Governments Works for Queensland Program:

- Mt Archer Activation - \$461,250
- Rockhampton Zoo & Botanical Gardens - \$500,000
- Scotia Place Air Conditioning - \$250,000
- Muellerville Walk - \$94,500
- Rockhampton Showground Improvements - \$270,689

COMMENTARY

At its meeting on 24 January 2017 Council considered projects it would like to submit under the Queensland Government's Works for Queensland Program. While a number of projects were decided it was resolved that a *'further report be presented at the next Council meeting on the proposed Facility Upgrades and will include budget allocation for the Rockhampton Zoo and Mt Archer Projects'*.

The projects recommended for the Facility Upgrades include those stipulated being the Rockhampton Zoo (improvements within Botanic Gardens and Zoo focusing on improving disability access, improved pathway links, new shade structure/s and Zoo enclosure fencing) and Mt Archer (implementation of priority projects from the Mt Archer Activation Plan).

The other projects recommended were discussed by Councillors on the day though not formally adopted. Rockhampton Showground Improvements was not discussed however is recommended as the importance of this facility regarding major events. The attached list provides several projects at the Rockhampton Showgrounds that this amount can be made up to.

Consequently these projects recommended can be altered to suit Council. A complete list of projects that could be completed by the 30 November deadline is included for Council consideration. The Walter Reid lift replacement is the only one that poses some risk from a timing perspective.

CONCLUSION

It is recommended that the projects as suggested in the officer's recommendation be adopted.

**STATE GOVERNMENT WORKS FOR
QUEENSLAND PROGRAM –
REPORT DETAILS OF THE FACILITY
UPGRADES PROJECT**

Works for Qld Lists - Facility Upgrades

Meeting Date: 7 February 2017

Attachment No: 1

Project details		
Project title	Project description	W4Q project budget (GST Excl.)
Facility Projects		
Rockhampton Showground People's Bar	Defects, new covered veranda and equitable access	\$ 200,000
Rockhampton Showground Toilet Block - near Kennel Clut	New toilet block to service demand	\$ 200,000
Rockhampton Showground Walter Pierce Pavilion	Installation of cooling fans	\$ 28,000
Rockhampton Showground Robert Schwarten Pavillion	Seamless flooring to hall area, rectifying other defects	\$ 225,000
Rockhampton Showground Agricultural Pavillion and Kele Pavilior	Drainage issues	\$ 25,000
Rockhampton Showground Agricultural Hall	Defects from condition assessment	\$ 53,000
Rockhampton Showground Exhibition Pavilion	Roof and paint	\$ 45,900
	Defects from condition assessment	\$ 35,000
Rockhampton Showground Horticultural Pavilion	Repair structural defects	\$ 36,000
Rockhampton Showground McCamley Hal	Repair structural defects	\$ 30,000
Rockhampton Showground Poultry Pavilion / Kele Pavilion	Defects from condition assessment	\$ 30,000
Rockhampton Showground Kennel display area	Demolish existing and replace	\$ 45,000
Mt Morgan School of Arts	Replacement of roofing	\$ 150,000
	Fans, lighting	\$ 23,000
Mt Morgan Youth Centre	Address defects and compliance issues	\$ 30,000
Mt Morgan Showground	Electrical upgrade to service events	\$ 76,000
Mt Morgan Squash Courts	Defects from condition assessment	\$ 17,000
Mt Morgan Pool grandstanc	Repair structural defects	\$ 55,000
Mt Morgan Pool changerooms	Public safety and privacy issues	\$ 15,000
Mt Morgan Welfare House	External repaint	\$ 153,000
Woodworker's Guild	Repair structural defects	\$ 53,000
Schotha Place	Air Conditioning	\$ 250,000
Walter Reid Cultural Centre lift	Replacement of current lift	\$ 300,000
Walter Reid Cultural Centre	Carpet replacement in common areas	\$ 50,000
Child Care Centre	Painting	\$ 10,000
Japanese Gardens shade shelter	Repair structural defects	\$ 42,000
Pilbeam Theatre	Renewal of backstage facilities	\$ 65,000
Pathway between Theatre and Gallery	Address compliance and safety issues	\$ 53,600
North Rockhampton Library	Upgrade entrance to address compliance issues	\$ 80,000
	Solar	\$ 100,000
	Repainting of exterior, roof over AC plant	\$ 73,000
	Replace remainder of carpet	\$ 42,000
	Entrance wall safety issues	\$ 15,000
Rockhampton Regional Library	Internal repaint of high profile building	\$ 50,000
	Internal sliding door	\$ 20,000
Mt Morgan Library	Replacement of roofing	\$ 50,000
Elfin House	Repair structural defects	\$ 75,000
Saleyards Park amenities Multi sport facility	Repair structural defects	\$ 20,000
BMX Club toilets	Replace existing	\$ 200,000
72A Glenmore Road - St John's Ambulance	Defects from condition assessment	\$ 50,000
Square Dance Hall, Kingel Park	Defects from condition assessment	\$ 80,000
Athelstane Bowls Club	Defects from condition assessment	\$ 52,000
Park Avenue CWA Hall	Defects from condition assessment	\$ 47,000
Queens Park toilet block	Repainting	\$ 38,000
		\$ 3,287,500

12 NOTICES OF MOTION

Nil

13 QUESTIONS ON NOTICE

Nil

14 URGENT BUSINESS/QUESTIONS

Urgent Business is a provision in the Agenda for members to raise questions or matters of a genuinely urgent or emergent nature, that are not a change to Council Policy and can not be delayed until the next scheduled Council or Committee Meeting.

15 CLOSED SESSION

In accordance with the provisions of section 275 of the *Local Government Regulation 2012*, a local government may resolve to close a meeting to the public to discuss confidential items, such that its Councillors or members consider it necessary to close the meeting.

RECOMMENDATION

THAT the meeting be closed to the public to discuss the following items, which are considered confidential in accordance with section 275 of the *Local Government Regulation 2012*, for the reasons indicated.

16.1 Request for Private Function (Wedding Reception) on Quay Street

This report is considered confidential in accordance with section 275(1)(h), of the *Local Government Regulation 2012*, as it contains information relating to other business for which a public discussion would be likely to prejudice the interests of the local government or someone else, or enable a person to gain a financial advantage.

16.2 Monthly Report from Chief Executive Officer for period ending Monday 30 January 2017

This report is considered confidential in accordance with section 275(1)(h), of the *Local Government Regulation 2012*, as it contains information relating to other business for which a public discussion would be likely to prejudice the interests of the local government or someone else, or enable a person to gain a financial advantage.

16 CONFIDENTIAL REPORTS

16.1 REQUEST FOR PRIVATE FUNCTION (WEDDING RECEPTION) ON QUAY STREET

File No: 1392

Attachments:

1. Letter of Request
2. Neighbours Support
3. Photos

Authorising Officer: Evan Pardon - Chief Executive Officer

Author: Ross Cheesman - Deputy Chief Executive Officer

This report is considered confidential in accordance with section 275(1)(h), of the *Local Government Regulation 2012*, as it contains information relating to other business for which a public discussion would be likely to prejudice the interests of the local government or someone else, or enable a person to gain a financial advantage.

SUMMARY

A request has been made to conduct a private function (wedding reception) on Quay Street between Denham and Fitzroy Streets by a property owner in that precinct. The event is in September and will require the temporary closure of that section of Quay Street. This report seeks Council consideration for the applicants to proceed with a formal application.

16.2 MONTHLY REPORT FROM CHIEF EXECUTIVE OFFICER FOR PERIOD ENDING MONDAY 30 JANUARY 2017**File No:** 1830**Attachments:** 1. Monthly Report January 2017**Authorising Officer:** Evan Pardon - Chief Executive Officer**Author:** Evan Pardon - Chief Executive Officer

This report is considered confidential in accordance with section 275(1)(h), of the *Local Government Regulation 2012*, as it contains information relating to other business for which a public discussion would be likely to prejudice the interests of the local government or someone else, or enable a person to gain a financial advantage.

SUMMARY

Chief Executive Officer presenting monthly report for the period ending Monday 30 January 2017.

17 CLOSURE OF MEETING